

Impaired fasting blood glucose is associated to cognitive impairment and cerebral atrophy in middle-aged non-human primates

Fathia Djelti^{1,2}, Marc Dhenain^{3,4}, Jérémy Terrien¹, Jean-Luc Picq⁵, Isabelle Hardy¹, Delphine Champeval¹, Martine Perret¹, Esther Schenker⁶, Jacques Epelbaum^{1,2,7}, Fabienne Aujard¹

¹MECADEV UMR 7179, Centre National de la Recherche Scientifique, Muséum National d'Histoire Naturelle, 91800 Brunoy, France

²Université Sorbonne Paris Cité, 75013 Paris, France

³Centre National de la Recherche Scientifique, Université Paris Sud, Université Paris Saclay, UMR 9199, Neurodegenerative Diseases Laboratory, 92265 Fontenay-aux-Roses, France

⁴Commissariat à l'Énergie Atomique et aux Énergies Alternatives (CEA), Direction de la Recherche Fondamentale (DRF), Institut d'Imagerie Biomédicale (I2BM), MIRCen, 92265 Fontenay-aux-Roses, France

⁵Laboratoire de Psychopathologie et de Neuropsychologie, EA 2027, Université Paris 8, 93200 Saint-Denis, France

⁶Institut de Recherches Servier, 78290 Croissy-sur-Seine, France

⁷Centre Psychiatrie & Neurosciences, UMR S894 INSERM, Université Paris Descartes, 75014 Paris, France

Correspondence to: Fabienne Aujard; **email:** fabienne.aujard@mnhn.fr

Keywords: blood glucose, middle age, spatial memory performance, hippocampal/septal atrophy, spontaneous models, *Microcebus murinus*

Received: September 27, 2016

Accepted: December 20, 2016

Published: December 28, 2016

ABSTRACT

Age-associated cognitive impairment is a major health and social issue because of increasing aged population. Cognitive decline is not homogeneous in humans and the determinants leading to differences between subjects are not fully understood. In middle-aged healthy humans, fasting blood glucose levels in the upper normal range are associated with memory impairment and cerebral atrophy. Due to a close evolutionary similarity to Man, non-human primates may be useful to investigate the relationships between glucose homeostasis, cognitive deficits and structural brain alterations. In the grey mouse lemur, *Microcebus murinus*, spatial memory deficits have been associated with age and cerebral atrophy but the origin of these alterations have not been clearly identified. Herein, we showed that, on 28 female grey mouse lemurs (age range 2.4-6.1 years-old), age correlated with impaired fasting blood glucose ($r_s=0.37$) but not with impaired glucose tolerance or insulin resistance. In middle-aged animals (4.1-6.1 years-old), fasting blood glucose was inversely and closely linked with spatial memory performance ($r_s=0.56$) and hippocampus ($r_s=-0.62$) or septum ($r_s=-0.55$) volumes. These findings corroborate observations in humans and further support the grey mouse lemur as a natural model to unravel mechanisms which link impaired glucose homeostasis, brain atrophy and cognitive processes.

INTRODUCTION

With the progressive aging of the World population, an increasing number of people suffer from cognitive impairment and dementia. These deficits affect quality of life and cause social, economic and public health problems [1-3]. A clear relationship has been established between age-associated cognitive decline and selective regional brain atrophy from normal aging to dementia [4-5].

Cognitive decline is not homogeneous in humans and the determinants leading to differences between subjects are not fully understood. Middle-aged metabolic disorders [6-8] culminating in type 2 diabetes (T2D) [9-11] could be a risk factor to memory impairment and cerebral atrophy. T2D is characterized by hyperglycaemia ($> 7\text{mmol/L}$), impairment of glucose tolerance leading to insulin resistance [12]. Patients with type 2 diabetes display memory impairment [9-11] and anatomic brain alterations including hippocampus

and amygdala atrophy [13]. A phylogenetic study of the longevity of 16 rodent species even concluded that modulation of IGF1R signaling in nervous tissue, but not in the peripheral tissues, is an important factor in the evolution of longevity in mammals [14].

Intermediate states between normal glucose homeostasis and diabetic hyperglycaemia are currently described in aging. They are characterized either by impaired fasting glycaemia (IFG) or by impaired glucose tolerance (IGT) [15]. IFG occurs when fasting blood glucose level is consistently elevated above what is considered normal levels. IGT evaluates how quickly glucose is cleared from the blood by testing glycaemia during two-hours after ingestion of a standard dose of glucose. These two states are associated with an increased risk for various pathologies including cardiovascular pathologies. Non diabetic subjects with IFG display mild cognitive impairment and regional brain atrophy [16-20]. In laboratory rodents, in which diabetic stages are induced by chemicals or diet, experimental studies also demonstrate a relationship between glucose dysregulation and memory performance [21-22]. However, these models are far from recapitulating the same pathophysiology as observed in Man [23-24].

In contrast to rodent models, the grey mouse lemur (*Microcebus murinus*), a non human primate, could represent an interesting alternative to study the relationships between preclinical glucose dys-homeostasis, cerebral atrophy and cognitive impairment. Firstly, this small animal (12cm, 60-100g) has a relatively short maximum lifespan (approximately 12 years in captivity) in comparison to other primates, which have a much longer lifespan [25]. Secondly, as a primate, it shares several genetic, physiological and anatomical similarities with Man [25-26]. Thirdly, a large inter-individual heterogeneity of spatial memory performance is observed in aging grey mouse lemurs [27]. Fourthly, atrophy of distinct brain regions (cortical regions, hippocampus, caudate nucleus), including atrophy of some hippocampal subfields is observed in aged mouse lemurs [28]. Finally, in old animals, cognitive defects correlate with hippocampus and septum atrophy [29] but the origin of these alterations is still partly unknown.

In the present study, blood glucose measures were determined in young and middle-aged mouse lemurs. A correlation between fasting blood glucose and age was evidenced. A majority (56%) of middle-aged animals displayed high normal value of fasting blood glucose levels whereas the remaining ones (44%) presented a range of values equivalent to young animals. Impaired fasting blood glucose was associated with memory alterations and hippocampus/septum atrophy. These results emphasize the critical impact of early glucose dys-

homeostasis on morphological brain alterations and on cognitive function.

RESULTS

Glucose metabolic measures in mouse lemurs

Indicators of glucose metabolism were evaluated in female mouse lemurs aged from 2.4 to 6.1 years old (n=28). A correlation occurred between age and fasting blood glucose ($r_s=0.37$, $p=0.045$, Figure 1A) but fasting blood insulin levels and HOMA-IR index (an index of insulin resistance) were not significantly correlated with age (fasting insulin, $r_s=0.03$, $p=0.84$; HOMA-IR: $r_s=0.22$, $p=0.28$; Figure 1B, Table 1). Oral glucose tolerance was similar between animals, independently of age (Figure 1C) and so the glucose tolerance index was not linked to age ($r_s=-0.18$, $p=0.38$; Figure 1D, Table 1).

Animals were then dissociated into young (range: 2.4 to 3.5 years old, n=12) and middle-aged (range 4.1 to 6.1 years old, n=16) lemurs (Table 2). Body mass was not significantly different between the two groups (Table 2). Mean fasting blood glucose in young animals was 3.2 ± 0.1 mmol/L (Table 2). Middle-aged animals presented significantly greater fasting blood glucose levels (4.0 ± 0.3 mmol/L, $p=0.03$) associated with a higher inter-individual variability (range: 2.7-6.6 mmol/L, Table 2). Interestingly, two groups of middle-aged animals could be differentiated based on their fasting blood glucose. Indeed, 56% of middle-aged animals displayed a higher fasting glycaemia than any young animal (i.e. > 4 mmol/L) (Figure 1A).

Spatial memory performance in mouse lemurs

A Barnes maze task was used to evaluate spatial memory performances in mouse lemurs [27]. Number of errors correlated with age ($r_s=0.49$, $p=0.008$; Figure 2, Table 1). Young animals displayed on average 3.1 ± 0.3 errors during the test (Table 2) whereas the mean number of errors in middle-aged animals was 5.1 ± 0.7 (Table 2). High inter-individual heterogeneity in middle-aged animals (range: 2-11 errors) suggested a discrimination in two groups. Forty four per cent of middle-aged animals presented a similar number of errors as compared with young animals whereas 56% displayed an increased number of errors (Figure 2). A threshold of 5 errors discriminated the two subpopulations of good and poor performers.

Relationships between impaired fasting blood glucose and memory performance

The number of errors and fasting glucose levels were significantly correlated in the whole population

($r_s=0.38$, $p=0.045$, Figure 3A) and further so in middle-aged animals ($r_s=0.56$, $p=0.02$, Figure 3B) but the correlation did not reach significance in young mouse lemurs ($r_s=-0.36$, $p=0.25$, Table 1). The number of errors was not correlated with fasting insulin ($r_s=-0.11$, $p=0.61$, Table 1), HOMA-IR index ($r_s=-0.09$, $p=0.66$, Table 1) or the response to an oral glucose challenge ($r_s=-0.13$, $p=0.5$, Table 1).

The correlation between the number of errors and fasting glucose levels also revealed two subpopulations in middle-aged animals: 44% with normal fasting glycaemia and memory performance similar to young mouse lemur and 56% with impaired fasting glycaemia and memory impairment. These two groups were further identified in a principal component analysis (PCA). The variables discriminating the two subgroups of middle-aged animals were fasting blood glucose ($r=0.82$, $p=1.24 \times 10^{-7}$) and number of errors ($r=0.76$, $p=3 \times 10^{-6}$) (Supplementary Figure 1).

Relationships between impaired fasting blood glucose, hippocampus/septum atrophy, and memory performance in middle-aged mouse lemurs

Volumes of hippocampus, septum and caudate nucleus were determined in middle-aged mouse lemurs (Figure 4). No significant correlation occurred between regional brain volumes and age or body mass (Table 3).

A significant negative correlation was observed between the number of errors and the volume of hippocampus ($r_s=-0.51$, $p=0.045$ Figure 4C) or septum ($r_s=-0.56$, $p=0.02$ Figure 4G, Table 3), but not with the volume of the caudate nucleus ($r_s=0.08$, $p=0.71$, Table 3).

Multiple regression tests also highlighted that fasting blood glucose negatively correlated respectively with hippocampus ($r_s=-0.63$, $p=0.0099$; Figure 4D) and septum ($r_s=-0.55$, $p=0.027$; Figure 4H) volumes but not

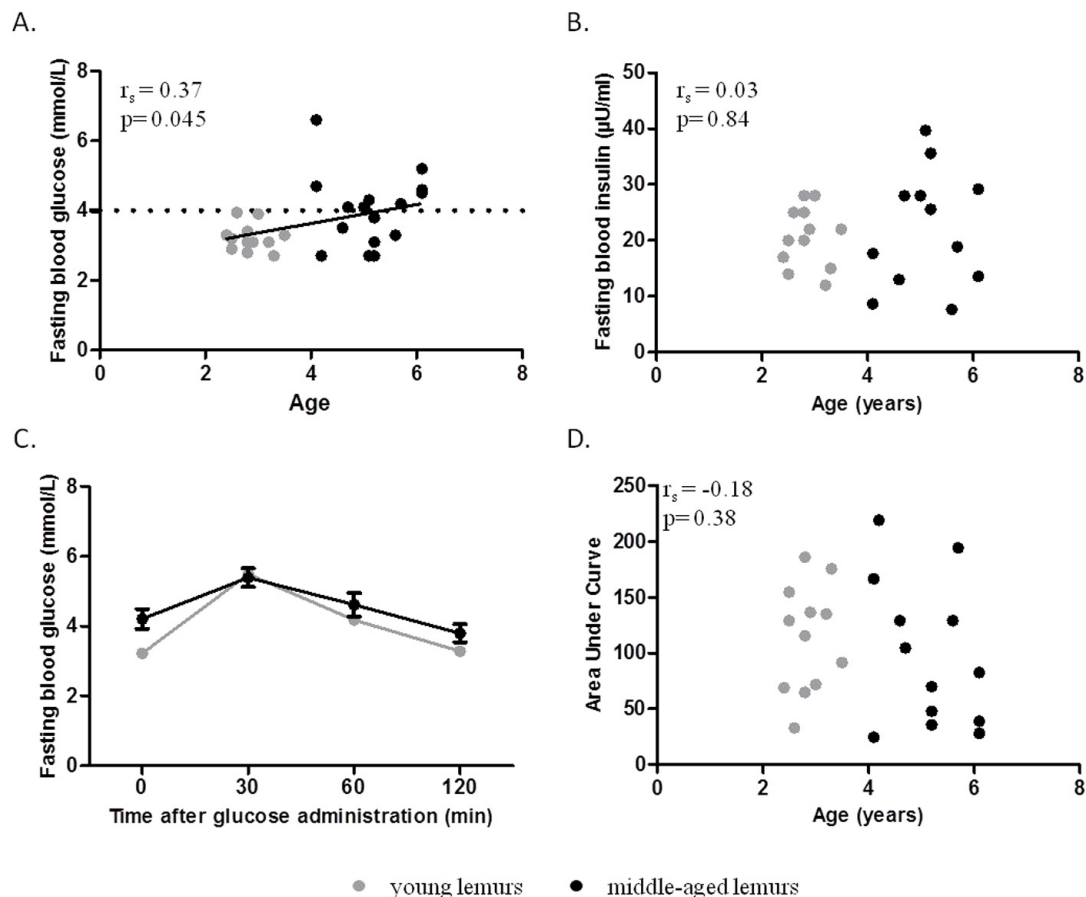


Figure 1. Relationship between glucose homeostasis parameters and age. Glucose metabolism parameters were evaluated in young (grey symbols, range: 2.4 to 3.5 years old) and middle-aged (black symbols, range: 4.1 to 6.1 years old) mouse lemurs. (A) Spearman correlation of fasting blood glucose levels and age. (B) Spearman correlation of fasting blood insulin levels and age. (C) Oral glucose tolerance test (OGTT): Blood glucose was measured 0, 30, 60 and 120 min after oral administration of 1.75g glucose/g of body mass (Two-way ANOVA: age $p < 0.01$, time $p < 0.001$, time \times age $p = 0.11$). (D) Spearman correlation of area under curve of OGTT and age.

with the volume of the caudate nucleus ($r_s=0.16$, $p=0.52$, Table 3). Hippocampus, septum or caudate nucleus volume did not correlate with fasting insulinemia, HOMA-IR index or glucose tolerance index (Table 3).

Principal component analysis with fasting blood glucose as qualitative variable was performed in the middle-aged group, on age, body mass, insulin, glucose tolerance test, memory performance (number of errors) and regional brain volumes. Individual dispersion re-

Table 1. Spearman correlation rank coefficients between physical, glucose homeostasis parameters and number of errors in the Barnes maze.

		Age	Body mass	Fasting blood glucose	Fasting insulin	HOMA-IR	Glucose tolerance index
Body mass	All	0.22					
	Young	0.11					
	Middle-aged	-0.15					
Fasting glucose	All	0.37*	0.08				
	Young	-0.15	0.37				
	Middle-aged	0.09	-0.12				
Fasting insulin	All	0.03	-0.09	0.02			
	Young	0.07	0.47	0.37			
	Middle-aged	0.09	-0.44	-0.11			
HOMA-IR	All	0.22	0.03				
	Young	0.08	0.50				
	Middle-aged	-0.06	-0.44				
Glucose tolerance index	All	-0.18	-0.20		-0.18	-0.21	
	Young	0.22	-0.25		-0.29	-0.44	
	Middle-aged	-0.24	-0.11		-0.05	0.09	
Number of errors	All	0.49**	-0.10	0.38*	-0.11	-0.09	-0.13
	Young	0.28	-0.24	-0.36	0.25	0.05	0.31
	Middle-aged	0.36	-0.17	0.56*	-0.23	-0.06	-0.31

* $p<0.05$, ** $p<0.001$. HOMA-IR: Homeostasis model assessment of insulin resistance.

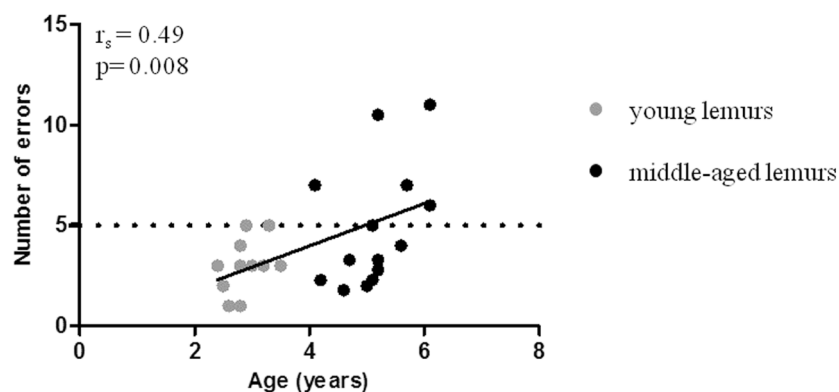


Figure 2. Relationship between spatial memory performance and age. Spatial memory performance as reflected by the number of errors was determined with Barnes maze test and was measured in young (grey symbols, range: 2.4 to 3.5 years old) and middle-aged (black symbols, range: 4.1 to 6.1 years old) mouse lemurs. Spearman correlation of error number and age. The horizontal dotted line illustrates the threshold differentiating good and poor performers.

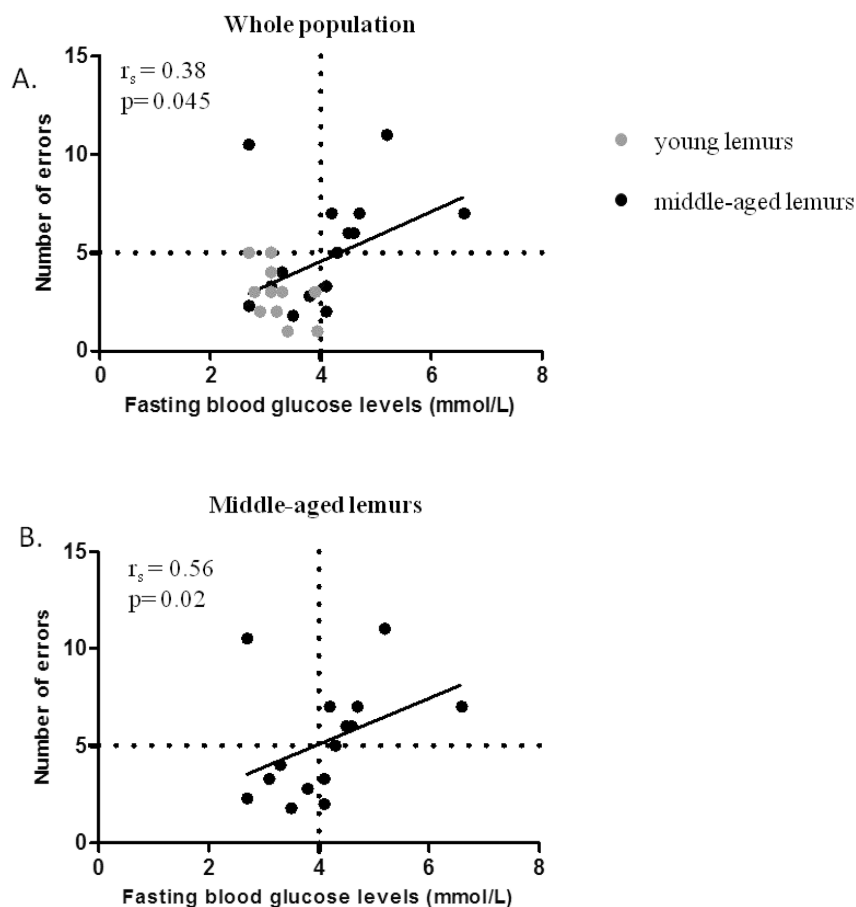
presented two groups with principal component 1 (PC1: 34.3%) and principal component 2 (PC2: 17.8%) (Figure 5). The threshold of 4 mmol/L discriminated

normal and high glucose levels (Figure 5). Variables discriminating the two groups were regional brain volume: hippocampal volume ($r = 0.81$, $p = 0.0001$),

Table 2. Characteristics of mouse lemurs.

	Young	Middle-aged	p
Number	12	16	
Age (years)	2.9 ± 0.1 (2.4 to 3.5)	5.1 ± 0.2 (4.1 to 6.1)	<0.0001
Body mass (g)	82 ± 4 (65 to 108)	90 ± 4 (68 to 110)	0.16
Glucose homeostasis			
Fasting blood glucose (mmol/L)	3.2 ± 0.1 (2.7 to 3.9)	4.0 ± 0.3 (2.7 to 6.6)	0.03
Fasting Insulin (μU/ml)	21 ± 2 (12 to 28)	22 ± 3 (8 to 40)	0.98
HOMA-IR index	3.0 ± 0.3 (1.6 to 4.8)	3.9 ± 0.5 (1.1 to 7.6)	0.17
Glucose tolerance index (AUC in mmol/L.min)	114 ± 14 (33 to 186)	98 ± 18 (25 to 219)	0.4
Spatial memory performance			
Number of errors	3.1 ± 0.3 (1 to 5)	5.1 ± 0.7 (2 to 11)	0.08

Data are Mean ± SEM (Range): HOMA-IR: Homeostasis model assessment of insulin resistance. AUC: Area Under Curve of Oral Glucose Tolerance Test.



septum volume ($r=0.80$, $p=0.0001$) and number of errors ($r=-0.66$, $p=0.005$). Similarly, principal component analysis with memory performance as qualitative variable was performed, in the middle-aged group, on age, body mass, glucose parameters and brain region volume. Individual dispersion represented two groups with principal component 1 (PC1: 32.7%) and

principal component 2 (PC2: 18.5%) (Supplementary Figure 2). A threshold of 5 errors was used to qualify good and poor performers. Variables discriminating the two groups were brain region volume: hippocampal volume ($r=0.86$, $p=0.02e-5$), septum volume ($r=0.83$, $p=7.03e-5$) and fasting glucose levels ($r=-0.51$, $p=0.0045$).

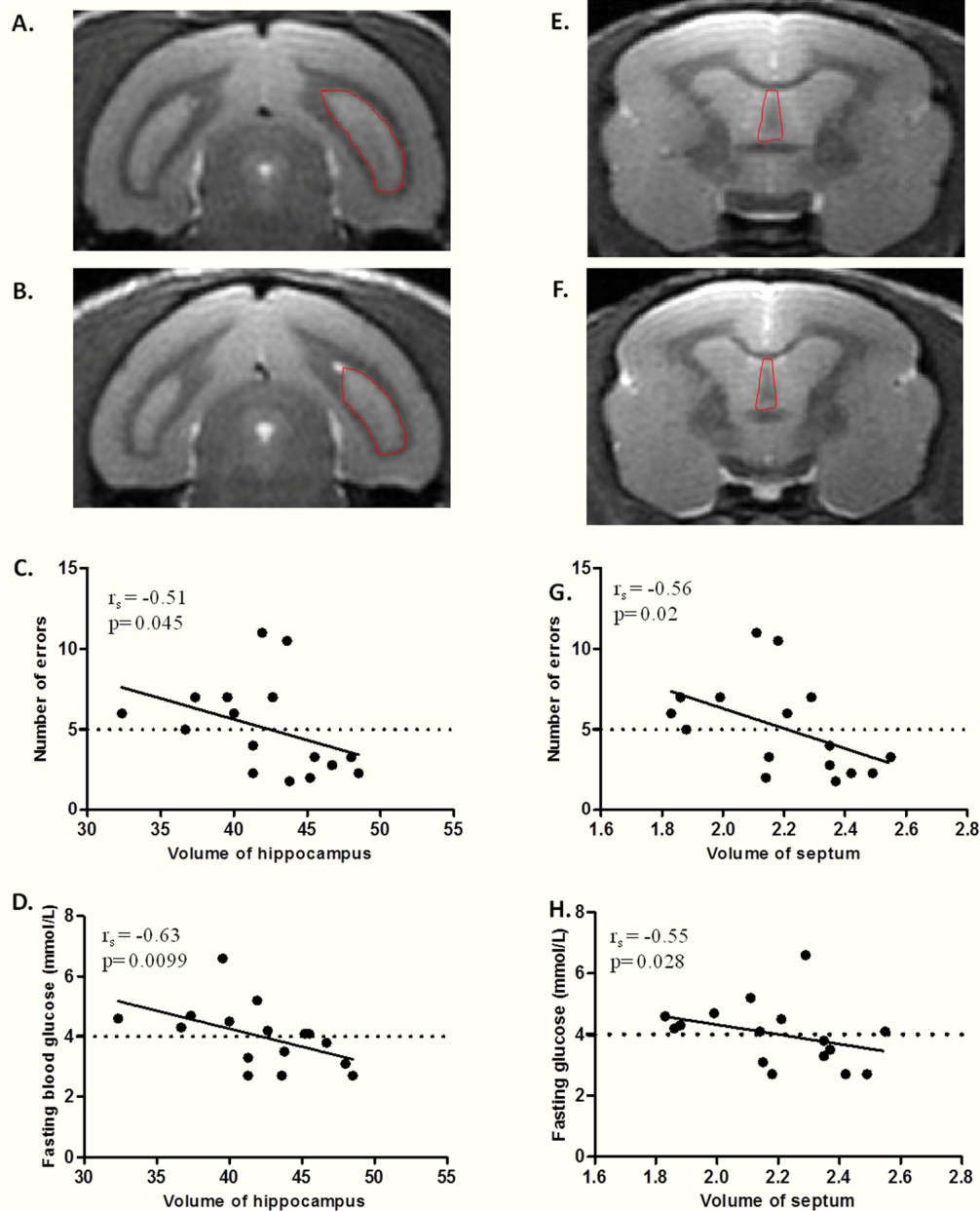
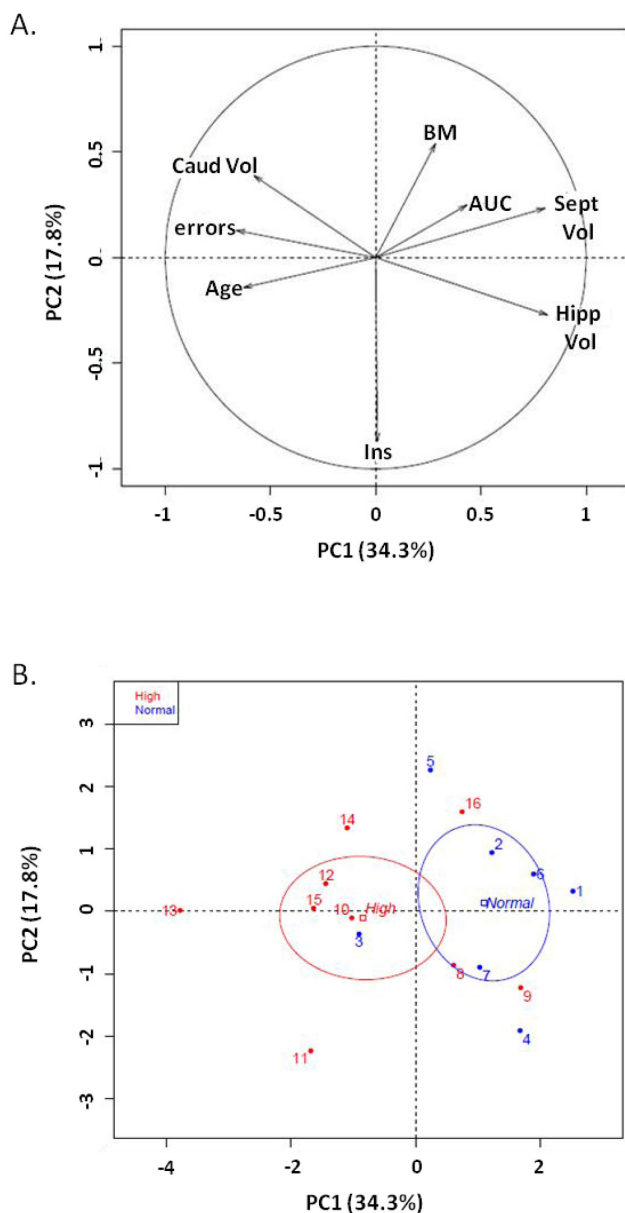


Figure 4. Relationship between fasting blood glucose, hippocampus/septum volume, and spatial memory performance in middle-aged lemurs. (A-B) MRI coronal sections of hippocampus (right hippocampus outlined by dotted line) in a non atrophied middle-aged (A) and an atrophied middle-aged (B) mouse lemurs. (C) Spearman correlation between number of errors and hippocampus volume. (D) Spearman correlation between fasting blood glucose and hippocampus volume. (E-F) MRI coronal sections of septum (outlined by dotted line) in a non atrophied middle-aged (E) and an atrophied middle-aged (F) animals. (G) Spearman correlation between number of errors and septum volume. (H) Spearman correlation between fasting blood glucose and septum volume.

Table 3. Spearman correlation rank coefficients between regional brain volume and physical, memory and glucose homeostasis parameters in middle-aged animals.

Region		Hippocampus	Septum	Caudate
Physical conditions	Age	-0.17	-0.40	0.12
	Body mass	-0.08	0.19	0.01
Memory performance	Number of errors.	-0.51*	-0.56*	0.08
Glucose homeostasis	Fasting blood glucose	-0.63**	-0.55*	0.16
	Fasting Insulin	0.14	-0.31	-0.02
	HOMA-IR	-0.15	-0.29	0.1
	Glucose tolerance index	0.27	0.46	0.14

* $p < 0.05$ and ** $p < 0.001$. HOMA-IR: Homeostasis model assessment of insulin resistance.



DISCUSSION

Impairment of fasting blood glucose (IFG) is a prediabetic stage that reflects early alteration of glucose metabolism and that may have consequences on health and mortality. Here, we described a clear relationship between fasting blood glucose levels and age in mouse lemur primates but highlighted an heterogeneity in middle-aged animals. Forty four percent of middle-aged animals displayed the same fasting blood glucose levels as young mouse lemurs whereas a majority (56%) presented high normal fasting blood glucose levels, *i.e.* an IFG condition. No significant difference in body weight, insulin resistance (HOMA-IR index) or glucose tolerance was observed between young and middle-aged animals, confirming the prediabetic stage.

Fasting blood glucose was positively correlated to spatial memory impairment in middle-aged animals and with an atrophy of the hippocampus and septum, regions that are well correlated with memory performance. As humans, mouse lemurs display age-related cerebral atrophy and evaluation of regional brain volume was previously compared in young (1.9 to 2.8 years old) and in aged (6.2 to 11.8 years old) mouse lemurs [29-30]. Caudate nucleus atrophy was clearly observed in the oldest animals whereas shrinkage of

Figure 5. Principal Component Analysis on middle-aged animals. (A) Variable factor map. Fasting blood glucose was considered as the qualitative variable on age, body mass (BM), number of errors (errors), volumes of hippocampus (Hipp Vol), septum (Sept Vol) and caudate nucleus (Caud Vol), insulin (Ins) and glucose tolerance index (OGTT-AUC) **(B)** Individual dispersion of PCA: x-axis: principal component 1 (PC1: 34.3%), y axis: principal component 2 (PC2: 17.8%). A threshold of 4 mmol/L defined normal blood glucose (fasting glucose less than 4 mmol/L, blue) and high blood glucose (fasting glucose more than 4 mmol/L, red).

hippocampus and septum regions was only present in a subgroup of older animals. Herein, we performed MRI analysis in middle-aged animals. The range of caudate nucleus volumes in middle-aged animals was similar to those measured in the young ones [29] suggesting that caudate atrophy is only occurring at very old ages. Heterogeneity of hippocampus and septum volumes was already observed in middle-aged animals. Some animals had a volume similar to young animals whereas others had a volume comparable to old animals [29]. Thus, hippocampus/septum atrophy begins in middle-age while caudate nucleus volume is later affected. Hippocampus and septum are two regions involved in spatial memory abilities [31-32] and a negative correlation was evidenced between hippocampus/septum volume and memory performance in old animals [29]. Here we confirmed this relationship in middle-aged animals.

The origin of cerebral atrophy in lemurs has been explored in previous studies and a relationship between atrophy and intracellular amyloid deposition has been suggested [33], but this study was based on few animals. In humans, IFG is related to poor cognitive performance and to atrophy of hippocampus [16-17, 19, 34]. We thus assessed whether these parameters could be linked to atrophy in lemurs and found that it is probably the main factor leading to pathologic hippocampal/ septal atrophy and the associated cognitive alterations in lemurs. Yet, reverse cause-effect relations are also possible [35].

IFG is a largely developed condition in middle-age healthy human [16-17, 19, 34]. It is related to poor cognitive performance and to atrophy of hippocampus [16-17, 19, 34], and concomitant to neuroinflammatory changes dependent on brain stress and NF-Kb [36]. It is thus critical to further evaluate this condition. Here, we showed that mouse lemurs are critical models to further evaluate this condition, to decipher mechanisms that may link fasting blood glucose levels, cerebral atrophy and cognition and to test therapies.

METHODS

Animals

Twenty eight female grey mouse lemurs (*Microcebus murinus*), used in this study were born and reared in the Brunoy colony (MNHN, France, license approval N° E91-114-1). The age of mouse lemurs used in the experiments ranged between 2.4 and 6.1 years old (Table 1). During this study, mouse lemurs were housed in cages in pairs. The cages (50 x 49 x 50 cm) were equipped with wooden branches and wooden nests (nestbox) and kept at standard temperature (24–26 °C)

and relative humidity (55 %). In the colony, animals were kept in alternating 6-month period of long days (14:10 light/dark, summer-like photoperiod) and short days (10:14 light/dark, winter-like photoperiod). Light was provided by cool fluorescent lamps (250-350 lux) and a dim red light (about 0.002 lux) was provided during the dark phase. All experiments were performed during the long day period. The animals were provided daily (just before the nocturnal phase) with fresh fruits (6 g of banana) and 15 g of a mixture composed of cereal, milk and egg. Water was provided *ad libitum*. Before entering the study, all animals were checked for health. All experiments were ethically reviewed and carried out in accordance with the European Communities Council Directive 86/609/EEC and the GSK Policy on the Care, Welfare and Treatment of Animals under authorization n°91–582 delivered by the “Direction Départementale de la Protection des Populations de l'Essonne”.

Evaluation of glucose metabolism

Evaluation of fasting blood glucose and glycemic response to Oral Glucose Tolerance Test (OGTT)

Glucose metabolism was assessed three months after the onset of the long day season. Fasting glycaemia was measured using a non-invasive method with a hand-held blood glucose meter (Accu-Chek Active®, Hoffmann-La Roche, Switzerland) at the end of the animal resting phase but before food became available. Oral glucose tolerance was tested using a 1.75 g glucose.kg⁻¹ body mass glucose challenge, consistent with previous research in rodents [37]. Animals received the oral glucose load at the end of the resting phase of the animal in the form of anhydrous glucose (Glucose Rectapur®, BDH Prolabo, UK) diluted in 0.6 ml of water, administered per os over 1 min. The hand-held glucometer required only 5 µl of total blood for each test stick, which were collected in duplicates. The first measurement corresponded to fasting glycemia. Blood was then sampled at 30, 60 and 120 minutes after the glucose challenge. Glucose tolerance index was defined by Area Under Curve (AUC). The AUC was calculated from the results of OGTT using the trapezoidal method (graph pad prism software). A graph was plotted with time (min) as the horizontal axis and glucose level (mmol/l) as the vertical axis, and the area under the line connecting the four measured values was calculated by multiplying time by glucose level. AUC was expressed in mmol/L.min. We used the fasting glucose of each animal as baseline.

Evaluation of fasting blood insulin

Fasting blood sampling for insulin assays was performed at the same time as the sampling for baseline glycaemia. Blood samples were taken via the saphenous

vein, without anesthesia, at the end of the resting phase but before food became available. Blood samples were collected in tubes containing EDTA and represented less than 1% of the blood volume of each animal. Blood samples were centrifuged at 2000 g at 4°C for 30 min. Fasting insulin was measured in the plasma using the Human Insulin assay method (Elisa technology, Cat. # EZHI-14K).

Insulin resistance index: HOMA-IR

Basal insulin resistance was estimated by the HOMA-IR index, which was calculated using fasting glucose and fasting insulin as an assessment of basal insulin resistance [38]. Fasting insulin and glucose collected at the end of the resting phase were used in the HOMA-IR formula as follows: $HOMA-IR = \text{Fasting insulin } (\mu\text{IU/mL}) * \text{Fasting glucose (mmol/L)} / 22.5$ [39].

Evaluation of spatial reference memory performance by Barnes maze test

The spatial memory performances of female mouse lemurs were evaluated with the Barnes circular maze test, a hippocampus-dependent cognitive task that requires spatial reference memory [27, 40]. The apparatus consisted of a circular platform separated into twelve compartments located at the periphery [27]. Each compartment contained one circular hole giving access to a black Plexiglas nestbox which served as refuge. Fourteen objects (with different forms, sizes and colors) were attached around the periphery of the platform to serve as extra-maze visual cues. Before each trial, the platform and the target box were cleaned, and the platform randomly rotated on its central axis to avoid the use of intra-maze cues.

During the testing procedure, animals experienced one day of habituation and training (day 1) and one day of testing (day 2). Each day comprised four trials, each of which began with placement of the animal inside the starting box at the center of the maze. After one minute, the box was lifted to release the animal. The aim was to reach the target box positioned beneath one of the twelve holes, kept constant in the room for all trials. When the animal entered the target box, the trial was stopped, and the animal remained in the target box for 2 minutes.

On day 1, trials 1 and 2 consisted of placing the animal in a four-walled chamber containing only the open target compartment (one-choice test), which provided access to the target box. For trials 3 and 4, the platform comprised six evenly spaced open compartments (six choices test). These two trials permitted the animal to explore the maze, observe the visual cues and further learn the position of the target box.

On day 2 (testing day), twelve compartments were opened during the four trials. Performances were assessed by the number of errors (e.g. the number of entries into compartments containing the non-escape holes) prior to reaching the target box.

The eyes of the lemurs were examined by a veterinary ophthalmologist and no anomalies (e.g. cataract, sclerosis of the lens) were detected that would affect visual acuity.

Magnetic resonance image acquisition and processing

Brain images were recorded on a 7.0 Tesla spectrometer (Varian) using a four channel phase surface coil (RapidBiomed) actively decoupled from the transmitting birdcage probe (RapidBiomed). Briefly, animals were pre-anesthetized with atropine (0.025 mg/kg subcutaneously) and anesthetized with isoflurane (4% for induction and 1-1.5% for maintenance). Respiratory rate was monitored to insure animal stability until the end of the experiment. Body temperature was maintained by an air-heating system. Two-dimensional fast spin-echo images were recorded with an isotropic nominal resolution of 230 μm (128 slices, TR/TE = 10000/17.4 ms; rare factor = 4; acquisition time = 32 min). MR images were zero-filled to reach an apparent isotropic resolution of 115 μm .

Morphometric analyses of the brains were performed using Anatomist® software (http://brainvisa.info/index_f.html). Before morphometric analysis, the brain images were rotated so that those for all mice were in a similar orientation. Morphometric analyses were then performed by measuring the volumes of three brain regions (hippocampus, septum and caudate nucleus) in accordance with the stereotaxic brain atlas of the grey mouse lemur by Bons et al. [41], which was used as a reference for all anatomical landmarks. Each structure was manually outlined on coronal sections using a digitizing tablet (Anatomist drawing tools) as described previously [29]. The quality of the delineation of each structure was checked by examination of axial sections. For each animal, the intracranial volume was also measured. The reported volume for each brain structure was normalized by the intracranial volume.

Data analysis

Data were presented as mean \pm SEM. Statistical analysis was performed by Mann Whitney test and Spearman's correlation using graph pad prism software. We used Two way Anova with repeated-measures and Bonferroni tests for post hoc analyses to compare glucose data after oral glucose loading. Principal

component analysis and presentation of PCA map were performed using R version 3.2.0. P values less than 0.05 were considered statistically significant.

CONFLICTS OF INTEREST

The authors declare no competing financial interests.

FUNDING

This work was financially supported as part of the Pharma-Cog consortium by the European Community's Seventh Framework Programme (FP7/2007-2013) for the Innovative Medicine Initiative under Grant Agreement n°115009 (For further information please refer to www.pharmacog.org.) and the USPC (Programme Dynamique du Vieillir).

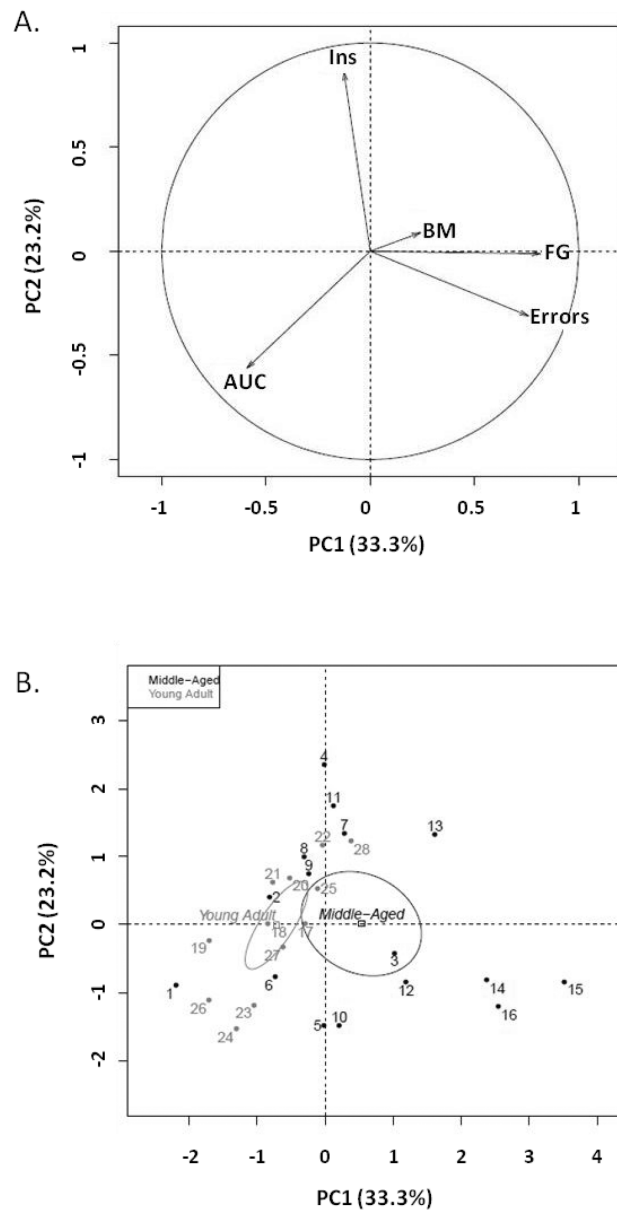
REFERENCES

1. Brennan LJ, Strauss J. Cognitive impairment in older adults and oral health considerations: treatment and management. *Dent Clin North Am*. 2014; 58:815–28. doi: 10.1016/j.cden.2014.07.001
2. Cooper C, Sommerlad A, Lyketsos CG, Livingston G. Modifiable predictors of dementia in mild cognitive impairment: a systematic review and meta-analysis. *Am J Psychiatry*. 2015; 172:323–34. doi: 10.1176/appi.ajp.2014.14070878
3. Langa KM, Levine DA. The diagnosis and management of mild cognitive impairment: a clinical review. *JAMA*. 2014; 312:2551–61. doi: 10.1001/jama.2014.13806
4. Petersen RC, Jack CR Jr, Xu YC, Waring SC, O'Brien PC, Smith GE, Ivnik RJ, Tangalos EG, Boeve BF, Kokmen E. Memory and MRI-based hippocampal volumes in aging and AD. *Neurology*. 2000; 54:581–87. doi: 10.1212/WNL.54.3.581
5. Whitwell JL, Przybelski SA, Weigand SD, Knopman DS, Boeve BF, Petersen RC, Jack CR Jr. 3D maps from multiple MRI illustrate changing atrophy patterns as subjects progress from mild cognitive impairment to Alzheimer's disease. *Brain*. 2007; 130:1777–86. doi: 10.1093/brain/awm112
6. Li X, Ma C, Zhang J, Liang Y, Chen Y, Chen K, Wang J, Zhang Z, Wang Y, and Beijing Ageing Brain Rejuvenation Initiative. Prevalence of and potential risk factors for mild cognitive impairment in community-dwelling residents of Beijing. *J Am Geriatr Soc*. 2013; 61:2111–19. doi: 10.1111/jgs.12552
7. Luchsinger JA, Reitz C, Patel B, Tang MX, Manly JJ, Mayeux R. Relation of diabetes to mild cognitive impairment. *Arch Neurol*. 2007; 64:570–75. doi: 10.1001/archneur.64.4.570
8. Whitmer RA, Sidney S, Selby J, Johnston SC, Yaffe K. Midlife cardiovascular risk factors and risk of dementia in late life. *Neurology*. 2005; 64:277–81. doi: 10.1212/01.WNL.0000149519.47454.F2
9. Awad N, Gagnon M, Messier C. The relationship between impaired glucose tolerance, type 2 diabetes, and cognitive function. *J Clin Exp Neuropsychol*. 2004; 26:1044–80. doi: 10.1080/13803390490514875
10. Biessels GJ, Staekenborg S, Brunner E, Brayne C, Scheltens P. Risk of dementia in diabetes mellitus: a systematic review. *Lancet Neurol*. 2006; 5:64–74. doi: 10.1016/S1474-4422(05)70284-2
11. Profenno LA, Porsteinsson AP, Faraone SV. Meta-analysis of Alzheimer's disease risk with obesity, diabetes, and related disorders. *Biol Psychiatry*. 2010; 67:505–12. doi: 10.1016/j.biopsych.2009.02.013
12. Alberti KG, Zimmet PZ. Definition, diagnosis and classification of diabetes mellitus and its complications. Part 1: diagnosis and classification of diabetes mellitus provisional report of a WHO consultation. *Diabet Med*. 1998; 15:539–53. doi: 10.1002/(SICI)1096-9136(199807)15:7<539::AID-DIA668>3.0.CO;2-S
13. den Heijer T, Vermeer SE, van Dijk EJ, Prins ND, Koudstaal PJ, Hofman A, Breteler MM. Type 2 diabetes and atrophy of medial temporal lobe structures on brain MRI. *Diabetologia*. 2003; 46:1604–10. doi: 10.1007/s00125-003-1235-0
14. Azpurua J, Yang JN, Van Meter M, Liu Z, Kim J, Lobo Ladd AA, Coppi AA, Gorbunova V, Seluanov A. IGF1R levels in the brain negatively correlate with longevity in 16 rodent species. *Aging (Albany NY)*. 2013; 5:304–14. doi: 10.18632/aging.100552
15. Unwin N, Shaw J, Zimmet P, Alberti KG. Impaired glucose tolerance and impaired fasting glycaemia: the current status on definition and intervention. *Diabet Med*. 2002; 19:708–23. doi: 10.1046/j.1464-5491.2002.00835.x
16. Backeström A, Eriksson S, Nilsson LG, Olsson T, Rolandsson O. Glucose but not insulin or insulin resistance is associated with memory performance in middle-aged non-diabetic women: a cross sectional study. *Diabetol Metab Syndr*. 2015; 7:20. doi: 10.1186/s13098-015-0014-7
17. Cherbuin N, Sachdev P, Anstey KJ. Higher normal fasting plasma glucose is associated with hippocampal atrophy: the PATH Study. *Neurology*. 2012; 79:1019–26. doi: 10.1212/WNL.0b013e31826846de
18. Jagielski AC, Jiang CQ, Xu L, Taheri S, Zhang WS, Cheng KK, Lam TH, Thomas GN. Glycaemia is

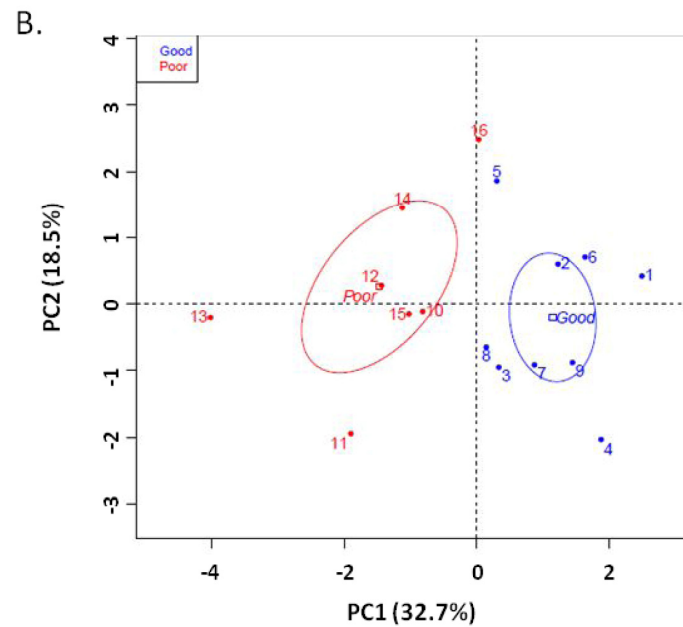
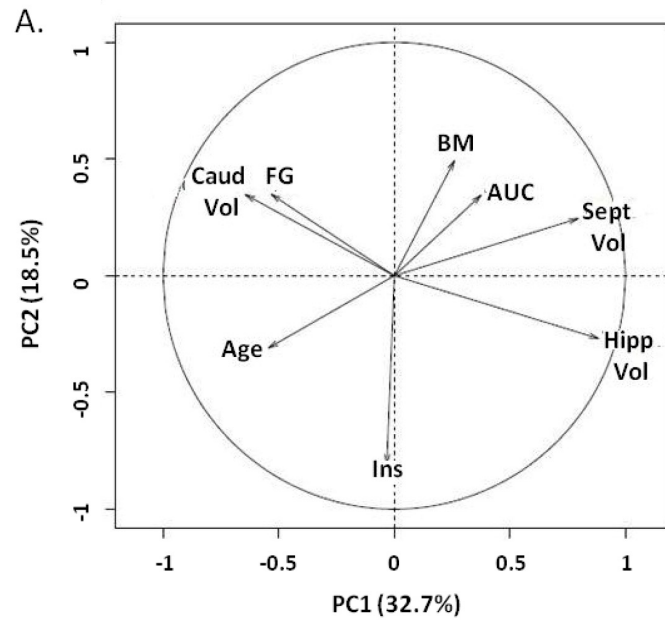
- associated with cognitive impairment in older adults: the Guangzhou Biobank Cohort Study. *Age Ageing*. 2015; 44:65–71. doi: 10.1093/ageing/afu088
19. Mortby ME, Janke AL, Anstey KJ, Sachdev PS, Cherbuin N. High “normal” blood glucose is associated with decreased brain volume and cognitive performance in the 60s: the PATH through life study. *PLoS One*. 2013; 8:e73697. doi: 10.1371/journal.pone.0073697
 20. Sanz CM, Ruidavets JB, Bongard V, Marquié JC, Hanaire H, Ferrières J, Andrieu S. Relationship between markers of insulin resistance, markers of adiposity, HbA1c, and cognitive functions in a middle-aged population-based sample: the MONA LISA study. *Diabetes Care*. 2013; 36:1512–21. doi: 10.2337/dc12-1017
 21. Stranahan AM, Norman ED, Lee K, Cutler RG, Telljohann RS, Egan JM, Mattson MP. Diet-induced insulin resistance impairs hippocampal synaptic plasticity and cognition in middle-aged rats. *Hippocampus*. 2008; 18:1085–88. doi: 10.1002/hipo.20470
 22. van der Borght K, Köhnke R, Göransson N, Deierborg T, Brundin P, Erlanson-Albertsson C, Lindqvist A. Reduced neurogenesis in the rat hippocampus following high fructose consumption. *Regul Pept*. 2011; 167:26–30. doi: 10.1016/j.regpep.2010.11.002
 23. Chandrasekera PC, Pippin JJ. Of rodents and men: species-specific glucose regulation and type 2 diabetes research. *ALTEX*. 2014; 31:157–76. doi: 10.14573/1309231
 24. Lai M, Chandrasekera PC, Barnard ND. You are what you eat, or are you? The challenges of translating high-fat-fed rodents to human obesity and diabetes. *Nutr Diabetes*. 2014; 4:e135. doi: 10.1038/nutd.2014.30
 25. Languille S, Blanc S, Blin O, Canale CI, Dal-Pan A, Devau G, Dhenain M, Dorieux O, Epelbaum J, Gomez D, Hardy I, Henry PY, Irving EA, et al. The grey mouse lemur: a non-human primate model for ageing studies. *Ageing Res Rev*. 2012; 11:150–62. doi: 10.1016/j.arr.2011.07.001
 26. Lavery WL. How relevant are animal models to human ageing? *J R Soc Med*. 2000; 93:296–98.
 27. Languille S, Liévin-Bazin A, Picq JL, Louis C, Dix S, De Barry J, Blin O, Richardson J, Bordet R, Schenker E, Djelti F, Aujard F. Deficits of psychomotor and mnesic functions across aging in mouse lemur primates. *Front Behav Neurosci*. 2015; 8:446. doi: 10.3389/fnbeh.2014.00446
 28. Bertrand A, Pasquier A, Petiet A, Wiggins C, Kraska A, Joseph-Mathurin N, Aujard F, Mestre-Francés N, Dhenain M. Micro-MRI study of cerebral aging: ex vivo detection of hippocampal subfield reorganization, microhemorrhages and amyloid plaques in mouse lemur primates. *PLoS One*. 2013; 8:e56593. doi: 10.1371/journal.pone.0056593
 29. Picq JL, Aujard F, Volk A, Dhenain M. Age-related cerebral atrophy in nonhuman primates predicts cognitive impairments. *Neurobiol Aging*. 2012; 33:1096–109. doi: 10.1016/j.neurobiolaging.2010.09.009
 30. Dhenain M, Chenu E, Hisley CK, Aujard F, Volk A. Regional atrophy in the brain of lissencephalic mouse lemur primates: measurement by automatic histogram-based segmentation of MR images. *Magn Reson Med*. 2003; 50:984–92. doi: 10.1002/mrm.10612
 31. Khakpai F, Nasehi M, Haeri-Rohani A, Eidi A, Zarrindast MR. Septo-hippocampo-septal loop and memory formation. *Basic Clin Neurosci*. 2013; 4:5–23.
 32. Okada K, Nishizawa K, Kobayashi T, Sakata S, Kobayashi K. Distinct roles of basal forebrain cholinergic neurons in spatial and object recognition memory. *Sci Rep*. 2015; 5:13158. doi: 10.1038/srep13158
 33. Kraska A, Dorieux O, Picq JL, Petit F, Bourrin E, Chenu E, Volk A, Perret M, Hantraye P, Mestre-Frances N, Aujard F, Dhenain M. Age-associated cerebral atrophy in mouse lemur primates. *Neurobiol Aging*. 2011; 32:894–906. doi: 10.1016/j.neurobiolaging.2009.05.018
 34. Skinner JS, Morgan A, Hernandez-Saucedo H, Hansen A, Corbett S, Arbuckle M, Leverenz JB, Wilkins CH, Craft S, Baker LD. Associations between Markers of Glucose and Insulin Function and Cognitive Function in Healthy African American Elders. *J Gerontol Geriatr Res*. 2015; 4:232. doi: 10.4172/2167-7182.1000232
 35. Fujikawa T, Coppari R. Hypothalamic-mediated control of glucose balance in the presence and absence of insulin. *Aging (Albany NY)*. 2014; 6:92–97. doi: 10.18632/aging.100641
 36. Cai D, Liu T. Inflammatory cause of metabolic syndrome via brain stress and NF-κB. *Aging (Albany NY)*. 2012; 4:98–115. doi: 10.18632/aging.100431
 37. Barrett K, McGrowder D, Brown P, Ragoobirsingh D. Increased PC-1 phosphodiesterase activity and inhibition of glucose uptake in adipocytes of type 2 diabetic rats. *Mol Cell Biochem*. 2006; 293:9–14. doi: 10.1007/s11010-006-0387-x

38. Keskin M, Kurtoglu S, Kendirci M, Atabek ME, Yazici C. Homeostasis model assessment is more reliable than the fasting glucose/insulin ratio and quantitative insulin sensitivity check index for assessing insulin resistance among obese children and adolescents. *Pediatrics*. 2005; 115:e500–03.
doi: 10.1542/peds.2004-1921
39. Matthews DR, Hosker JP, Rudenski AS, Naylor BA, Treacher DF, Turner RC. Homeostasis model assessment: insulin resistance and beta-cell function from fasting plasma glucose and insulin concentrations in man. *Diabetologia*. 1985; 28:412–19. doi: 10.1007/BF00280883
40. Barnes CA. Memory deficits associated with senescence: a neurophysiological and behavioral study in the rat. *J Comp Physiol Psychol*. 1979; 93:74–104. doi: 10.1037/h0077579
41. Bons N, Silhol S, Barbié V, Mestre-Francés N, Albe-Fessard D. A stereotaxic atlas of the grey lesser mouse lemur brain (*Microcebus murinus*). *Brain Res Bull*. 1998; 46:1–173.
doi: 10.1016/S0361-9230(97)00458-9

SUPPLEMENTARY MATERIAL



Supplementary Figure 1. PCA on young and middle-aged animals. (A) Variable factor map. Age was considered as qualitative variable. Body mass (BM), number of errors (errors), fasting blood glucose (FG), fasting insulinemia (Ins) and glucose tolerance index (AUC). **(B)** Individual dispersion of PCA: x-axis: principal component 1 (PC1: 32.3%), y axis: principal component 2 (PC2: 23.2%). Young animals (grey symbols: range: 2.4 to 3.5 years old) were labeled 17 to 28 and middle-aged animals (black symbols: range: 4.1 to 6.1 years old) were labeled 1 to 16.



Supplementary Figure 2. PCA on middle-aged animals with number of errors as qualitative variable. (A) Variable factor map. Number of errors was considered as qualitative variable. Age, body mass (BM), volume of hippocampus (Hipp Vol), septum (Sept Vol) and caudate nucleus (Caud Vol), fasting blood glucose (FG), insulinemia (Ins) and glucose tolerance index (AUC). (B) Individual dispersion of PCA: x-axis: principal component 1 (PC1: 32.7%), y axis: principal component 2 (PC2: 18.5%). A threshold of 5 errors defined two groups: good performers (number of errors inferior to 5, blue) and poor performers (number of errors superior to 5, red).