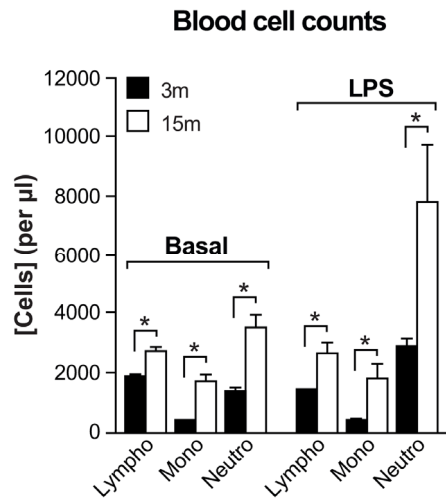
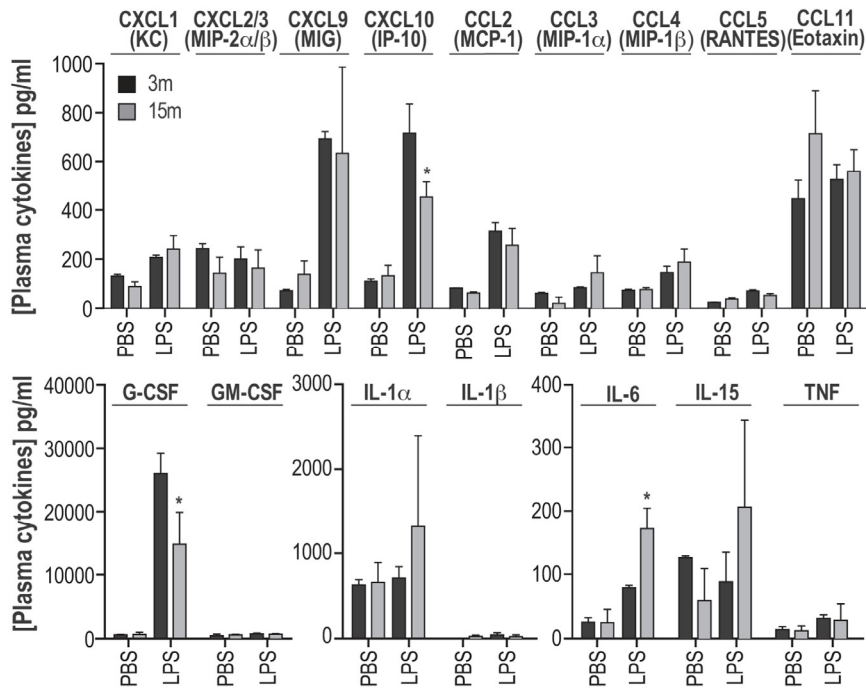


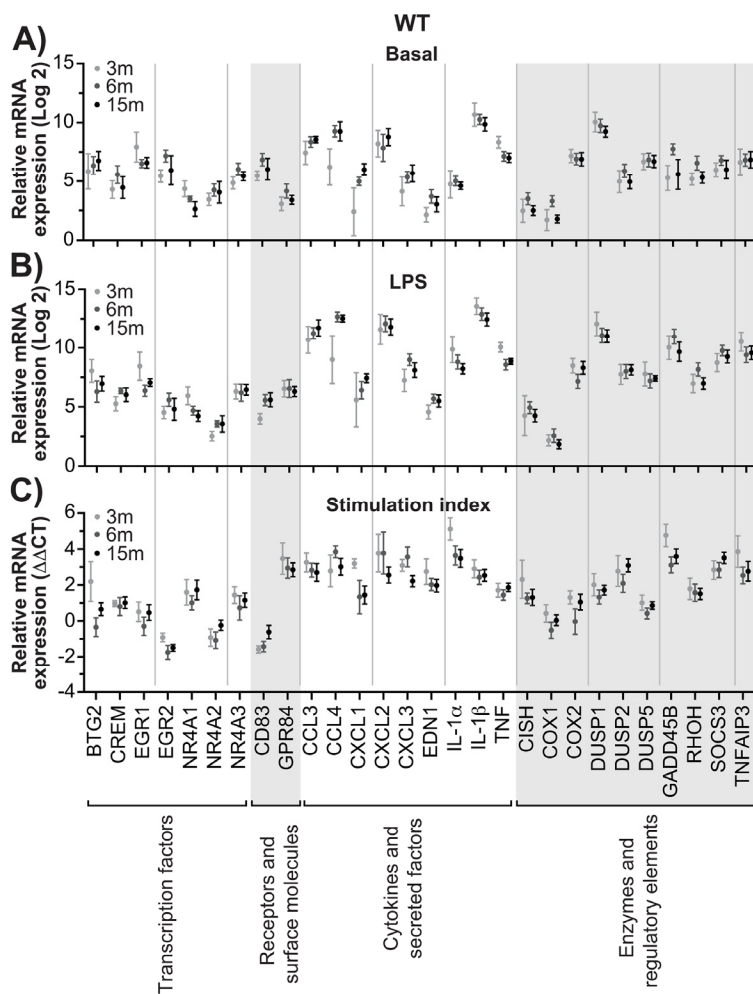
SUPPLEMENTARY MATERIAL



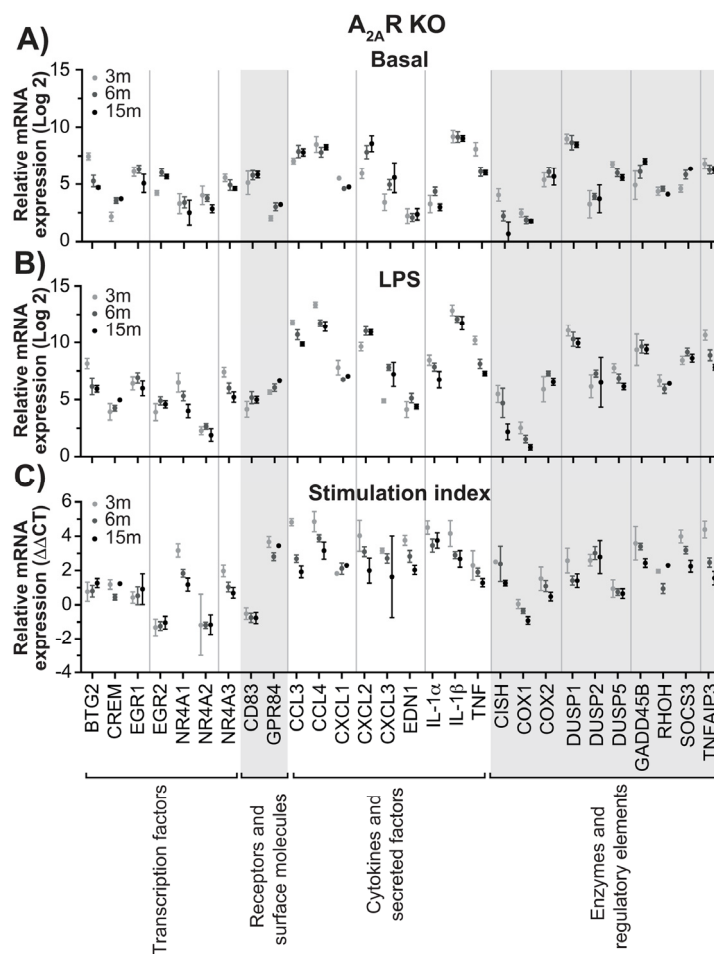
Supplementary Figure S1. Blood cell counts. Dorsal air pouches raised on wild-type (WT) mice aged 3 or 15 months were injected with either saline (Basal) or LPS for 4 h. Circulating lymphocytes, monocytes, and neutrophils were then enumerated as described in Methods. Results are expressed as mean ± SEM for *n* = 12 mice per group. *Significantly different.



Supplementary Figure S2. Plasma cytokine levels. Dorsal air pouches raised on wild-type (WT) mice aged 3 or 15 months were injected with either saline (Basal) or LPS. Circulating plasma cytokine levels reached 4 h later were measured as described in Methods. Results are expressed as mean ± SEM for *n* = 12 mice per group. *Significantly different.



Supplementary Figure S3. Gene expression in leukocytes recovered from dorsal air pouches raised on wild-type (WT) mice. The abundance of mRNA transcript 4h after injection with saline (Basal) or LPS was measured for each gene as described in *Methods*. (A) Basal; (B) LPS; (C) Ratios of stimulated to basal expression levels (stimulation index). Values were calculated from the mean threshold cycle \pm SEM (cells from 8 mice were pooled for each value, $n = 5$ experiments), relative to COX-1 in 3-month-old WT mice.



Supplementary Figure S4. Gene expression in leukocytes recovered from dorsal air pouches raised on A_{2A}R-knockout (KO) mice. Please refer to the legend for Suppl. Fig. S3.