

Evaluation of the diagnostic ability of laminin gene family for pancreatic ductal adenocarcinoma

Chengkun Yang¹, Zhengqian Liu¹, Xianmin Zeng¹, Qiongyuan Wu², Xiwen Liao¹, Xiangkun Wang¹, Chuangye Han¹, Tingdong Yu¹, Guangzhi Zhu¹, Wei Qin¹, Tao Peng¹

¹Department of Hepatobiliary Surgery, The first Affiliated Hospital of Guangxi Medical University, Nanning, Guangxi Province, China

²Department of Tuina, The First Affiliated Hospital of Guangxi University of Chinese Medicine, Nanning, Guangxi Province, China

Correspondence to: Tao Peng; email: pengtaogmu@163.com

Keywords: PDAC, laminin, CA19-9, prognosis, diagnosis

Received: February 25, 2019

Accepted: May 29, 2019

Published: June 10, 2019

Copyright: Yang et al. This is an open-access article distributed under the terms of the Creative Commons Attribution License (CC BY 3.0), which permits unrestricted use, distribution, and reproduction in any medium, provided the original author and source are credited.

ABSTRACT

A poor outcome for pancreatic ductal adenocarcinoma (PDAC) patients is still a challenge worldwide. The aim of our study is to investigate the potential of key laminin subunits for being used both as a diagnostic and prognostic biomarker for PDAC patients. We evaluated the mRNA expression and prognostic value of laminin gene family in PDAC tissues using online public databases. Moreover, the relationship between key laminin subunits in PDAC blood cells and circulating tumor cells (CTCs) and the distinguishing ability of joint serum levels with carbohydrate antigen 19-9 (CA19-9) was analyzed. Two key differentially expressed subunits (LAMA3 and LAMC2) that are associated with prognosis of PDAC patients were found to show a potential for distinguishing between PDAC and non-tumor tissues. LAMA3 and LAMC2 expression were found to be positively related with CTC quantity in PDAC blood ($R=0.628$, $p=0.029$; $R=0.776$, $p=0.003$, respectively) using IgG chips. Furthermore, serum LAMC2 levels offered significant improvement over using CA19-9 alone for the discrimination of PDAC. Joint serum LAMC2 and CA19-9 levels increased the net benefit proportion in early stage/operational PDAC patients. Using integrated profiling, we identified LAMA3 and LAMC2 as potential therapeutic targets and prognostic markers for PDAC, for which further validation is warranted.

INTRODUCTION

Pancreatic cancer is the ninth most common cancer in the United States, with an average of 43,090 deaths from pancreatic cancer reported every 5 years, ranking it as the fourth leading cause of cancer-related death [1]. There is also a continuous increase in pancreatic cancer incidence and mortality in China. As per current statistics, it is the seventh most common cancer diagnosed in men and the fourteenth in women, and the sixth leading cause of cancer deaths in men and eighth in women, with 65,600 new cases of pancreatic cancer (39,200 for men and 26,400 for women) and 63,500 deaths (26,400 for men and 25,800 for women) being

reported in 2012 [2]. The relative 5-year survival rate is merely 6% due to its aggressive tumor biology that is accompanied by extensive local and early metastatic spread [3]. The most common histological type of pancreatic cancer is pancreatic ductal adenocarcinoma (PDAC), which accounts for most human pancreatic cancer cases (>95%) [4]. The most commonly used tumor marker, carbohydrate antigen 19-9 (CA19-9), is not very accurate for PDAC detection [5, 6]. CA19-9 is not obviously elevated during the early stages of the disease but is elevated in other benign conditions and multiple cancer types [7, 8]. As the most commonly used biomarker for the diagnosis of pancreatic cancer, sensitivity and specificity of CA19-9 can be as low as

70% with a 5% error rate [7, 9]. Taken together, it is critical to identify other biomarkers that can improve or complement the sensitivity and specificity of CA19-9.

Laminins are a family of extracellular matrix glycoproteins that are the major non-collagenous constituent in basement membranes. They have been implicated in a wide variety of biological processes including cell adhesion, differentiation, migration, signaling, neurite outgrowth and metastasis [10]. At present, human beings are known to have five α , four β , and three γ chains, encoding by LAMA1, LAMA2, LAMA3, LAMA4, LAMA5; LAMB1, LAMB2, LAMB3, LAMB4; and LAMC1, LAMC2 and LAMC3, respectively [11, 12]. Many studies have reported that the abnormal expression of genes of this family is associated with biological characteristics and clinical outcomes of cancers, such as gastric cancer [13], hepatocellular carcinoma [14], renal cell carcinoma [15], colorectal cancer [16] and lung cancer [17]. However, it remains unknown whether the key subunits of the laminin gene family are able to act as diagnostic, prognostic or therapeutic biomarkers for PDAC patients.

In the present study, we analyzed the expression and prognostic value of genes of laminin family in PDAC tissues using public online databases. In order to investigate potential pathways and related molecular mechanisms, we further performed enrichment and interaction network analysis. Moreover, the significance of the expression of key subunits in PDAC blood cells and circulating tumor cells (CTCs) and their serum levels were analyzed.

RESULTS

Initial screening of differential genes in pancreatic cancer and survival analysis

The differential expression of genes of laminin family in The Cancer Genome Atlas (TCGA) pancreatic adenocarcinoma (PAAD) cohort tumor and non-tumor tissues analyzed by Gene Expression Profiling Interactive Analysis (GEPIA, <http://gepia.cancer-pku.cn/>). All parameters were set to default values and patients were divided into two groups based on median expression. The results show that 9 laminin subunit genes (LAMA2, LAMA3, LAMA4, LAMA5, LAMB1, LAMB2, LAMB3, LAMC1, LAMC2) were highly expressed in tumor tissues of PAAD, with differences that were statistically significant (Figure 1A). In the survival analysis, high LAMA3 and LAMB3 expression groups were found to be related to adverse OS outcome in the PAAD cohort (log-rank $p=0.0031$ and 0.0022 , respectively; Figure 1B). Additionally, high LAMA4, LAMB3 and LAMC2 expression groups were found to

have a higher risk with regard to DFS in PAAD patients (HR=1.9, 1.7 and 1.8, respectively; Figure 1B).

Kyoto encyclopedia of genes and genomes (KEGG) pathway, gene ontology (GO) term and interaction network analysis of genes of laminin family

The KEGG pathway and GO term analyses were performed using the *ClusterProfiler* R package (Supplementary Figure 1). The results demonstrated that products encoded by the genes of laminin family may be involved in the formation of extracellular matrices and are associated with cellular focal adhesion. Furthermore, genes of this family are involved in the PI3K-Akt signaling pathway and were found to partially bind to integrin subunits (ITG) in the enrichment analysis (Supplementary Figure 1). The gene-gene interaction network generated using GeneMANIA showed that genes in the laminin family may be associated with ITG and genes of netrin family (Figure 2A). In the protein-protein interaction network analysis conducted using the Search Tool for the Retrieval of Interacting Genes/Proteins (STRING), the laminin proteins were found to have a co-expression relationship with ITG and nidogen proteins (Figure 2B).

Profiling of the expression in TCGA of various cancers and survival analysis using the gene expression omnibus (GEO) database for further selection

For the laminin subunits (LAMA3, LAMA4, LAMB3 and LAMC2) that were found to be associated with the prognosis of pancreatic cancer, we further analyzed their TCGA tumor tissue expression profiles (Figure 2C–2F). The results show that the expression of these genes may be upregulated in some of digestive tract tumors. Using the GSE21501 PDAC cohort, we further studied the relationship between the expression of genes of laminin family and prognosis of PDAC patients. Setting the median as the cutoff value, the Kaplan–Meier survival curves indicated that LAMA3 and LAMC2 expression are associated with the OS of PDAC patients (log-rank $p=0.002$ and 0.017 , respectively; Figure 3A–3B). Although the survival analysis showed that LAMA4 gene expression and OS of PDAC did not reach statistical significance, it was also found to be associated with the 3-year OS of PDAC (Figure 3C–3D). However, no statistically significance was found in the association between LAMB3 expression and the OS of PDAC patients (Supplementary Table 1). The combined survival analysis demonstrated that the combination of high LAMA3 expression along with high or low expression of LAMC2 can have an adverse effect on the OS of PDAC patients (Figure 3E, Supplementary Table 2).

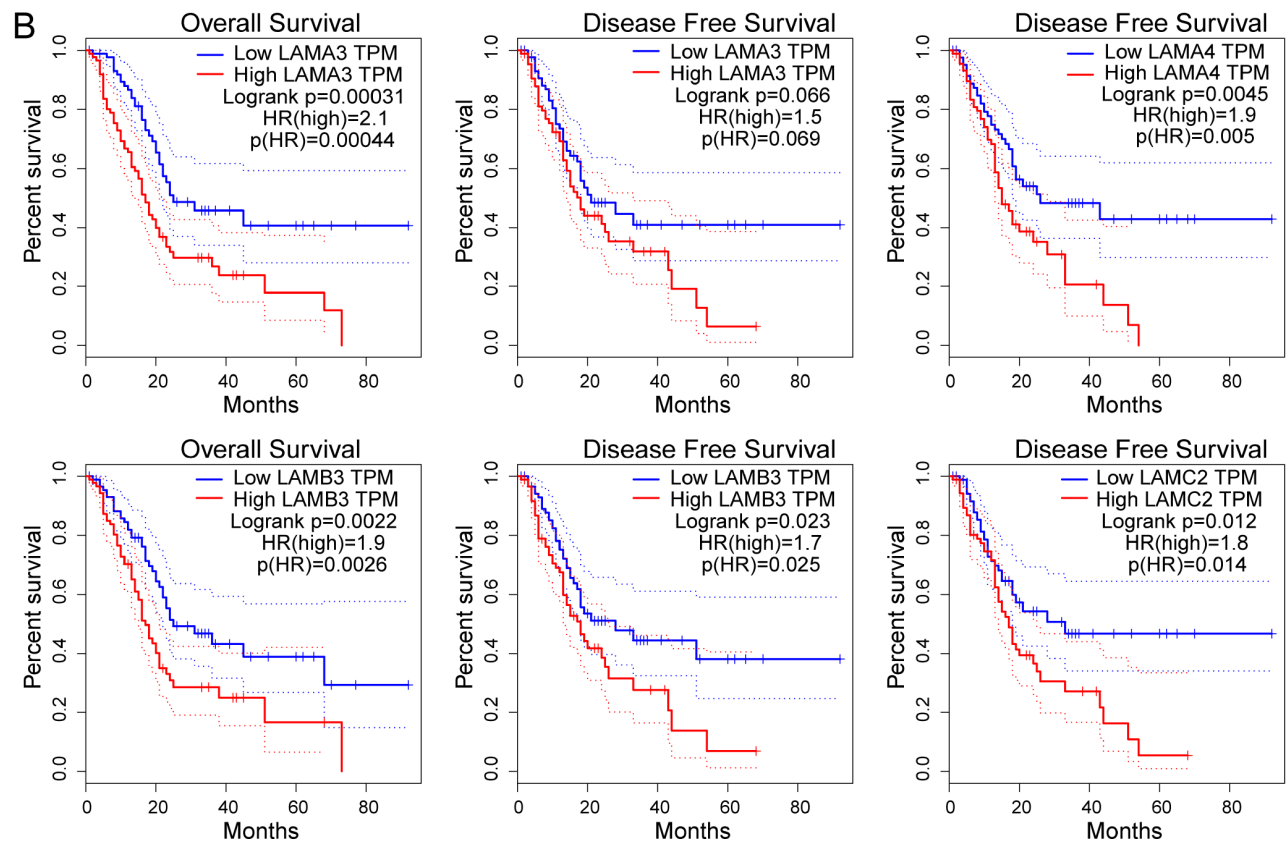
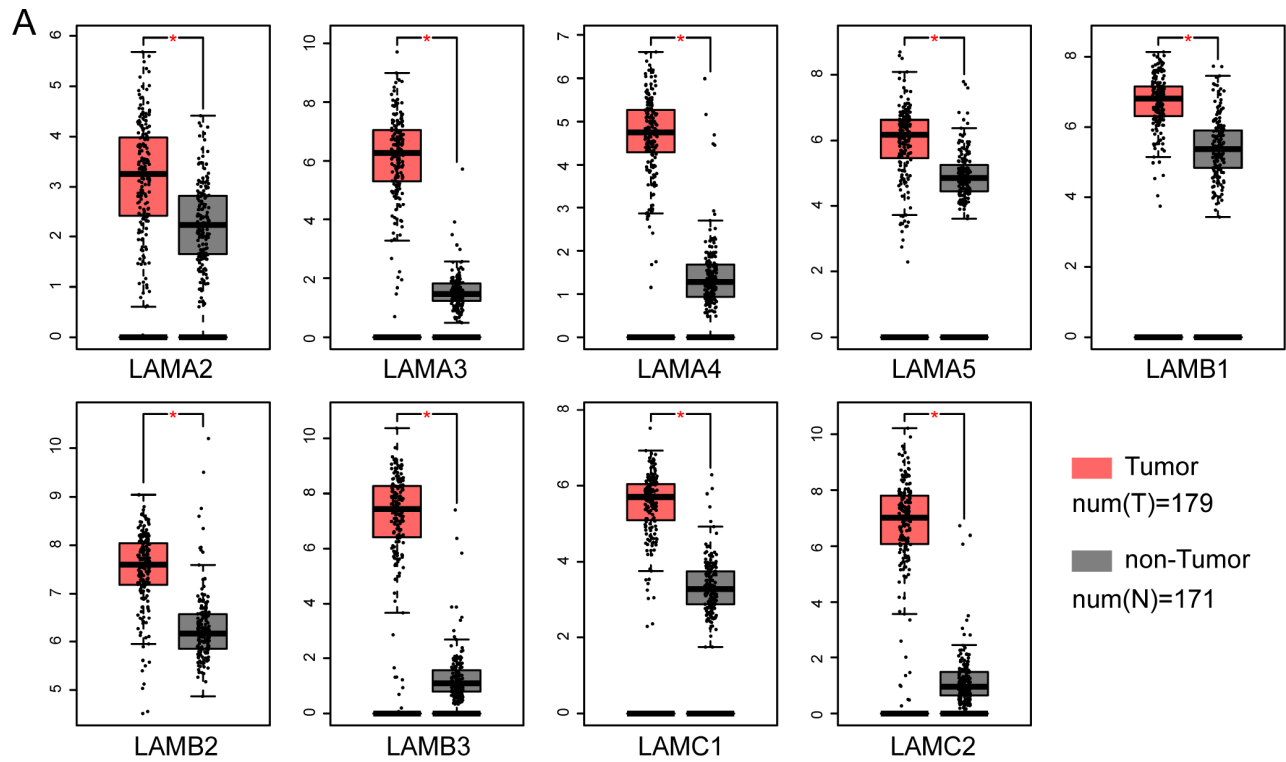


Figure 1. Expression and survival analysis of the laminin gene family in TCGA PAAD cohort. (A) Differential expression of genes of the laminin family in pancreatic cancer and non-tumor tissues. The red asterisk indicates that the difference is statistically significant ($p < 0.05$). **(B)** Kaplan–Meier survival curves of the OS and DFS for high and low laminin gene expression groups, depicted using GEPIA. The cutoff value was set at median expression. The dotted line indicates a 95% confidence interval.

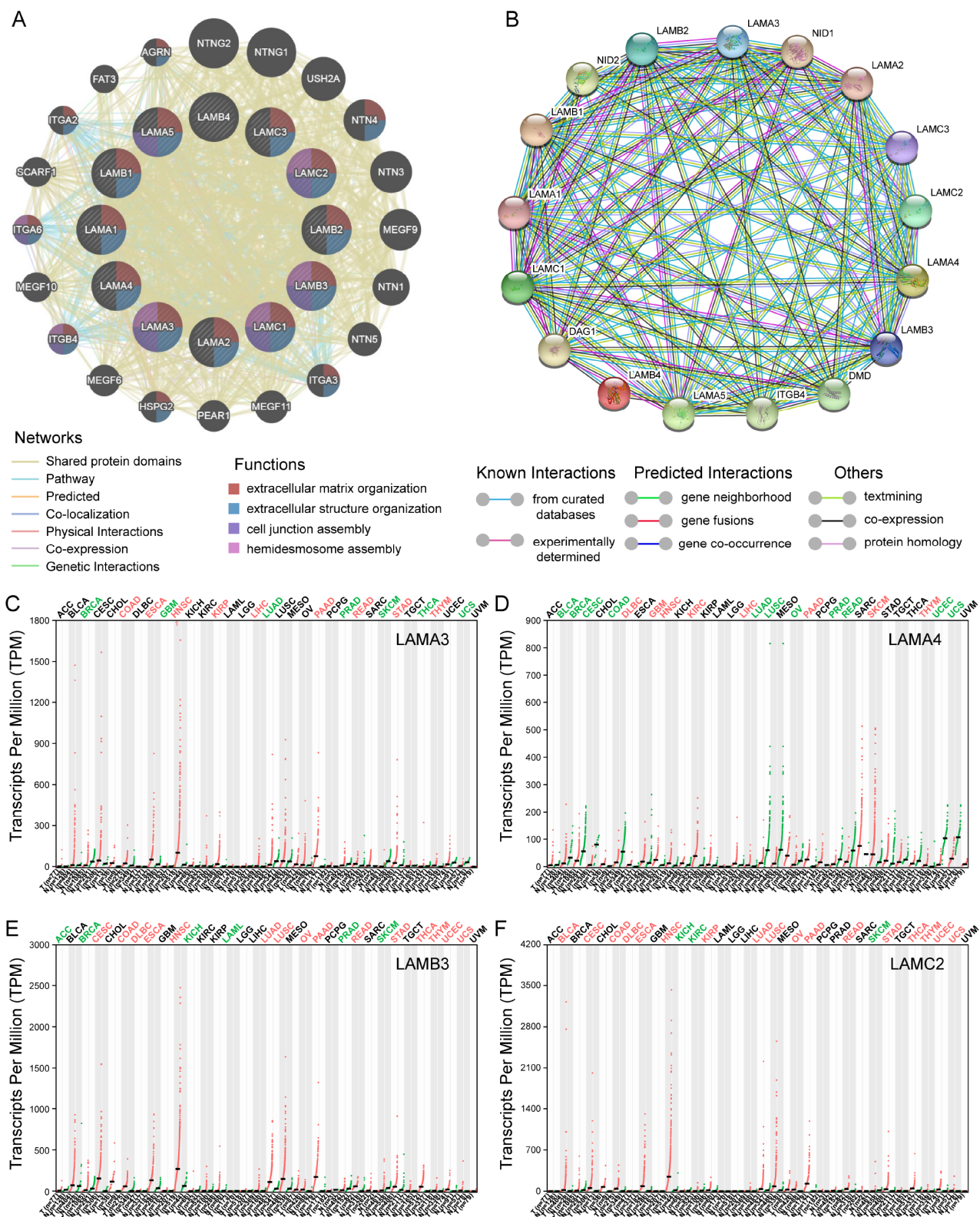


Figure 2. Gene-gene interaction and protein-protein interaction network of genes of the laminin family, and differential expression of laminin genes in various tumor and non-tumor tissues. (A) The gene network associated with the laminin gene family, drawn using GeneMANIA. The colored patches on the circle indicate the function of the gene. **(B)** A network diagram of interactions between proteins encoded by genes of the laminin family, drawn using STRING. **(C–F)** The difference in expression of LAMA3, LAMA4, LAMB3 and LAMC2 in various tissues in TCGA, drawn using GEPIA. Green color indicates that the gene is downregulated, whereas red color indicates upregulation of the gene.

The area under the curve (AUC) of the time-dependent receiver operating characteristic (ROC) curve for LAMA3 and LAMC2 indicating 1-, 2- and 3-year OS fluctuated between 0.6 and 0.7 (Figure 3F–3G).

Tissue expression profiling and diagnostic efficacy evaluation of LAMA3 and LAMC2 in PDAC

After filtering using the previous steps, we explored the expression of LAMA3 and LAMC2 in Genotype-Tissue

Expression (GTEx) normal tissues and found that the expression of LAMA3 and LAMC2 were downregulated in pancreas tissues (Supplementary Figure 2). Using a selection process to identify tumor histology diagnosis of PDAC sets in GEO, 9 sets were included in this study (Supplementary Table 3). The results show that LAMA3 and LAMC2 expression is significantly upregulated in PDAC tumor tissues in most studies (Figure 4A–4I). The expression of LAMA3, LAMA4, LAMB3 and LAMC2 in each

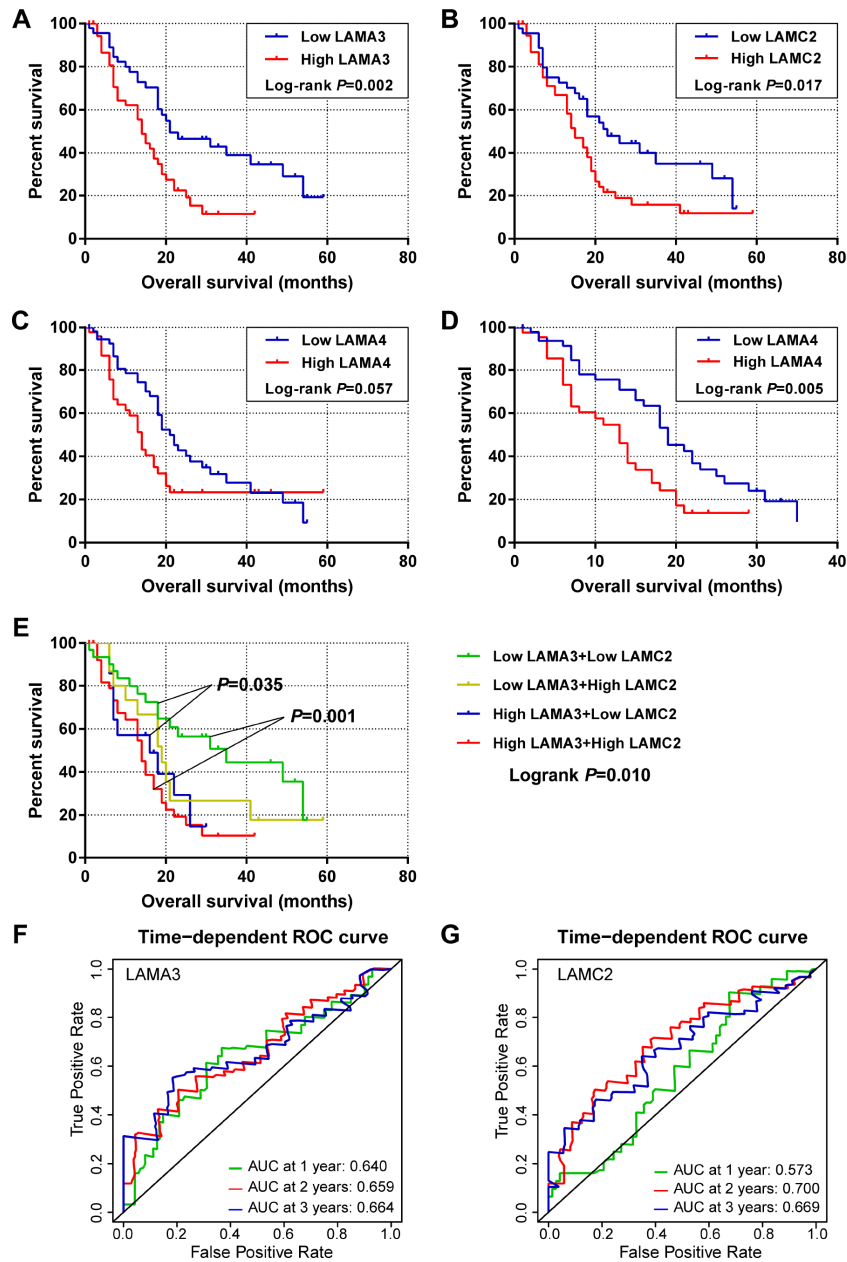


Figure 3. Survival and survivalROC analysis of LAMA3 and LAMC2 expression in the GSE21501 PDAC cohort. (A–C) Kaplan–Meier survival curves for OS of the LAMA3, LAMC2 and LAMA4 gene expression groups. (D) Kaplan–Meier survival curves for 3-year OS for LAMA4 expression groups. (E) Kaplan–Meier survival curves for OS of the combined LAMA3 and LAMC2 gene expression groups. (F–G) Time-dependent ROC curve for LAMA3 and LAMC2 expression in PDAC patients.

sample of the 9 sets, and the expression of all laminin genes in GTEx normal tissues are shown in the heatmap (Supplementary Figure 3 and Figure 4A, respectively). The ROC analysis of LAMA3, LAMC2 and their

combined expression in PDAC sets indicate that both genes display high accuracy in distinguishing between tumor and non-tumor tissues (the AUCs of the ROC curves were >0.70, Figure 4J–4R). The summary

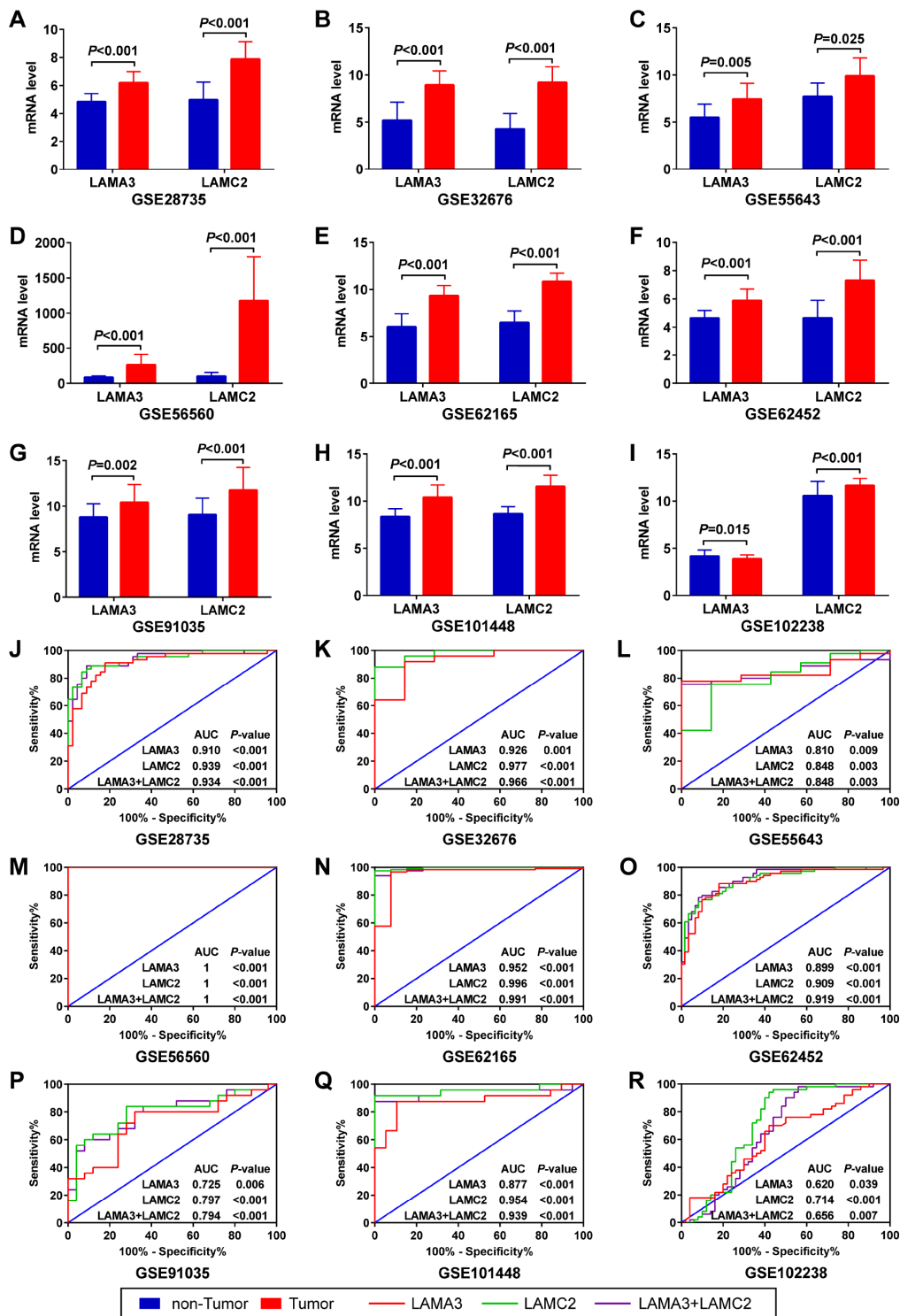


Figure 4. Expression and ROC analysis of LAMA3 and LAMC2 in GEO PDAC and non-tumor tissues. (A–I) Comparison of LAMA3 and LAMC2 gene expression in tumor and non-tumor tissues. **(J–R)** ROC curve of LAMA3, LAMC2 and combined expression for distinguishing between PDAC and non-tumor tissues.

receiver operating characteristic (SROC) curves indicate that the AUCs of LAMA3 and LAMC2 are more than 0.90 in PDAC patients (Figure 5).

Joint diagnostic value and benefit comparison of serum LAMC2 and CA19-9 levels

Compared with normal or benign pancreatic tissues, the serum levels of LAMC2 and CA19-9 have been found to be elevated in PDAC patients from USA, German and Japan cohorts, with different groups reaching varied levels of statistical significance ($p < 0.05$, Figure 6A–6F). Results of the combined analysis suggest that serum level of LAMC2 and CA19-9 were higher in the PDAC patients than that of non-tumor patients/healthy donor from USA, German and Japan cohorts ($p < 0.05$, Figure 6G–6I, Supplementary Table 3). Furthermore, serum LAMC2 levels can be used to significantly improve the diagnostic accuracy of using CA19-9 for PDAC patients, since the AUC for distinguishing between tumor and non-tumor tissues for the combined analysis of LAMC2 and CA19-9 (AUC=0.922, 0.792 and 0.888, respectively) in two of three cohorts were higher than the AUC values obtained for CA19-9 alone (AUC=0.863, 0.847 and 0.827, respectively; Figure 6J–6L). In the decision curve analysis, we found that the proportion of standardized net benefit populations increase rapidly for serum CA19-9 when the threshold probability is between 0.3-0.4 (Figure 7A–7D). Net benefit populations improved in the joint LAMC2 and CA19-9 analysis at a low threshold probability, indicating that there is diagnostic complementarity between LAMC2 and CA19-9 (cost

and benefit ratio is significantly reduced) (Figure 7A–7D). The standardized net benefit proportion of every 1000 resamples had a threshold probability of less than 0.3 and was higher than other thresholds (Figure 7E). Moreover, joint use for the diagnosis of significantly increased the percentage of the early stage/operable PDAC benefiting population, suggesting that the clinician can diagnose PDAC in the patient group earlier (Figure 7F).

Blood cell and CTC expression profiling of LAMA3 and LAMC2 and CTC number evaluation in PDAC patients

The expression of LAMA3 and LAMC2 in PDAC CTC were higher than that of healthy donor whole blood cells when the analysis was performed using GSE40171 expression profiling (Figure 8A–8B). Furthermore, the correlation analysis indicates that high LAMA3 expression is positively related with the number of CTC in the blood using IgG chips ($R=0.628$, $p=0.029$, Figure 8D) but not using EpCAM chips ($R=0.512$, $p=0.089$, Figure 8C). However, high LAMC2 expression was found to be statistically positively related with the number of CTC in the blood using both EpCAM ($R=0.707$, $p=0.006$, Figure 8E) and IgG chips ($R=0.776$, $p=0.003$, Figure 8F). Expression of LAMA3 and LAMC2 were found to be at low levels in whole blood cells of the GTEx healthy cohort (Supplementary Figure 2). There was no statistical difference between the expression of LAMA3 and LAMC2 from PDAC patients in peripheral mononuclear cells and whole blood cells compared with that of healthy controls (Supplementary Figure 4B–4C).

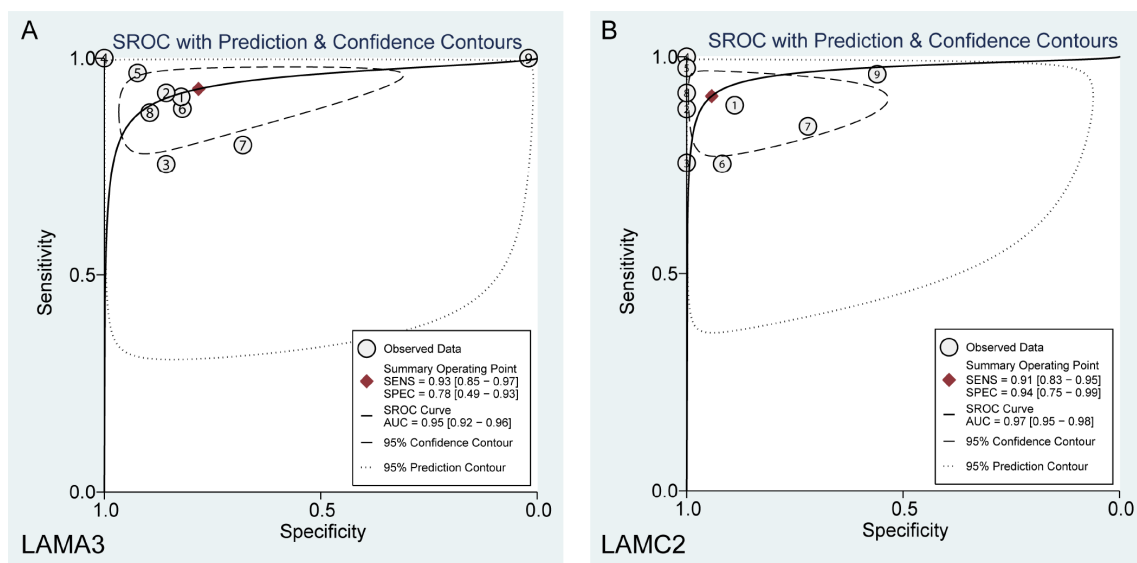


Figure 5. Summary ROC curve of (A) LAMA3 and (B) LAMC2 in GEO PDAC patients.

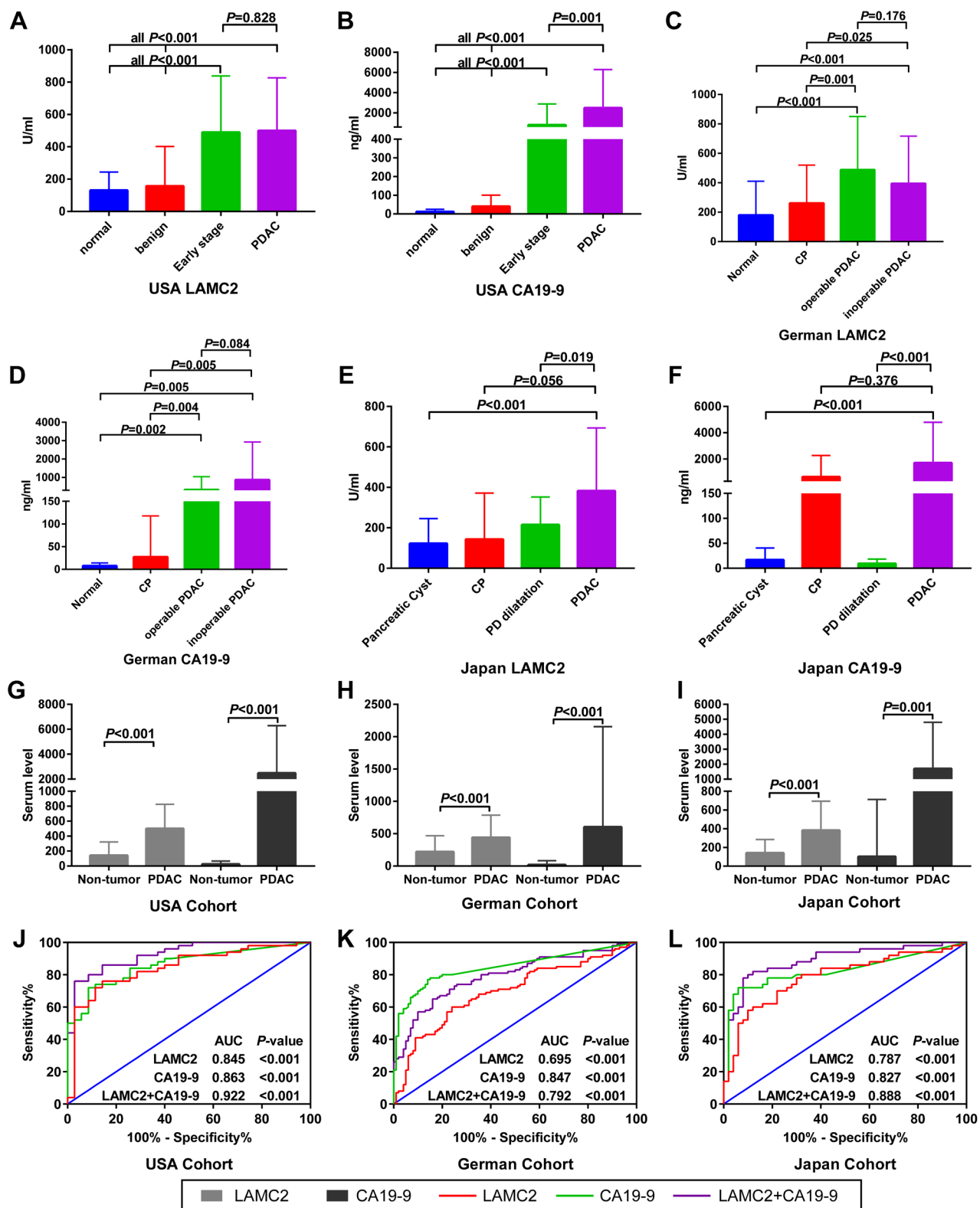


Figure 6. Serum levels and ROC analysis of LAMC2 and CA19-9 expression in PDAC and non-tumor patients. (A–F) Comparison of LAMC2 and CA19-9 serum levels in PDAC and non-tumor patients from the USA, German and Japan cohorts, respectively. (G–I) Comparison of LAMC2 and CA19-9 serum levels in PDAC and non-tumor patients combined from all cohorts. (J–L) ROC curve of LAMC2, CA19-9 and combined serum levels in distinguishing between PDAC and non-tumor tissues from USA, German and Japan cohorts, respectively. CP, Chronic pancreatitis; PD, Pancreatic duct.

DISCUSSION

In the present study, we initially screened out four differentially expressed subunits (LAMA3, LAMA4, LAMB3 and LAMC2) of the laminin gene family that were found to be associated with the clinical outcome of pancreas cancer patients in TCGA. Using external verification for GEO PDAC datasets, the two key subunits (LAMA3 and LAMC2) that were found to be

associated with the OS of PDAC patients were further analyzed. The expression of LAMA3 and LAMC2 was found to be upregulated in PDAC tumor tissues in the 9 datasets, with a favorable diagnostic ability for distinguishing between PDAC and non-tumor tissues. Additionally, high levels of LAMA3 and LAMC2 expression were found in PDAC CTCs and these expression levels were found to be positively related with CTC number in the blood of PDAC patients.

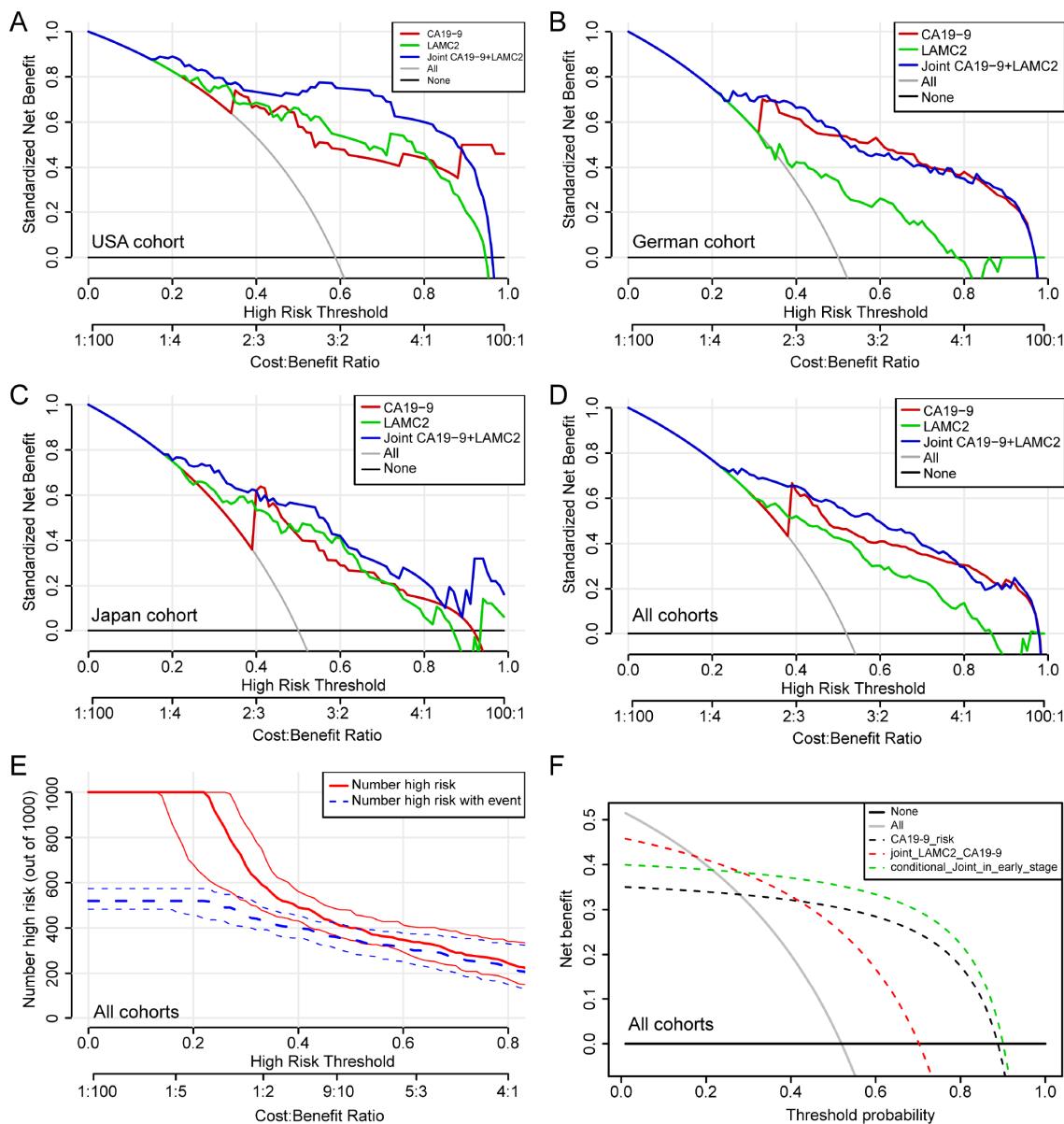


Figure 7. Decision curve analysis for the serum levels of LAMC2 and CA19-9 in PDAC patients. (A–D) Net benefit of LAMC2 and CA19-9 threshold probability from USA, German, Japan and combined cohorts, respectively. (E) Net benefit and Bootstrapping with PDAC high risk number resamples per 1000 patients of LAMC2 and CA19-9 threshold probability from the combined cohort. The red line indicates the number of people who are classified as positive (high risk) by the joint serum model under each threshold probability; the blue line (the number of high risk with event) is the number of true positives under each threshold probability. (F) Joint and conditional decision curve analysis of LAMC2 and CA19-9 threshold probability of all cohorts. The red dotted line represents the joint high serum levels of LAMC2 and CA19-9. The green dotted line represents joint high serum levels of LAMC2 and CA19-9 in early stage and operable PDAC patients.

Furthermore, we identified that serum LAMC2 levels present a high diagnostical ability and significant improvement over that of CA 19.9 alone for the discrimination of PDAC tissue from that of healthy controls and benign subjects. Using joint application of serum LAMC2 and CA19-9, it was found that the proportion of net benefit populations increased, particularly among early stage/operational PDAC patients.

LAMA3 and LAMC2 encode for products that are essential parts of laminin-322 (formerly known as laminin-5), which is known to stimulate cell migration in cancers [18, 19] and is related with the prognosis of diseases [20]. In this study, results of the enrichment

analysis and interaction networks indicate that laminin subunits are closely related with ITG. The ITG family of proteins are essential focal adhesion proteins that are found in various cancer cell types, and may affect the initiation, proliferation, survival and metastasis of tumors [21], and have been found to be correlated with the poor differentiation status and metastatic potential of PDAC [22]. The relationship between cell adhesion of laminins and ITGs in pancreatic carcinoma cells has been investigated. Rosewicz et al. found that retinoids decrease pancreatic carcinoma cell adhesion to the laminin via alteration of the integrin receptor function and thereby modulate infiltrative growth and metastasis of pancreatic cancer [23], but the specific mechanism needs to be identified.

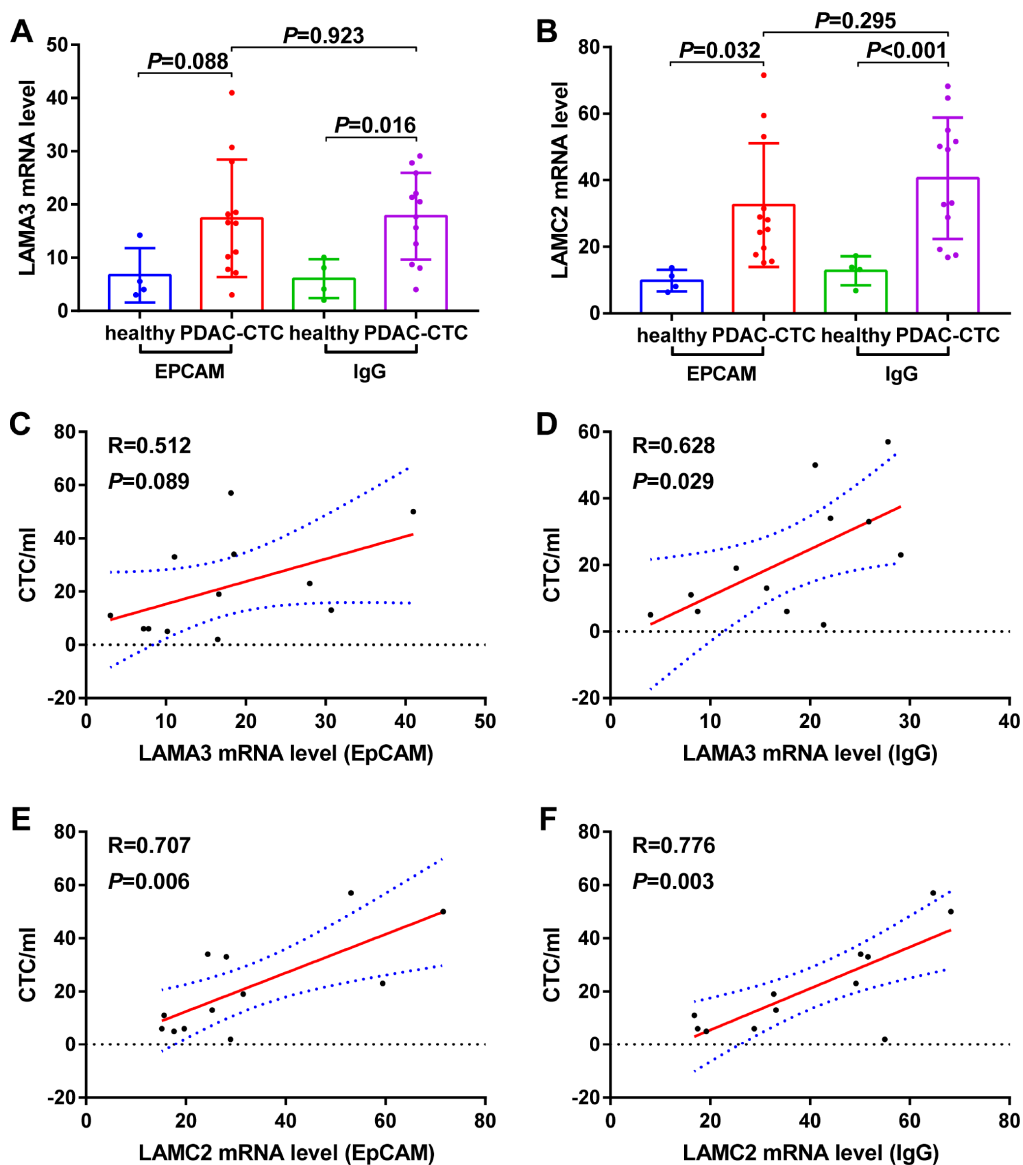


Figure 8. Expression levels of (A) LAMA3 and (B) LAMC2 in healthy donor and PDAC Circulating tumor cells (CTCs) and the relationship between (C–D) LAMA3 and (E–F) LAMC2 expression and CTC number in PDAC patients as processed using EpCAM and IgG CTC-Chip.

Our results demonstrate that the expression of LAMA3 and LAMC2 is related to the prognosis of PDAC, is highly elevated in CTCs and positively correlated with the number of CTCs in blood. Previous research [24] has indicated that LAMC2 fragment circulating levels are markedly elevated in PDAC patients with liver metastases, which is independent of basement membrane metabolism in the entire body. In addition, a study on gastric cancer [25] has suggested LAMB3 and LAMC2 chains accumulate intracellularly and are related with cancer progression, while epigenetic silencing of the LAMA3 chain may lead to an inability of synthesizing the basement membrane, which may affect cancer cell invasion. These results suggest that there may be some differences in the biological function of LAMA3 and LAMC2 regarding tumor progression.

In the expression level difference analysis, LAMA3 mRNA expression in PDAC non-tumor tissues in GSE102238 was lower when compared with tumor tissues from paired patients whose histopathology confirmed various extents of neurological invasion. However, LAMC2 expression was still elevated in PDAC tumor tissues. Mitsunaga *et al.* found that LAMC2 plays an important role in nerve invasion, with high LAMC2 mRNA and protein expression being associated with long nerve invasion [26]. Further, they studied the knockdown of LAMC2 in cancer cells, which was found to significantly shorten nerve invasion in an animal model. Our results indicate that LAMC2 expression in GSE102238 tumor tissues is higher than that of paracancer tissues of PDAC and patients who harbored high levels of LAMC2 expression had a poor prognosis. We hypothesize that high expression of LAMC2 promotes PDAC cell invasion of the nerve and leads to an increased risk of tumor recurrence.

LAMC2 is composed of epidermal growth factor (EGF)-like repeats that allow it to interact with EGFR (Epidermal Growth Factor Receptor). This binding stimulates downstream signaling that results in increased MMP-2 gene expression, which can enhance cell migration in breast carcinoma [27]. Another study identified signaling events coordinated by EGF and a specific ITG that regulates the invasive behavior of carcinoma cells. EGF stimulation of pancreatic carcinoma cells led to invasion and metastasis that was blocked by antagonists of ITG [28]. Additionally, the elevated expression of LAMC2 in cancer cells appears to drive tumorigenesis, through its interactions with several cell-surface receptors, including ITGs and EGFRs [29]. These results suggest that the interaction between laminins and ITGs may play a role in tumor invasion and metastasis of the EGF pathway, but the specific mechanism needs further verification.

An immunohistochemical study reported that the expression of LAMA3 and LAMC2 may serve an important role in identification of the progression and prognosis of PDAC patients [30]. According to immunohistochemical expression patterns, the basement membrane type of LAMC2 is correlated with differentiation and low risk for the prognosis of PDAC. The cytoplasmic expression of LAMC2 represents the high invasive potential of the tumor and is correlated with distant metastasis, especially hepatic metastasis, and with a poorer prognosis in patients with PDAC [31]. The above results indicate that the expression patterns of LAMC2 have different biological behaviors in tumor cells.

In PDAC tumor tissues, the expression of LAMA3 and LAMC2 are upregulated with a favorable ability of distinguishing between PDAC and non-tumor tissues, which is of a prognostic value for PDAC patients. However, histological analysis is an invasive examination that is not suitable for the early diagnosis of PDAC, in terms of safety. Therefore, serum mRNA detection can provide a good alternative method to assist clinicians with diagnosis. Considering some of the challenges encountered regarding the sensitivity and specificity of CA19-9 in diagnosis, Makawita *et al.* [32] investigated additional serum biomarkers that show promising results as improved diagnostic indicators of pancreatic cancer when combined with CA19-9. Kanda *et al.* reported that the preoperative index, which was obtained by multiplying the values of CA19-9 and carcinoembryonic antigen (CEA), had a strong correlation with the prognosis of patients with pancreatic cancer [33].

Moreover, our results illustrate that LAMA3 and LAMC2 expression levels are strong prognostic biomarkers that could help identify PDAC patients expected to have a poor prognosis, in order that they can be administered appropriate multidisciplinary treatment. Since the original study did not analyze differences in serum LAMC2 and CA19-9 levels and overall discrimination between groups in the included population [34], we further analyzed the diagnostic capabilities of LAMC2 and CA19-9 alone and jointly at serum level in all research cohorts using supplemental material. The results of a recent study validated the ability of the joint application of serum levels of LAMC2 and CA19-9 for discriminating PDAC patients from benign patients in the training and validation cohorts [35]. The decision curve analysis in our study also indicates that the proportion of net benefit populations increased in early stage/operational PDAC patients using joint serum LAMC2 and CA19-9 levels. The cost-effectiveness ratio decreased in joint serum LAMC2 and CA19-9. Further, the researchers identified

a biomarker panel consisting of CA19-9, CA125 and LAMC2, which was found to be better at detecting PDAC patients than CA19-9 alone, most notably during the early stages of the disease [35]. Based on these research results, the joint analysis was found to have certain advantages compared with the single factor analysis. The expression levels of laminin subunits did not rise in PDAC patients, compared with that of peripheral mononuclear cells and whole blood cells of healthy controls. Regrettably, levels of other serological laminins were not obtained in this study due to data relevance, and therefore the combined value of LAMA3 serum levels and that of CA19-9 could not be analyzed. The relationship among the level of serological laminins, CTCs in the blood, expression in tumor tissues and prognosis of PDAC patients need further research. Real-world clinical applications should be further validated based on multicenter early stage PDAC samples.

For clinical translational medicine, we obtained the diagnostic and prognostic value of genes in the laminin family for pancreatic cancer, which can serve the following clinical applications: 1) Detection of laminin gene family expression levels in tumor tissue to assist in distinguishing pancreatic cancer types and assessing the risk of metastatic recurrence; 2). Detection of laminin serological levels to improve the diagnostic ability of CA199 in pancreatic cancer and to estimate the number of circulating tumor cells to assess the risk of metastasis.

In summary, we screened two overexpressed key laminin subunits (LAMA3 and LAMC2) that facilitate the occurrence and progression of PDAC. The serum level of LAMC2 offers significant improvement over CA19-9 alone for the discrimination of PDAC tissue from that of healthy controls and benign subjects. Joint serum LAMC2 and CA19-9 levels can increase the net benefit proportion of early stage/operational PDAC patients. These findings provide a new perspective on the underlying molecular mechanism of laminin subunits in PDAC, suggesting that key laminin subunits may be valuable biomarkers and therapeutic targets for PDAC patients.

MATERIALS AND METHODS

This study was approved by the Ethics Committee of the First Affiliated Hospital of Guangxi Medical University (Guangxi, China).

Profiling of laminin gene family in TCGA and GTEx tissues

GEPIA (<http://gepia.cancer-pku.cn/>) [36] is a data visualization website for analyzing RNA-Seq

expression data from TCGA and GTEx projects. The comparison of the expression of genes of the laminin gene family in PAAD and non-tumor tissues was performed using GEPIA. Then, the expression of genes of the laminin family were also analyzed in various tumor and non-tumor tissues using GEPIA. Profiling of the laminin gene family in normal tissues was visualized and data were extracted from the GTEx portal (<https://www.gtexportal.org/>).

Bioinformatics analysis of genes of the laminin family

In order to investigate the biological functions and pathways of the genes of the laminin family, the *ClusterProfiler* [37] R package was used to perform KEGG pathway and GO term enrichment analyses. The gene-gene and protein-protein interaction networks of genes of the laminin family were explored using GeneMANIA (<http://www.genemania.org/>) [38] and STRING (<https://string-db.org/>) [39, 40], respectively.

Prognostic value of genes of the laminin family in PDAC patients

The association between genes of the laminin family and the clinical outcome of PAAD patients was analyzed using GEPIA. In order to validate the relationship between genes of the laminin family and the clinical outcome of PDAC patients, we looked for datasets containing data of histopathologically confirmed PDAC patients with complete clinical outcome data in GEO (<http://www.ncbi.nlm.nih.gov/geo>). Then, the GSE21501 [41] PDAC dataset was included in this study but cases with incomplete prognostic information were excluded. The median expression level was set as cutoff value for categorizing patients into high and low expression groups. In order to evaluate the predictive accuracy of genes of the laminin family for the clinical outcome of PDAC patients, the *survivalROC* [42] R package was performed to construct a time-dependent ROC curve.

Profiling of genes of the laminin family in GEO PDAC datasets

The validation of the expression level of genes of the laminin family in PDAC tumor tissues was further explored in GEO. The inclusion criteria were as follows: (i) expression data on genes of the laminin family available; (ii) total sample size of each dataset in tumor and non-tumor groups exceeds 30; (iii) human subjects; and (iv) tumor histopathologically confirmed as PDAC. As a result, a total of 9 datasets were further analyzed, which included GSE28735 [43, 44], GSE32676 [45], GSE55643 [46], GSE56560 [47, 48], GSE62165 [49], GSE62452 [50], GSE91035,

GSE101448 [51] and GSE102238. Moreover, in order to investigate the expression of genes of the laminin family between PDAC blood cells, CTCs and healthy control blood cells, 4 datasets, GSE40171 [52], GSE49641 [53], GSE60601 and GSE76429, were included and supplementary data were collected.

Serum levels of LAMC2 and CA19-9 in PDAC patients

By searching for supplementary data from published studies, we obtained serum data of LAMC2 and CA19-9 levels of three cohorts (USA, German and Japan) from a study conducted by Doctor Hari Kosanam from the University of Toronto [34]. Serum levels of LAMC2 and CA19-9 were detected using Enzyme-linked immunosorbent assays (purchased from USCN Life Sciences), according to the manufacturer's protocols. Serum LAMC2 and CA19-9 levels between groups and the ability of joint serum levels in discriminating PDAC from non-tumor controls were further investigated. According to the original research reported [34], the cutoff values for LAMC2 and CA19-9 were set to 150 U/ml and 37 ng/ml, respectively. In order to evaluate the net benefit proportion, decision curve analysis [54] were constructed for serum LAMC2, CA19-9 and joint levels in different PDAC cohorts or stages. The decision curve, a graphical summary for assessing the potential clinical impact of risk prediction biomarkers or risk models for recommending treatment or intervention, allows one to examine a risk model performance across a range of plausible risk thresholds [55]. Equivalently, the decision curves allow for examination of risk models across a range of plausible cost-benefit ratios [56].

Statistical analysis

All statistical analyses were performed using SPSS version 24.0 (IBM Corp., Chicago, IL, USA) and STATA version 13.0 (Stata Corp., College Station, TX, USA). A two-sided *p* value of <0.05 was considered to be statistically significant. Continuous variables with a normal distribution are presented as mean and standard deviation (SD) and the mean of two continuous normally distributed variables are compared using the independent samples Student's test. The survival curves and heatmaps were constructed using GraphPad Prism 7.01 (GraphPad Software, Inc., San Diego, CA, USA). The Kaplan-Meier survival curves were compared using the log-rank test. Enrichment plot, time-dependent ROC curve and decision curve analysis were performed in R 3.4.1 (<http://www.R-project.org/>). The ROC curve was drawn to identify the diagnostic significance of the laminin gene family in the GEO dataset. The AUC value for assessing the predictive accuracy and discriminative ability of ROC were calculated using

SPSS 24.0. A SROC curve and the AUC value of SROC were calculated using STATA 13.0. The relationship between laminin genes and CTC number was assessed using the Pearson's correlation coefficient.

ACKNOWLEDGMENTS

We wish to thank the TCGA group, GEO database and Doctor Hari Kosanam for providing relevant data that is publicly accessible.

CONFLICTS OF INTEREST

The authors report no conflicts of interest in this work.

FUNDING

This work was supported in part by the National Natural Science Foundation of China (No.: 81560535, 81802874, 81072321, 30760243, 30460143 and 30560133), Natural Science Foundation of Guangxi Province of China (Grant No.2017JJB140189y), 2009 Program for New Century Excellent Talents in University (NCET), Guangxi Natural Sciences Foundation (No.: GuiKeGong 1104003A-7), and Guangxi Health Ministry Medicine Grant (Key-Scientific Research-Grant Z201018). The present study is also partly supported by Scientific Research Fund of the Health and Family Planning Commission of Guangxi Zhuang Autonomous Region (Z2016318), Key laboratory of High-Incidence-Tumor Prevention & Treatment (Guangxi Medical University), Ministry of Education (GKE2018-01), The Basic Ability Improvement Project for Middle-aged and Young Teachers in Colleges and Universities in Guangxi (2018KY0110), Guangxi Key Laboratory for the Prevention and Control of Viral Hepatitis (No.GXCDCKL201902), 2018 Innovation Project of Guangxi Graduate Education (JGY2018037), and 2018 Innovation Project of Guangxi Graduate Education (YCBZ2018036). As well as, the present study is also partly supported by Research Institute of Innovative Think-tank in Guangxi Medical University (The gene-environment interaction in hepatocarcinogenesis in Guangxi HCCs and its translational applications in the HCC prevention). We would also acknowledge the supported by the National Key Clinical Specialty Programs (General Surgery & Oncology) and the Key Laboratory of Early Prevention & Treatment for Regional High-Incidence-Tumor (Guangxi Medical University), Ministry of Education, China.

REFERENCES

1. Siegel RL, Miller KD, Jemal A. Cancer statistics, 2017. *CA Cancer J Clin.* 2017; 67:7–30.

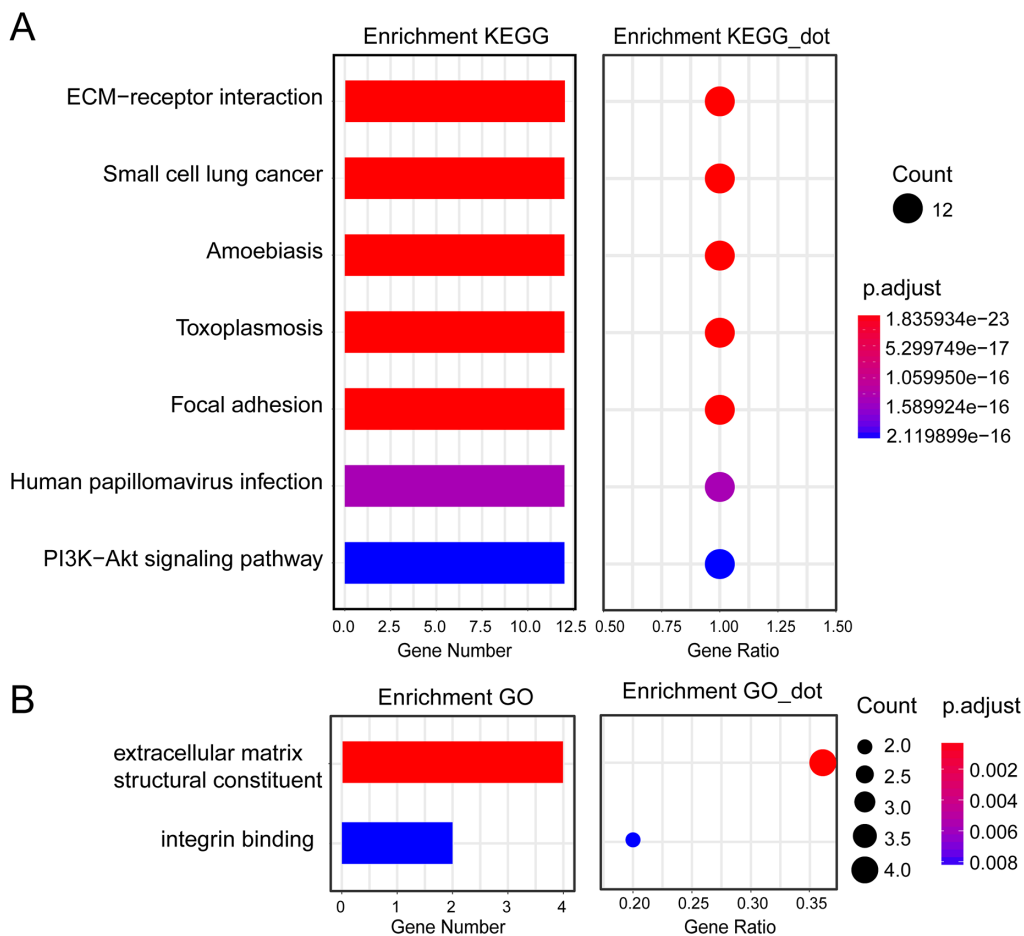
- <https://doi.org/10.3322/caac.21387>
PMID:28055103
2. Ferlay J, Soerjomataram I, Dikshit R, Eser S, Mathers C, Rebelo M, Parkin DM, Forman D, Bray F. Cancer incidence and mortality worldwide: sources, methods and major patterns in GLOBOCAN 2012. *Int J Cancer*. 2015; 136:E359–86.
<https://doi.org/10.1002/ijc.29210>
PMID:25220842
 3. DeSantis CE, Lin CC, Mariotto AB, Siegel RL, Stein KD, Kramer JL, Alteri R, Robbins AS, Jemal A. Cancer treatment and survivorship statistics, 2014. *CA Cancer J Clin*. 2014; 64:252–71.
<https://doi.org/10.3322/caac.21235> PMID:24890451
 4. Tanaka S. Molecular Pathogenesis and Targeted Therapy of Pancreatic Cancer. *Ann Surg Oncol*. 2016 (Suppl 2); 23:S197–205.
<https://doi.org/10.1245/s10434-015-4463-x>
PMID:25749932
 5. Locker GY, Hamilton S, Harris J, Jessup JM, Kemeny N, Macdonald JS, Somerfield MR, Hayes DF, Bast RC Jr, and ASCO. ASCO 2006 update of recommendations for the use of tumor markers in gastrointestinal cancer. *J Clin Oncol*. 2006; 24:5313–27.
<https://doi.org/10.1200/JCO.2006.08.2644>
PMID:17060676
 6. Molina V, Visa L, Conill C, Navarro S, Escudero JM, Auge JM, Filella X, Lopez-Boado MA, Ferrer J, Fernandez-Cruz L, Molina R. CA19-9 in pancreatic cancer: retrospective evaluation of patients with suspicion of pancreatic cancer. *Tumour Biol*. 2012; 33:799–807.
<https://doi.org/10.1007/s13277-011-0297-8>
PMID:22203495
 7. Goonetilleke KS, Siriwardena AK. Systematic review of carbohydrate antigen (CA19-9) as a biochemical marker in the diagnosis of pancreatic cancer. *Eur J Surg Oncol*. 2007; 33:266–70.
<https://doi.org/10.1016/j.ejso.2006.10.004>
PMID:17097848
 8. Duffy MJ, Sturgeon C, Lamerz R, Haglund C, Holubec VL, Klapdor R, Nicolini A, Topolcan O, Heinemann V. Tumor markers in pancreatic cancer: a European Group on Tumor Markers (EGTM) status report. *Ann Oncol*. 2010; 21:441–47.
<https://doi.org/10.1093/annonc/mdp332>
PMID:19690057
 9. Datta J, Vollmer CM Jr. Investigational biomarkers for pancreatic adenocarcinoma: where do we stand? *South Med J*. 2014; 107:256–63.
<https://doi.org/10.1097/SMJ.0000000000000088>
PMID:24937521
 10. Malinda KM, Kleinman HK. The laminins. *Int J Biochem Cell Biol*. 1996; 28:957–59.
[https://doi.org/10.1016/1357-2725\(96\)00042-8](https://doi.org/10.1016/1357-2725(96)00042-8)
PMID:8930117
 11. Miner JH, Yurchenco PD. Laminin functions in tissue morphogenesis. *Annu Rev Cell Dev Biol*. 2004; 20:255–84.
<https://doi.org/10.1146/annurev.cellbio.20.010403.094555> PMID:15473841
 12. Aumailley M, Bruckner-Tuderman L, Carter WG, Deutzmann R, Edgar D, Ekblom P, Engel J, Engvall E, Hohenester E, Jones JC, Kleinman HK, Marinkovich MP, Martin GR, et al. A simplified laminin nomenclature. *Matrix Biol*. 2005; 24:326–32.
<https://doi.org/10.1016/j.matbio.2005.05.006>
PMID:15979864
 13. Bizama C, Benavente F, Salvatierra E, Gutiérrez-Moraga A, Espinoza JA, Fernández EA, Roa I, Mazzolini G, Sagredo EA, Gidekel M, Podhajcer OL. The low-abundance transcriptome reveals novel biomarkers, specific intracellular pathways and targetable genes associated with advanced gastric cancer. *Int J Cancer*. 2014; 134:755–64.
<https://doi.org/10.1002/ijc.28405> PMID:23907728
 14. Jhunjhunwala S, Jiang Z, Stawiski EW, Gnad F, Liu J, Mayba O, Du P, Diao J, Johnson S, Wong KF, Gao Z, Li Y, Wu TD, et al. Diverse modes of genomic alteration in hepatocellular carcinoma. *Genome Biol*. 2014; 15:436.
<https://doi.org/10.1186/s13059-014-0436-9>
PMID:25159915
 15. Wragg JW, Ffinity JP, Anderson JA, Ferguson HJ, Porfiri E, Bhatt RI, Murray PG, Heath VL, Bicknell R. MCAM and LAMA4 are highly enriched in tumor blood vessels of renal cell carcinoma and predict patient outcome. *Cancer Res*. 2016; 76:2314–26.
<https://doi.org/10.1158/0008-5472.CAN-15-1364>
PMID:26921326
 16. Bartolini A, Cardaci S, Lamba S, Oddo D, Marchiò C, Cassoni P, Amoreo CA, Corti G, Testori A, Bussolino F, Pasqualini R, Arap W, Corà D, et al. BCAM and LAMA5 Mediate the Recognition between Tumor Cells and the Endothelium in the Metastatic Spreading of KRAS-Mutant Colorectal Cancer. *Clin Cancer Res*. 2016; 22:4923–33.
<https://doi.org/10.1158/1078-0432.CCR-15-2664>
PMID:27143691
 17. Sathyanarayana UG, Toyooka S, Padar A, Takahashi T, Brambilla E, Minna JD, Gazdar AF. Epigenetic inactivation of laminin-5-encoding genes in lung cancers. *Clin Cancer Res*. 2003; 9:2665–72.
PMID:12855645

18. Carpenter PM, Sivadas P, Hua SS, Xiao C, Gutierrez AB, Ngo T, Gershon PD. Migration of breast cancer cell lines in response to pulmonary laminin 332. *Cancer Med.* 2017; 6:220–34.
<https://doi.org/10.1002/cam4.957>
PMID:27878981
19. Oh KH, Choi J, Woo JS, Baek SK, Jung KY, Koh MJ, Kim YS, Kwon SY. Role of laminin 332 in lymph node metastasis of papillary thyroid carcinoma. *Auris Nasus Larynx.* 2017; 44:729–34.
<https://doi.org/10.1016/j.anl.2017.01.010>
PMID:28238469
20. Tripathi M, Nandana S, Yamashita H, Ganesan R, Kirchhofer D, Quaranta V. Laminin-332 is a substrate for hepsin, a protease associated with prostate cancer progression. *J Biol Chem.* 2008; 283:30576–84.
<https://doi.org/10.1074/jbc.M802312200>
PMID:18784072
21. Pan B, Guo J, Liao Q, Zhao Y. $\beta 1$ and $\beta 3$ integrins in breast, prostate and pancreatic cancer: A novel implication. *Oncol Lett.* 2018; 15:5412–16.
<https://doi.org/10.3892/ol.2018.8076>
PMID:29556293
22. Li NF, Gemenetzidis E, Marshall FJ, Davies D, Yu Y, Frese K, Froeling FE, Woolf AK, Feakins RM, Naito Y, Iacobuzio-Donahue C, Tuveson DA, Hart IR, Kocher HM. RhoC interacts with integrin $\alpha 5\beta 1$ and enhances its trafficking in migrating pancreatic carcinoma cells. *PLoS One.* 2013; 8:e81575.
<https://doi.org/10.1371/journal.pone.0081575>
PMID:24312560
23. Rosewicz S, Wollbergs K, Von Lampe B, Matthes H, Kaiser A, Riecken EO. Retinoids inhibit adhesion to laminin in human pancreatic carcinoma cells via the alpha 6 beta 1-integrin receptor. *Gastroenterology.* 1997; 112:532–42.
<https://doi.org/10.1053/gast.1997.v112.pm9024307>
PMID:9024307
24. Katayama M, Funakoshi A, Sumii T, Sanzen N, Sekiguchi K. Laminin $\gamma 2$ -chain fragment circulating level increases in patients with metastatic pancreatic ductal cell adenocarcinomas. *Cancer Lett.* 2005; 225:167–76.
<https://doi.org/10.1016/j.canlet.2004.11.052>
PMID:15922869
25. li M, Yamamoto H, Taniguchi H, Adachi Y, Nakazawa M, Ohashi H, Tanuma T, Sukawa Y, Suzuki H, Sasaki S, Imai K, Shinomura Y. Co-expression of laminin $\beta 3$ and $\gamma 2$ chains and epigenetic inactivation of laminin $\alpha 3$ chain in gastric cancer. *Int J Oncol.* 2011; 39:593–99.
<https://doi.org/10.3892/ijo.2011.1048>
PMID:21617852
26. Mitsunaga S, Fujii S, Ishii G, Kinoshita T, Hasebe T, Aoyagi K, Sasaki H, Ochiai A. Nerve invasion distance is dependent on laminin $\gamma 2$ in tumors of pancreatic cancer. *Int J Cancer.* 2010; 127:805–19.
<https://doi.org/10.1002/ijc.25104> PMID:20013810
27. Schenk S, Hintermann E, Bilban M, Koshikawa N, Hojilla C, Khokha R, Quaranta V. Binding to EGF receptor of a laminin-5 EGF-like fragment liberated during MMP-dependent mammary gland involution. *J Cell Biol.* 2003; 161:197–209.
<https://doi.org/10.1083/jcb.200208145>
PMID:12695504
28. Ricono JM, Huang M, Barnes LA, Lau SK, Weis SM, Schlaepfer DD, Hanks SK, Cheresch DA. Specific cross-talk between epidermal growth factor receptor and integrin $\alpha v\beta 5$ promotes carcinoma cell invasion and metastasis. *Cancer Res.* 2009; 69:1383–91.
<https://doi.org/10.1158/0008-5472.CAN-08-3612>
PMID:19208836
29. Garg M, Braunstein G, Koeffler HP. LAMC2 as a therapeutic target for cancers. *Expert Opin Ther Targets.* 2014; 18:979–82.
<https://doi.org/10.1517/14728222.2014.934814>
PMID:24976367
30. Chen J, Zhang H, Luo J, Wu X, Li X, Zhao X, Zhou D, Yu S. Overexpression of $\alpha 3$, $\beta 3$ and $\gamma 2$ chains of laminin-332 is associated with poor prognosis in pancreatic ductal adenocarcinoma. *Oncol Lett.* 2018; 16:199–210.
<https://doi.org/10.3892/ol.2018.8678>
PMID:29928402
31. Takahashi S, Hasebe T, Oda T, Sasaki S, Kinoshita T, Konishi M, Ochiai T, Ochiai A. Cytoplasmic expression of laminin $\gamma 2$ chain correlates with postoperative hepatic metastasis and poor prognosis in patients with pancreatic ductal adenocarcinoma. *Cancer.* 2002; 94:1894–901.
<https://doi.org/10.1002/cncr.10395> PMID:11920553
32. Makawita S, Dimitromanolakis A, Soosaipillai A, Soleas I, Chan A, Gallinger S, Haun RS, Blasutig IM, Diamandis EP. Validation of four candidate pancreatic cancer serological biomarkers that improve the performance of CA19.9. *BMC Cancer.* 2013; 13:404.
<https://doi.org/10.1186/1471-2407-13-404>
PMID:24007603
33. Kanda M, Fujii T, Takami H, Suenaga M, Inokawa Y, Yamada S, Nakayama G, Sugimoto H, Koike M, Nomoto S, Kodera Y. Combination of the serum carbohydrate antigen 19-9 and carcinoembryonic antigen is a simple and accurate predictor of mortality in pancreatic cancer patients. *Surg Today.* 2014; 44:1692–701.

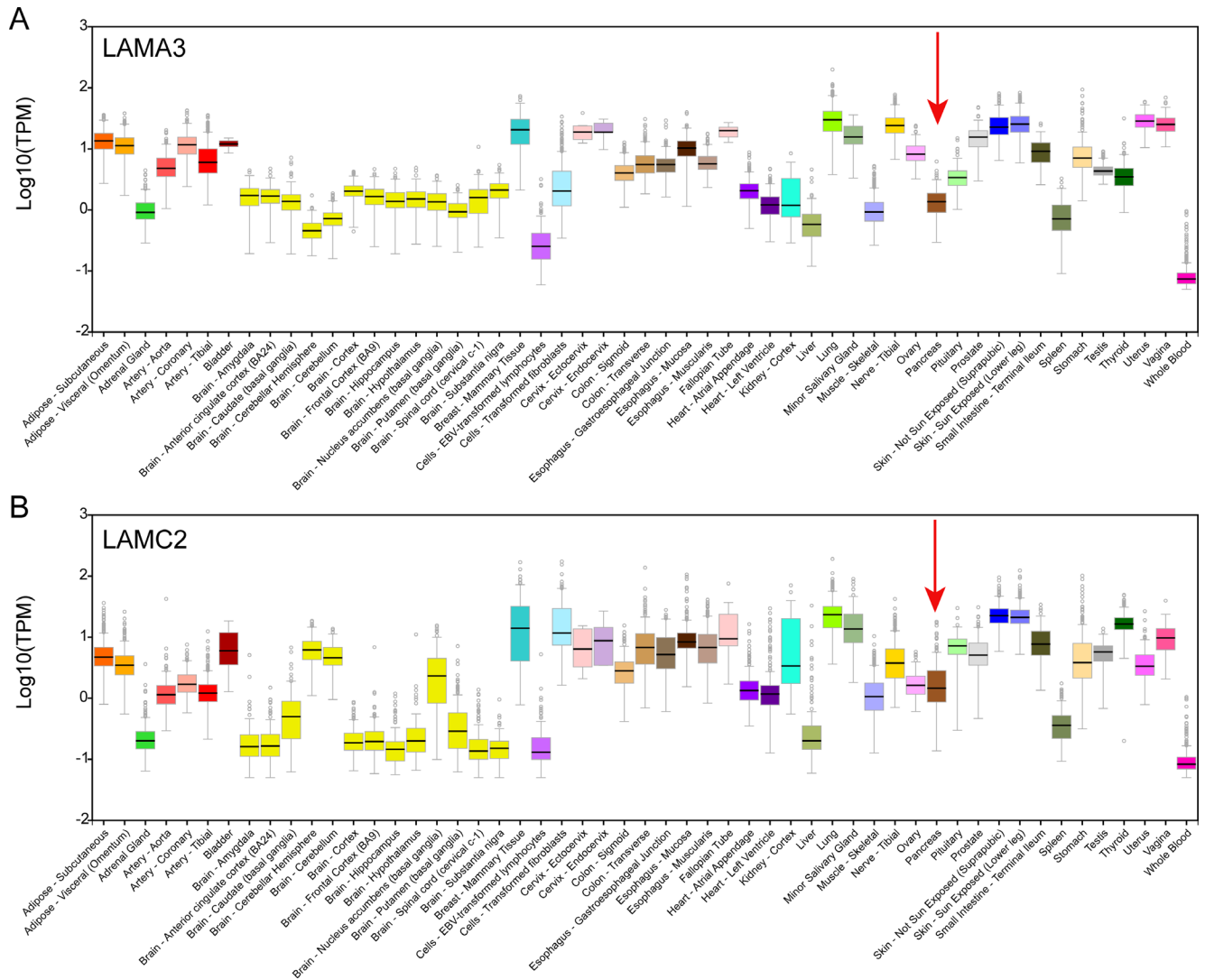
- <https://doi.org/10.1007/s00595-013-0752-9>
PMID:24114022
34. Kosanam H, Prassas I, Chrystoja CC, Soleas I, Chan A, Dimitromanolakis A, Blasutig IM, Rückert F, Gruetzmann R, Pilarsky C, Maekawa M, Brand R, Diamandis EP. Laminin, gamma 2 (LAMC2): a promising new putative pancreatic cancer biomarker identified by proteomic analysis of pancreatic adenocarcinoma tissues. *Mol Cell Proteomics*. 2013; 12:2820–32.
<https://doi.org/10.1074/mcp.M112.023507>
PMID:23798558
35. Chan A, Prassas I, Dimitromanolakis A, Brand RE, Serra S, Diamandis EP, Blasutig IM. Validation of biomarkers that complement CA19.9 in detecting early pancreatic cancer. *Clin Cancer Res*. 2014; 20:5787–95.
<https://doi.org/10.1158/1078-0432.CCR-14-0289>
PMID:25239611
36. Tang Z, Li C, Kang B, Gao G, Li C, Zhang Z. GEPIA: a web server for cancer and normal gene expression profiling and interactive analyses. *Nucleic Acids Res*. 2017; 45:W98–102.
<https://doi.org/10.1093/nar/gkx247> PMID:28407145
37. Yu G, Wang LG, Han Y, He QY. clusterProfiler: an R package for comparing biological themes among gene clusters. *OMICS*. 2012; 16:284–87.
<https://doi.org/10.1089/omi.2011.0118>
PMID:22455463
38. Warde-Farley D, Donaldson SL, Comes O, Zuberi K, Badrawi R, Chao P, Franz M, Grouios C, Kazi F, Lopes CT, Maitland A, Mostafavi S, Montojo J, et al. The GeneMANIA prediction server: biological network integration for gene prioritization and predicting gene function. *Nucleic Acids Res*. 2010 (suppl_2); 38:W214–20.
<https://doi.org/10.1093/nar/gkq537> PMID:20576703
39. von Mering C, Huynen M, Jaeggi D, Schmidt S, Bork P, Snel B. STRING: a database of predicted functional associations between proteins. *Nucleic Acids Res*. 2003; 31:258–61.
<https://doi.org/10.1093/nar/gkg034> PMID:12519996
40. Szklarczyk D, Morris JH, Cook H, Kuhn M, Wyder S, Simonovic M, Santos A, Doncheva NT, Roth A, Bork P, Jensen LJ, von Mering C. The STRING database in 2017: quality-controlled protein-protein association networks, made broadly accessible. *Nucleic Acids Res*. 2017; 45:D362–68.
<https://doi.org/10.1093/nar/gkw937> PMID:27924014
41. Stratford JK, Bentrem DJ, Anderson JM, Fan C, Volmar KA, Marron JS, Routh ED, Caskey LS, Samuel JC, Der CJ, Thorne LB, Calvo BF, Kim HJ, et al. A six-gene signature predicts survival of patients with localized pancreatic ductal adenocarcinoma. *PLoS Med*. 2010; 7:e1000307.
<https://doi.org/10.1371/journal.pmed.1000307>
PMID:20644708
42. Heagerty PJ, Zheng Y. Survival model predictive accuracy and ROC curves. *Biometrics*. 2005; 61:92–105.
<https://doi.org/10.1111/j.0006-341X.2005.030814.x>
PMID:15737082
43. Zhang G, Schetter A, He P, Funamizu N, Gaedcke J, Ghadimi BM, Ried T, Hassan R, Yfantis HG, Lee DH, Lacy C, Maitra A, Hanna N, et al. DPEP1 inhibits tumor cell invasiveness, enhances chemosensitivity and predicts clinical outcome in pancreatic ductal adenocarcinoma. *PLoS One*. 2012; 7:e31507.
<https://doi.org/10.1371/journal.pone.0031507>
PMID:22363658
44. Zhang G, He P, Tan H, Budhu A, Gaedcke J, Ghadimi BM, Ried T, Yfantis HG, Lee DH, Maitra A, Hanna N, Alexander HR, Hussain SP. Integration of metabolomics and transcriptomics revealed a fatty acid network exerting growth inhibitory effects in human pancreatic cancer. *Clin Cancer Res*. 2013; 19:4983–93.
<https://doi.org/10.1158/1078-0432.CCR-13-0209>
PMID:23918603
45. Donahue TR, Tran LM, Hill R, Li Y, Kovochich A, Calvopina JH, Patel SG, Wu N, Hindoyan A, Farrell JJ, Li X, Dawson DW, Wu H. Integrative survival-based molecular profiling of human pancreatic cancer. *Clin Cancer Res*. 2012; 18:1352–63.
<https://doi.org/10.1158/1078-0432.CCR-11-1539>
PMID:22261810
46. Lunardi S, Jamieson NB, Lim SY, Griffiths KL, Carvalho-Gaspar M, Al-Assar O, Yameen S, Carter RC, McKay CJ, Spoletini G, D’Ugo S, Silva MA, Sansom OJ, et al. IP-10/CXCL10 induction in human pancreatic cancer stroma influences lymphocytes recruitment and correlates with poor survival. *Oncotarget*. 2014; 5:11064–80.
<https://doi.org/10.18632/oncotarget.2519>
PMID:25415223
47. Haider S, Wang J, Nagano A, Desai A, Arumugam P, Dumartin L, Fitzgibbon J, Hagemann T, Marshall JF, Kocher HM, Crnogorac-Jurcevic T, Scarpa A, Lemoine NR, Chelala C. A multi-gene signature predicts outcome in patients with pancreatic ductal adenocarcinoma. *Genome Med*. 2014; 6:105.
<https://doi.org/10.1186/s13073-014-0105-3>
PMID:25587357
48. Wang J, Dumartin L, Mafficini A, Ulug P, Sangaralingam A, Alamiry NA, Radon TP, Salvia R, Lawlor RT, Lemoine

- NR, Scarpa A, Chelala C, Crnogorac-Jurcevic T. Splice variants as novel targets in pancreatic ductal adenocarcinoma. *Sci Rep*. 2017; 7:2980.
<https://doi.org/10.1038/s41598-017-03354-z>
PMID:28592875
49. Janky R, Binda MM, Allemeersch J, Van den Broeck A, Govaere O, Swinnen JV, Roskams T, Aerts S, Topal B. Prognostic relevance of molecular subtypes and master regulators in pancreatic ductal adenocarcinoma. *BMC Cancer*. 2016; 16:632.
<https://doi.org/10.1186/s12885-016-2540-6>
PMID:27520560
50. Yang S, He P, Wang J, Schetter A, Tang W, Funamizu N, Yanaga K, Uwagawa T, Satoskar AR, Gaedcke J, Bernhardt M, Ghadimi BM, Gaida MM, et al. A novel MIF signaling pathway drives the malignant character of pancreatic cancer by targeting NR3C2. *Cancer Res*. 2016; 76:3838–50.
<https://doi.org/10.1158/0008-5472.CAN-15-2841>
PMID:27197190
51. Klett H, Fuellgraf H, Levit-Zerdoun E, Hussung S, Kowar S, Küsters S, Bronsert P, Werner M, Wittel U, Fritsch R, Busch H, Boerries M. Identification and Validation of a Diagnostic and Prognostic Multi-Gene Biomarker Panel for Pancreatic Ductal Adenocarcinoma. *Front Genet*. 2018; 9:108.
<https://doi.org/10.3389/fgene.2018.00108>
PMID:29675033
52. Yu M, Ting DT, Stott SL, Wittner BS, Oszolak F, Paul S, Ciciliano JC, Smas ME, Winokur D, Gilman AJ, Ulman MJ, Xega K, Contino G, et al. RNA sequencing of pancreatic circulating tumour cells implicates WNT signalling in metastasis. *Nature*. 2012; 487:510–13.
<https://doi.org/10.1038/nature11217>
PMID:22763454
53. Caba O, Prados J, Ortiz R, Jiménez-Luna C, Melguizo C, Alvarez PJ, Delgado JR, Irigoyen A, Rojas I, Pérez-Florido J, Torres C, Perales S, Linares A, Aránega A. Transcriptional profiling of peripheral blood in pancreatic adenocarcinoma patients identifies diagnostic biomarkers. *Dig Dis Sci*. 2014; 59:2714–20.
<https://doi.org/10.1007/s10620-014-3291-3>
PMID:25069573
54. Vickers AJ, Elkin EB. Decision curve analysis: a novel method for evaluating prediction models. *Med Decis Making*. 2006; 26:565–74.
<https://doi.org/10.1177/0272989X06295361>
PMID:17099194
55. Kerr KF, Brown MD, Zhu K, Janes H. Assessing the Clinical Impact of Risk Prediction Models With Decision Curves: Guidance for Correct Interpretation and Appropriate Use. *J Clin Oncol*. 2016; 34:2534–40.
<https://doi.org/10.1200/JCO.2015.65.5654>
PMID:27247223
56. Vickers AJ, Van Calster B, Steyerberg EW. Net benefit approaches to the evaluation of prediction models, molecular markers, and diagnostic tests. *BMJ*. 2016; 352:i6.
<https://doi.org/10.1136/bmj.i6> PMID:26810254

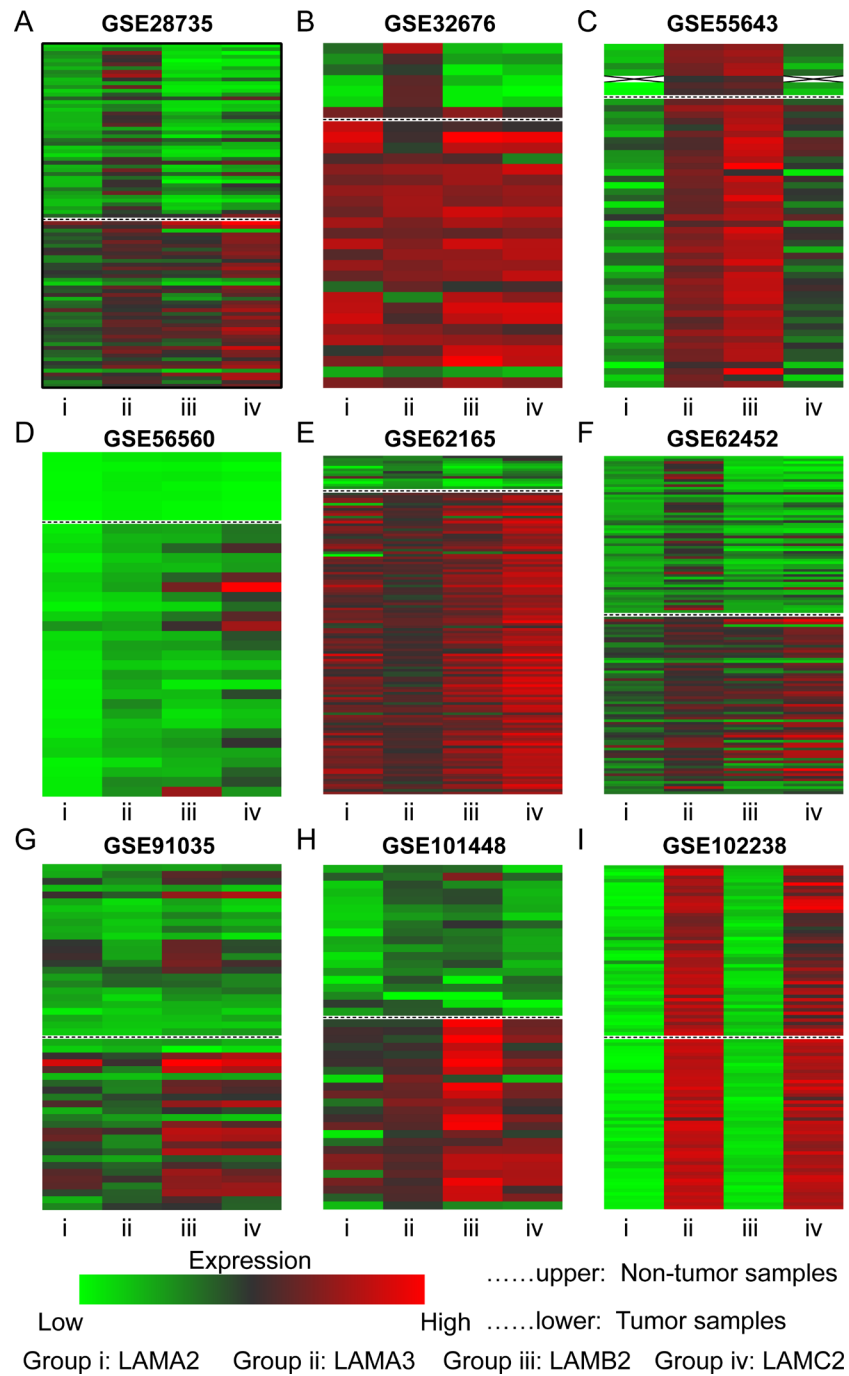
Supplementary Figures



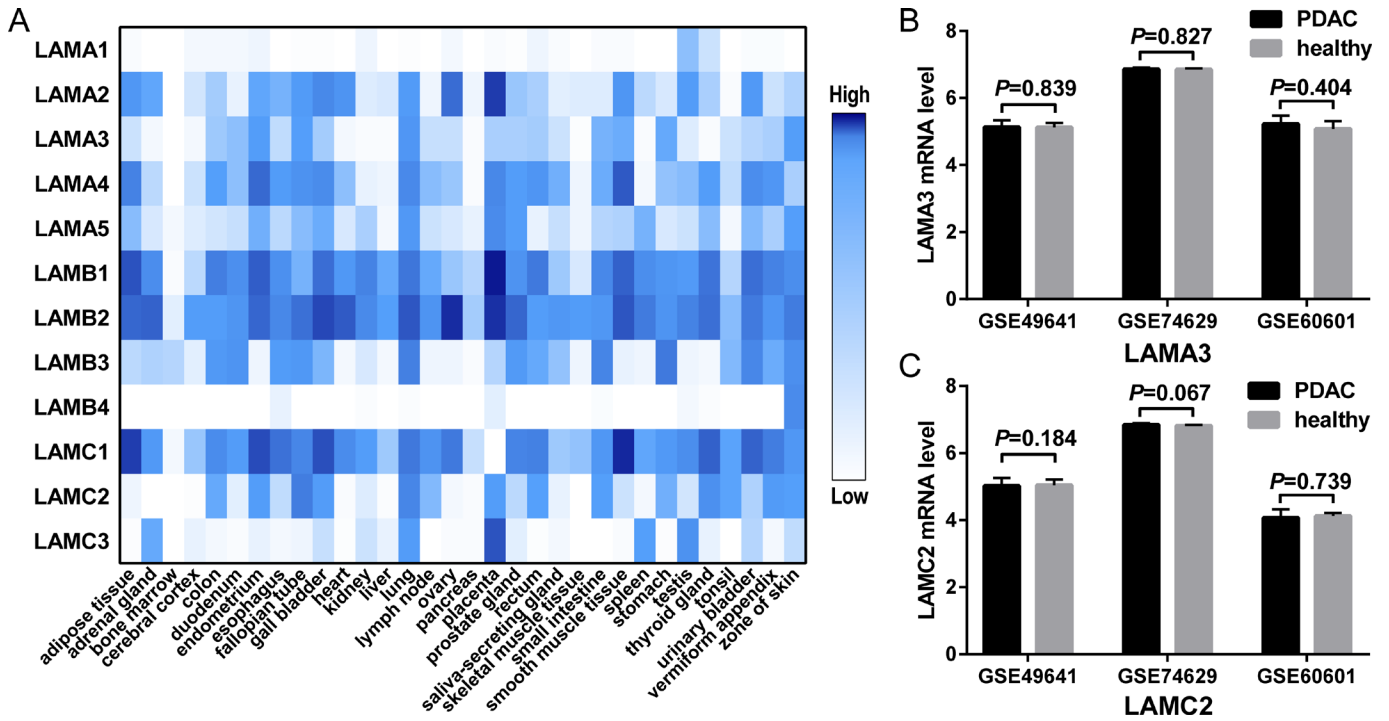
Supplementary Figure 1. (A) KEGG pathway and (B) GO term enrichment plots of genes of the laminin family enriched obtained through the *ClusterProfiler* R package.



Supplementary Figure 2. Expression levels of (A) LAMA3 and (B) LAMC2 in various normal tissues as analyzed through the GTEx database. The red arrows indicate pancreatic tissue.



Supplementary Figure 3. Heatmap for LAMA3, LAMA4, LAMB3 and LAMC2 expression levels in GEO PDAC and non-tumor tissues. Green and red colors represent low and high mRNA expression levels, respectively. Group i-iv represent LAMA3, LAMA4, LAMB3 and LAMC2, respectively.



Supplementary Figure 4. (A) Expression of genes of the laminin family in GTEx normal tissues. (B–C) Expression of LAMA3 and LAMC2 between PDAC patient and healthy control blood samples (GSE49641: peripheral blood mononuclear cells; GSE74629: peripheral blood; GSE60601: classical CD14⁺⁺ CD16⁻ monocytes).

Supplementary Tables

Supplementary Table 1. Survival analysis of laminin gene family in GSE21501 PDAC patients.

Variables		MST (months)	<i>P</i> value	HR (95%CI)*	<i>P</i> value
LAMA1	low	19	0.425		0.435
	high	18		1.21(0.75-1.97)	
LAMA2	low	17	0.180		0.192
	high	19		0.72(0.44-1.18)	
LAMA3	low	21	0.002		0.003
	high	14		2.18(1.30-3.65)	
LAMA4	low	21	0.057		0.065
	high	14		1.59(0.97-2.59)	
LAMA5	low	21	0.051		0.059
	high	17		1.61(0.98-2.64)	
LAMB1	low	18	0.746		0.751
	high	19		1.08(0.66-1.77)	
LAMB2	low	18	0.439		0.449
	high	18		1.21(0.74-1.96)	
LAMB3	low	21	0.401		0.411
	high	17		1.23(0.75-2.00)	
LAMB4	low	19	0.557		0.566
	high	17		1.15(0.71-1.87)	
LAMC1	low	15	0.596		0.604
	high	19		0.88(0.54-1.43)	
LAMC2	low	23	0.017		0.021
	high	15		1.80(1.09-2.97)	
LAMC3	low	15	0.264		0.276
	high	21		0.76(0.47-1.24)	
LAMA4-3y	low	19	0.005		0.007
	high	13		2.04 (1.21-3.42)	

Notes: *HR for the univariate Cox proportional hazards regression analysis.

Abbreviations: PDAC, pancreatic ductal adenocarcinoma; MST, median survival time; HR, hazard ratio; CI, confidence interval.

Supplementary Table 2. Combined survival analysis of LAMA3 and LAMC2 expression in GSE21501 PDAC patients.

Variables	MST (months)	<i>P</i> value	HR (95%CI)	<i>P</i> value
Low LAMA3+Low LAMC2	35	0.010		0.017
Low LAMA3+High LAMC2	19		1.66(0.77-3.58)	0.201
High LAMA3+Low LAMC2	16		2.23(0.99-5.01)	0.053
High LAMA3+High LAMC2	14		2.77(1.47-5.24)	0.002

Notes: *HR for the univariate Cox proportional hazards regression analysis.

Abbreviations: PDAC, pancreatic ductal adenocarcinoma; MST, median survival time; HR, hazard ratio; CI, confidence interval.

Supplementary Table 3. Expression of laminin gene family in PDAC datasets and serum LAMC2 and CA19-9 level enrolled in this study.

Datasets	First author	Year	Variables	No.	non-tumor		No.	PDAC		P value	AUC	95%CI		P value
					Mean	SD		Mean	SD			lower	upper	
GSE28735 (1, 2)	Zhang G	2012	LAMA3	45	4.84	0.58	45	6.19	0.80	<0.001	0.910	0.847	0.972	<0.001
			LAMA4	45	6.42	1.17	45	7.18	0.66	<0.001	0.939	0.892	0.987	<0.001
			LAMB3	45	4.39	0.88	45	6.74	1.14	<0.001	0.700	0.590	0.811	0.001
			LAMC2	45	4.98	1.25	45	7.88	1.24	<0.001	0.937	0.890	0.985	<0.001
GSE32676 (3)	Donahue TR	2011	LAMA3	7	5.20	1.92	25	8.94	1.50	<0.001	0.926	0.820	1	0.001
			LAMA4	7	8.13	0.98	25	8.41	1.15	0.572	0.646	0.405	0.887	0.245
			LAMB3	7	4.52	2.16	25	9.39	1.50	<0.001	0.954	0.864	1	<0.001
			LAMC2	7	4.27	1.65	25	9.20	1.68	<0.001	0.977	0.932	1	<0.001
GSE55643 (4)	Lunardi S	2014	LAMA3	7	5.49	1.42	45	7.45	1.67	0.005	0.810	0.655	0.964	0.009
			LAMA4	7	12.67	1.14	45	13.07	0.89	0.267	0.508	0.276	0.740	0.947
			LAMB3	8	13.72	1.46	45	15.21	1.52	0.014	0.781	0.636	0.926	0.018
			LAMC2	8	7.72	1.43	45	9.91	1.91	0.025	0.848	0.744	0.951	0.003
GSE56560 (5, 6)	Haider S	2014	LAMA3	7	84.17 173.7	21.2 38.4	28	263.05 33	147. 167.	<0.001	1	1	1	<0.001
			LAMA4	7	0 155.9	3 64.3	28	631.87 503.	24	<0.001	1	1	1	<0.001
			LAMB3	7	2 100.2	5 56.1	28	799.61 1177.8	45 622.	<0.001	0.99	0.964	1	<0.001
			LAMC2	7	0 2	2 2	28	8 80	80	<0.001	1	1	1	<0.001
GSE62165 (7)	Janky R	2016	LAMA3	13	6.05	1.38	118	9.33	1.10	<0.001	0.952	0.889	1	<0.001
			LAMA4	13	6.71	0.71	118	8.73	0.53	<0.001	0.983	0.950	1	<0.001
			LAMB3	13	5.59	1.55	118	9.73	0.91	<0.001	0.980	0.951	1	<0.001
			LAMC2	13	6.48	1.25	118	10.85	0.88	<0.001	0.996	0.989	1	<0.001
GSE62452 (8)	Yang S	2016	LAMA3	61	4.64	0.54	69	5.89	0.82	<0.001	0.899	0.845	0.953	<0.001
			LAMA4	61	6.03	1.18	69	6.83	0.73	<0.001	0.708	0.615	0.800	<0.001
			LAMB3	61	4.38	0.84	69	6.46	1.29	<0.001	0.906	0.857	0.955	<0.001
			LAMC2	61	4.66	1.24	69	7.30	1.43	<0.001	0.909	0.860	0.958	<0.001
GSE91035	Schmittgen T	2016	LAMA3	25	8.79	1.48	25	10.42	1.96	0.002	0.725	0.581	0.869	0.006
			LAMA4	25	8.18	1.12	25	9.63	1.12	<0.001	0.816	0.698	0.934	<0.001
			LAMB3	25	9.78	2.05	25	12.18	2.49	0.001	0.774	0.642	0.907	0.001
			LAMC2	25	9.06	1.82	25	11.77	2.48	<0.001	0.797	0.667	0.926	<0.001
GSE101448 (9)	Klett H	2018	LAMA3	19	8.36	0.83	24	10.41	1.31	<0.001	0.877	0.766	0.988	<0.001
			LAMA4	19	9.53	0.74	24	11.13	0.49	<0.001	0.996	0.984	1	<0.001
			LAMB3	19	9.44	1.21	24	13	1.32	<0.001	0.954	0.889	1	<0.001
			LAMC2	19	8.66	0.74	24	11.56	1.19	<0.001	0.954	0.885	1	<0.001
GSE102238	Sun Y	2017	LAMA3	50	4.16	0.67	50	3.88	0.43	0.015	0.620	0.510	0.730	0.039
			LAMA4	50	11.49	0.83	50	12.16	0.57	<0.001	0.744	0.645	0.844	<0.001
			LAMB3	50	4.60	0.54	50	4.26	0.36	<0.001	0.309	0.204	0.414	0.001
			LAMC2	50	10.57 141.7	1.52 179.	50	11.66 326.	0.75	<0.001	0.714	0.605	0.822	<0.001
USA cohort (10)	Hari Kosanam	2013	LAMC2	35	1	05	50	499.82	85	<0.001	0.845	0.759	0.931	<0.001
			CA19-9	35	23.91	42.6	50	2486.0	3804	<0.001	0.863	0.787	0.940	<0.001

					6	6	.24								
German cohort (10)	Hari Kosanam	2013	LAMC2	100	220.2	247.3	64.5	100	440.95	88	<0.001	0.695	0.621	0.768	<0.001
			CA19-9	100	17.51	0	139.9	100	602.33	.56	<0.001	0.847	0.791	0.903	<0.001
Japan cohort (10)	Hari Kosanam	2013	LAMC2	50	1	24	101.2	50	382.20	23	<0.001	0.787	0.695	0.878	<0.001
			CA19-9	50	4	75	611.	50	1699.7	3096	0.001	0.827	0.739	0.914	<0.001

Abbreviations: PDAC, pancreatic ductal adenocarcinoma; SD, standard deviation; AUC, area under the curve; CI, confidence interval.

Supplementary References

- Zhang G, Schetter A, He P, Funamizu N, Gaedcke J, Ghadimi BM, Ried T, Hassan R, Yfantis HG, Lee DH, Lacy C, Maitra A, Hanna N, et al. DPEP1 inhibits tumor cell invasiveness, enhances chemosensitivity and predicts clinical outcome in pancreatic ductal adenocarcinoma. *PLoS One*. 2012; 7:e31507. <https://doi.org/10.1371/journal.pone.0031507> PMID:22363658
- Zhang G, He P, Tan H, Budhu A, Gaedcke J, Ghadimi BM, Ried T, Yfantis HG, Lee DH, Maitra A, Hanna N, Alexander HR, Hussain SP. Integration of metabolomics and transcriptomics revealed a fatty acid network exerting growth inhibitory effects in human pancreatic cancer. *Clin Cancer Res*. 2013; 19:4983–93. <https://doi.org/10.1158/1078-0432.CCR-13-0209> PMID:23918603
- Donahue TR, Tran LM, Hill R, Li Y, Kovochich A, Calvopina JH, Patel SG, Wu N, Hindoyan A, Farrell JJ, Li X, Dawson DW, Wu H. Integrative survival-based molecular profiling of human pancreatic cancer. *Clin Cancer Res*. 2012; 18:1352–63. <https://doi.org/10.1158/1078-0432.CCR-11-1539> PMID:22261810
- Lunardi S, Jamieson NB, Lim SY, Griffiths KL, Carvalho-Gaspar M, Al-Assar O, Yameen S, Carter RC, McKay CJ, Spoletini G, D'Ugo S, Silva MA, Sansom OJ, et al. IP-10/CXCL10 induction in human pancreatic cancer stroma influences lymphocytes recruitment and correlates with poor survival. *Oncotarget*. 2014; 5:11064–80. <https://doi.org/10.18632/oncotarget.2519> PMID:25415223
- Haider S, Wang J, Nagano A, Desai A, Arumugam P, Dumartin L, Fitzgibbon J, Hagemann T, Marshall JF, Kocher HM, Crnogorac-Jurcevic T, Scarpa A, Lemoine NR, Chelala C. A multi-gene signature predicts outcome in patients with pancreatic ductal adenocarcinoma. *Genome Med*. 2014; 6:105. <https://doi.org/10.1186/s13073-014-0105-3> PMID:25587357
- Wang J, Dumartin L, Mafficini A, Ulug P, Sangaralingam A, Alamiry NA, Radon TP, Salvia R, Lawlor RT, Lemoine NR, Scarpa A, Chelala C, Crnogorac-Jurcevic T. Splice variants as novel targets in pancreatic ductal adenocarcinoma. *Sci Rep*. 2017; 7:2980. <https://doi.org/10.1038/s41598-017-03354-z> PMID:28592875
- Janky R, Binda MM, Allemeersch J, Van den Broeck A, Govaere O, Swinnen JV, Roskams T, Aerts S, Topal B. Prognostic relevance of molecular subtypes and master regulators in pancreatic ductal adenocarcinoma. *BMC Cancer*. 2016; 16:632. <https://doi.org/10.1186/s12885-016-2540-6> PMID:27520560
- Yang S, He P, Wang J, Schetter A, Tang W, Funamizu N, Yanaga K, Uwagawa T, Satoskar AR, Gaedcke J, Bernhardt M, Ghadimi BM, Gaida MM, et al. A novel MIF signaling pathway drives the malignant character of pancreatic cancer by targeting NR3C2. *Cancer Res*. 2016; 76:3838–50. <https://doi.org/10.1158/0008-5472.CAN-15-2841> PMID:27197190
- Klett H, Fuellgraf H, Levit-Zerdoun E, Hussung S, Kowar S, Küsters S, Bronsert P, Werner M, Wittel U, Fritsch R, Busch H, Boerries M. Identification and Validation of a Diagnostic and Prognostic Multi-Gene Biomarker Panel for Pancreatic Ductal Adenocarcinoma. *Front Genet*. 2018; 9:108. <https://doi.org/10.3389/fgene.2018.00108> PMID:29675033
- Kosanam H, Prassas I, Chrystoja CC, Soleas I, Chan A, Dimitromanolakis A, Blasutig IM, Rückert F, Gruetzmann R, Pilarsky C, Maekawa M, Brand R, Diamandis EP. Laminin, gamma 2 (LAMC2): a promising new putative pancreatic cancer biomarker identified by proteomic analysis of pancreatic adenocarcinoma tissues. *Mol Cell Proteomics*. 2013; 12:2820–32.

<https://doi.org/10.1074/mcp.M112.023507>
[PMID:23798558](#)