

Correction for: Ubiquitin-specific protease 4 promotes metastasis of hepatocellular carcinoma by increasing TGF- β signaling-induced epithelial-mesenchymal transition

Chan Qiu^{1,*}, Yan Liu^{2,*}, Ying Mei³, Min Zou¹, Zhibo Zhao³, Mingxin Ye⁴, Xiaoling Wu¹

¹Department of Gastroenterology, the Second Affiliated Hospital of Chongqing Medical University, Chongqing, 400010, P.R. China

²Department of Gastroenterology, the Fifth People's Hospital of Chengdu, Chengdu, Sichuan, 611130, P.R. China

³Department of Hepatobiliary Surgery, the Second Affiliated Hospital of Chongqing Medical University, Chongqing, 400010, P.R. China

⁴Department of Hepatobiliary Surgery, the Affiliated Hospital of Southwest Medical University, Lu zhou, Sichuan, 646000, P.R. China

*Equal contribution

Correspondence to: Mingxin Ye, Xiaoling Wu; email: Mingxin_Y@163.com, wuxiaoling@cqmu.edu.cn

Original article: [Aging \(Albany NY\) 2018; 10: 2783-2799.](#)

PMCID: PMC6224254 PMID: 30335615 doi: 10.18632/aging.101587

This article has been corrected: The authors submitted the wrong Figure 5 (panel F) from other experiment group in this study and requested to replace it. The correct Figure 5 is provided below. The authors declare that this correction does not change the results or conclusions of this paper. The authors sincerely apologize for this error.

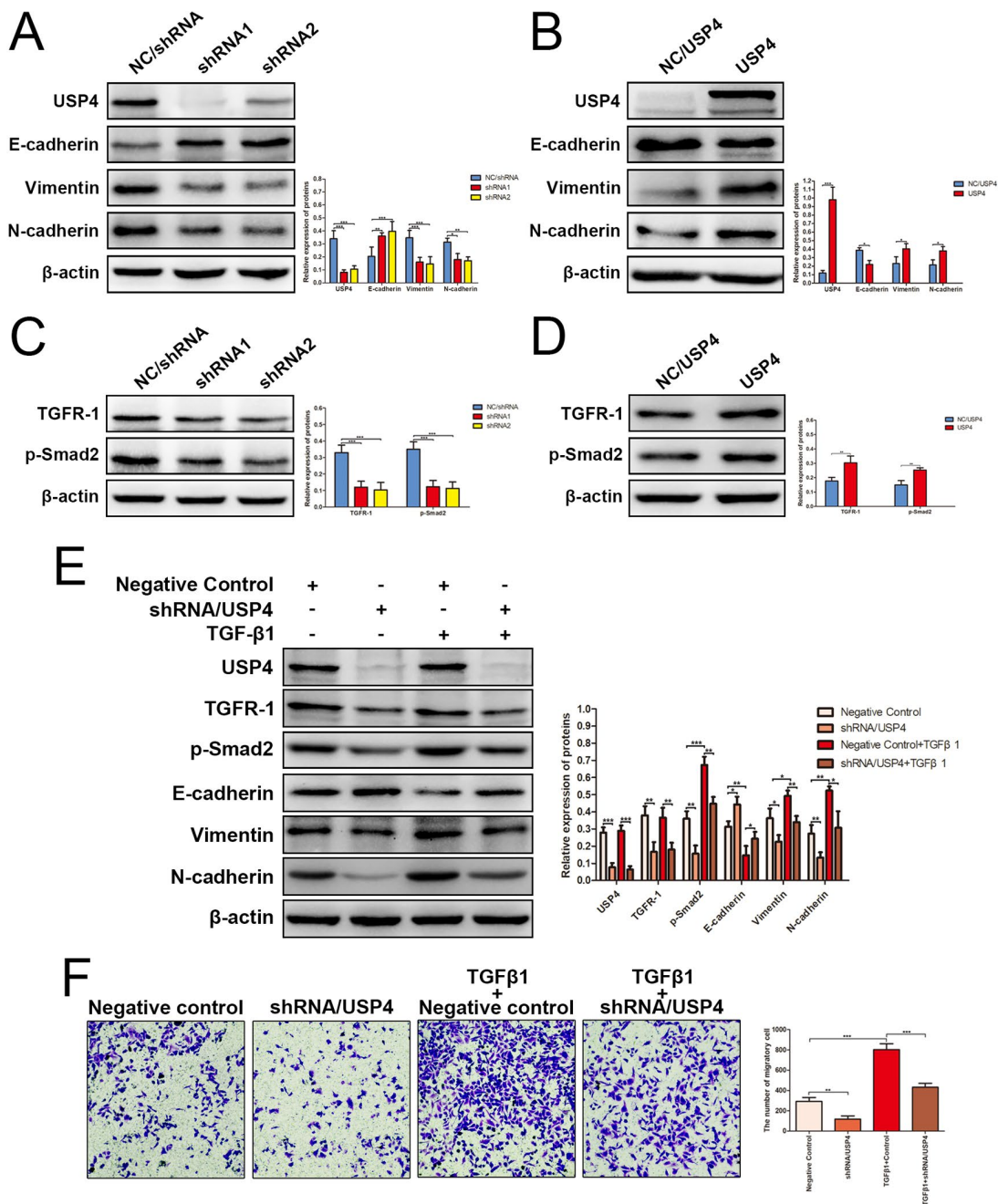


Figure 5. USP4 activated TGF- β signaling pathway to induce epithelial-to-mesenchymal transition (EMT). (A) The expression of EMT markers in SK-Hep1- shRNA/USP4 cells and in negative control cells (* $P < 0.05$, ** $P < 0.01$, *** $P < 0.001$). (B) The expression of EMT markers in HuH7-USP4 cells and in negative control cells (* $P < 0.05$, *** $P < 0.001$). (C) The expression of TGFR-1 and p-Smad2 in SK-Hep1- shRNA/USP4 cells and in negative control cells (*** $P < 0.001$). (D) The expression of TGFR-1 and p-Smad2 in HuH7-USP4 cells and in negative control cells (* $P < 0.05$, ** $P < 0.01$). (E) The expression of TGFR-1, p-Smad2 and EMT markers in SK-Hep1- shRNA/USP4 cells or in negative control cells, with TGF- β 1 (10ng/mL) treatment for 24h or without (* $P < 0.05$, ** $P < 0.01$, *** $P < 0.001$). (F) The migration ability of SK-Hep1-shRNA/USP4 cells or negative control cells, with TGF- β 1 treatment or without, detected by Transwell migration assay (** $P < 0.01$, *** $P < 0.001$).