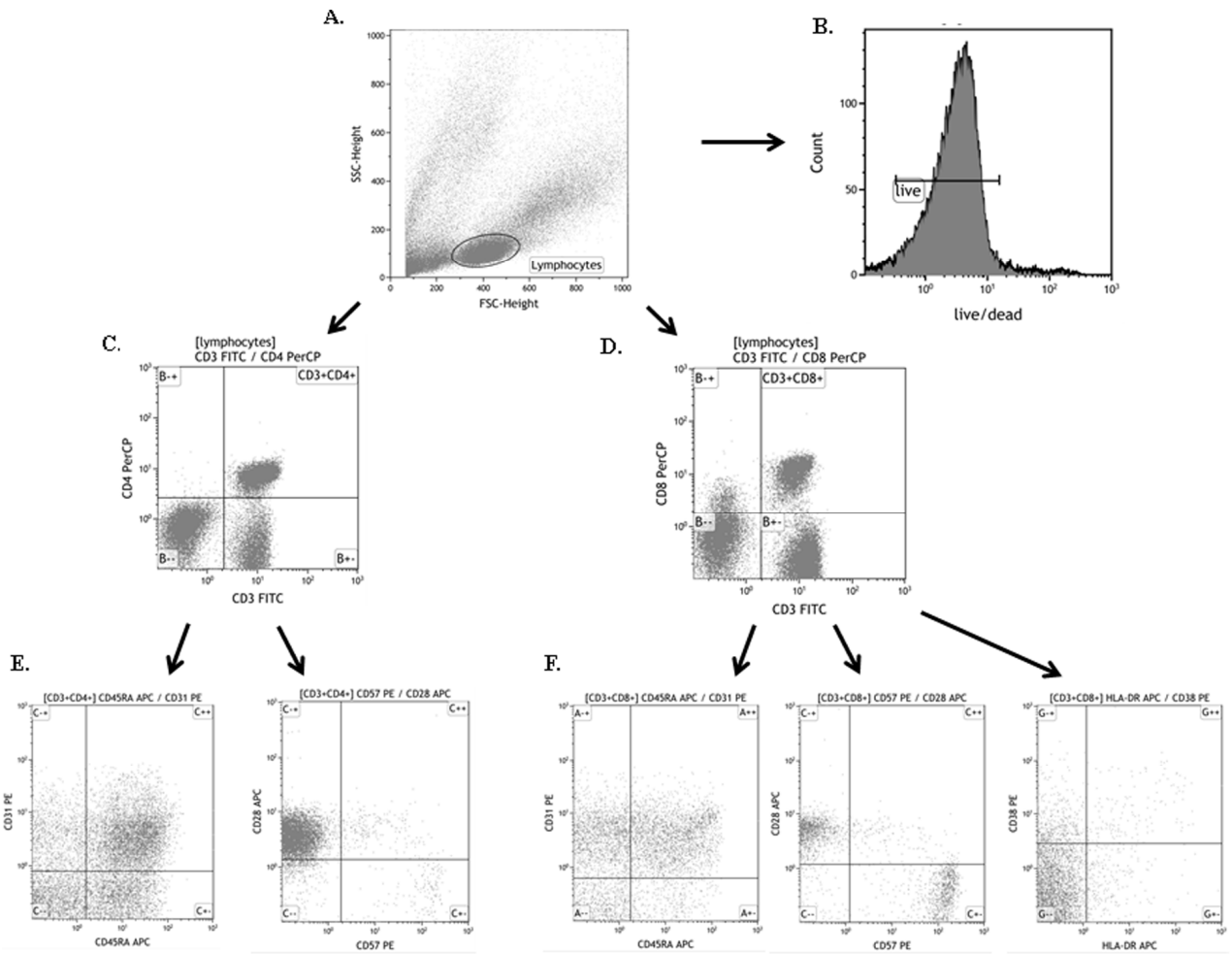


**SUPPLEMENTARY FIGURE**



**Supplementary Figure 1. Gating strategy for flow cytometry analysis to identify CD4<sup>+</sup> and CD8<sup>+</sup> cell subsets.** (A) Cells were first gated for lymphocytes (FSC versus SSC). (B) Lymphocyte gate was in parallel analysed for uptake of the Live/Dead Fixable Near-IR Dead to determine live versus dead cells. The expression of (C) CD3<sup>+</sup>CD4<sup>+</sup> or (D) CD3<sup>+</sup>CD8<sup>+</sup> was determined on morphological gate for lymphocytes. (E) Within CD3<sup>+</sup>CD4<sup>+</sup>, CD45RA and CD31 markers were used to identify recent thymic emigrant (RTE, CD45RA<sup>+</sup>CD31<sup>+</sup>) and CD57 and CD28 markers for senescent cells (CD28<sup>+</sup>CD57<sup>+</sup>). (F) Within CD3<sup>+</sup>CD8<sup>+</sup> gate, CD45RA and CD31 markers were used to identify recent thymic emigrant (RTE, CD45RA<sup>+</sup>CD31<sup>+</sup>), CD57 and CD28 markers for senescent cells (CD28<sup>+</sup>CD57<sup>+</sup>), and CD38 and HLA-DR for activated cells (CD38<sup>+</sup>HLA-DR<sup>+</sup>).