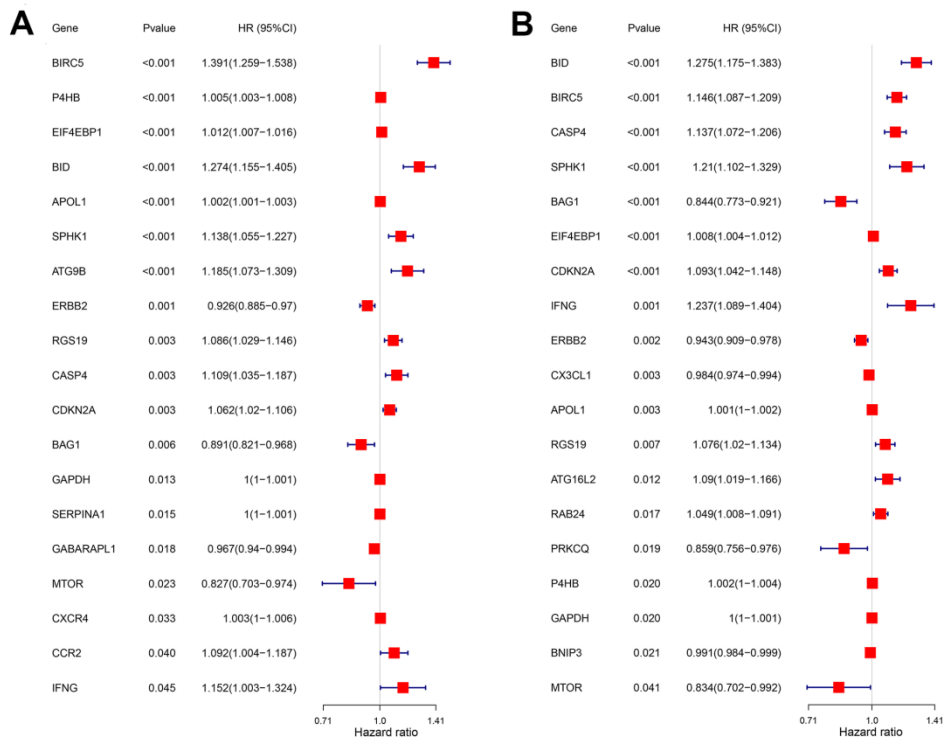
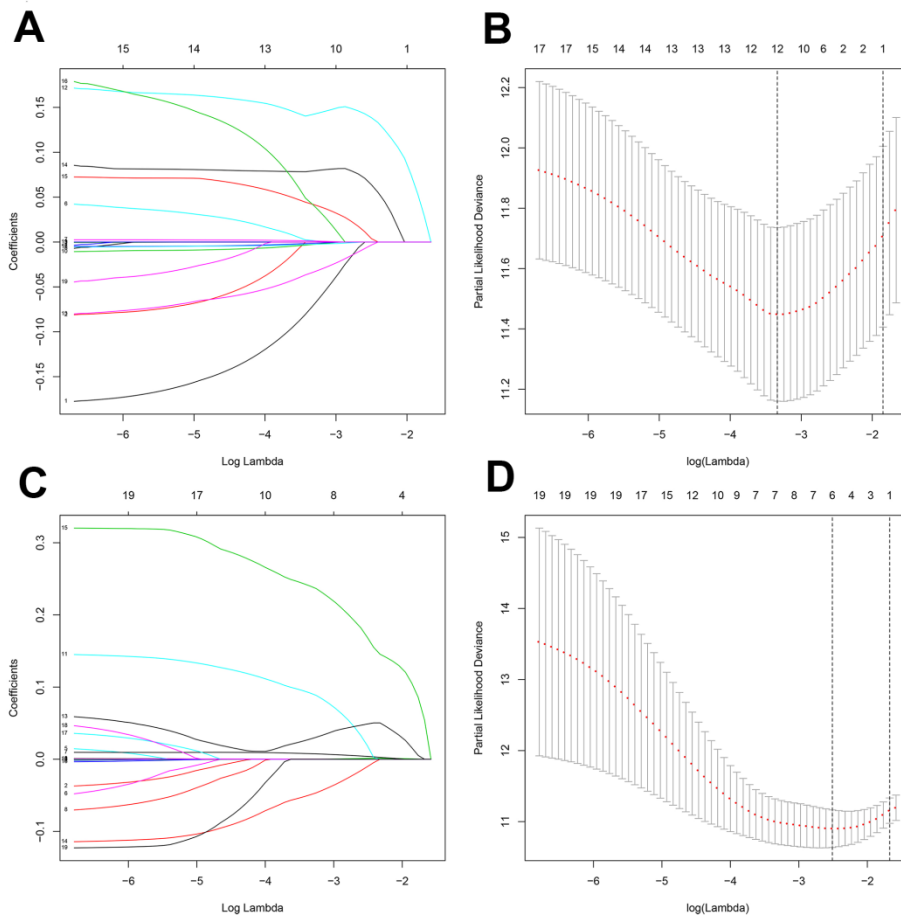


SUPPLEMENTARY FIGURES



Supplementary Figure 1 - Univariate Cox regression analyses of DEARGs with prognostic potential in the training group ccRCC patients. (A) Correlation analysis of DEARGs using the OS model. (B) Correlation analysis of using the DFS model. Genes with p-values less than 0.05 are considered prognostic genes.



Supplementary Figure 2 - Lasso regression analysis of DEARGs with prognostic potential in the training group ccRCC patients.
 (A–B) Lasso regression analyses of DEARGs using the OS model. (C–D) Lasso regression analyses of DEARGs using the DFS model.