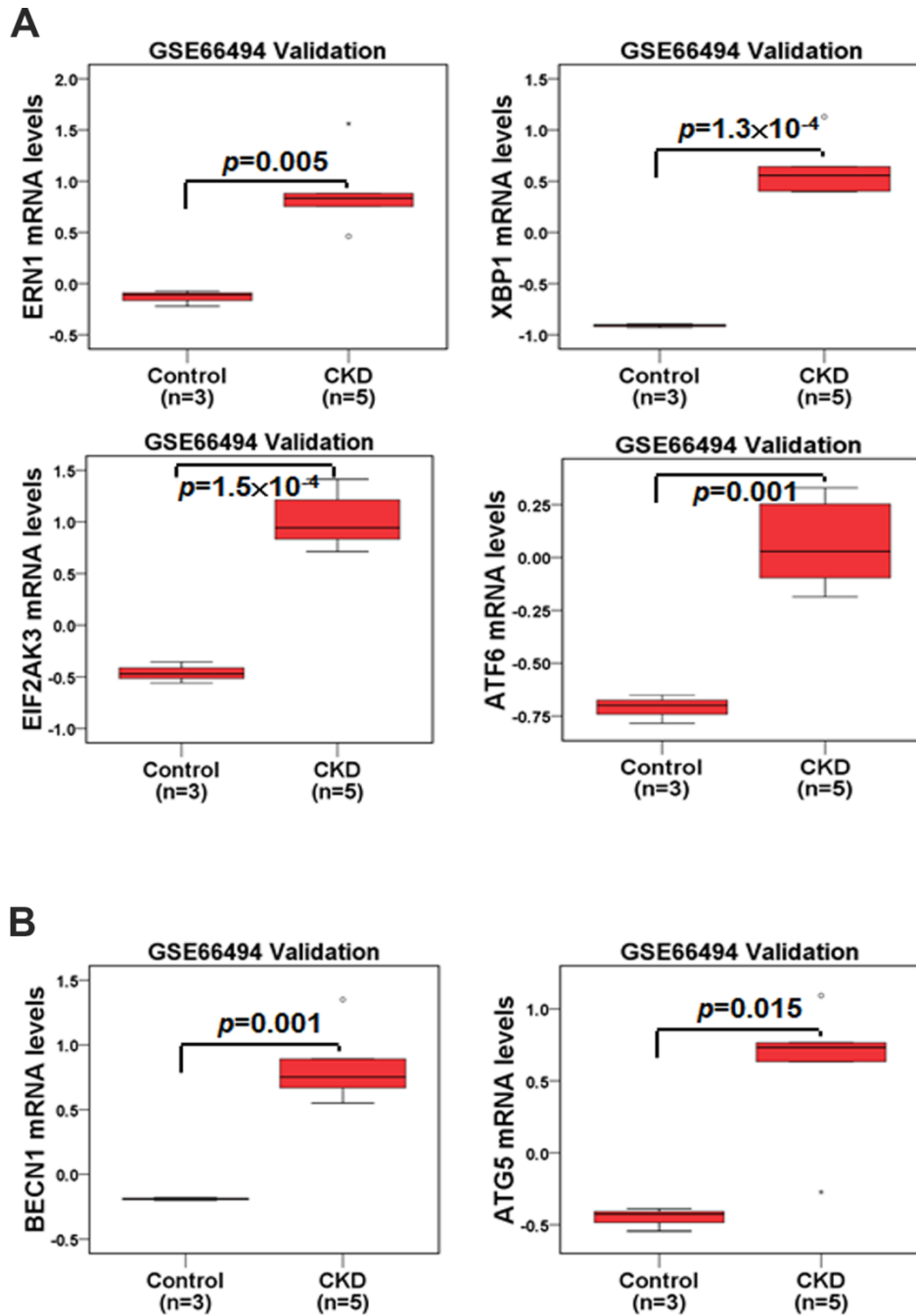
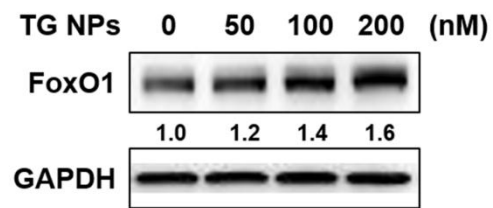


SUPPLEMENTARY FIGURES



Supplementary Figure 1. The mRNA levels of ER stress- and autophagy-related molecules were analyzed in the renal tissue of healthy individuals and CKD patients. The mRNA levels of *ERN1*, *XBP1*, *EIF2AK3*, *ATF6* (A), *BECN1* and *ATG5* (B) were evaluated. Statistical differences were analyzed using a two-sample t-test.



Supplementary Figure 2. The protein levels of FoxO1 in HK-2 cells treated with TG NPs are shown. Cells were treated with different concentrations of the TG NPs for 24 h.