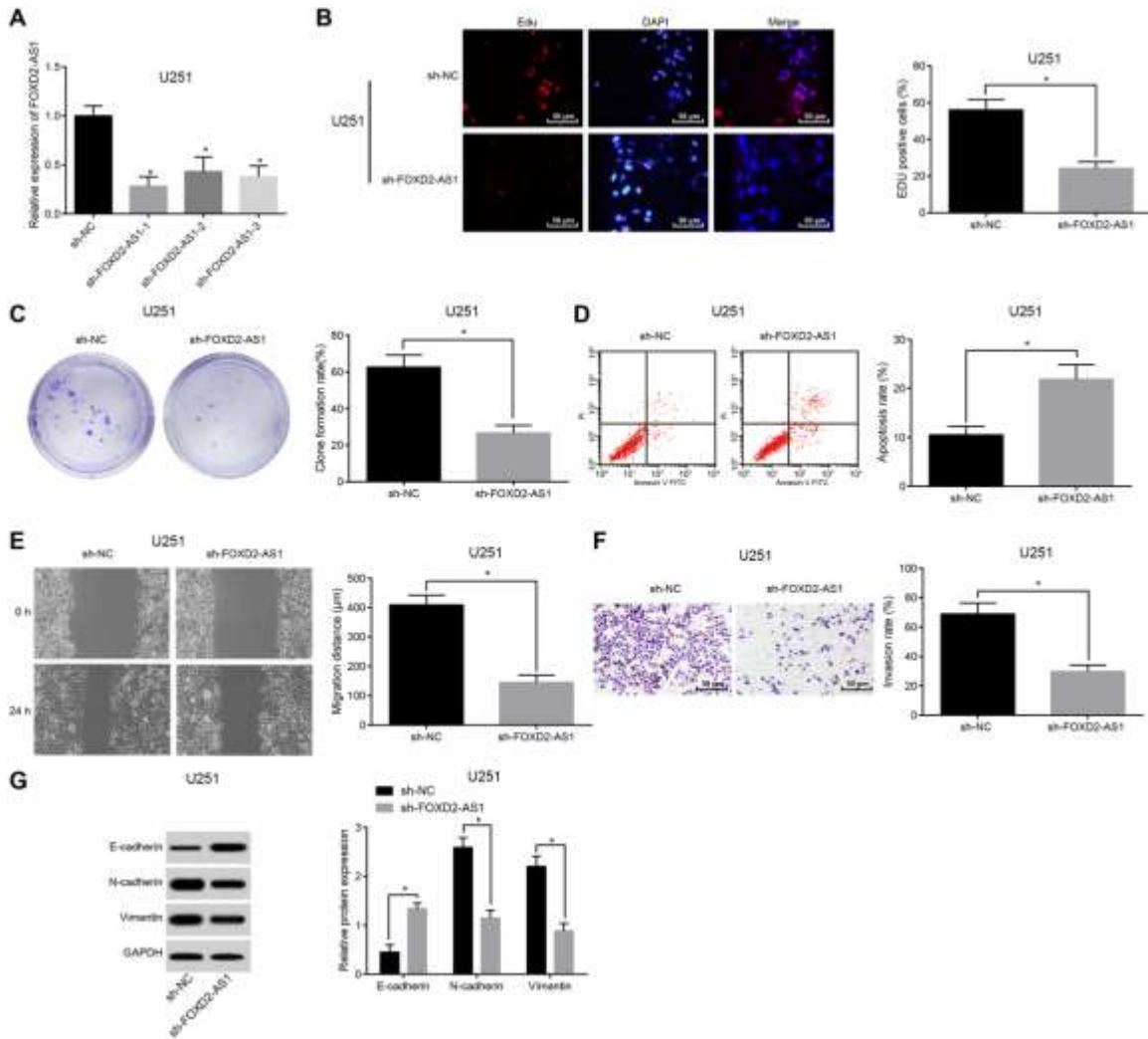


SUPPLEMENTARY FIGURE



Supplementary Figure 1. FOXD2-AS1 silence overtly inhibits the proliferation, migration, invasion and EMT of U251 glioma cells, and promotes their apoptosis. (A) The expression of FOXD2-AS1 in U251 cells detected by RT-qPCR. (B) The proliferation activity in U251 cells detected by EdU assay; (C) The colony formation ability of U251 cells detected by colony formation assay; (D) The apoptosis of U251 cells in each group examined via flow cytometry; (E) The migration ability of U251 cells in each group detected by scratch test; (F) The invasion of U251 cells in each group tested via Transwell assay; (G) The expression of EMT-related factor tested via Western blot analysis. * $P < 0.05$, vs the sh-NC group; The data in the figure were all measurement data, represented by mean \pm standard deviation. The comparison between the two groups was statistically analyzed by independent sample t test, and the experiment was repeated for three times.