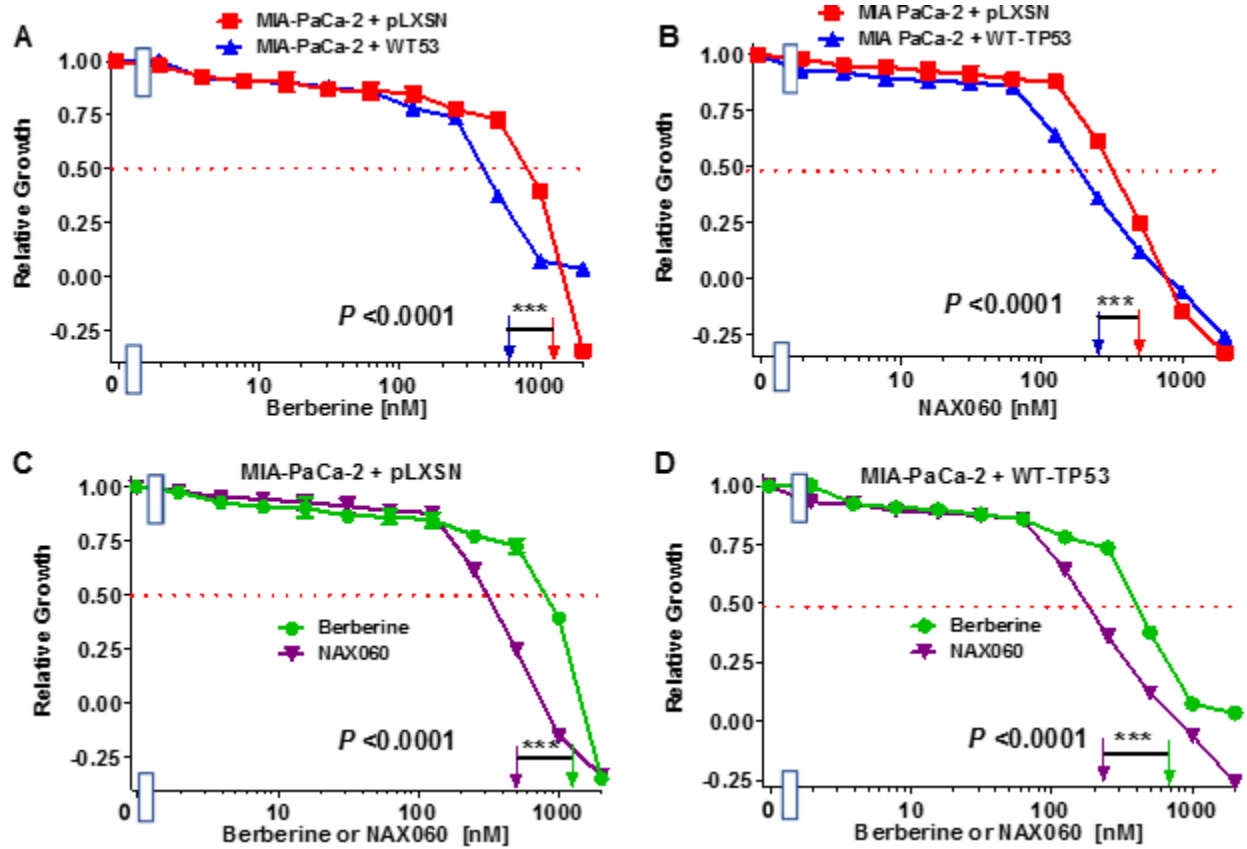
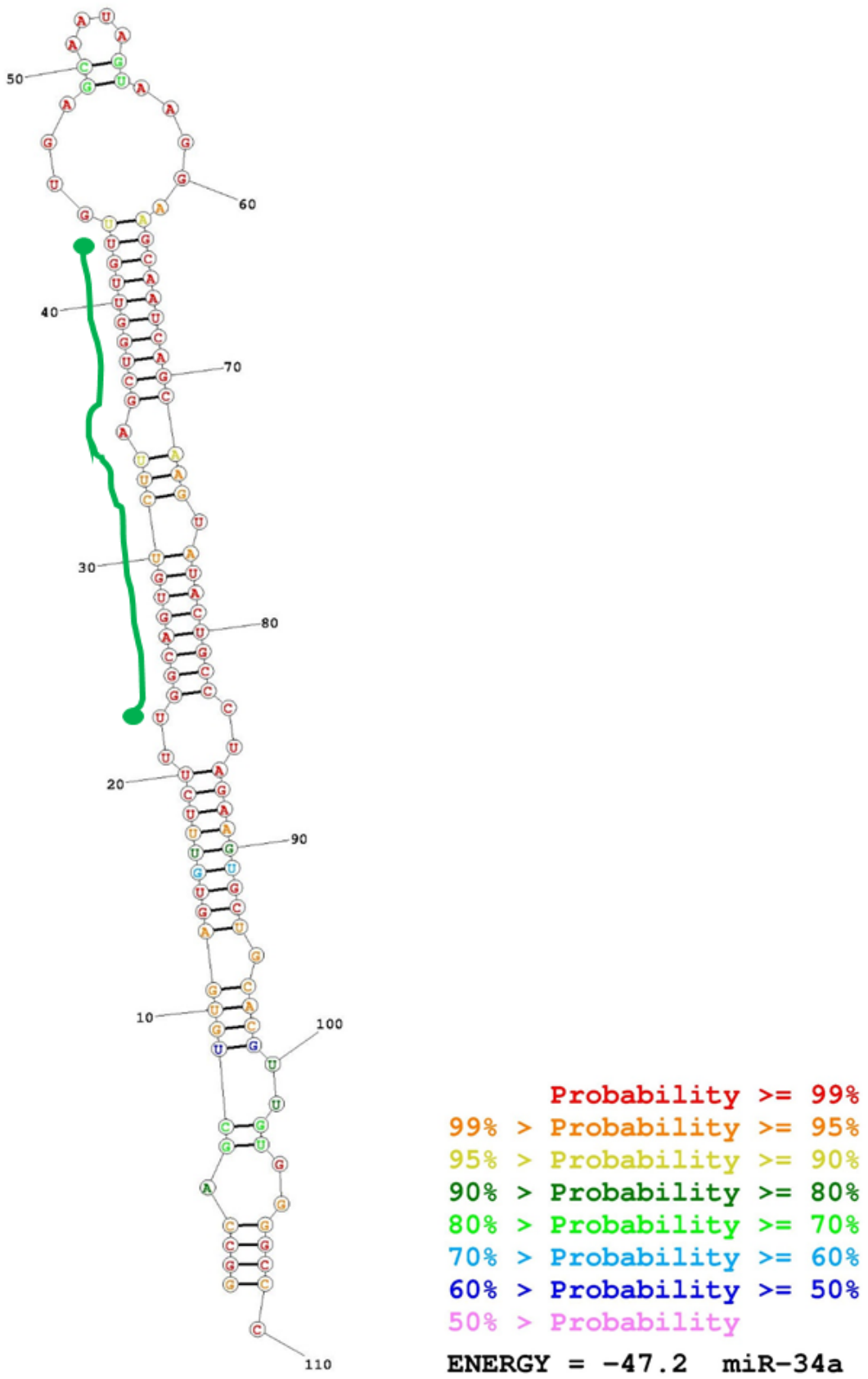


SUPPLEMENTARY FIGURES



Supplementary Figure 1. Effects of Different doses of BBR and MBBR (NAX060) on MIA-PaCa-2+pLXSN and MIA-PaCa-2+WT-TP53 Cells.



Supplementary Figure 2. Secondary structures of Pre-miR-34a. Structure was predicted using the RNAstructure software and base-pairing probability depicted in colors. Green line along the sequence denotes the mature sequence of hsa-miR-34a-5p (22 – 43).

```

(SERPINE1
Transcript) 5' CAU      GUGACG   CCC          3'
              CCAGC      GAG     ACACUGCCA
              |||||      .||    |||||
              GGUCG      UUC     UGUGACGGU
(miR-34a)   3'  U      A          5'

```

Transcript position: 940-965

Binding type: 9mer

Conserved species: panTro2,rheMac2,oryCun2,bosTau4,canFam2,dasNov2,loxAfr3,echTel1

miTG score: 0.906

Supplementary Figure 3. RNA hybrid analysis shows the miR-34a binding site located in 3'UTR of SERPINE1 mRNA. This is predicted using DIANA and MiRmap algorithms.