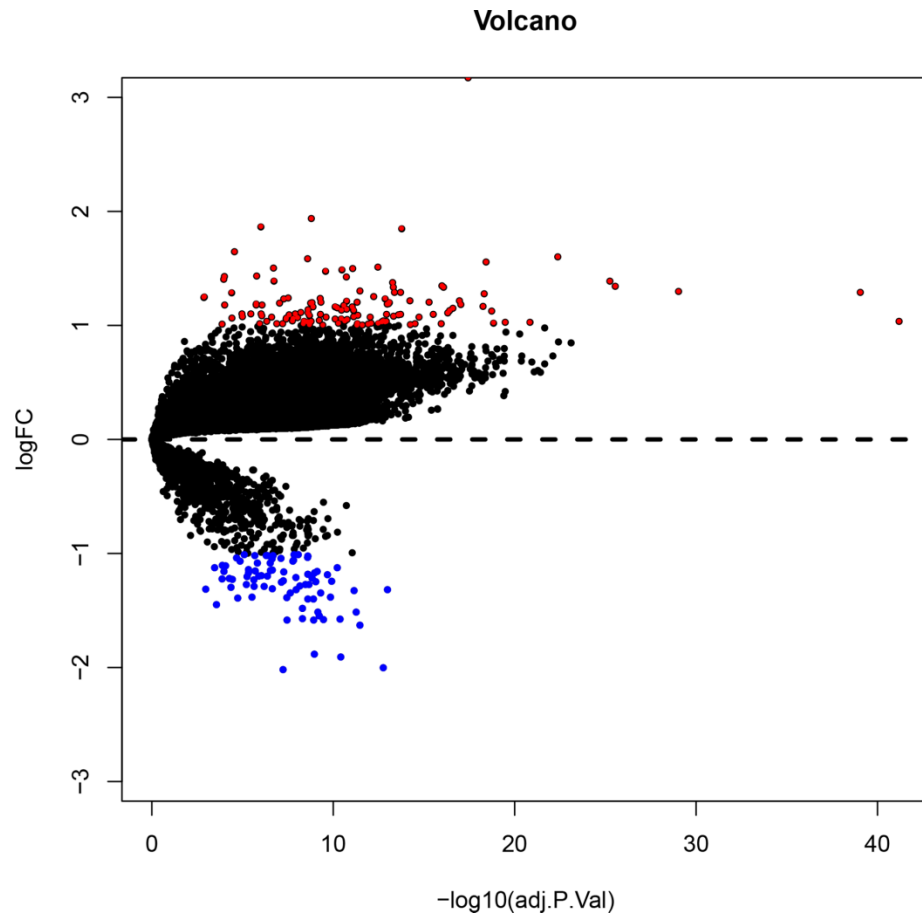
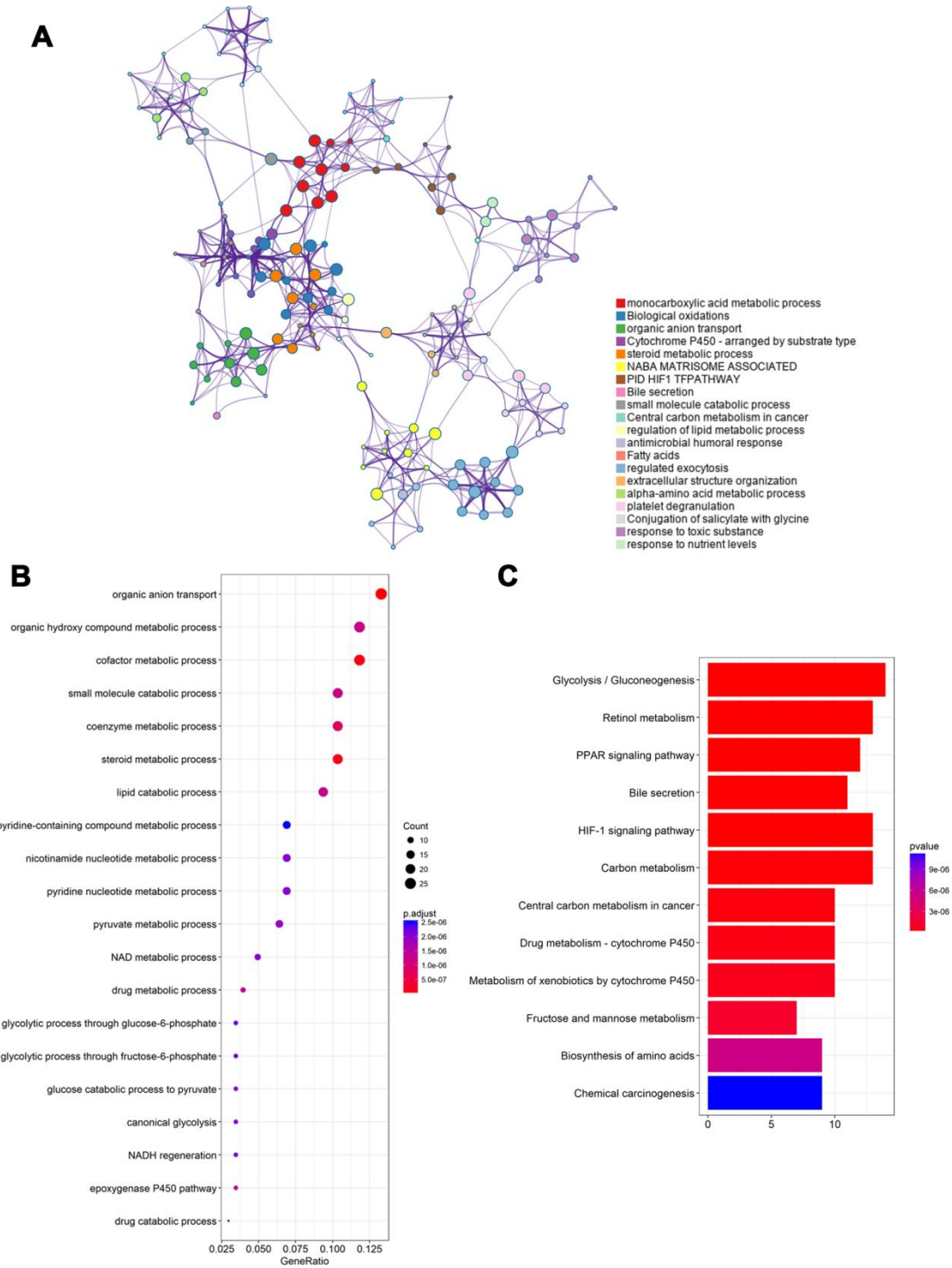


## SUPPLEMENTARY MATERIALS

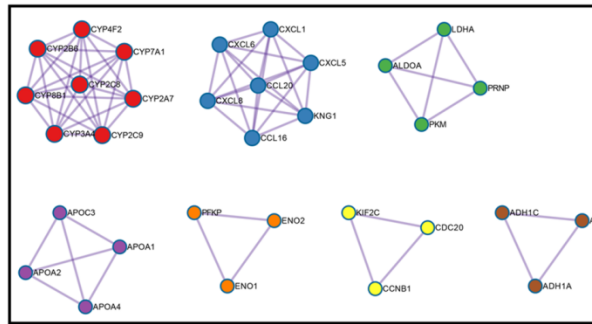
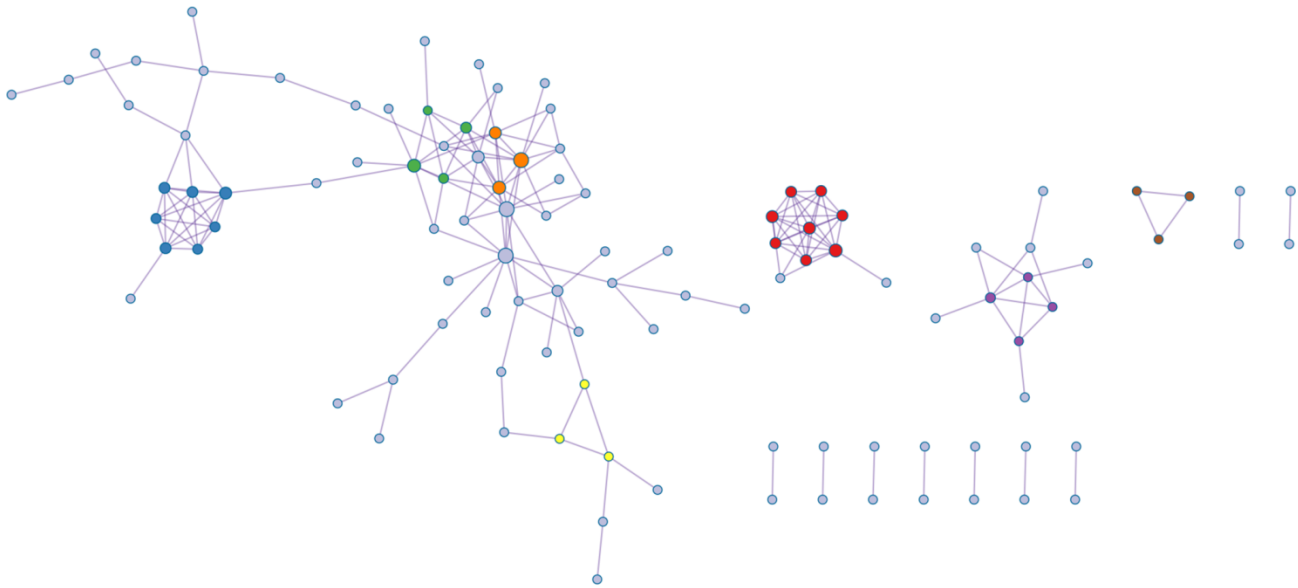
### Supplementary Figures



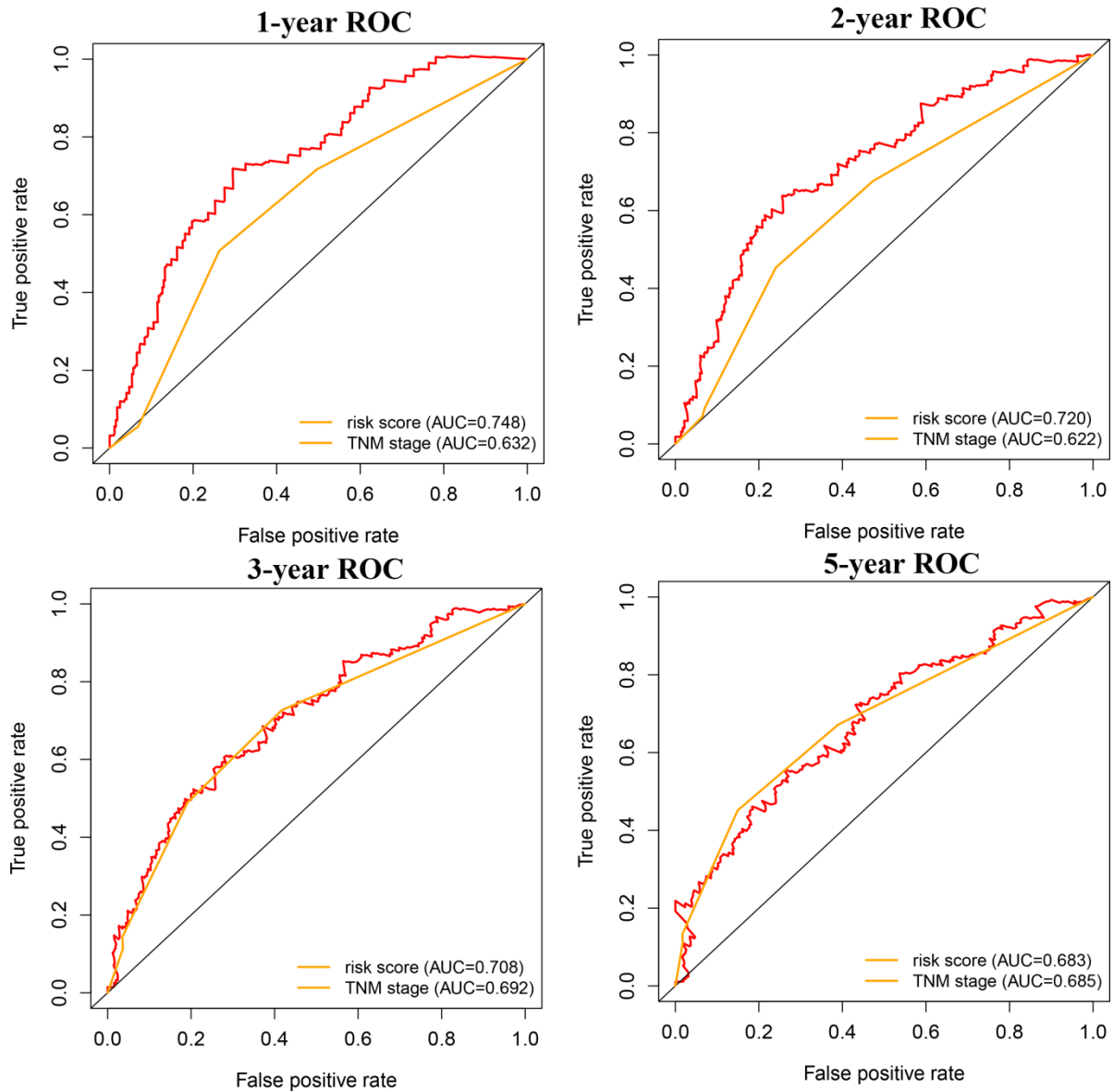
**Supplementary Figure 1.** The volcano plot showed the difference of expression profile between low-risk and high-risk groups.



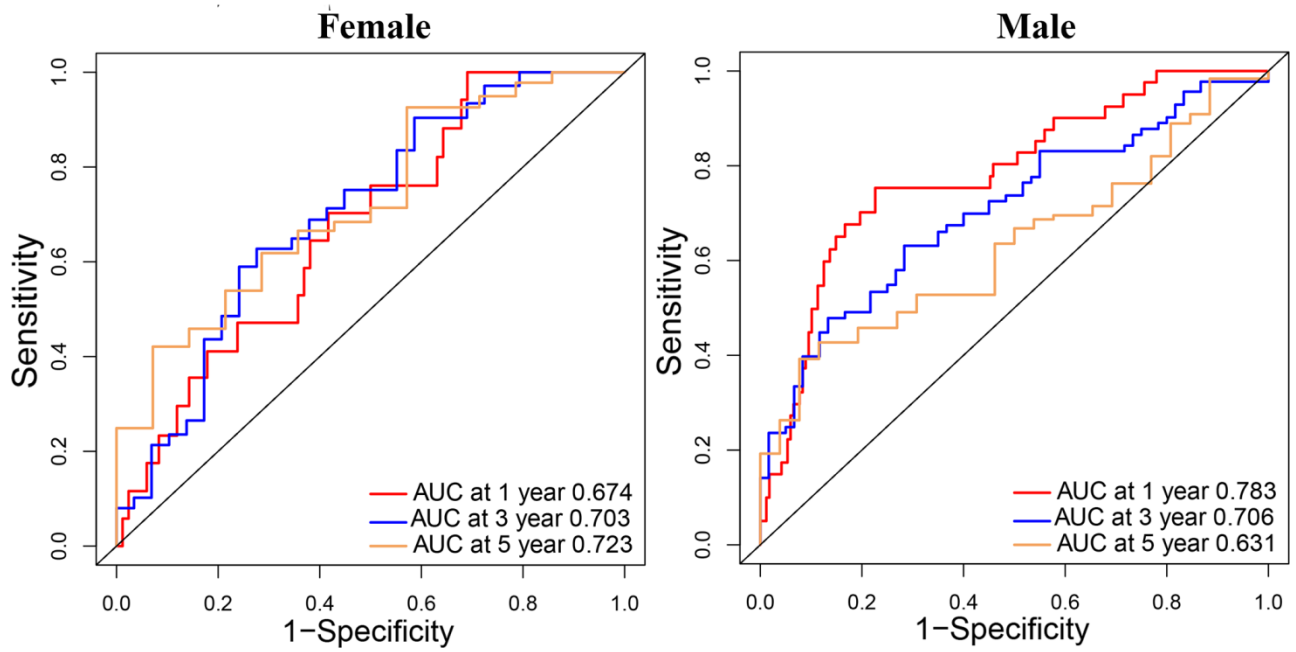
**Supplementary Figure 2.** The GO and KEGG analysis indicated that HIF-1 signaling pathway was enriched in the high-risk group (A–C).



**Supplementary Figure 3.** PPI network analysis displayed protein interactions of differently expressed genes between low-risk and high-risk groups.



**Supplementary Figure 4. The ROC analyses of the risk score and the TNM stage were conducted.** The risk score shows better predictive value than the TNM staging in short-term follow-up and still shows the same efficacy as the TNM staging in long-term follow-up.



**Supplementary Figure 5. The ROC analysis of risk score was performed in male and female patients.** The risk score seemed to be more precise in the short-term follow-up of male patients, but be more precise in the long-term follow-up of female patients.