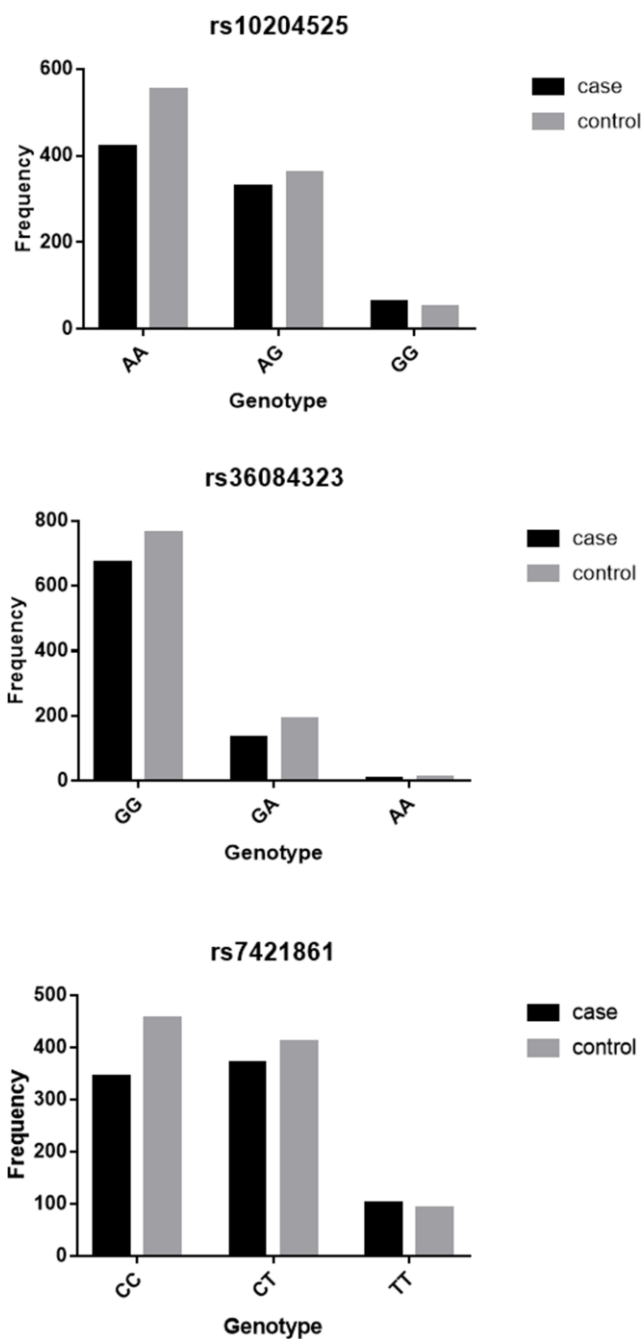
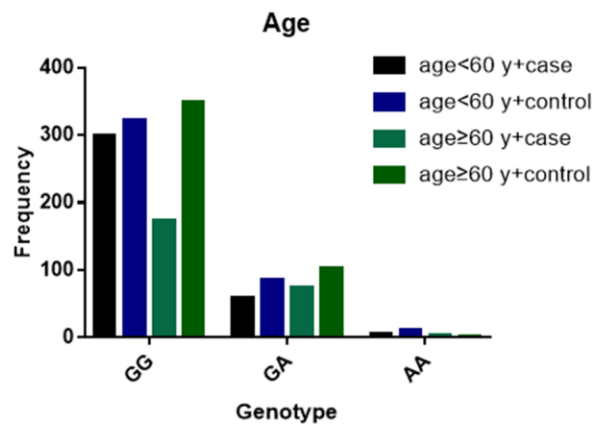
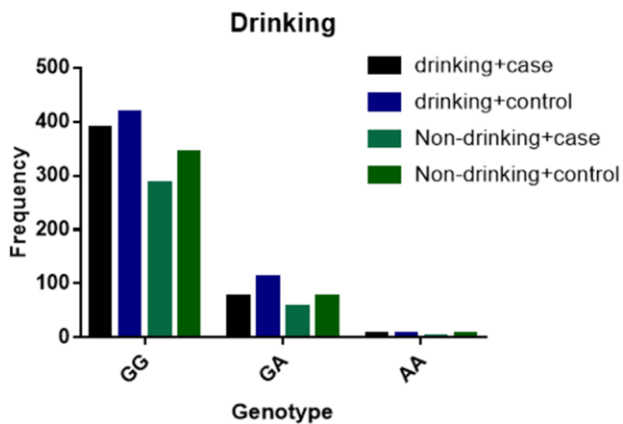
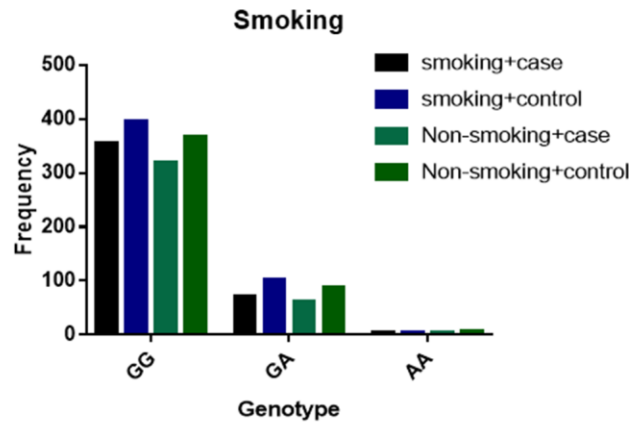
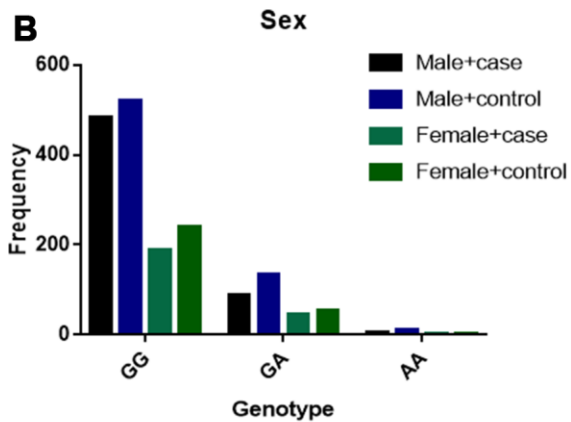
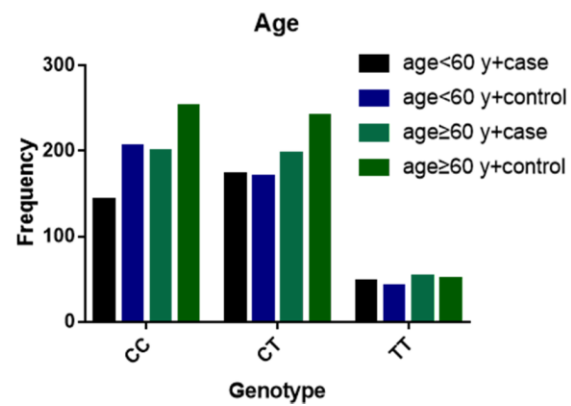
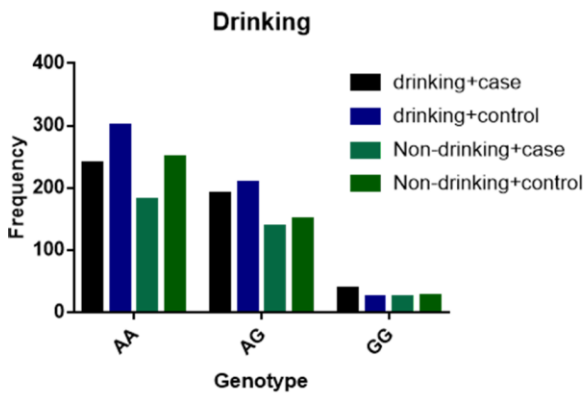
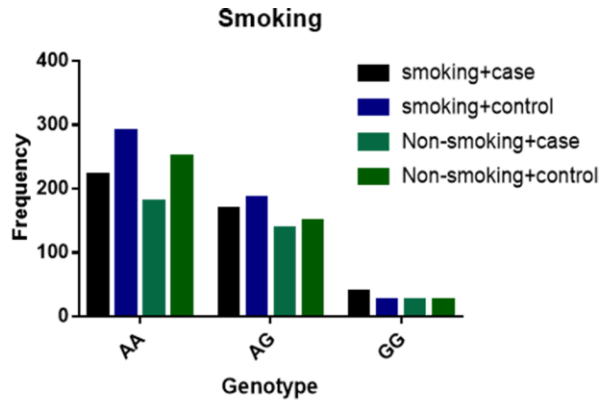
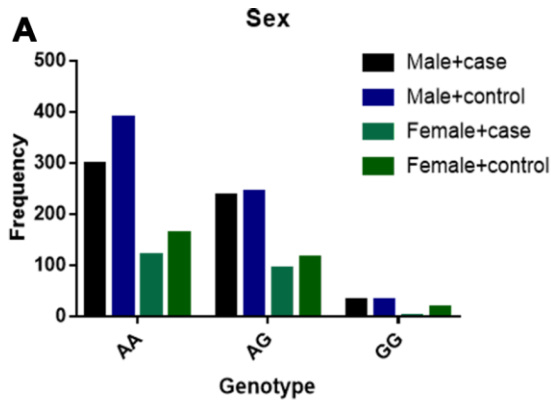
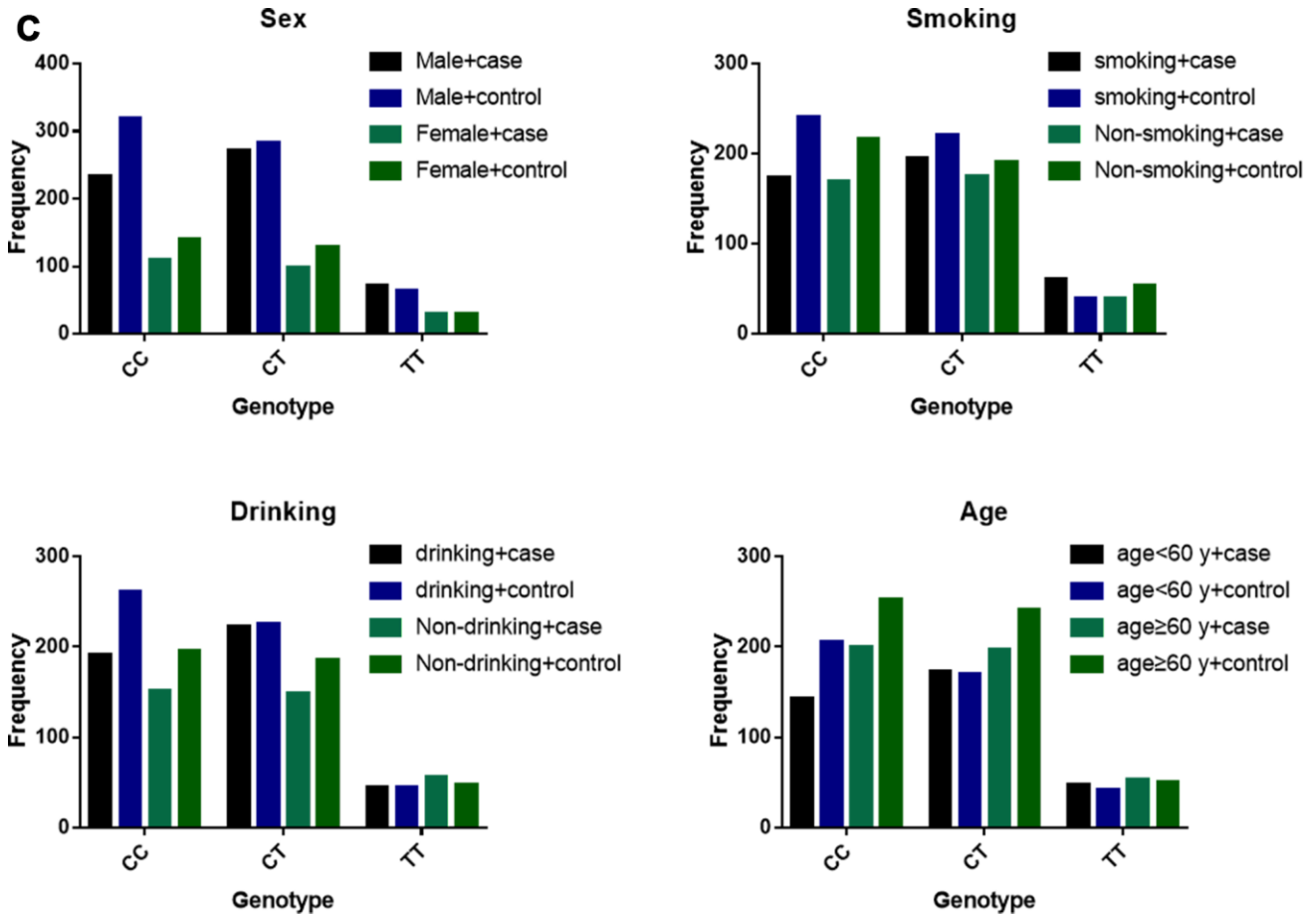


SUPPLEMENTARY FIGURES



Supplementary Figure 1. The genotype numbers of rs10204525, rs7421861, and rs36084323 polymorphisms among esophageal cancer patients and controls.





Supplementary Figure 2. The genotype numbers among different subgroups regarding (A) rs10204525 polymorphism, (B) rs36084323 polymorphism, and (C) rs7421861 polymorphism.