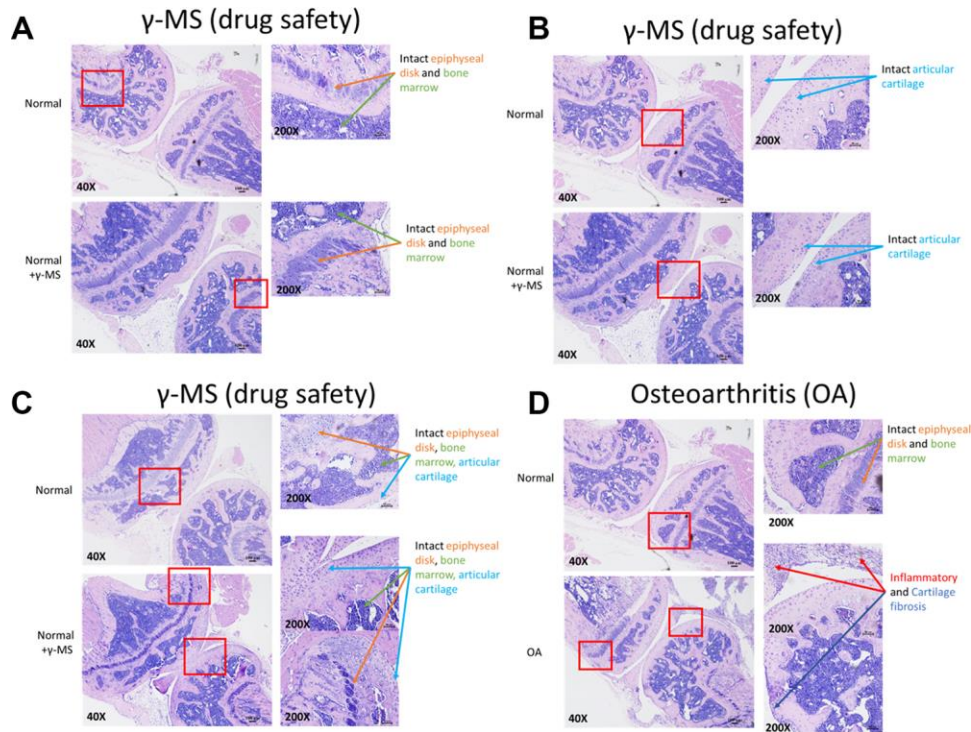
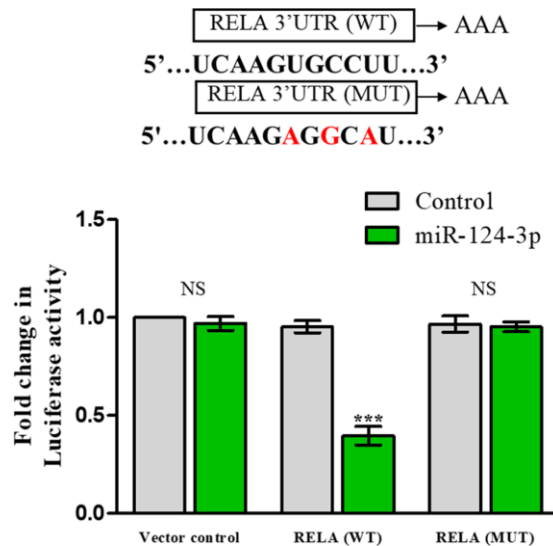


**SUPPLEMENTARY FIGURES**



**Supplementary Figure 1. H & E staining of normal knee control.** (A–D)  $\gamma$ -MS treatment is also not showing any drug side effect in normal mice. There is no difference between the treated and non-treated group tissue (epiphyseal disk and bone marrow). H & E- stained images were taken at 40X (Bar = 100 $\mu$ M) and 200X magnification (Bar = 50 $\mu$ M).



**Suppleemntary Figure 2. Luciferase reporter assay.** The insert demonstrates the sequences of 3'UTR of RELA (WT, wild type) and mutant (MUT, red letters, altered nucleotides) used for demonstrating the direct binding of miR-124-3p with RELA (NF-kB). The luciferase activity was significantly lower when SW982 cells were transfected with RELA (WT) and miR-124-3p, while no difference was observed in both vector control and RELA (MUT). \*\*\*P<0.001; NS, not significant