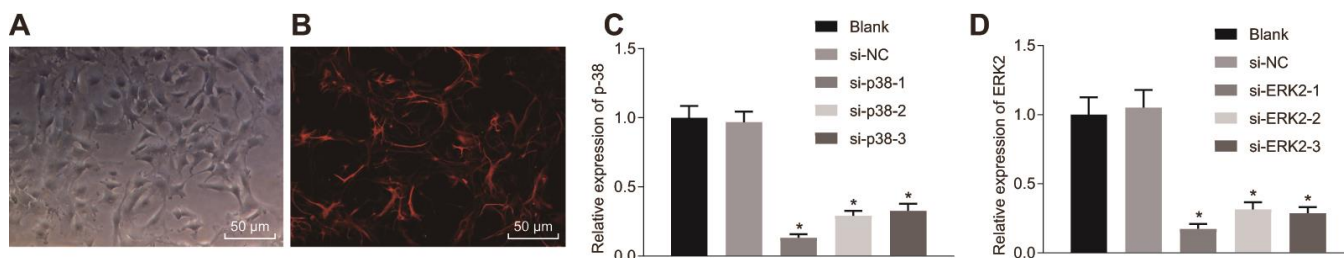
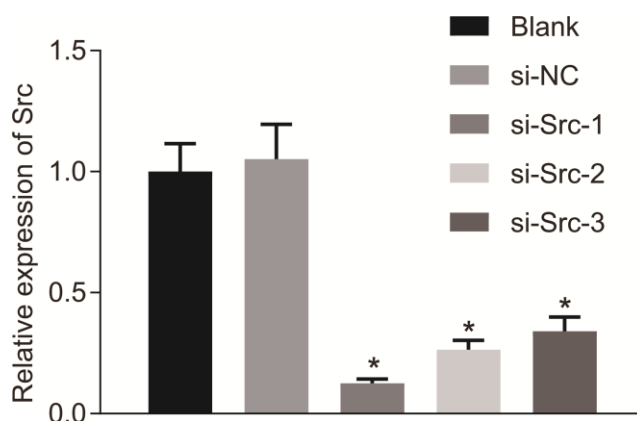


## SUPPLEMENTARY FIGURES



**Supplementary Figure 1. Efficiency of *p38* or *Erk2* knockdown in astrocytes.** (A) the morphological characteristics of astrocytes observed under a microscope ( $\times 200$ ); (B) immunofluorescence analysis of astrocytes ( $\times 200$ ); (C) expression of *p38* in astrocytes detected by RT-q-PCR; (D) expression of *Erk2* in astrocytes detected by RT-q-PCR. Data are expressed as mean  $\pm$  standard deviation and compared using one-way ANOVA, followed by Tukey's post hoc test. \*  $p < 0.05$  vs. cells treated with si-NC. The experiment was repeated 3 times independently.



**Supplementary Figure 2. Efficiency of *Src* knockdown in astrocytes.** Data are expressed as mean  $\pm$  standard deviation and compared using one-way ANOVA, followed by Tukey's post hoc test. \*  $p < 0.05$  vs. cells treated with si-NC. The experiment was repeated 3 times independently.