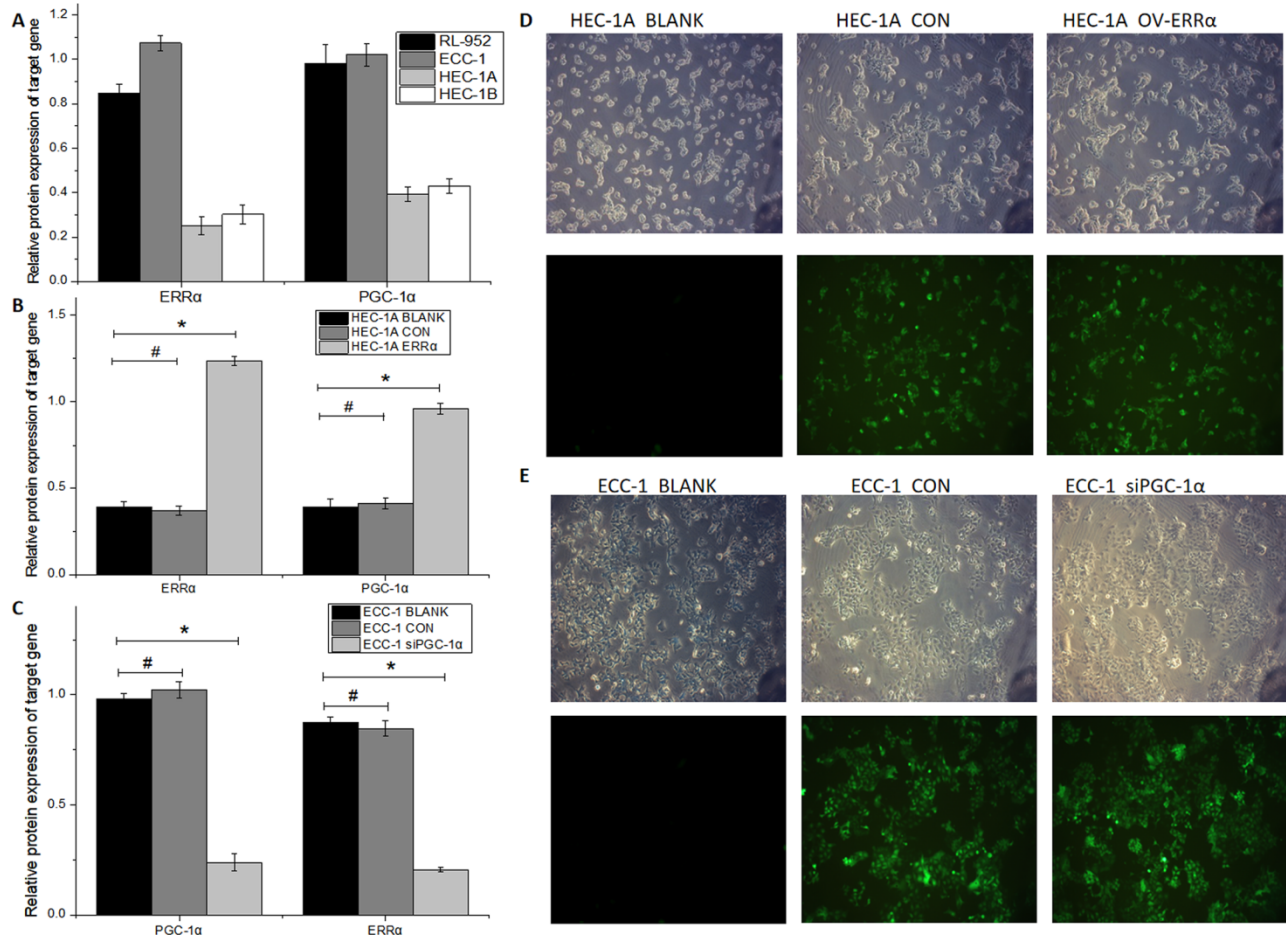
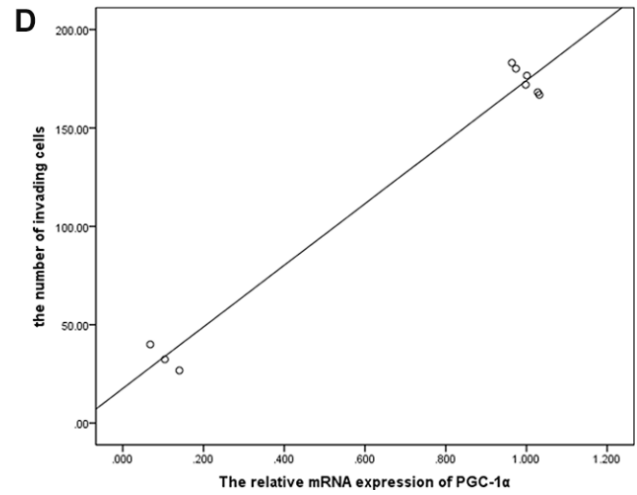
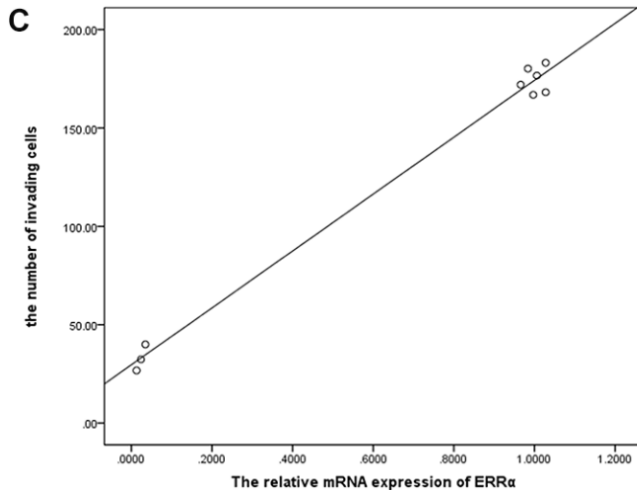
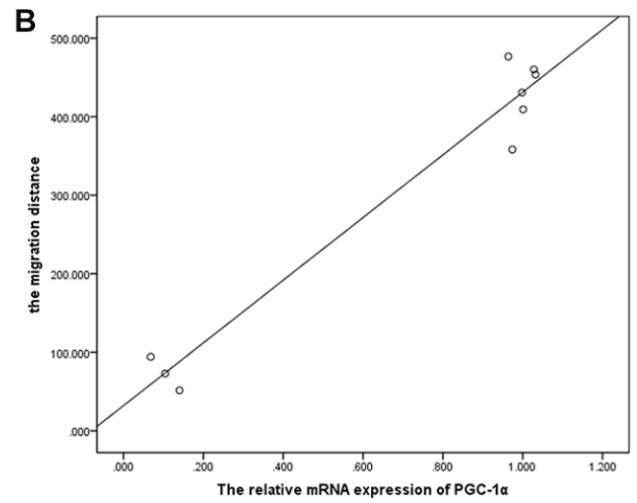
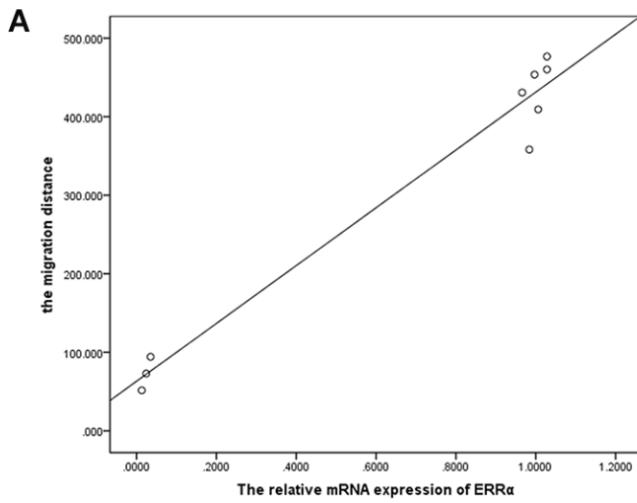


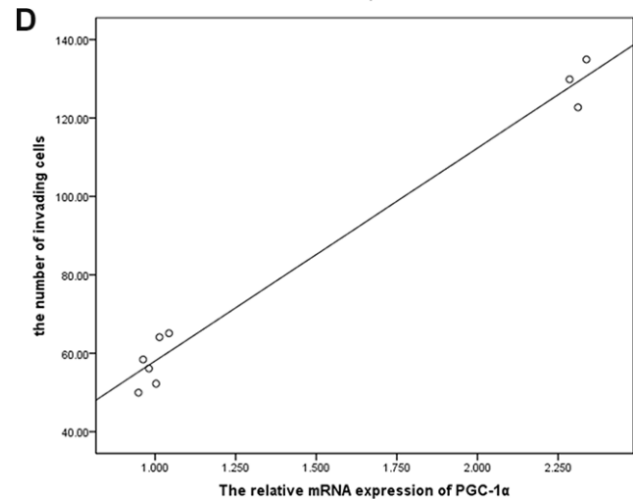
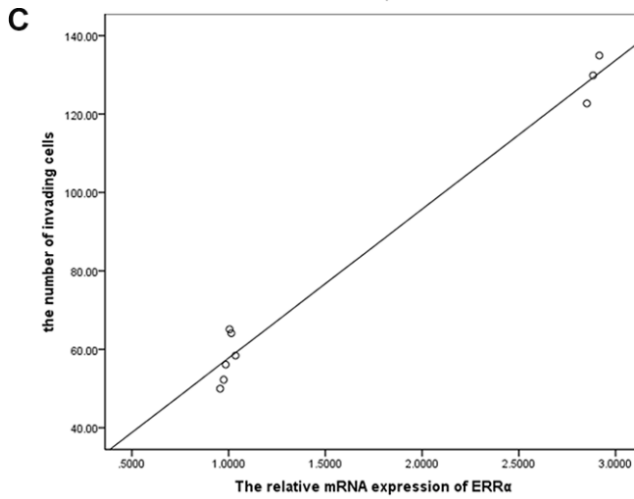
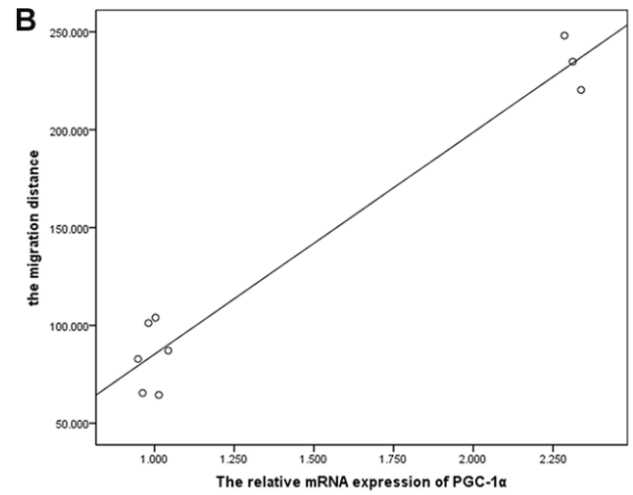
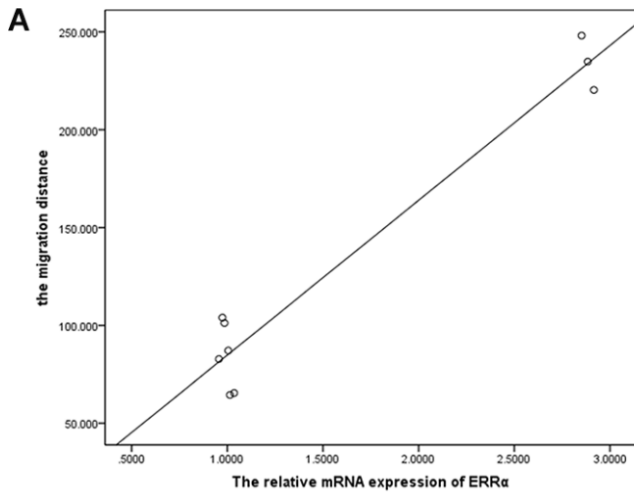
SUPPLEMENTARY FIGURES



Supplementary Figure 1. (A) Quantification data of PGC-1α and ERRα protein expression in RL-952, ECC-1, HEC-1A and HEC-1B endometrial cancer cells. (B) Quantification data of PGC-1α and ERRα protein levels after the infection with lentivirus targeted on OV-ERRα in HEC-1A. (C) Quantification data of PGC-1α and ERRα protein expression after the infection with PGC-1α-siRNA in ECC-1 cell. Infection with lentivirus vector targeted on overexpression of ERRα in HEC-1A (D) and silencing of PGC-1α in ECC-1 (E) were observed by optical microscope and fluorescence microscopic with a magnification of 400. *mean P<0.05, # mean P>0.05



Supplementary Figure 2. Correlation analysis for ERR α (A), PGC-1 α (B) levels and the migration distance after PGC-1 α knockdown in ECC-1. Correlation analysis for ERR α (C), PGC-1 α (D) levels and the number of invading cells after PGC-1 α knockdown in ECC-1.



Supplementary Figure 3. Correlation analysis for ERR α (A), PGC-1 α (B) levels and the migration distance after ERR α overexpression in HEC-1A. Correlation analysis for ERR α (C), PGC-1 α (D) levels and the number of invading cells after ERR α overexpression in HEC-1A.