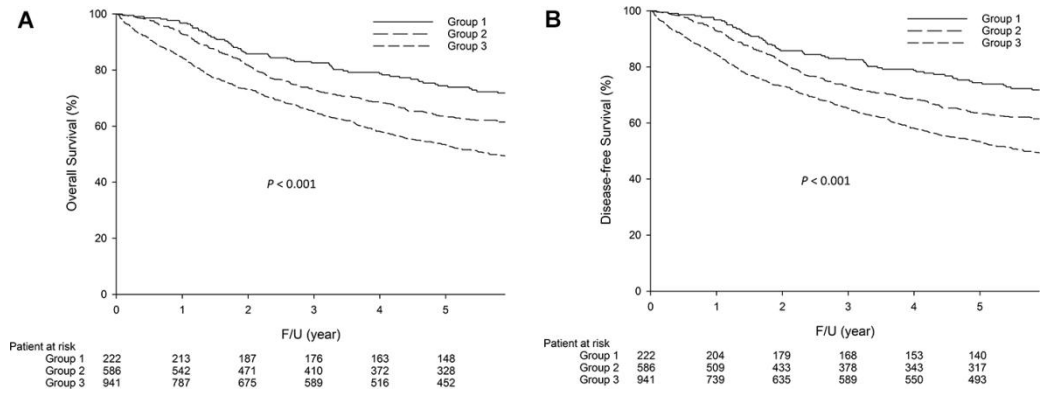
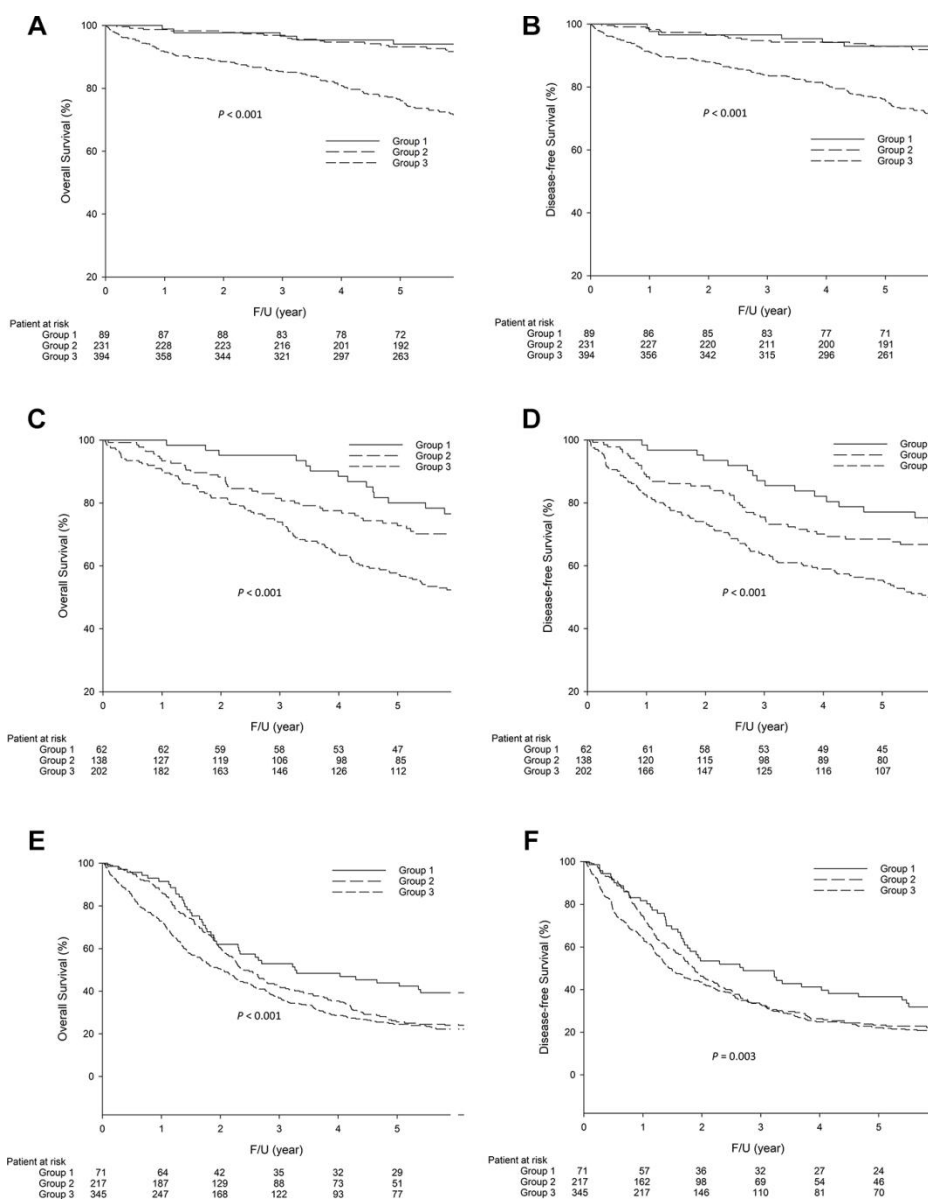


**SUPPLEMENTARY FIGURES**



**Supplementary Figure 1. The 5-year OS (74.4% vs. 63.3% vs. 53.3%, P<0.001) and DFS (70.8% vs. 61.3% vs. 51.7%, P<0.001) rates were significantly higher in group 1 than in groups 2 and 3. The survival curves are shown as follows: (A) OS curves of GC patients. (B) DFS curves of GC patients.**



**Supplementary Figure 2.** For stage I GC, the 5-year OS (94.1% vs. 93.2% vs. 76.1%,  $P < 0.001$ ) and DFS (93.0% vs. 92.9% vs. 75.6%,  $P < 0.001$ ) rates were significantly higher in groups 1 and 2 than in group 3. For stage II GC, the 5-year OS (80.1% vs. 72.8% vs. 57.8%,  $P < 0.001$ ) and DFS (77.1% vs. 68.5% vs. 55.4%,  $P < 0.001$ ) rates were significantly higher in group 1 than in groups 2 and 3. For stage III GC, the 5-year OS (43.9% vs. 25.6% vs. 24.5%,  $P < 0.001$ ) and DFS (36.7% vs. 23.3% vs. 22.1%,  $P = 0.003$ ) rates were significantly higher in group 1 than in groups 2 and 3. The survival curves are shown as follows: (A) OS curves of stage I GC patients. (B) DFS curves of stage I GC patients. (C) OS curves of stage II GC patients. (D) DFS curves of stage II GC patients. (E) OS curves of stage III GC patients. (F) DFS curves of stage III GC patients.