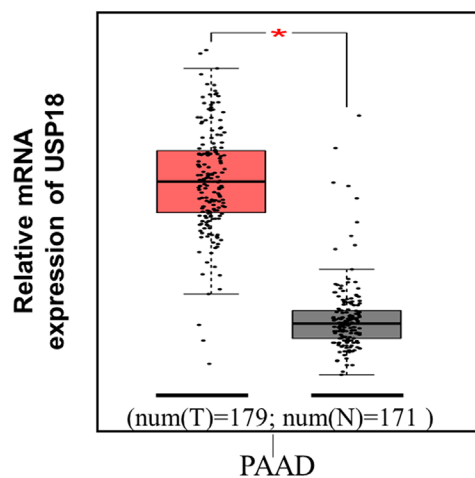
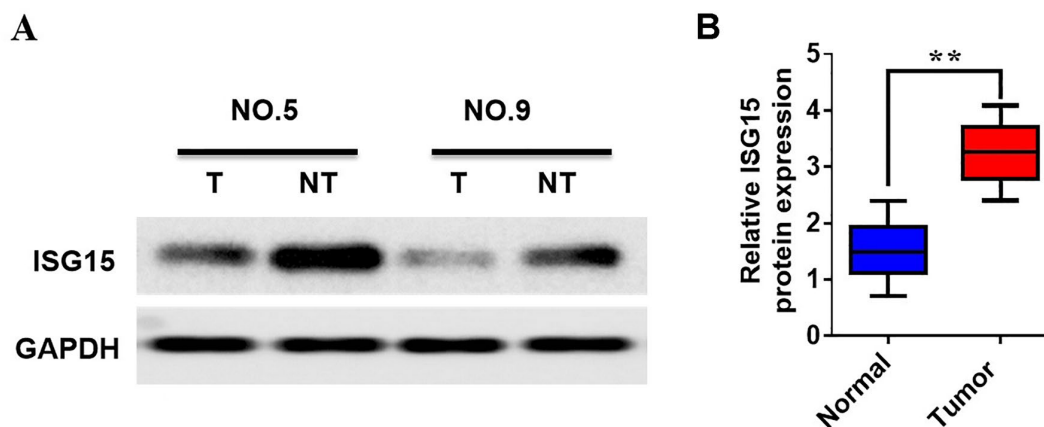


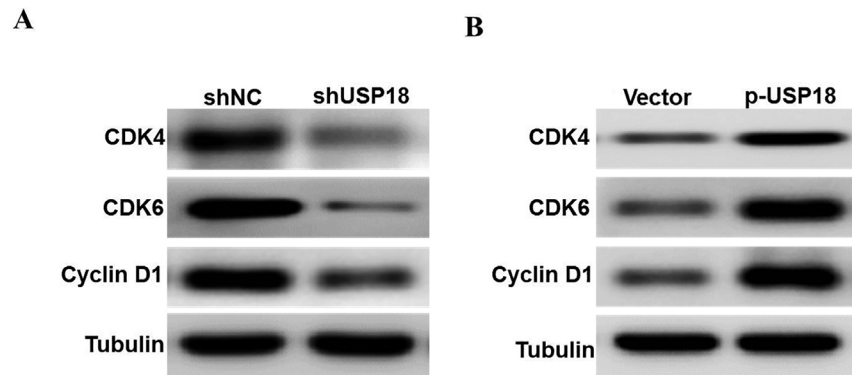
SUPPLEMENTARY FIGURES



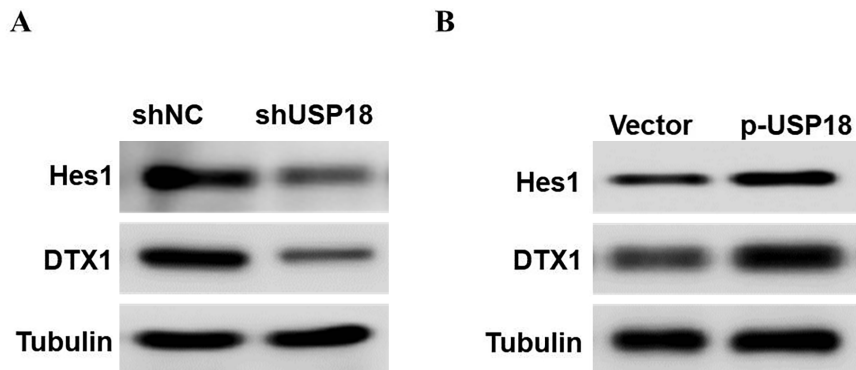
Supplementary Figure 1. The mRNA level of USP18 was upregulated in pancreatic cancer tissues via the Cancer Genome Atlas (TCGA) dataset.



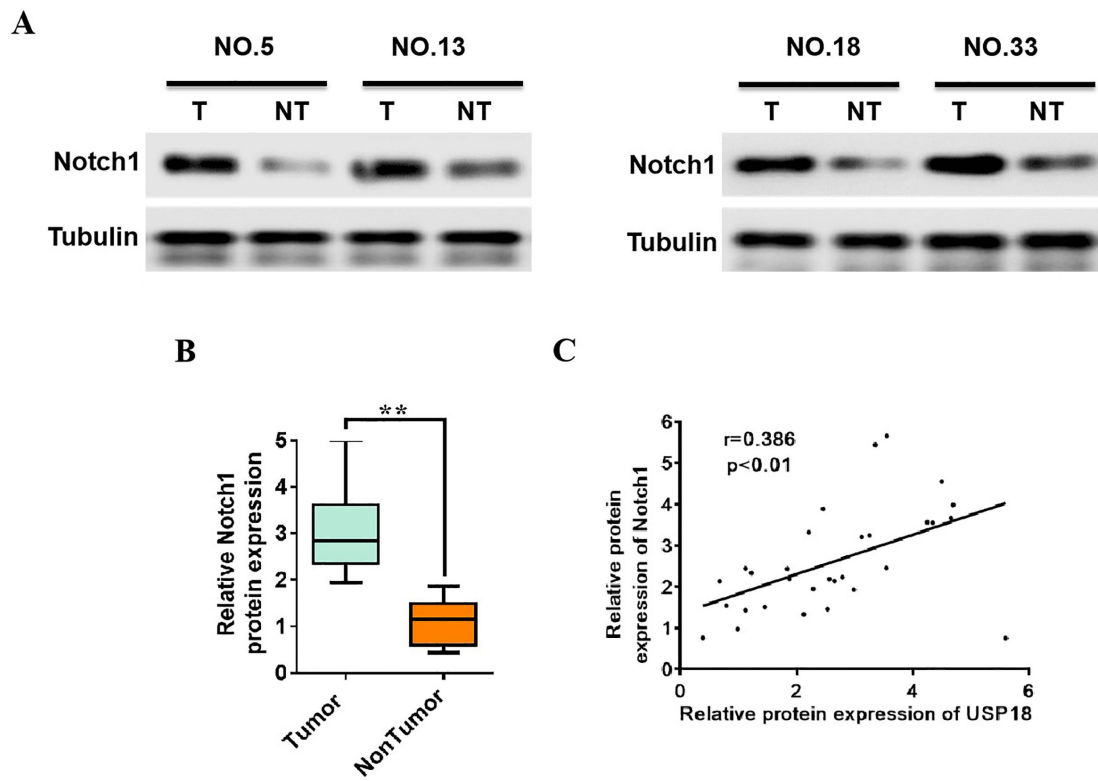
Supplementary Figure 2. (A, B), Relative expression of ISG15 in pancreatic cancer tissues and adjacent non-tumour tissues by western blotting analysis. Statistical differences were analysed using the paired t test. ** $p < 0.01$.



Supplementary Figure 3. (A, B) Western blot analyses were performed to detect the cyclin D1, CDK4 and CDK6 expression levels in USP18 knockdown or overexpressing cells.



Supplementary Figure 4. (A, B) Western blot analyses were performed to detect the Hes1 and DTX1 expression levels in USP18 knockdown or overexpressing cells.



Supplementary Figure 5. (A, B), Determination and quantification of Notch1 protein levels in pancreatic cancer tissues and paired non-tumour tissues by western blotting. Tubulin served as a loading control. (C) Scatter plots of USP18 and Notch1 protein expression in pancreatic cancer.