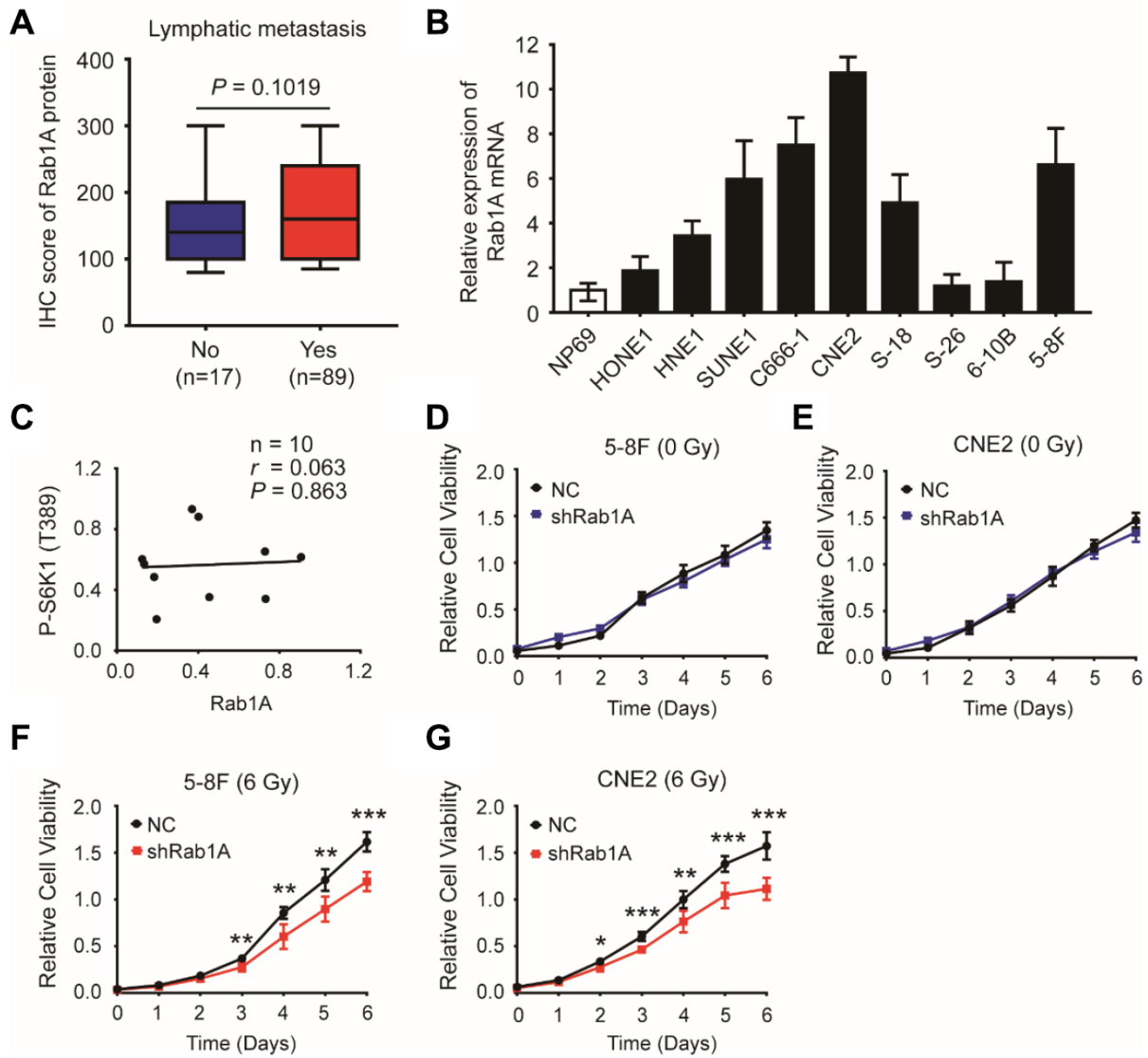
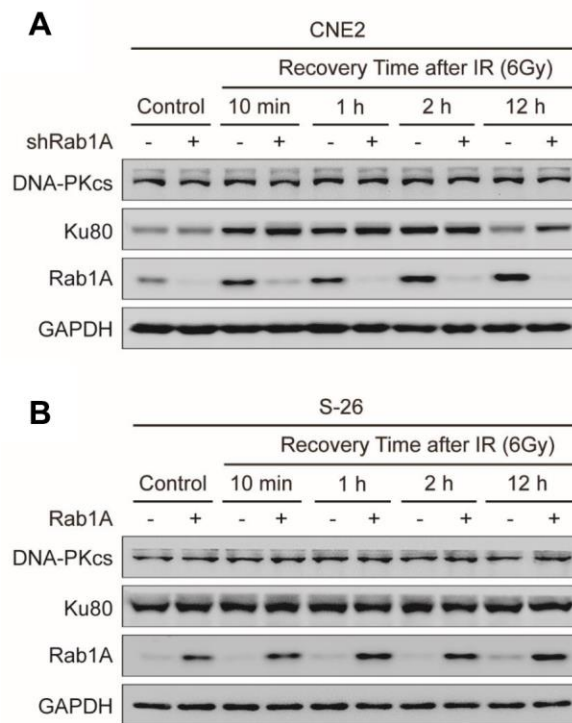


**SUPPLEMENTARY FIGURES**



**Supplementary Figure 1.** (A) The expression of Rab1A protein in NPC patients with/without lymphatic metastasis. (B) Relative expression of Rab1A (normalized to GAPDH) in a panel of NPC cell lines and one human nasopharyngeal normal epithelium cell line NP69 was examined by RT-PCR. (C) The correlation between Rab1A and P-S6K1(T389) proteins in NPC cell lines was assessed by Spearman correlation assay. (D and E) CCK8 assay of 5-8F and CNE2 cells after knockdown of Rab1A before IR. (F and G) CCK8 assay were used to observe the effect of Rab1A knockdown on 5-8F and CNE2 cells proliferation after 6 Gy of irradiation as a single dose. Error bars: mean  $\pm$  SD from three independent experiments. \*  $P < 0.05$ , \*\*  $P < 0.01$ , \*\*\*  $P < 0.001$ .



**Supplementary Figure 2.** (A and B) Western blotting analysis of representative proteins of NHEJ pathway-related proteins (Ku80 and DNA-PKcs) in the four groups of CNE2 and S-26 cells treated with or without 6 Gy of irradiation. GAPDH was used as a loading control. The results showed that a aberrant expression of Rab1A did not affect the expressions of Ku80 and DNA-PKcs proteins in CNE2 or S-26 cells treated with/without radiation.