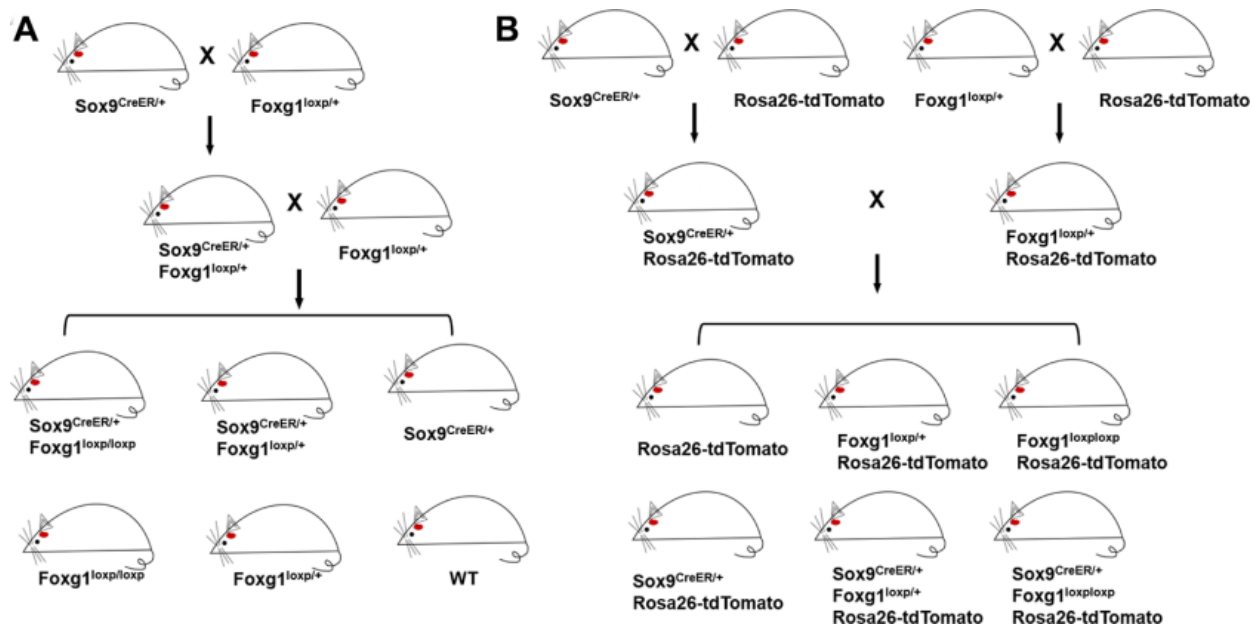
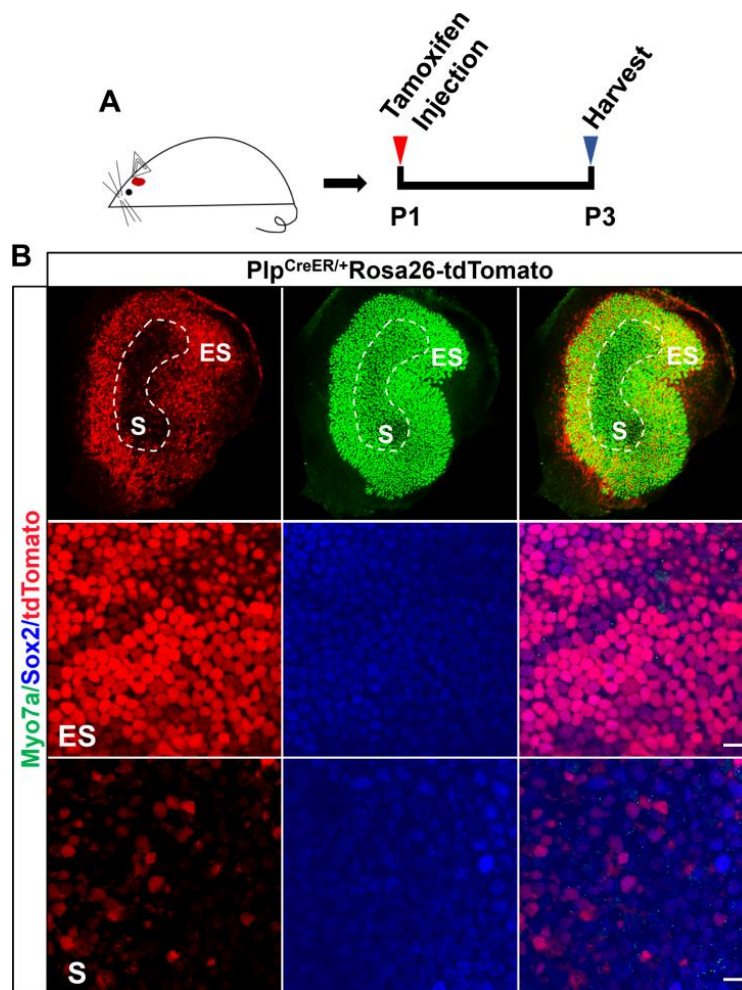


SUPPLEMENTARY FIGURES



Supplementary Figure 1. The mouse breeding strategy. (A) Breeding strategy for Sox9^{CreER/+}Foxg1^{loxpi/loxpi} mice. (B) Breeding strategy for Sox9^{CreER/+}Foxg1^{loxpi/loxpi}Rosa26-tdTomato mice.



Supplementary Figure 2. Expression of Plp and Sox2 in the neonatal mouse utricule. (A) Tamoxifen was i.p. injected into P1 Plp9^{CreER/+}Rosa26-tdTomato mice to activate the Cre enzyme, and the mice were sacrificed at P3. (B) Lineage tracing images of Plp+ SCs (red) in Plp9^{CreER/+}Rosa26-tdTomato mice. Myo7a (green) and Sox2 (blue) were used as HC and SC markers, respectively. For all experiments, the scale bar at high magnification is 10 μ m.