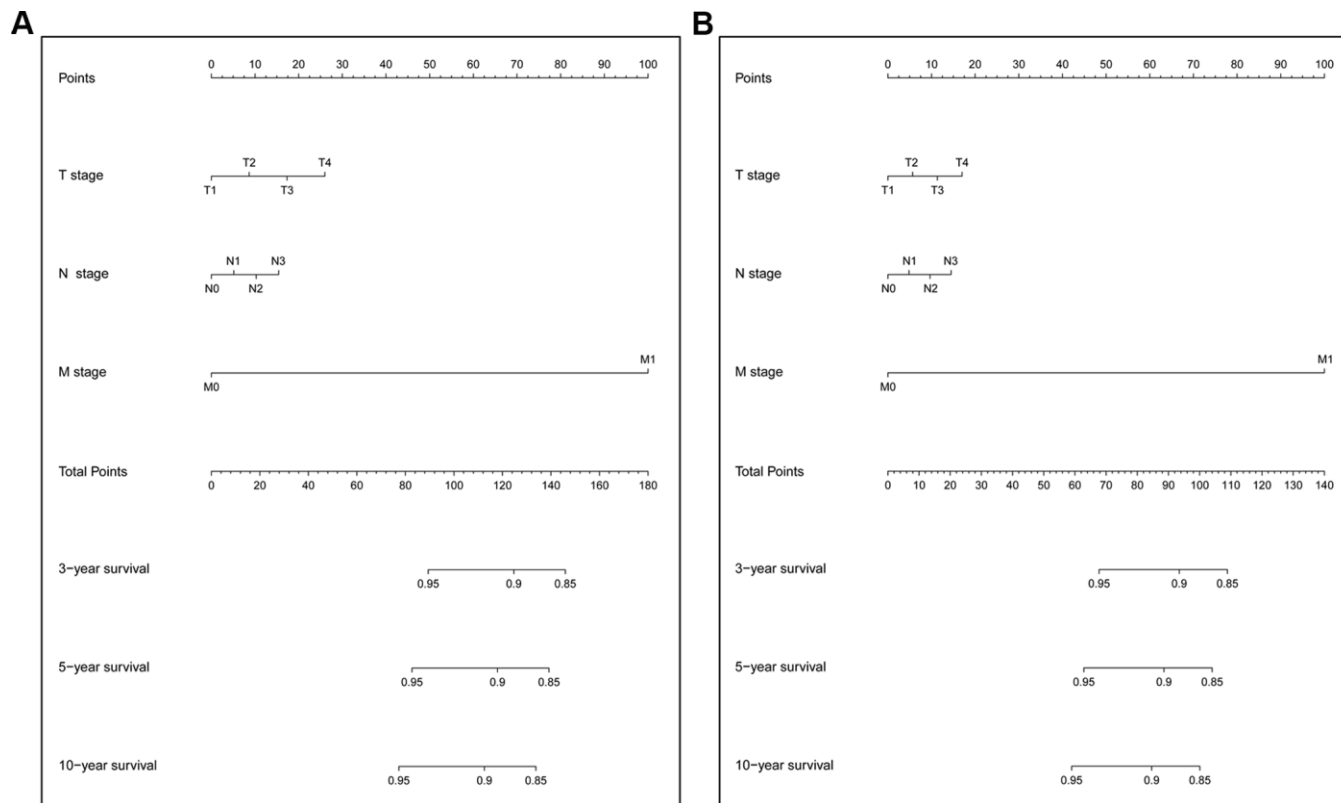
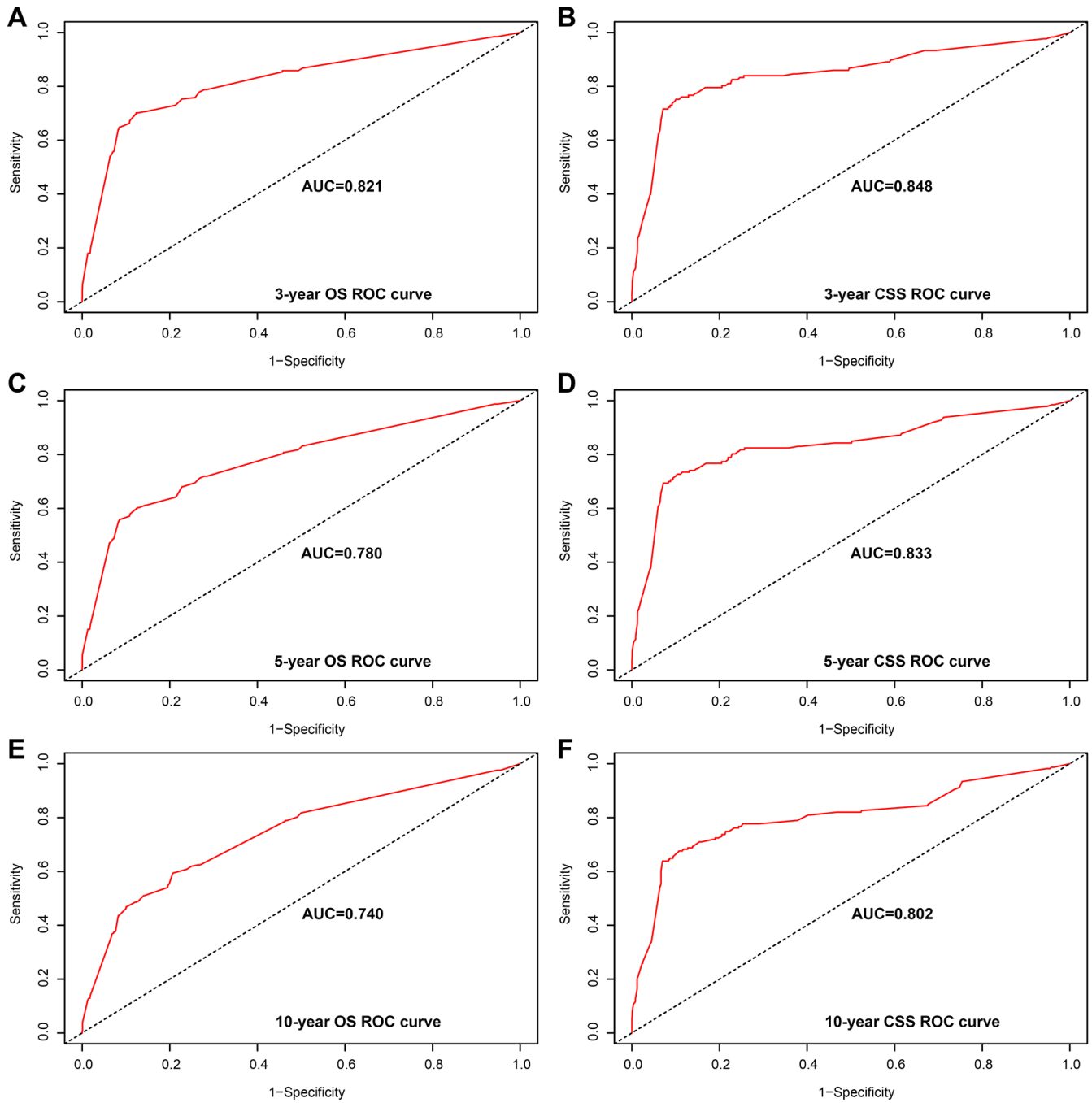


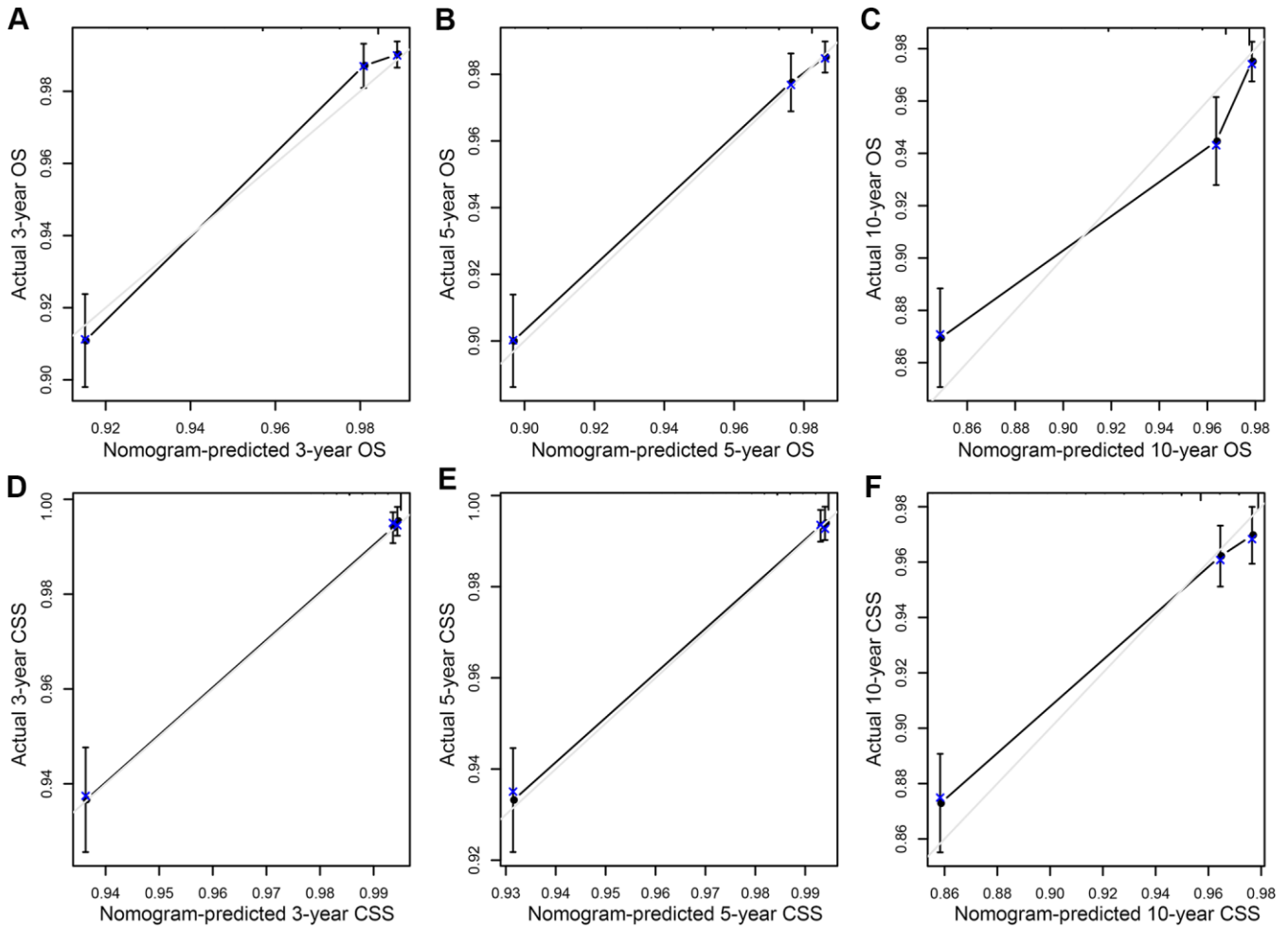
Supplementary Figures



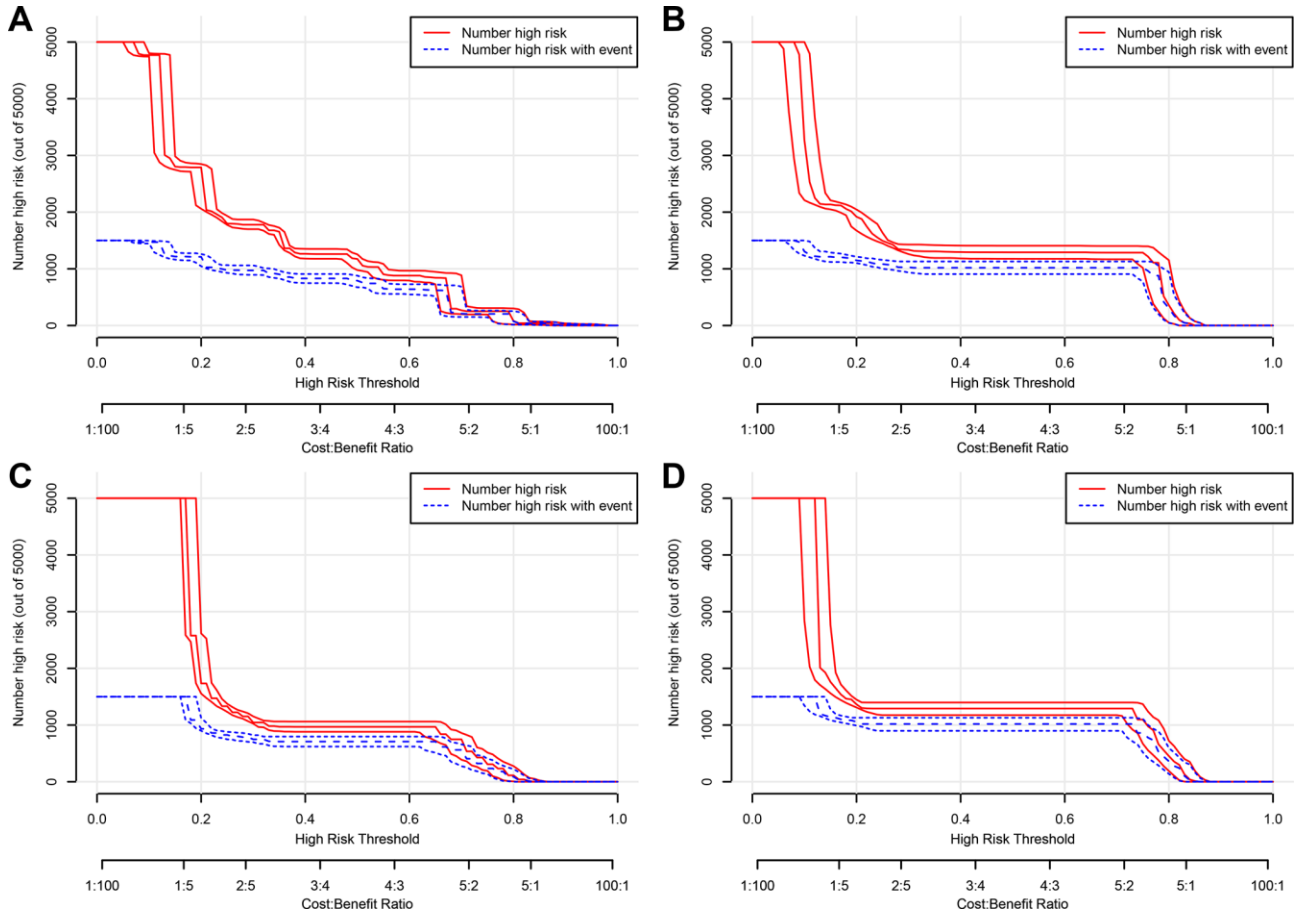
Supplementary Figure 1. TNM stage nomogram predicting 3-, 5-, and 10-year overall survival (OS) and cancer-specific survival (CSS) rate of GCTC patients. (A) OS nomogram; (B) CSS nomogram.



Supplementary Figure 2. Area under the curve (AUC) value of the receiver operating characteristic (ROC) predicting in the validation cohort. (A) 3-year overall survival (OS) rates. (B) 3-year cancer-specific survival (CSS) rates. (C) 5-year OS rates. (D) 5-year CSS rates. (E) 10-year OS rates. (F) 10-year CSS rates.



Supplementary Figure 3. Calibration plot of the nomogram for predicting 3-, 5-, and 10-year overall survival (OS) and cancer-specific survival (CSS) in validation cohort. (A) 3-year OS; (B) 5-year OS; (C) 10-year OS; (D) 3-year CSS; (E) 5-year CSS; (F) 10-year CSS.



Supplementary Figure 4. Clinical impact curve (CIC) detects the predictive value of two nomograms in GCTC prognosis in the validation cohort. (A) The overall survival (OS) of the nomogram. (B) The OS of the TNM stage. (C) The cancer-specific survival (CSS) of the nomogram. (D) The CSS of the TNM stage.