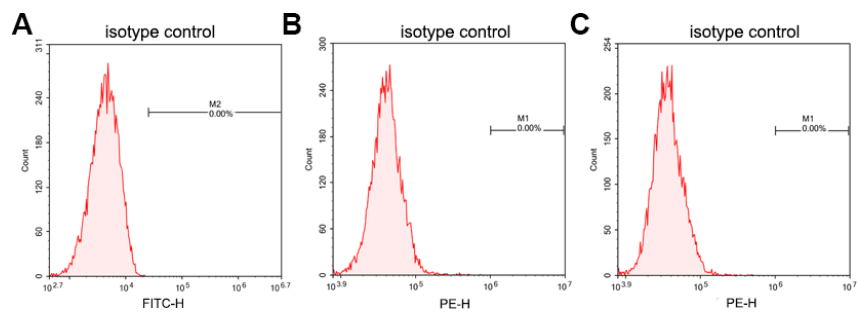
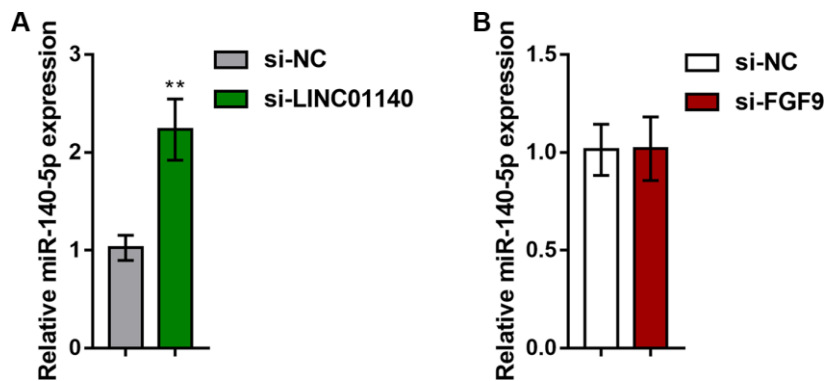


## SUPPLEMENTARY FIGURES



**Supplementary Figure 1. Isotype control for flow cytometry.** (A) Rat IgG isotype control-FITC (ab136125); (B) Rabbit IgG isotype control -PE (ab209478). (C) Mouse IgG isotype control-PE (ab154457).



**Supplementary Figure 2. Relevance of miR-140-5p to LINC01140 and FGF9.** (A) The levels of miR-140-5p in response to LINC01140 knockdown; (B) The levels of miR-140-5p in response to FGF9 knockdown in bladder cancer cells.