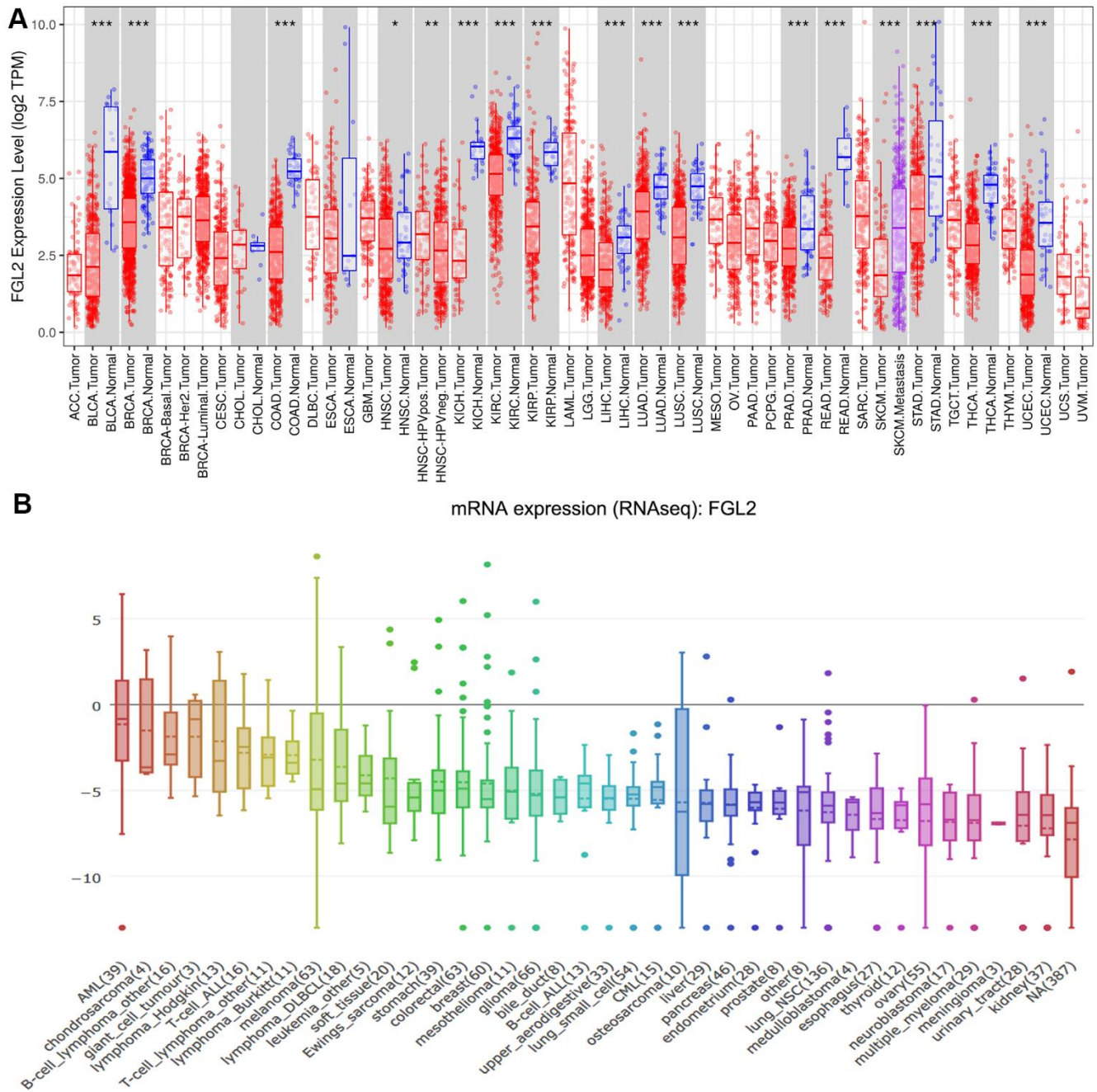
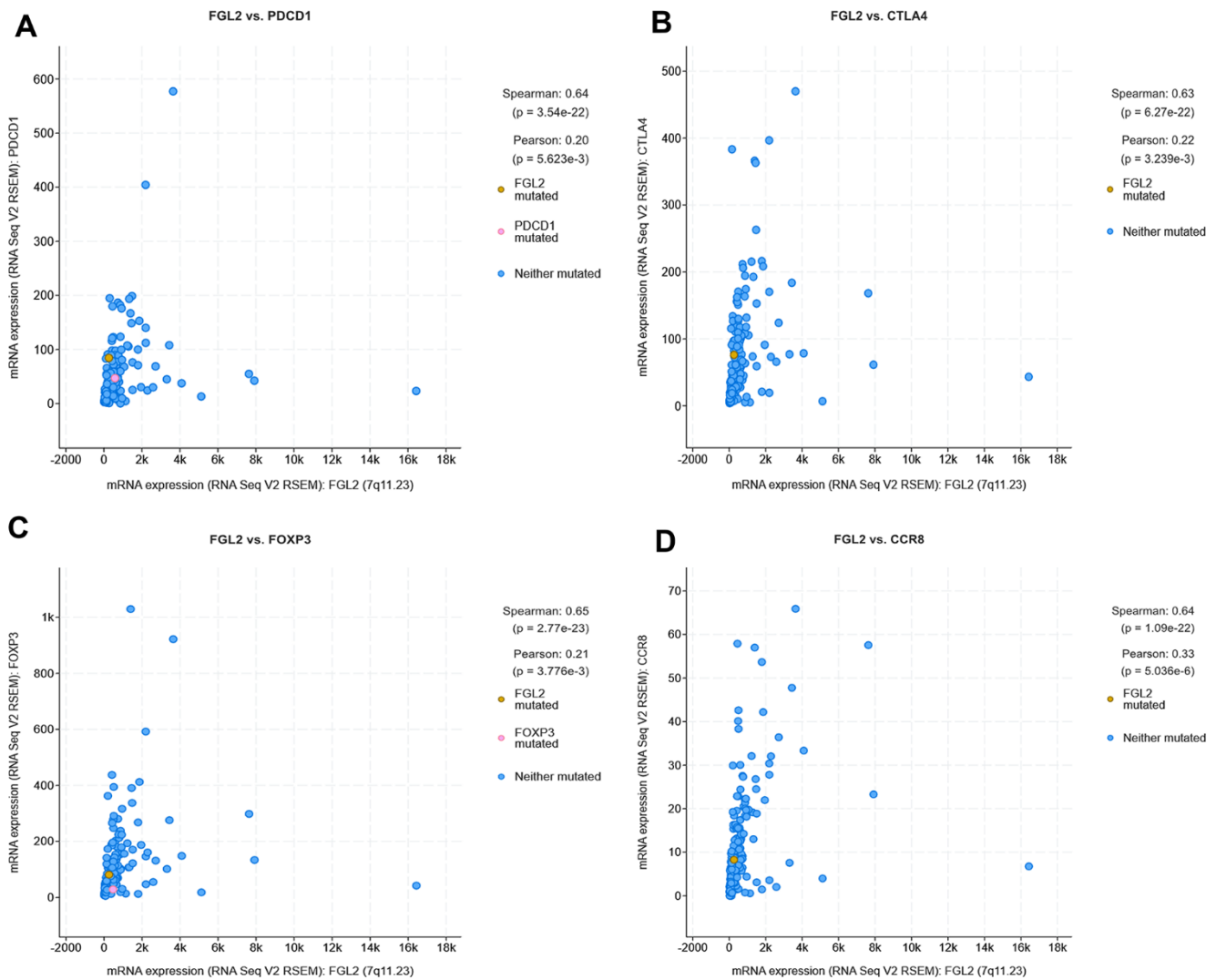


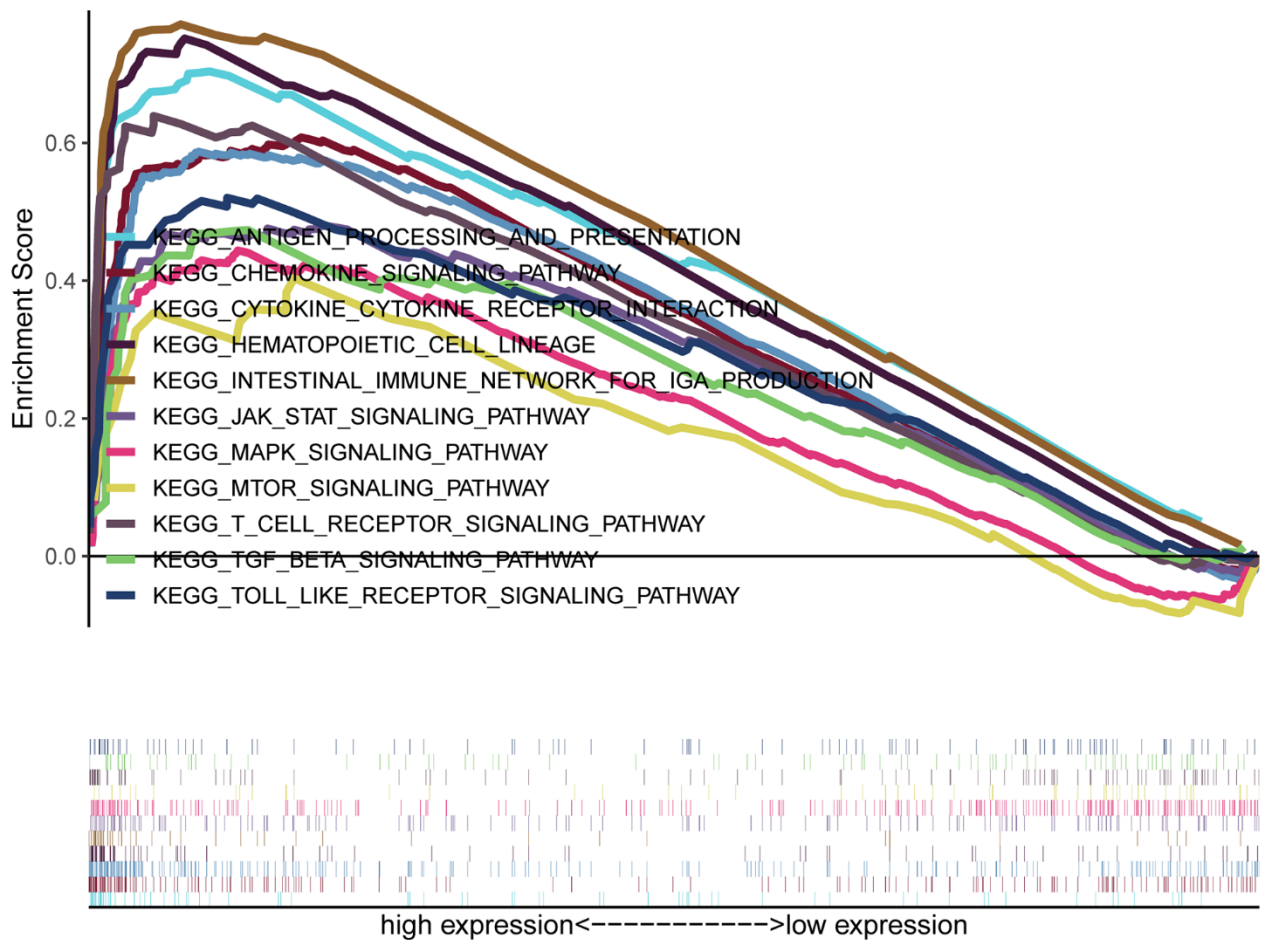
SUPPLEMENTARY FIGURES



Supplementary Figure 1. FGL2 levels in tumor tissues and cell lines. (A) Human *FGL2* levels in different tumor types from TCGA were determined using TIMER (*P < 0.05, **P < 0.01, ***P < 0.001). (B) *FGL2* mRNA levels in cancer cell lines were determined using the Cancer Cell Line Encyclopedia.



Supplementary Figure 2. Correlation analysis between the levels of *FGL2* and genetic markers in ESCA using cBioPortal. (A–D) Scatterplots depicting the correlations between the levels of *FGL2* and *PD-1* (A), *CTLA4* (B), *FOXP3* (C) and *CCR8* (D). A Spearman’s $P < 0.05$ was considered statistically significant.



Supplementary Figure 3. GSEA results based on *FGL2* expression in ESCA samples from TCGA.