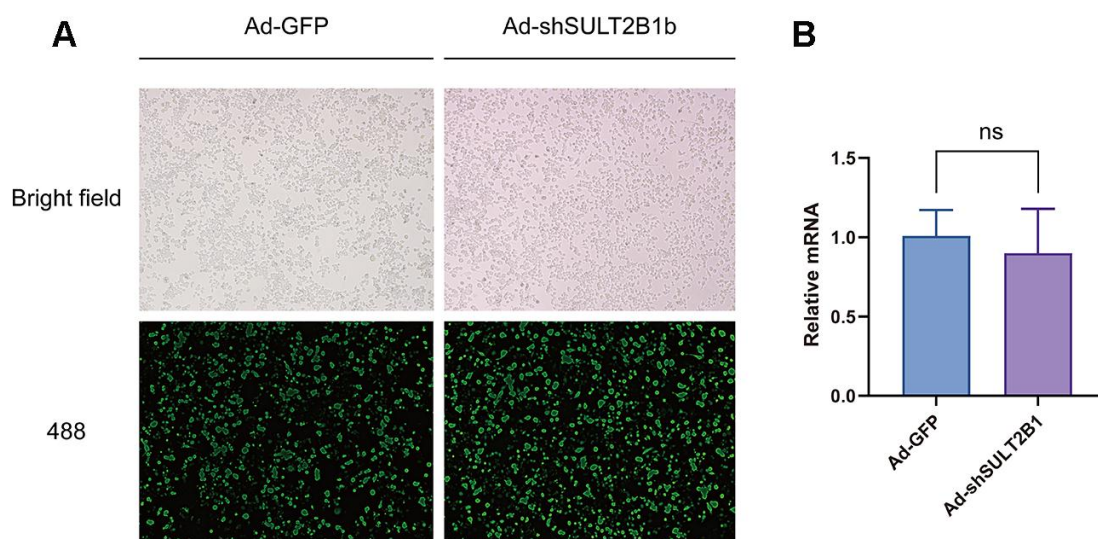
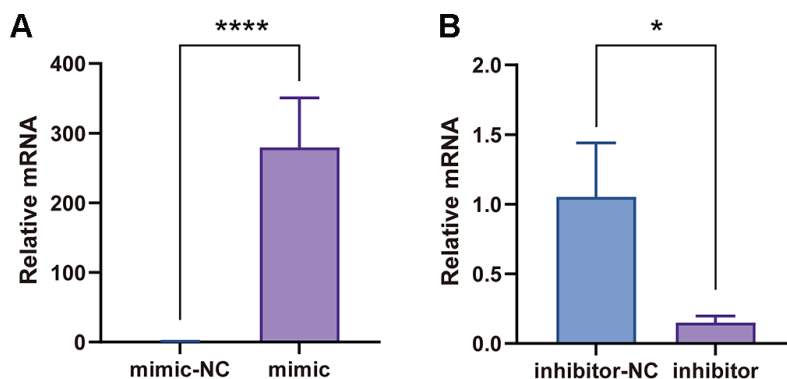


SUPPLEMENTARY FIGURES



Supplementary Figure 1. Successful transfection of Ad-GFP and Ad-shSULT2B1-GFP into macrophages. Raw264.7 cells were transfected with Ad-GFP and Ad-shSULT2B1-GFP, respectively. (A) After 24h of transfection, the fluorescent intensity was monitored by inverted fluorescence microscopy. (B) The expression of GFP mRNA was determined by RT-qPCR. Data are shown as mean±SD (n=3). **p<0.01, ***p<0.001.



Supplementary Figure 2. The effects of mimic and inhibitor of miR148a-3p on expression level of miR148a-3p in macrophages. (A, B) The expression of miR148a-3p were significantly increased or decreased after transfection with miR148a-3p mimic (A) and inhibitor (B), respectively. Data are shown as mean±SD (n=3). **p<0.01, ***p<0.001.