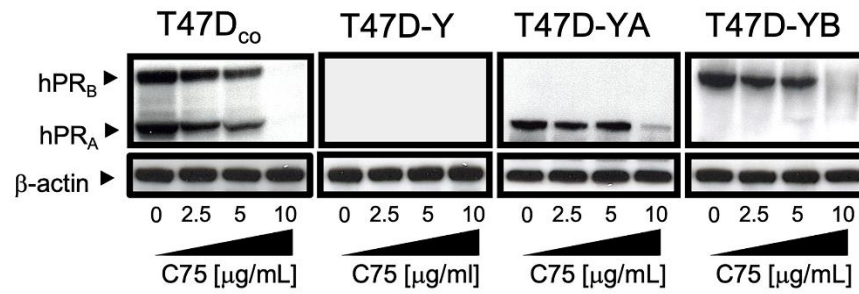


SUPPLEMENTARY FIGURE



Supplementary Figure 1. Effects of FASN inhibition on expression of progesterone receptor isoforms. Immunoblotting of PR-A and PR-B proteins in T47D_{co}, T47D-Y, T47D-YA and T47D-YB breast cancer cell lines cultured in the absence or presence of graded concentrations of C75. β-actin was used to control for protein loading and transfer.