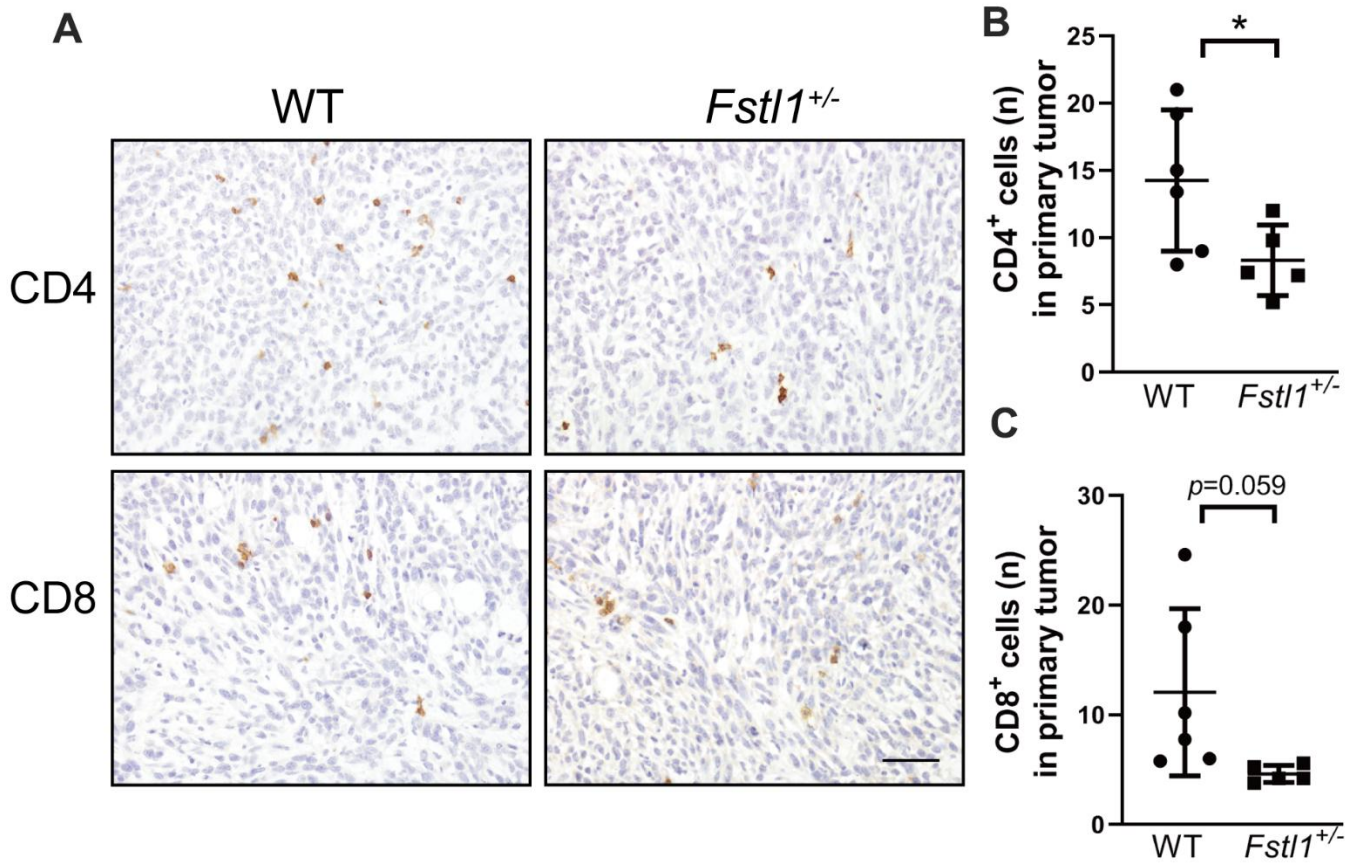
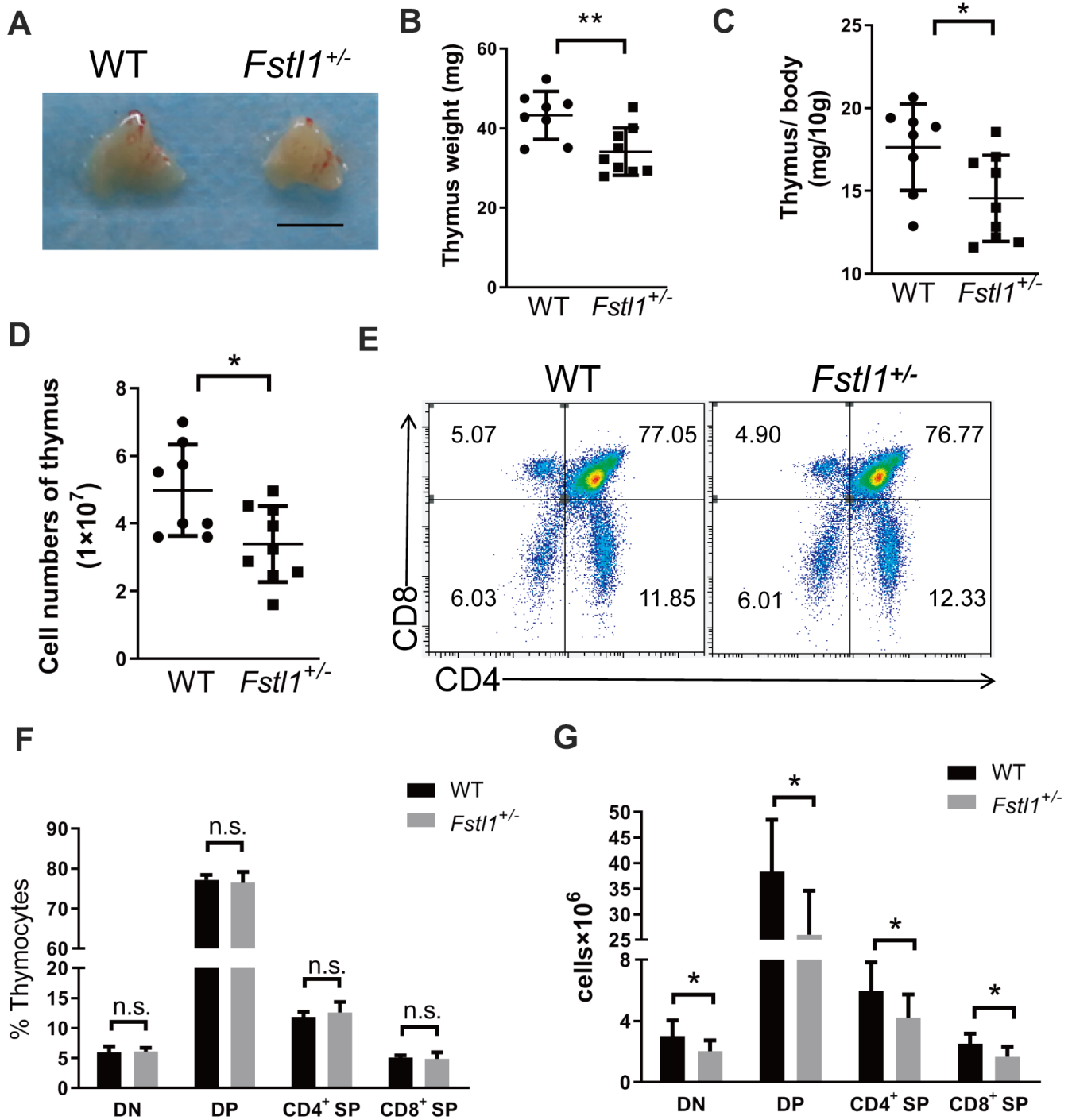


SUPPLEMENTARY FIGURES



Supplementary Figure 1. *Fstl1*^{+/-} mice exhibited significant reduction in CD4⁺ T cells in the primary tumor. (A) Representative IHC staining of CD4 and CD8 T cells in primary tumor from WT and *Fstl1*^{+/-} mice. Scale bar, 40 μm. (B) The numbers of CD4 positive cells in the primary tumor (n=6, WT; n=5, *Fstl1*^{+/-}). (C) The numbers of CD8 positive cells in the primary tumor (n=6, WT; n=5, *Fstl1*^{+/-}). Data are presented as mean ± SD. Each dot in the graphs represents an individual mouse. **p* < 0.05.



Supplementary Figure 2. *Fstl1*^{+/-} tumor-bearing mice exhibited significant reduction in thymus size and thymocyte numbers. (A) Representative images of thymuses from tumor-bearing WT and *Fstl1*^{+/-} mice. Scale bar, 5 mm. (B, C) Thymus weight and index of tumor-bearing WT and *Fstl1*^{+/-} mice (n=8, WT; n=9, *Fstl1*^{+/-}). (D) Total thymocyte numbers were counted from tumor-bearing WT and *Fstl1*^{+/-} mice (n=8, WT; n=9, *Fstl1*^{+/-}). (E) Representative flow cytometry profiles presenting the proportions of DN, DP, CD4⁺ SP and CD8⁺ SP thymocytes from the thymuses of WT and *Fstl1*^{+/-} tumor-bearing mice. (F) Quantification of the proportions of DN, DP, CD4⁺ SP and CD8⁺ SP thymocytes within the gated live cells in the thymuses of WT and *Fstl1*^{+/-} tumor-bearing mice (n=8, WT; n=9, *Fstl1*^{+/-}). (G) The numbers of DN, DP, CD4⁺ SP and CD8⁺ SP thymocytes (n=8, WT; n=9, *Fstl1*^{+/-}). Data are presented as mean ± SD. Each dot in the graphs represents an individual mouse. n.s., not significant; *p < 0.05, **p < 0.01.