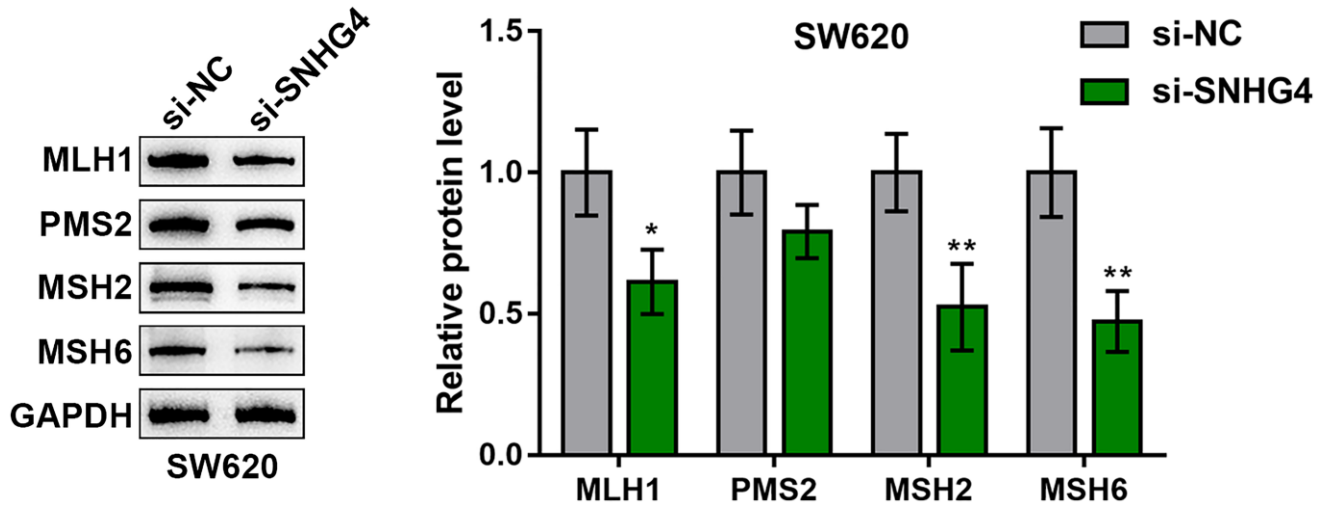
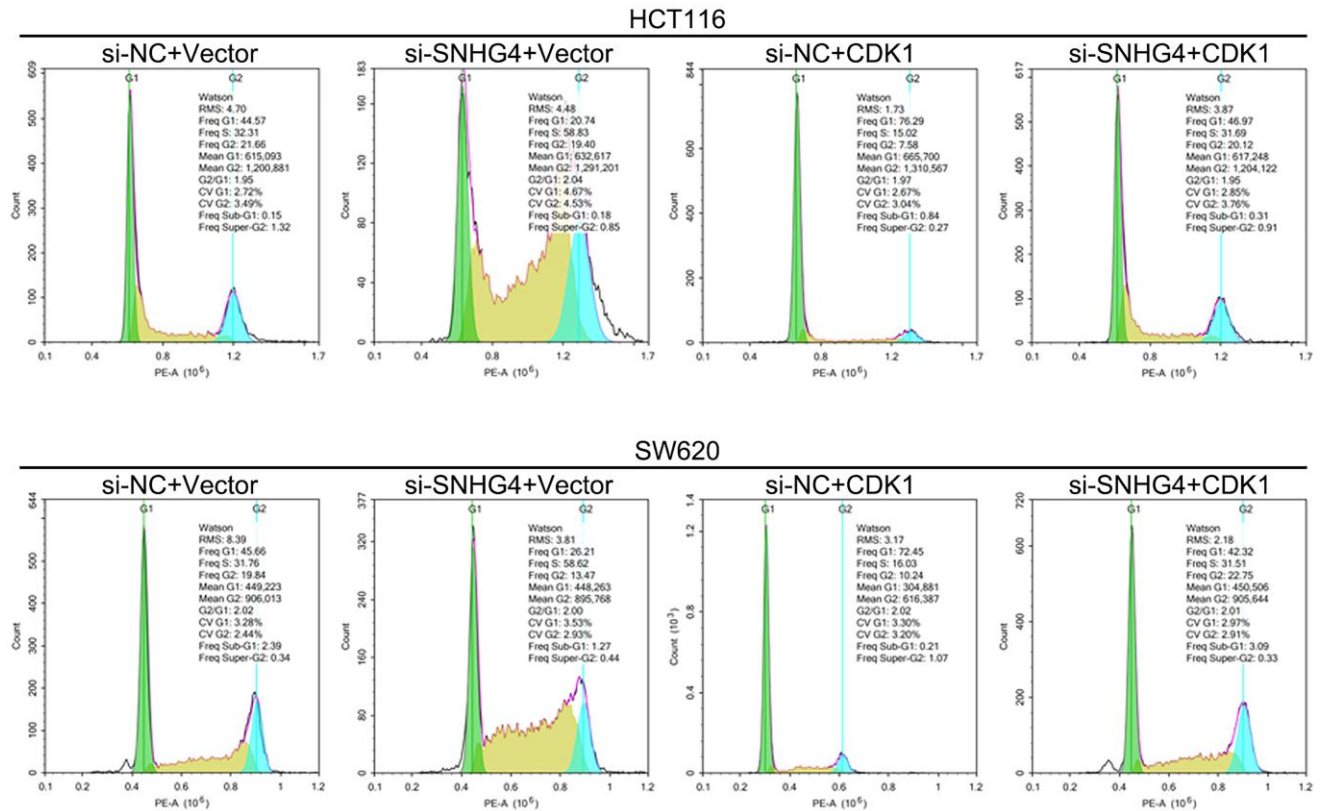


SUPPLEMENTARY FIGURES



Supplementary Figure 1. Effects of SNHG4 on CRC cell microsatellite stability. SW620 cells were transfected with si-SNHG4, and microsatellite stability-related proteins (MLH1, PMS2, MSH2, and MSH6) were detected by immunoblotting assay. * $P < 0.05$, ** $P < 0.01$, compared to si-NC group.



Supplementary Figure 2. The effect of SNHG4 and CDK1 on the CRC cell cycle. HCT116 and SW620 cells were transfected with si-SNHG4 and/or CDK1 overexpression vector, and cell cycle progression was examined by flow cytometry.