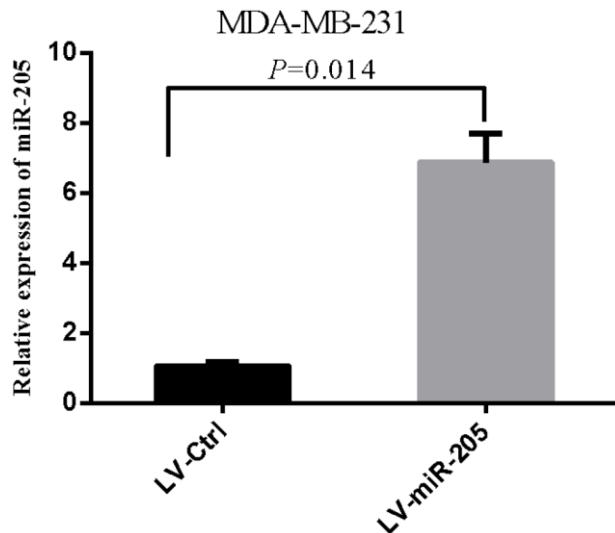
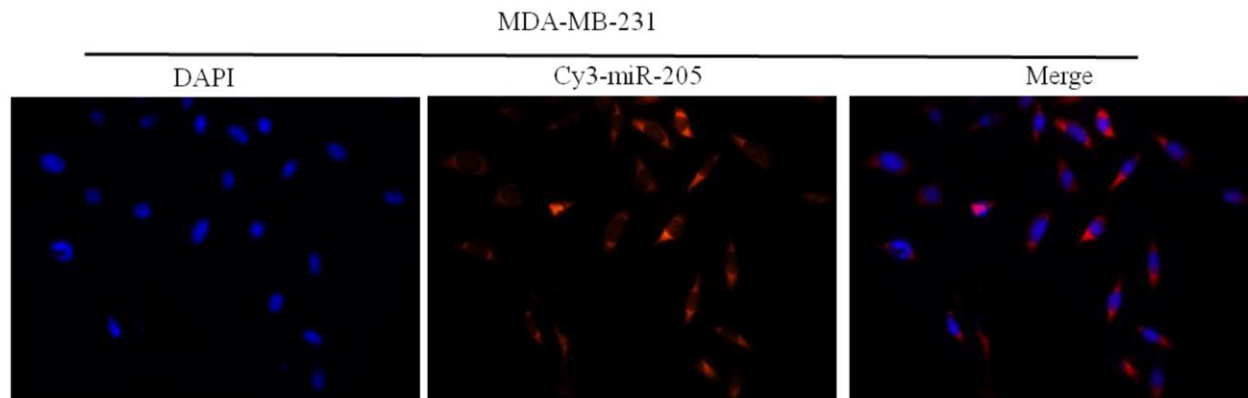


## SUPPLEMENTARY FIGURES



Supplementary Figure 1. miR-205 expression levels were significantly over-expressed in breast cancer cells MDA-MB-231 infected with lentivirus-miR-205.



Supplementary Figure 2. FISH was used to detect miR-205 location in breast cancer cells MDA-MB-231. blue, DAPI; Red, miR-205.