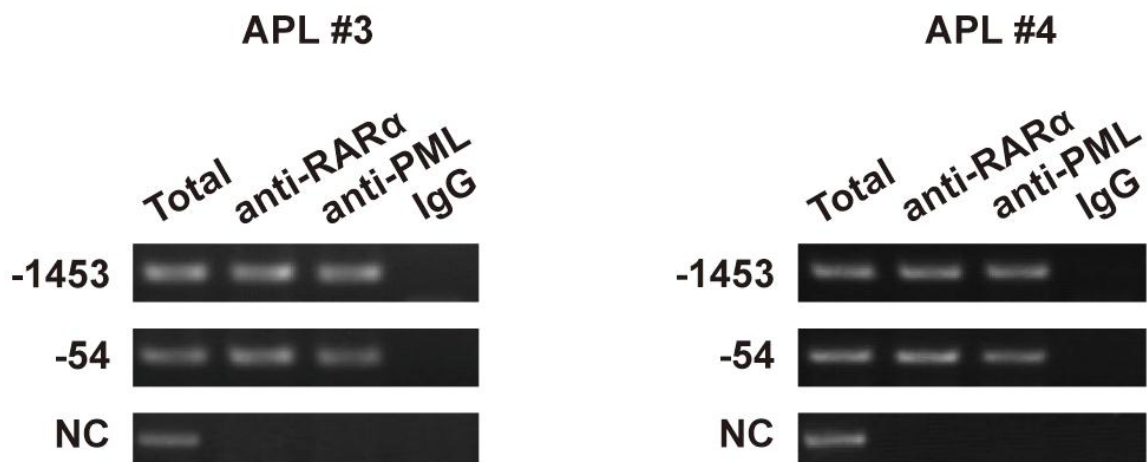


SUPPLEMENTARY FIGURE



Supplementary Figure 1. ChIP assays were conducted in bone marrow cells from two APL patients with anti-PML, anti-RAR $\alpha$ , or nonspecific (IgG) antibodies. Total input and immunoprecipitated DNA were analyzed by PCR using primers around -1453 and -54 sites.