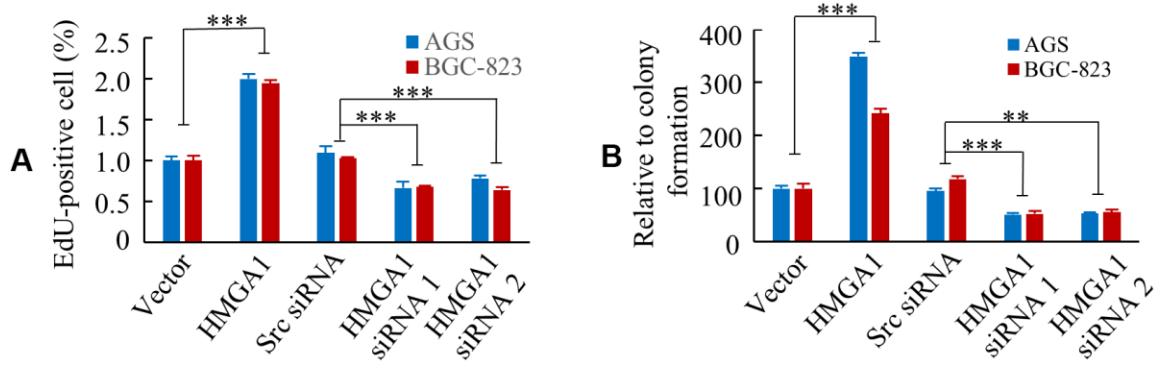
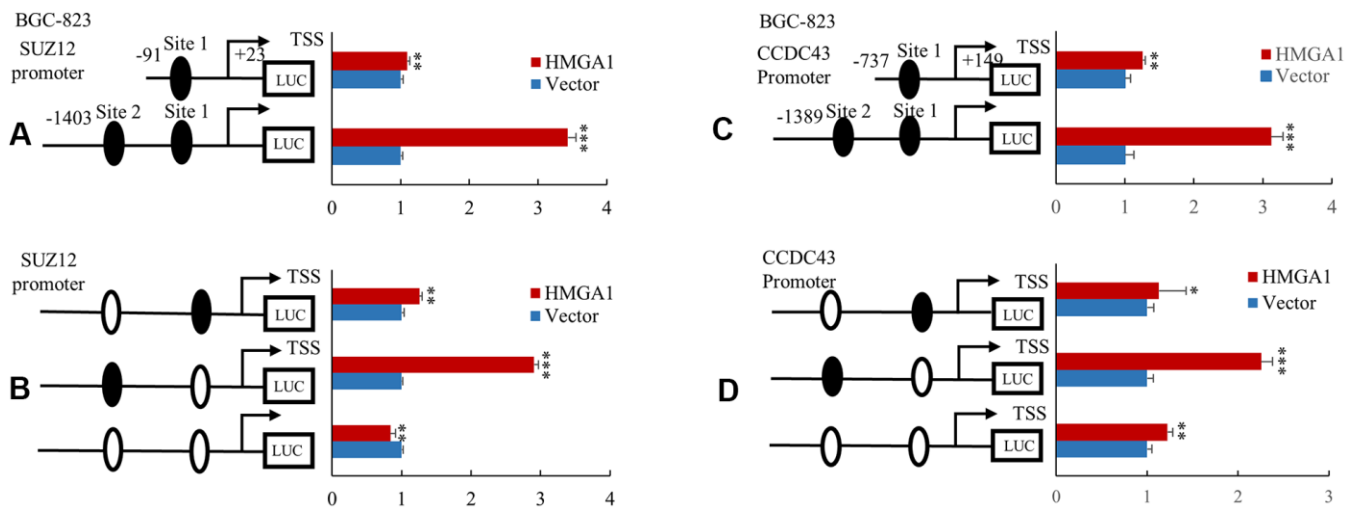


**SUPPLEMENTARY FIGURES**



**Supplementary Figure 1. Effect of HMGA1 on cell proliferation capacity.** (A) The GC cells transfected with the ectopic expression or knockdown of HMGA1 gene at 48 h and then stained with EdU and Hoechst 33342. \*\*\*, P < 0.01. (B) The results are presented as the average number of colonies from three wells. \*\*, P < 0.05 and \*\*\*, P < 0.01.



**Supplementary Figure 2. HMGA1 transactivates SUZ12 or CCDC43 promoter activities.** (A, C) The SUZ12 or CCDC43 promoter construct was cotransfected with HMGA1 or vector in BGC-823 cells, and the relative luciferase activity was determined. \*\*, P < 0.05; \*\*\*, P < 0.01. (B, D) Selective mutation analyses identified HMGA1-responsive regions in the SUZ12 or CCDC43 promoter. Mutated SUZ12 or CCDC43 promoter constructs were cotransfected with HMGA1 and relative luciferase activities were determined. \*, P > 0.05; \*\*, P < 0.05; \*\*\*, P < 0.01.