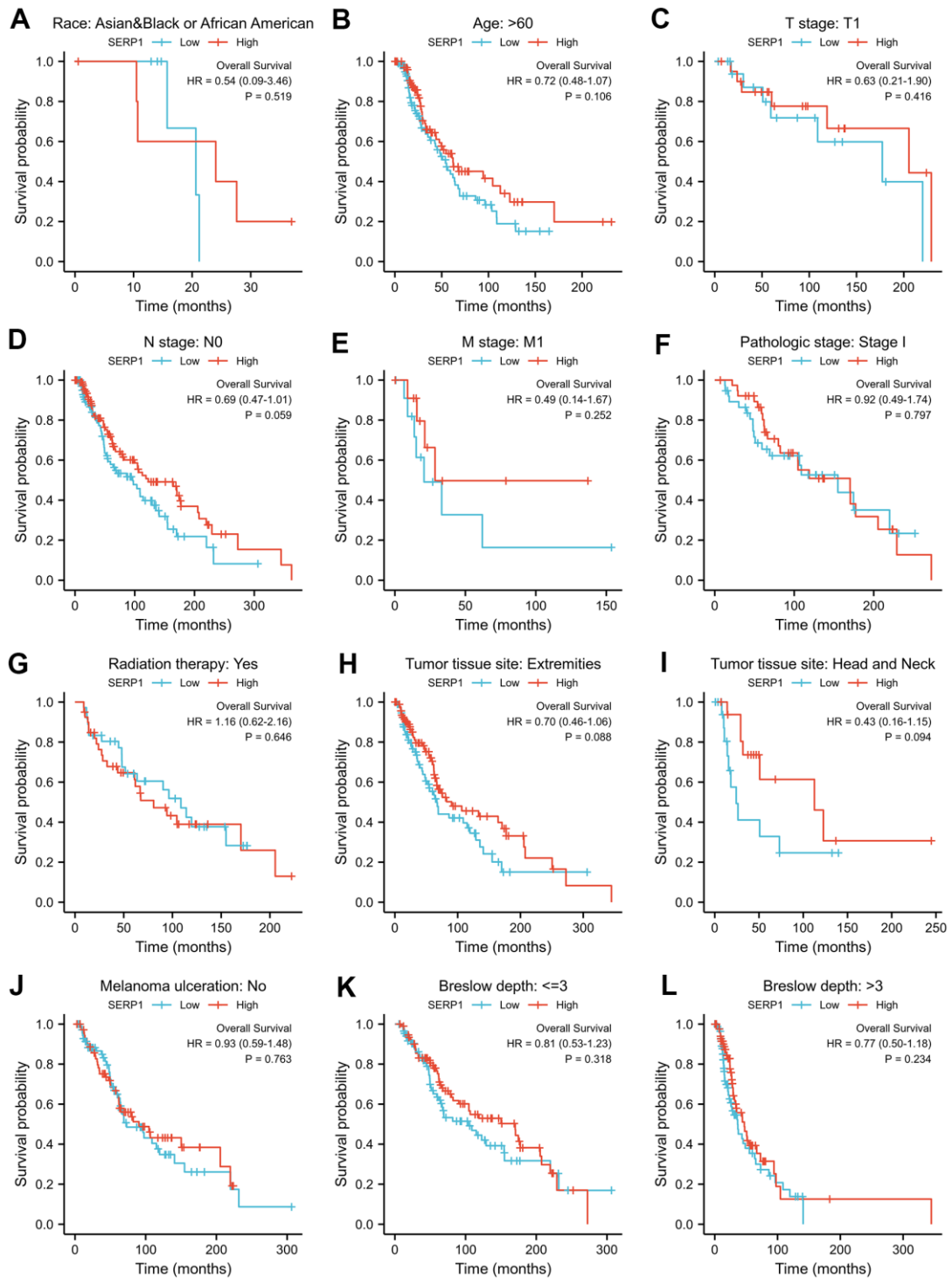
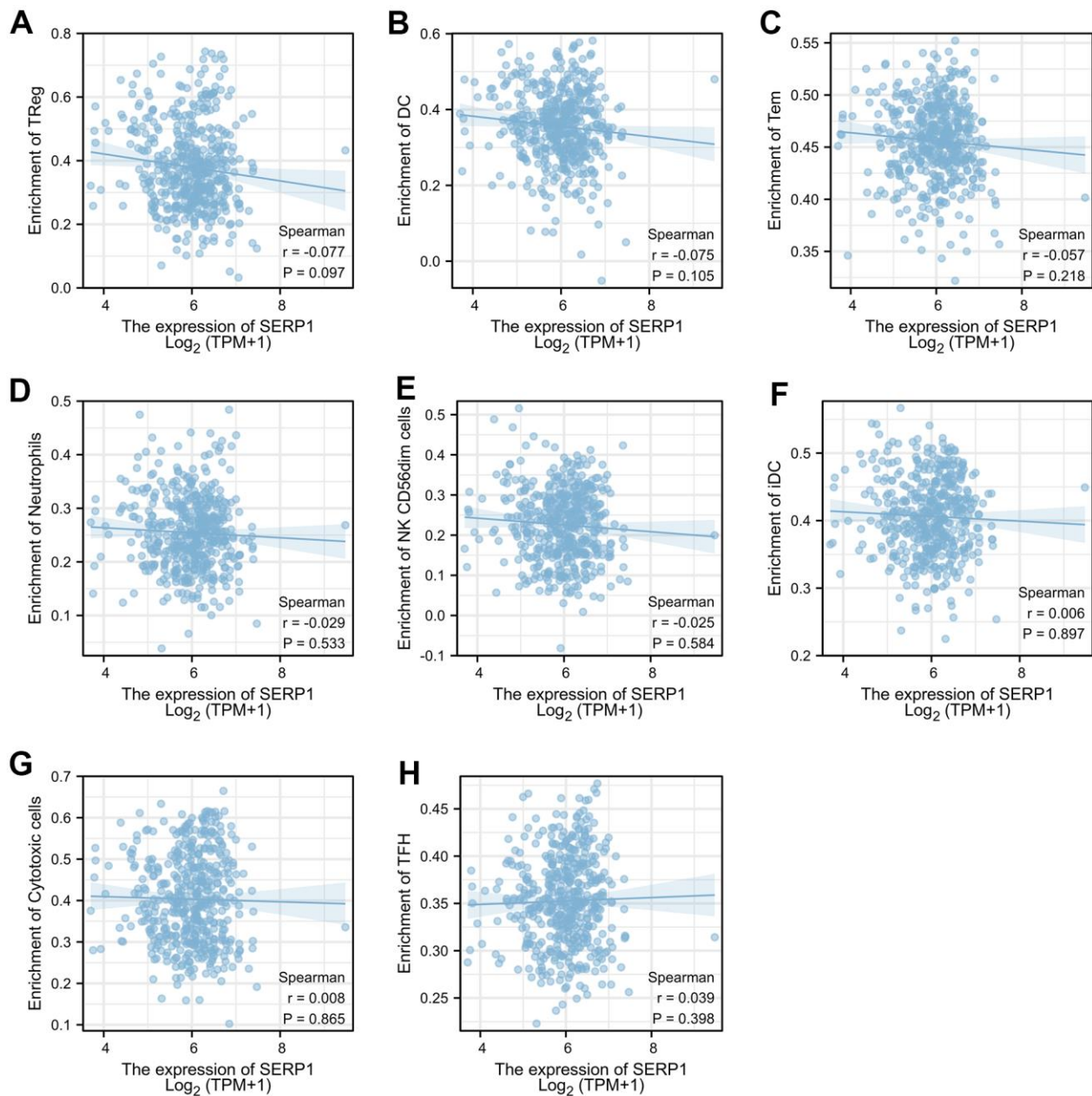


**SUPPLEMENTARY FIGURES**



**Supplementary Figure 1. The subgroups that high or low SERP1 expression did not show statistical significance on OS. OS Kaplan-Meier curve without statistical significance for (A) Asian and Black or African American, (B) Age > 60, (C) T stage (T1), (D) N stage (N0), (E) M stage (M1), (F) Pathologic Stage (Stage I), (G) Radiation therapy Yes, (H) Tumor tissue site Extremities, (I) Tumor tissue site Head and neck, (J) Melanoma ulceration No, (K) Breslow depth ≤ 3, (L) Breslow depth >3.**



**Supplementary Figure 2. Correlation of SERP1 and immune cell infiltration in SKCM.** The (A) Treg, (B) DC, (C) Tem, (D) Neutrophils, (E) NK CD56dim cells, (F) iDC, (G) Cytotoxic cells, (H) TFH showed no significant correlation with SERP1.