

GSDMs are potential therapeutic targets and prognostic biomarkers in clear cell renal cell carcinoma

Lei Yao^{1,*}, Juanni Li^{2,*}, Zhijie Xu², Yuanliang Yan^{3,4}, Kuan Hu¹

¹Department of Hepatobiliary Surgery, Xiangya Hospital, Central South University, Changsha 410008, Hunan, China

²Department of Pathology, Xiangya Hospital, Central South University, Changsha 410008, Hunan, China

³Department of Pharmacy, Xiangya Hospital, Central South University, Changsha 410008, Hunan, China

⁴National Clinical Research Center for Geriatric Disorders, Xiangya Hospital, Central South University, Changsha 410008, Hunan, China

*Equal contribution

Correspondence to: Kuan Hu; email: kuan.hu@csu.edu.cn

Keywords: GSDM family, ccRCC, expression profiles, prognosis, immune infiltration

Received: November 10, 2021

Accepted: March 14, 2022

Published: March 23, 2022

Copyright: © 2022 Yao et al. This is an open access article distributed under the terms of the [Creative Commons Attribution License](https://creativecommons.org/licenses/by/3.0/) (CC BY 3.0), which permits unrestricted use, distribution, and reproduction in any medium, provided the original author and source are credited.

ABSTRACT

GSDM family is a group of critical proteins that mediate pyroptosis and plays an important role in cell death and inflammation. However, their specific function in clear cell renal cell carcinoma (ccRCC, KIRC) have not been clarified comprehensively. In this study, we assessed the roles of the GSDM family in expression, prognostic value, functional enrichment analysis, genetic alterations, immune infiltration and DNA methylation in ccRCC patients by using different bioinformatics databases. We found that the expression levels of GADMA-E were significantly higher in ccRCC tissues compared with normal tissues, while the expression level of PJVK was decreased. Moreover, survival analysis indicated that upregulation of GSDME was related to poor overall survival (OS) and recurrence-free survival (RFS) of ccRCC patients. The main function of differentially expressed GSDM homologs was related to ion transport. We also found that the expression profiles of the GSDM family were highly correlated with infiltrating immune cells (i.e., CD8+ T cells, CD4+ T cells, B cells, macrophages, neutrophils and dendritic cells), and there were significant differences in the expression of GSDM family in different ccRCC immune subtypes. Furthermore, DNA methylation analysis indicated that the DNA methylation levels of GSDMA/B/D/E were decreased, while the DNA methylation level of PJVK was increased. In conclusion, this study provides integrated information about abnormal GSDM family members as potential biomarkers for the diagnosis and prognosis of ccRCC. Especially, GSDME was a potential clinical target and prognostic biomarkers for patients with ccRCC.

INTRODUCTION

Renal cell carcinoma (RCC) is a malignant tumor originating from the renal tubular epithelial system. It is one of the most common urinary tumors in adults [1, 2]. In 2019, there were about 73820 patients with new renal cell carcinoma in the United States, and about 14770 died of renal cell carcinoma [3]. About 70-80% of renal cell carcinoma is clear cell carcinoma (ccRCC), which is the most common pathological subtype of renal cell

carcinoma [4]. In recent years, the incidence of renal cell carcinoma worldwide has increased steadily at the rate of 2-4% per year [5]. Surgery is the main treatment for ccRCC because it's not sensitive to chemotherapy and radiotherapy. Moreover, the prognosis of patients with metastatic clear cell renal carcinoma is very poor, and the five-year survival rate is less than 10% [6-8].

Gasdermins (GSDMs) protein family takes part in diverse functions, which are expressed in a variety of

cell types and tissues. GSDMs were firstly found during the positional cloning of mouse skin mutations [9, 10]. It consists of six human genes GSDMA-D, GSDME (DFNA5) and PJVK (DFNB59), all of which encode leucine-rich proteins [9]. Remarkably, among GSDM family proteins, the N-terminal and C-terminal domains are highly conserved. GSDMs are involved in cell death and inflammation, especially the role of GSDMD in inflammatory body signal transduction and pyroptosis. GSDMD is a key factor in pyroptosis because it can be cleaved by inflammatory caspase and form membrane pores [11–14].

Previous studies have demonstrated that, as a key regulator, the GSDM family directly or indirectly affects the development of various tumors like breast cancer [15], gastric cancer [16] and ovarian cancer [17]. Although, the effect of the GSDM family on ccRCC and its mechanism have not been elucidated in detail. Second-generation of sequencing technology and many open source databases provide favorable conditions for us to analyze the GSDM family in an all-round way, which will also help to clarify the role of GSDMs in the development and prognosis of ccRCC.

In present study, a comprehensive bioinformatic analysis was carried out to clarify the effect of GSDM family members in ccRCC. We profoundly evaluated the potential of GSDM family members as therapeutic targets or prognostic biomarkers through the analysis of multiple databases. The aim of this research is to provide more favorable guidance to clinicians in selecting appropriate therapeutic agents and to provide a new basis for survival prediction in ccRCC patients.

RESULTS

Abnormal expression of the GSDM family in patients with ccRCC

First, we explored the mRNA expression levels of the GSDM family (GSDMA-E, PJVK) between ccRCC and normal tissues using the TNMPlot database. The results revealed that GSDMs were expressed at significantly higher levels in ccRCC, except for PJVK, which was expressed at decreased levels in ccRCC tissues (Figure 1A). By comparing the relative expression levels of the GSDMs family in ccRCC though GEPIA2 we found that the expression of GSDMD and GSDME were higher relative to other molecules, and in contrast GSDMC and GADNA were expressed at lower levels (Figure 1B).

In addition, associations between GSDMs expression and clinicopathological stage and tumor grade of ccRCC were presented by GEPIA2 and TISIDB. Higher

mRNA expression levels of GSDMB/D/E were related to higher tumor stage. But the mRNA expression level of PJVK was negatively related to tumor stage, and the higher the tumor stage, the lower its expression level (Figure 2A). Similarly, the mRNA expression levels of GSDMA/B/D/E were positively correlated with tumor grade (Figure 2B).

Prognostic value of mRNA expression of the GSDM family in ccRCC patients

The prognostic value of different GSDMs expression for ccRCC patients was obtained by Kaplan-Meier analysis, including relapse-free survival (RFS) and overall survival (OS). As shown in the results, higher expression of GSDMB/C/D/E and PJVK showed a significant correlation with poorer OS in ccRCC patients. However, the high transcript expression of GSDMA did not show any correlation (Figure 3A). We then analyzed the relationship between the expression of GSDMs and RFS and showed that the expression of GSDMB/E and PJVK correlated with RFS in ccRCC patients. The transcript levels of GSDME were negatively correlated with RFS in patients, while GSDMB and PJVK showed a positive correlation (Figure 3B). Taken together, GSDME expression predicted both poor OS and RFS, revealing that it may be a promising prognostic biomarker for ccRCC patients.

Genetic alteration and functional analysis of the GSDM family in ccRCC patients

To further explore the molecular characteristics of the GSDM families that exhibit markedly differential expression, we performed a comprehensive bio-functional analysis of each of them. Differentially expressed GSDM molecules were evaluated by using the TCGA dataset. GSDMA-E and PJVK show altered expression in ccRCC, with 6%, 5%, 2.6%, 7%, 8% and 5% in the alteration rates, respectively (Figure 4A). In the GEPIA2 database, Pearson correction was used to assess the correlation between each family member. We found a strong negative association between GSDMC and GSDMD, GSDMA and GDMB, GSDMB and GSDME. GSDMB was positively correlated with PJVK and GSDMD (Figure 4B).

As we know, proteins interact in a variety of ways to form a complex protein-protein interaction (PPI) network that maintains cell activities. Therefore, it becomes crucial to deconstruct the structure and function of protein complexes by constructing PPI patterns. Subsequently, through the cBioPortal database we downloaded 206 differentially expressed molecules with high correlation to GSDM family members to

explore the PPI patterns among them and further modified them for visualization using Cytoscape software (Supplementary Table 2). The top 60 genes were shown in Figure 5A. These results suggest that EGF, ACAN, POSTN, ATP6V1B1, CDH2, CFTR, CLCNKB, ATP6V0A4, LOX and BSND as the major molecules are associated with the functional regulation of GSDM family molecules in ccRCC. Go enrichment analysis has annotated the biological significance of differentially expressed biomarkers and their various functions in the organism. KEGG is a genome encyclopedia that used to biologically interpret the fully sequenced genome. In order to explore the biological

significance and functions of the above co-expressed molecules, we performed GO annotation and KEGG pathway analysis on them using Webgestalt database. GO analysis confirmed that GSDM family molecules are mainly distributed on cell membranes and play regulatory roles in several important biological processes. Moreover, the results of molecular functional analysis showed that the main function of this family members is to act by binding to different proteins (Figure 5B). KEGG pathway analysis investigated that co-expressed genes were mainly enriched in collecting duct acid secretion, linoleic acid metabolism and vibrio cholera infection (Figure 5C).

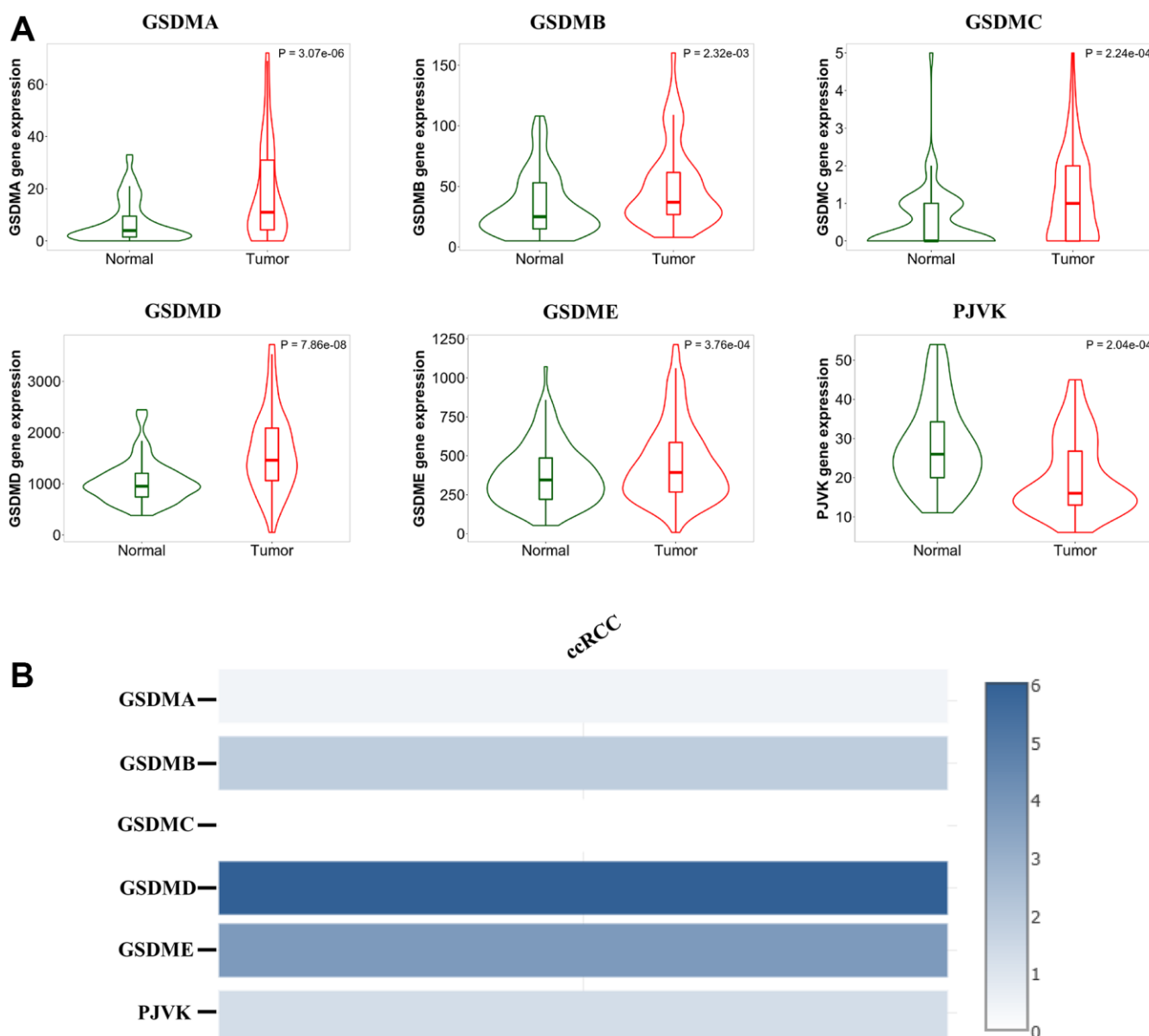


Figure 1. Analysis of the GSDM family expression levels in ccRCC tissues. (A) The mRNA expression levels of different GSDM family members in ccRCC and normal samples (TNMplot). **(B)** The relative expression of the GSDM family in ccRCC.

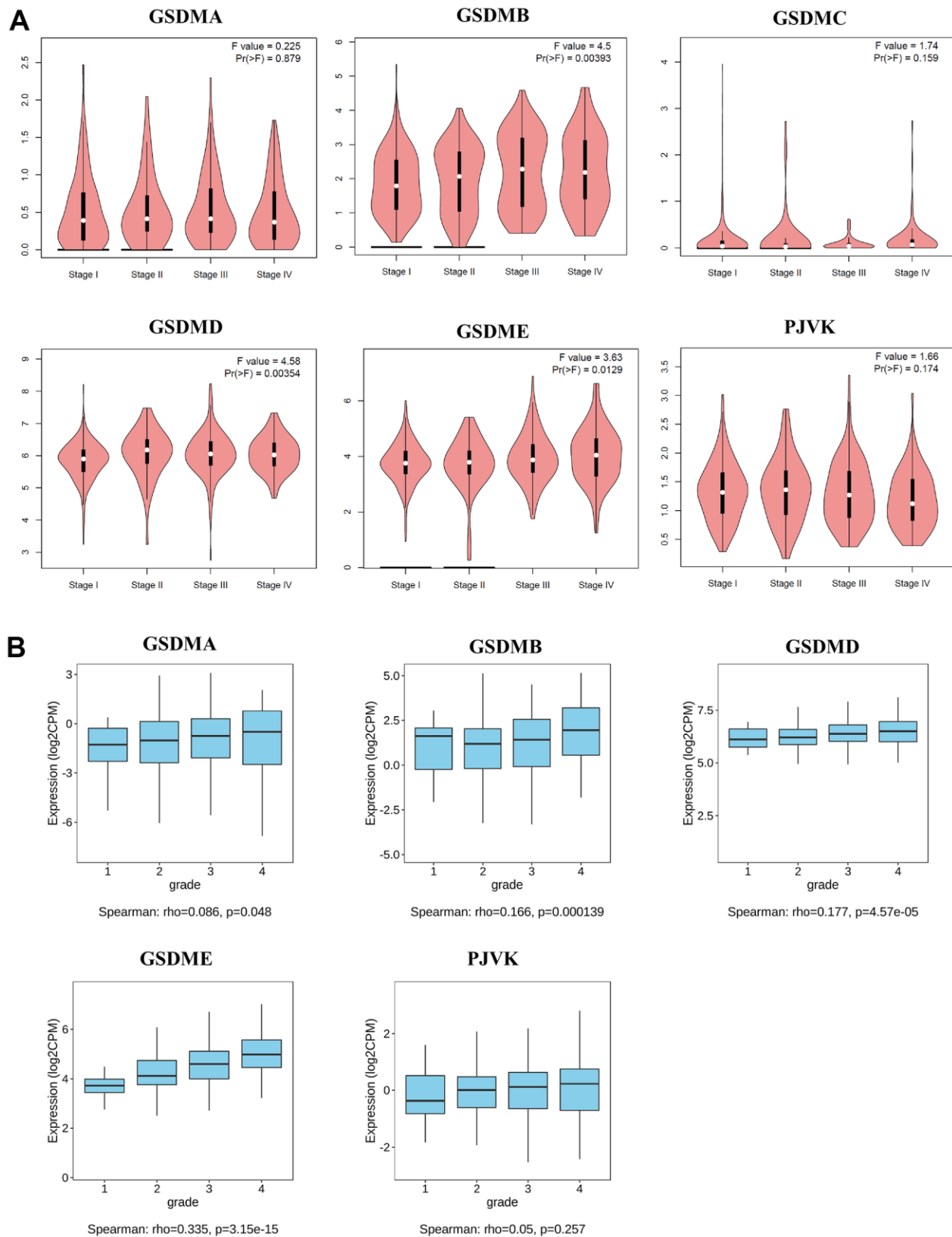


Figure 2. Relationships between mRNA expression of GSDM family and clinicopathological features of ccRCC. (A) The relationship between mRNA expression and pathological stage of ccRCC patients with different members of the GSDM family (GEP1A2). **(B)** The relationship between mRNA expression and tumor grade of ccRCC patients with different members of the GSDM family (TIS1DB). * $p < 0.05$, ** $p < 0.01$, *** $p < 0.001$.

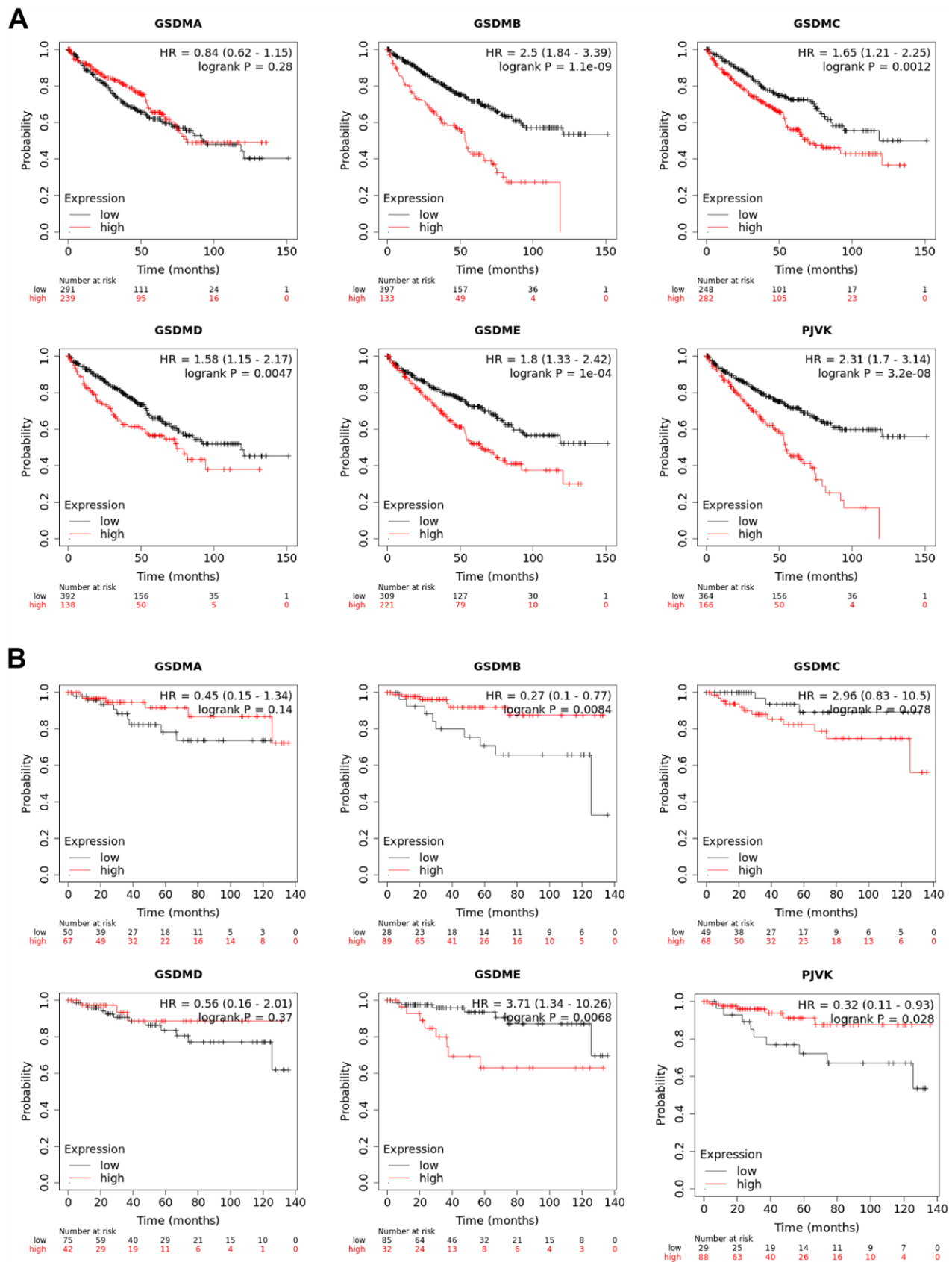


Figure 3. Prognostic values of GSDM family in ccRCC. (A) The overall survival (OS) curve of GSDM molecules in ccRCC patients (Kaplan-Meier plotter). **(B)** The relapse-free survival (RFS) curve of GSDM molecules in ccRCC patients (Kaplan-Meier plotter).

Immune cell infiltration of GSDM family in ccRCC patients

Recently, several findings have revealed that several GSDMs may be involved in inflammatory responses and immune cell infiltration in the microenvironment of a variety of cancers [18, 19]. The associations between individual GSDMs and the infiltration of different immune cells was explored using the TIMER2.0 database. Consequently, the expression of GSDMA and

GSDME positively correlated with macrophage, neutrophil and dendritic cell infiltration (Figure 6A, 6E). GSDMB expression was positively related to the infiltration of CD4+ cells and neutrophils, while it was negatively related to macrophages (Figure 6B). GSDMC was negatively related to CD8 + T cells and B cells, and positively related to CD4 + T cells and macrophages (Figure 6C). GSDMD was positively correlated with CD8 + T cells, CD4 + T cells, B cells and dendritic cells, and negatively correlated with

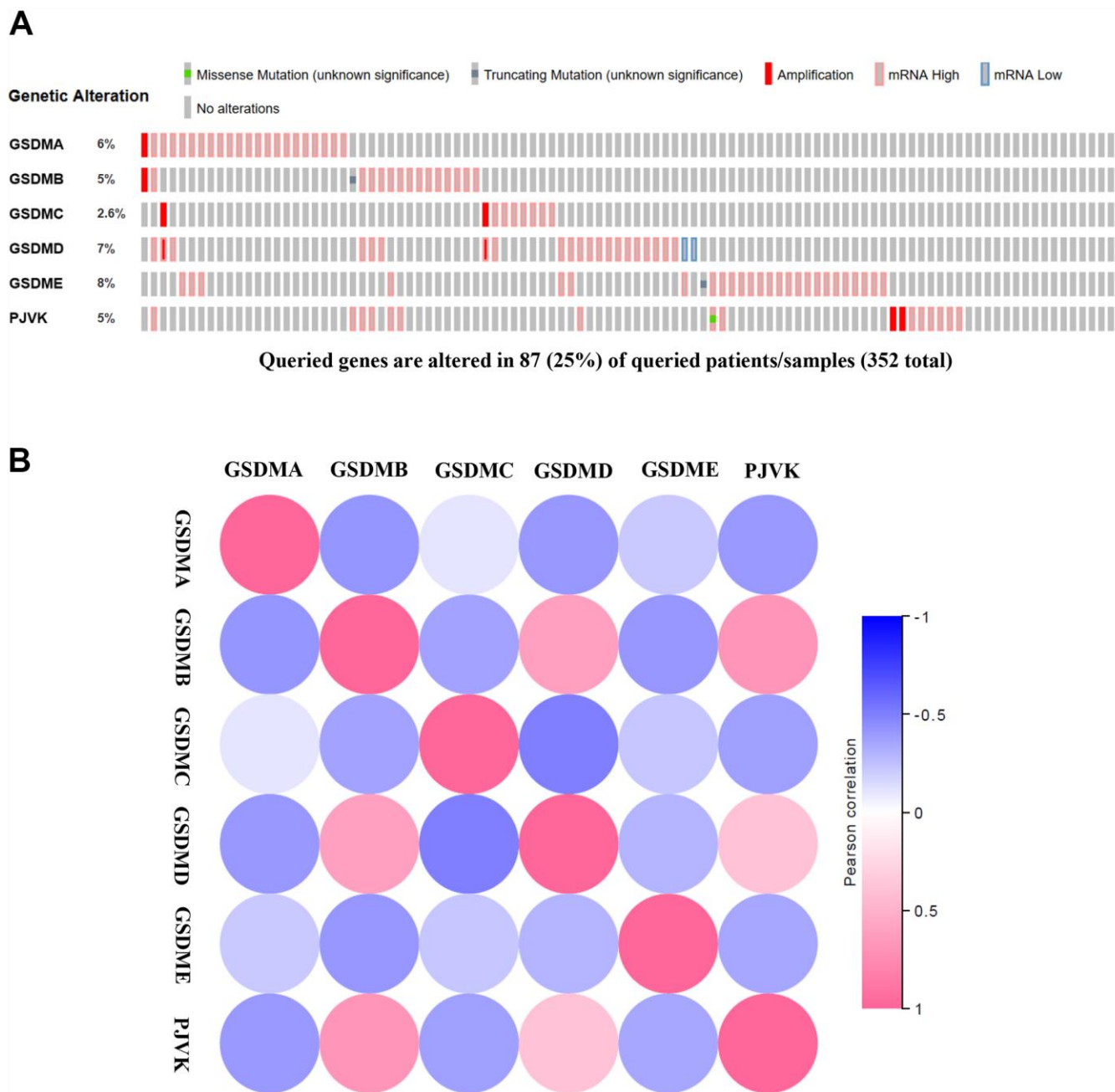


Figure 4. Genetic alternatives and correlation analysis of the GSDM family in ccRCC. (A) Summary of the alteration rates in each GSDM family member in ccRCC. **(B)** Correlation between different GSDM families in ccRCC (GEPIA).

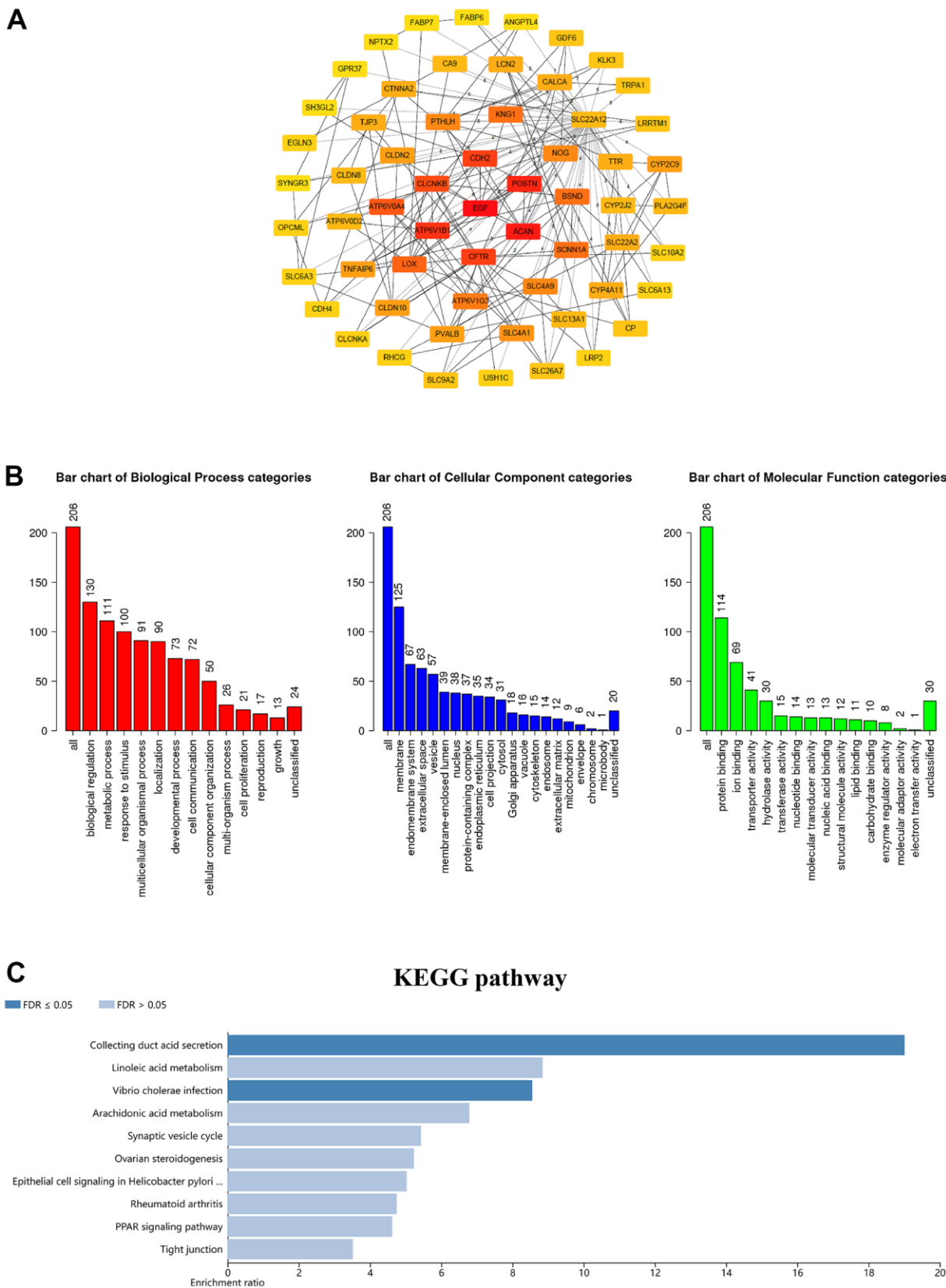


Figure 5. Coexpression network analysis of the GSDM family in ccRCC. (A) The PPI network of GSDM family interaction partners is generated by the cBioPortal and Cytoscape. **(B)** GO enrichment in biological processes, molecular function and cellular components for the 206 co-expression genes. **(C)** KEGG pathway enrichment analysis of the 206 co-expression genes.

macrophages (Figure 6D). We also found that among immune infiltrated cells, the infiltration of CD4+ T cell was positively related to PJKV expression, but the infiltration of CD8+ T cell and dendritic cell was

negatively correlated with it (Figure 6F). Furthermore, through the TISIDB website, we explored the role of GSDM family expression among ccRCC immune subtypes. Immune subtypes have been detailed into

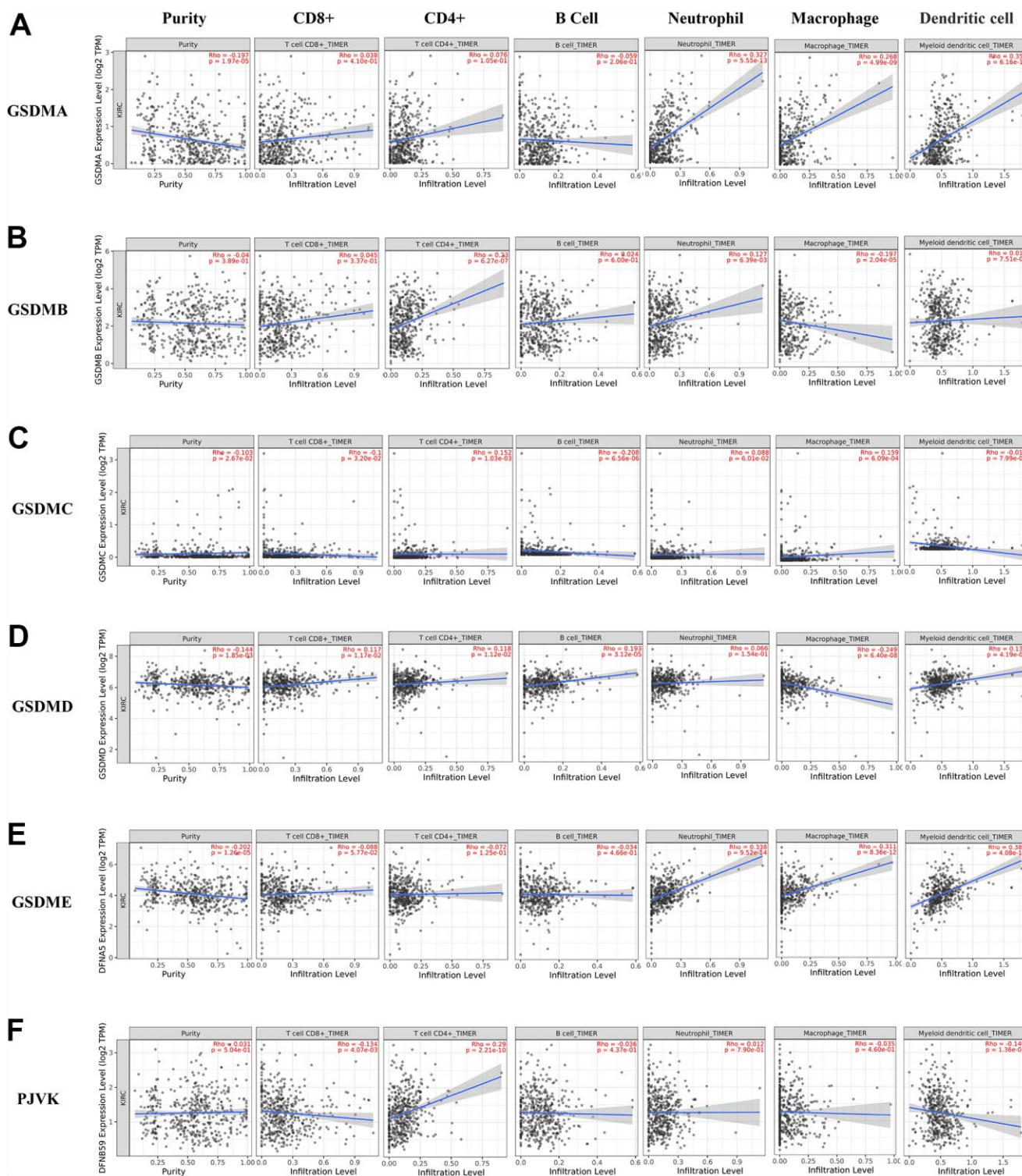


Figure 6. The correlations between differentially expressed GSDM family and immune cell infiltration. (A–F) The effect of GSDMA–E and PJKV on the immune cell infiltration was analyzed by TIMER2.0.

six types, and we found that GSDMA/B/D and GSDME showed different forms of correlation with different immune subtypes of ccRCC. For instance, GSDME showed high expression in wound healing and TGF- β dominant and low expression in immunologically quiet (Supplementary Figure 1).

Methylation expression levels of the GSDM family in ccRCC patients

In general, the promoter DNA methylation level is negatively related to the gene expression level under the condition of high gene body methylation [20, 21]. Therefore, it becomes necessary to assess the relationships between DNA methylation and GSDM members expression. Through the DiseaseMeth database, we found that the DNA methylation expression levels of GSDMA/B/D/E in ccRCC samples were significantly lower than those in normal samples. In addition, the DNA methylation expression level of PJVK was higher in ccRCC samples compared to normal samples (Figure 7). Interestingly, previous results confirmed that the expression of GSDMA/B/D/E was significantly elevated in tumor tissues, while PJVK was downregulated. All those suggest that the expression levels of GSDMA/B/D/E and PJVK might be affected by their DNA methylation levels. In addition to DNA methylation, the expression levels of GSDMC may be affected by other regulatory mechanisms.

DISCUSSION

Cell death is a critical phenomenon of life activities, which is essential for proper homeostatic maintenance and survival in multicellular organisms [22, 23]. Pyroptosis, a form of programmed cell death, which can be mediated by several caspase members [24]. It is mainly divided into classical and non-classical pathways, in which inflammatory bodies play an important role [25]. Moreover, it is believed to be critically involved with the occurrence, invasion and metastasis of tumors [25]. GSDM family (GSDMA-E and PJVK) is a “pore-forming protein” family, with about 45% homologous sequences between their members [26]. GSDMD is the most common and thoroughly studied pyroptosis-related protein known at present, and it is involved in the classical and non-classical pathways of pyroptosis [27]. GSDMB is upregulated in some cancers, like breast cancer, gastric cancer, and colon cancer cells [28]. Therefore, it has been suggested that GSDMB may act as an oncogene to facilitate this process during tumor progression and metastasis [18, 29]. Because sulfide can uniquely bind to the full-length and N-terminal structural domains of GSDMB, GSDMB can induce pyrogenesis [30]. Recently, the function of GSDME in pyroptosis has attracted more and more attention. When GSDME was highly expressed in cells, caspase-3 cleaved GSDME and pyroptosis occurred; When GSDME is low or not expressed, apoptosis occurs [31].

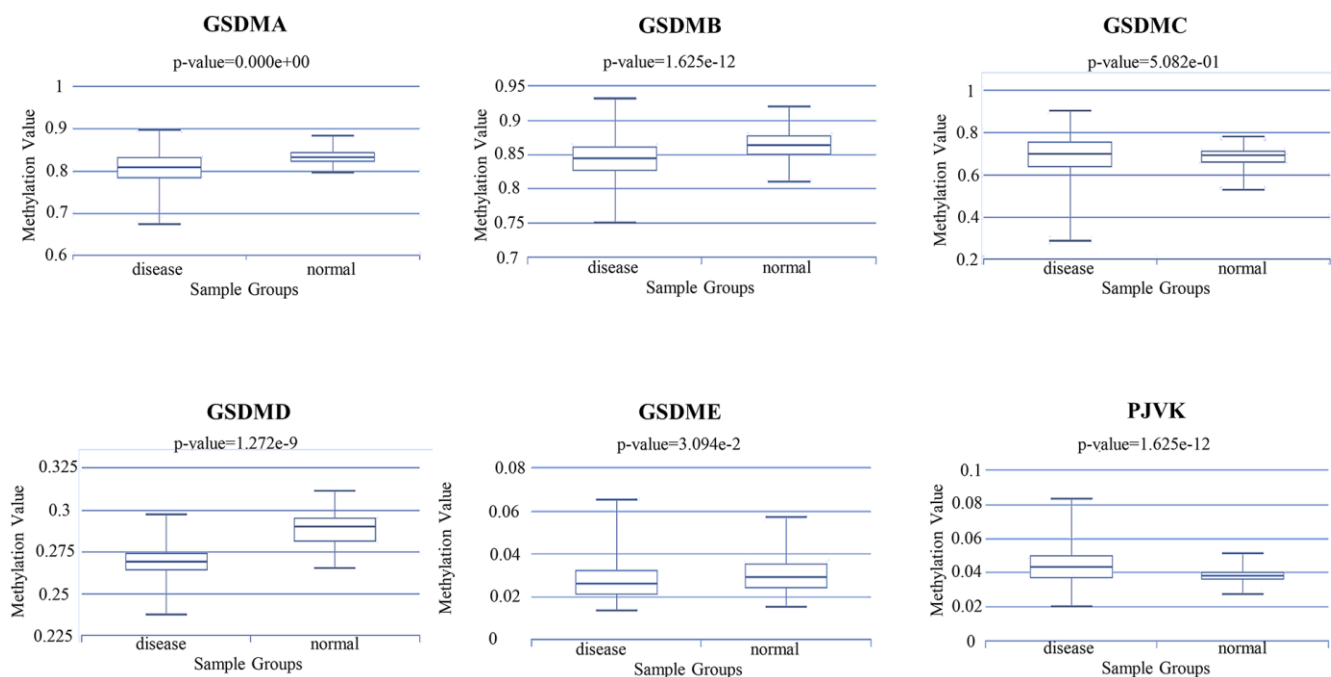


Figure 7. The methylation level of different GSDM family members in ccRCC and normal samples (DiseaseMeth database).

In our research, we all around investigated the expression and clinical prognostic value of the GSDM family in ccRCC, and for the first time, presented the differences in GSDM mRNA expression in tumor tissues of ccRCC patients versus paired adjacent normal tissues. We also found that the GSDM family is closely associated with ccRCC clinicopathological stage and tumor grade. Furthermore, high expression levels of GADMB/C/D/E were negatively correlated with OS in ccRCC patients. In contrast, decreased expression levels of PJVK increased OS time in ccRCC patients. The high expression levels of GSDMB and PJVK were positively correlated with patients' RFS, while the expression levels of GSDME were inversely correlated with patients' RFS. From the above results, we found that only GSDME expression predicted both poor OS and RFS, revealing that it may be a potential prognostic biomarker for ccRCC patients.

During tumorigenesis, multiple genetic alterations at the transcriptional level were often accompanied [32]. The typical mutations of GSDM family mRNA expression level in tumor and normal tissues prove the frequent alterations of genetic information in the process of ccRCC. All those comprehensively prove that the differential expression of the GSDM family may play a key role in ccRCC. Next, Go and KEGG pathway analysis showed that the abnormal expression of GSDM family members in ccRCC mainly affected intracellular ion transport and cell metabolism by regulating the activity of ion channels. By constructing the PPI network of GSDM family members and their 206 co-expressed genes, we found that EGF, ACAN, POSTN, ATP6V1B1, CDH2, CFTR, CLCNKB, ATP6V0A4, LOX and BSND were mainly related to the modulation and function of the GSDM family differentially expressed in ccRCC.

There is growing evidence that tumorigenesis, progression or recurrence may be influenced by immune cell infiltration in the tumor microenvironment and may be an important factor in the efficacy and clinical outcome of immunotherapy [33–35]. Tumor-infiltrating lymphocytes (TILs) in the tumor microenvironment (TME) are independent predictors of prognosis and immunotherapeutic efficacy in many cancers [36, 37]. Our study shows that GSDM family members are closely related to TILs in ccRCC and play an important role in TME. For instance, we demonstrated a significant associations between the GSDMs expression and the infiltration of several immune cells. Previous studies have shown that the RFS of ccRCC patients is related to lower T cell infiltration, lower adaptive immune response and higher neutrophil gene expression [38]. Then, we investigated the expression of the GSDMs in different immune

subtypes of ccRCC to investigate the potential mechanism of it. The results reflected the expression of most GSDM molecules differed significantly among the different ccRCC immune subtypes, which may prove that GSDM family members are a promising biomarker for ccRCC diagnosis and participate in immune regulation.

DNA methylation plays an irreplaceable role in the tumorigenesis and development of several tumor types. Our findings have revealed the presence of aberrant expression of DNA methylation in the GSDM family in ccRCC. Meanwhile, other studies have made some breakthroughs in DNA methylation modifications of the GSDM family. Researches have shown the potential of the methylation status of GSDME as a marker for cancer detection in breast and colorectal cancer [39, 40]. Additionally, GSDME methylation status lead to the lower GSDME expression in some tumor cell types, compared with that in normal tissues, which makes it difficult for most tumor cells to activate the pyroptosis [41–43]. Moreover, GSDME methylation was demonstrates to be related with distant metastasis of tumors [44]. In this study, we found that GSDMA/B/D/E methylation levels were significantly lower and PJVK methylation level was significantly higher in ccRCC tissues than those in normal tissues. The methylation status of the GSDMs was consistent with their expression trend, suggesting that DNA methylation may play a critical role in regulating GSDM expression.

Nevertheless, there are a number of limitations of this study. First, there are racial limitations of the cases in the TCGA database, which are mainly white and black, that limited our conclusions for other ethnic populations. Additionally, the molecular mechanisms of action of GSDMs on the occurrence and development of GBM cells are unclear, which need to be further explored. Moreover, although this study has obtained some attractive results, these results are based on the analysis of bioinformatics data, a large number of functional and mechanistic experiments need to be applied to confirm the above conclusions, and large-scale clinical trials are needed to confirm the value of GSDMs for clinical applications.

In this study, we used multiple bioinformatics approaches to construct a comprehensive landscape of GSDM family expression and prognosis in ccRCC. Through comprehensive analysis, we observed that the high expression of GSDME was significantly related to the poor prognosis of ccRCC patients. In addition, the abnormal expression of GSDME was significantly related to the tumor stage and grade in ccRCC. These results provide more favorable guidance

to clinicians in selecting appropriate therapeutic agents and to provide a new basis for survival prediction in ccRCC patients.

MATERIALS AND METHODS

GEPIA2

GEPIA2 is a web-based TCGA data analysis tool that provides the required functional analysis, such as expression analysis and survival analysis [45]. In this paper, we applied GEPIA2 to explore the expression of genes and the differences in mRNA expression of different genes at different stages of ccRCC (stages 1, 2, 3, and 4). The bioinformatics databases used in this study were summarized in Supplementary Table 1.

TNMPlot

The TNMplot database [46] is an online analysis tool for comparing gene expression levels in normal, tumor and metastatic tissues. It consists of 57,000 samples and contains several RNA-Seq and microarray datasets, making it the largest transcriptomic cancer database available. In this research, we used TNMPlot to analyze the mRNA expression differences between normal tissues, tumors and metastatic tissues. $P < 0.05$ were considered statistically significant.

UALCAN

UALCAN is an interactive web resource based on level 3 RNA sequencing methodology and the clinical data of 31 cancer types from TCGA datasets [47]. In this research, we applied UALCAN to evaluate the mRNA expression level of the GSDM family in ccRCC about nodal metastasis status (N0, 1, 2, 3 and 4). Statistical analyses were performed using Student's t-test and significant differences were defined as a p-value < 0.05 .

The Human Protein Atlas

The Human Protein Atlas (THPA) is an online database that can be used to validate the expression of target genes using produced antibody and protein expression data [48]. In this research, immunohistochemical images were used to compare the differences in GSDMs protein levels between normal tissues and ccRCC tissues.

Kaplan-Meier plotter

Kaplan-Meier plotter was used to visualize the prognostic value of the GSDM family in ccRCC [49]. In this research, we investigated the OS/RFS of ccRCC patients visually by K-M survival chart. The following information was provided by the K-M plotter website,

including: cases number, median mRNA expression level, HR, 95% CI and p-value.

Cytoscape

Cytoscape is an open source data curation tool by which high-throughput expression data and other types of data can be integrated into the same network of biomolecular interactions [50]. In this study, we screened 1410 co-expressed molecules of GSDMs from cBioPortal and functionally integrated them by Cytoscape software. The size of the nodes in the network was positively correlated with the strength of the interaction between the proteins.

WebGestalt

WebGestalt is a comprehensive and interactive web server [51]. In this study, WebGestalt was used for GO enrichment analysis and KEGG pathway analysis.

TIMER2.0

TIMER2.0 [52] is a web server to comprehensive analysis the relationships between expression patterns and tumor-infiltrating immune cells. TIMER2.0 allows users to enter function-specific parameters and show the resulting map to conveniently access tumor immunological, clinical and genomic characteristics.

DiseaseMeth2.0

The human disease methylation database (DiseaseMeth2.0) contains not only methylation modifications data, but also annotated data on the DNA methylation status of multiple diseases [53]. We used DiseaseMeth2.0 to detect the possible methylation values of the GSDM family in ccRCC.

TISIDB

The TISIDB database (<http://cis.hku.hk/TISIDB>) is an open source website exploring the relationship between genes and tumor immunity interactions, which completed by integrating more than 4176 records from 2530 publications to report 988 genes associated with antitumor immunity [54]. We used the TISIDB database to estimate the mRNA expression level of the GSDM family in different cancer grades (grade 1, 2, 3 and 4) of ccRCC, and analyzed GSDM family expression in different immune subtypes.

AUTHOR CONTRIBUTIONS

Conception and design: K Hu and J Li. Writing, review, and/or revision of the manuscript: L Yao and J Li,

Administrative, technical, or material support: Z Xu and Y Yan. All authors approved the final version of the manuscript.

CONFLICTS OF INTEREST

The authors declare that they have no conflicts of interest.

FUNDING

This study is supported by grants from the National Natural Science Foundation of China (82102743, 82103300), the Youth Science Foundation of Xiangya Hospital (2020Q07), Outstanding Postdoctoral Innovative Talents Foundation (2021RC2022).

REFERENCES

1. Siegel RL, Miller KD, Jemal A. Cancer statistics, 2020. *CA Cancer J Clin.* 2020; 70:7–30. <https://doi.org/10.3322/caac.21590> PMID:[31912902](https://pubmed.ncbi.nlm.nih.gov/31912902/)
2. Bray F, Ferlay J, Soerjomataram I, Siegel RL, Torre LA, Jemal A. Global cancer statistics 2018: GLOBOCAN estimates of incidence and mortality worldwide for 36 cancers in 185 countries. *CA Cancer J Clin.* 2018; 68:394–424. <https://doi.org/10.3322/caac.21492> PMID:[30207593](https://pubmed.ncbi.nlm.nih.gov/30207593/)
3. Siegel RL, Miller KD, Jemal A. Cancer statistics, 2019. *CA Cancer J Clin.* 2019; 69:7–34. <https://doi.org/10.3322/caac.21551> PMID:[30620402](https://pubmed.ncbi.nlm.nih.gov/30620402/)
4. Muglia VF, Prando A. Renal cell carcinoma: histological classification and correlation with imaging findings. *Radiol Bras.* 2015; 48:166–74. <https://doi.org/10.1590/0100-3984.2013.1927> PMID:[26185343](https://pubmed.ncbi.nlm.nih.gov/26185343/)
5. Greiman AK, Rosoff JS, Prasad SM. Association of Human Development Index with global bladder, kidney, prostate and testis cancer incidence and mortality. *BJU Int.* 2017; 120:799–807. <https://doi.org/10.1111/bju.13875> PMID:[28480994](https://pubmed.ncbi.nlm.nih.gov/28480994/)
6. Ornstein MC, Rini BI. Radical shifts in the first-line management of metastatic renal cell carcinoma. *Nat Rev Clin Oncol.* 2019; 16:71–2. <https://doi.org/10.1038/s41571-018-0146-4> PMID:[30538304](https://pubmed.ncbi.nlm.nih.gov/30538304/)
7. George S, Rini BI, Hammers HJ. Emerging Role of Combination Immunotherapy in the First-line Treatment of Advanced Renal Cell Carcinoma: A Review. *JAMA Oncol.* 2019; 5:411–21. <https://doi.org/10.1001/jamaoncol.2018.4604> PMID:[30476955](https://pubmed.ncbi.nlm.nih.gov/30476955/)
8. Scelo G, Larose TL. Epidemiology and Risk Factors for Kidney Cancer. *J Clin Oncol.* 2018; 36:JCO2018791905. <https://doi.org/10.1200/JCO.2018.79.1905> PMID:[30372394](https://pubmed.ncbi.nlm.nih.gov/30372394/)
9. Lunny DP, Weed E, Nolan PM, Marquardt A, Augustin M, Porter RM. Mutations in gasdermin 3 cause aberrant differentiation of the hair follicle and sebaceous gland. *J Invest Dermatol.* 2005; 124:615–21. <https://doi.org/10.1111/j.0022-202X.2005.23623.x> PMID:[15737203](https://pubmed.ncbi.nlm.nih.gov/15737203/)
10. Tamura M, Tanaka S, Fujii T, Aoki A, Komiyama H, Ezawa K, Sumiyama K, Sagai T, Shiroishi T. Members of a novel gene family, Gsdm, are expressed exclusively in the epithelium of the skin and gastrointestinal tract in a highly tissue-specific manner. *Genomics.* 2007; 89:618–29. <https://doi.org/10.1016/j.ygeno.2007.01.003> PMID:[17350798](https://pubmed.ncbi.nlm.nih.gov/17350798/)
11. Ding J, Wang K, Liu W, She Y, Sun Q, Shi J, Sun H, Wang DC, Shao F. Pore-forming activity and structural autoinhibition of the gasdermin family. *Nature.* 2016; 535:111–6. <https://doi.org/10.1038/nature18590> PMID:[27281216](https://pubmed.ncbi.nlm.nih.gov/27281216/)
12. Liu X, Zhang Z, Ruan J, Pan Y, Magupalli VG, Wu H, Lieberman J. Inflammasome-activated gasdermin D causes pyroptosis by forming membrane pores. *Nature.* 2016; 535:153–8. <https://doi.org/10.1038/nature18629> PMID:[27383986](https://pubmed.ncbi.nlm.nih.gov/27383986/)
13. Sborgi L, Rühl S, Mulvihill E, Pipercevic J, Heilig R, Stahlberg H, Farady CJ, Müller DJ, Broz P, Hiller S. GSDMD membrane pore formation constitutes the mechanism of pyroptotic cell death. *EMBO J.* 2016; 35:1766–78. <https://doi.org/10.15252/emboj.201694696> PMID:[27418190](https://pubmed.ncbi.nlm.nih.gov/27418190/)
14. Aglietti RA, Estevez A, Gupta A, Ramirez MG, Liu PS, Kayagaki N, Ciferri C, Dixit VM, Dueber EC. GsdmD p30 elicited by caspase-11 during pyroptosis forms pores in membranes. *Proc Natl Acad Sci USA.* 2016; 113:7858–63. <https://doi.org/10.1073/pnas.1607769113> PMID:[27339137](https://pubmed.ncbi.nlm.nih.gov/27339137/)
15. Zhang Z, Zhang H, Li D, Zhou X, Qin Q, Zhang Q. Caspase-3-mediated GSDME induced Pyroptosis in breast cancer cells through the ROS/JNK signalling pathway. *J Cell Mol Med.* 2021; 25:8159–68. <https://doi.org/10.1111/jcmm.16574> PMID:[34369076](https://pubmed.ncbi.nlm.nih.gov/34369076/)
16. Wang WJ, Chen D, Jiang MZ, Xu B, Li XW, Chu Y, Zhang YJ, Mao R, Liang J, Fan DM. Downregulation of gasdermin D promotes gastric cancer proliferation by regulating cell cycle-related proteins. *J Dig Dis.* 2018; 19:74–83.

- <https://doi.org/10.1111/1751-2980.12576>
PMID:[29314754](https://pubmed.ncbi.nlm.nih.gov/29314754/)
17. Berkel C, Cacan E. Differential Expression and Copy Number Variation of Gasdermin (GSDM) Family Members, Pore-Forming Proteins in Pyroptosis, in Normal and Malignant Serous Ovarian Tissue. *Inflammation*. 2021; 44:2203–16.
<https://doi.org/10.1007/s10753-021-01493-0>
PMID:[34091823](https://pubmed.ncbi.nlm.nih.gov/34091823/)
 18. Feng S, Fox D, Man SM. Mechanisms of Gasdermin Family Members in Inflammasome Signaling and Cell Death. *J Mol Biol*. 2018; 430:3068–80.
<https://doi.org/10.1016/j.jmb.2018.07.002>
PMID:[29990470](https://pubmed.ncbi.nlm.nih.gov/29990470/)
 19. Xia S, Hollingsworth LR 4th, Wu H. Mechanism and Regulation of Gasdermin-Mediated Cell Death. *Cold Spring Harb Perspect Biol*. 2020; 12:a036400.
<https://doi.org/10.1101/cshperspect.a036400>
PMID:[31451512](https://pubmed.ncbi.nlm.nih.gov/31451512/)
 20. Keller TE, Han P, Yi SV. Evolutionary Transition of Promoter and Gene Body DNA Methylation across Invertebrate-Vertebrate Boundary. *Mol Biol Evol*. 2016; 33:1019–28.
<https://doi.org/10.1093/molbev/msv345>
PMID:[26715626](https://pubmed.ncbi.nlm.nih.gov/26715626/)
 21. Kronfol MM, Jahr FM, Dozmorov MG, Phansalkar PS, Xie LY, Aberg KA, McRae M, Price ET, Slattum PW, Gerk PM, McClay JL. DNA methylation and histone acetylation changes to cytochrome P450 2E1 regulation in normal aging and impact on rates of drug metabolism in the liver. *Geroscience*. 2020; 42:819–32.
<https://doi.org/10.1007/s11357-020-00181-5>
PMID:[32221779](https://pubmed.ncbi.nlm.nih.gov/32221779/)
 22. Hotchkiss RS, Strasser A, McDunn JE, Swanson PE. Cell death. *N Engl J Med*. 2009; 361:1570–83.
<https://doi.org/10.1056/NEJMra0901217>
PMID:[19828534](https://pubmed.ncbi.nlm.nih.gov/19828534/)
 23. Strasser A, Vaux DL. Cell Death in the Origin and Treatment of Cancer. *Mol Cell*. 2020; 78:1045–54.
<https://doi.org/10.1016/j.molcel.2020.05.014>
PMID:[32516599](https://pubmed.ncbi.nlm.nih.gov/32516599/)
 24. Man SM, Karki R, Kanneganti TD. Molecular mechanisms and functions of pyroptosis, inflammatory caspases and inflammasomes in infectious diseases. *Immunol Rev*. 2017; 277:61–75.
<https://doi.org/10.1111/imr.12534>
PMID:[28462526](https://pubmed.ncbi.nlm.nih.gov/28462526/)
 25. Jorgensen I, Rayamajhi M, Miao EA. Programmed cell death as a defence against infection. *Nat Rev Immunol*. 2017; 17:151–64.
<https://doi.org/10.1038/nri.2016.147>
PMID:[28138137](https://pubmed.ncbi.nlm.nih.gov/28138137/)
 26. Shi J, Gao W, Shao F. Pyroptosis: Gasdermin-Mediated Programmed Necrotic Cell Death. *Trends Biochem Sci*. 2017; 42:245–54.
<https://doi.org/10.1016/j.tibs.2016.10.004>
PMID:[27932073](https://pubmed.ncbi.nlm.nih.gov/27932073/)
 27. Chen S, Mei S, Luo Y, Wu H, Zhang J, Zhu J. Gasdermin Family: a Promising Therapeutic Target for Stroke. *Transl Stroke Res*. 2018; 9:555–63.
<https://doi.org/10.1007/s12975-018-0666-3>
PMID:[30280366](https://pubmed.ncbi.nlm.nih.gov/30280366/)
 28. Lutkowska A, Roszak A, Lianeri M, Sowińska A, Sotiri E, Jagodziński PP. Analysis of rs8067378 Polymorphism in the Risk of Uterine Cervical Cancer from a Polish Population and its Impact on Gasdermin B Expression. *Mol Diagn Ther*. 2017; 21:199–207.
<https://doi.org/10.1007/s40291-017-0256-1>
PMID:[28120299](https://pubmed.ncbi.nlm.nih.gov/28120299/)
 29. Komiyama H, Aoki A, Tanaka S, Maekawa H, Kato Y, Wada R, Maekawa T, Tamura M, Shiroishi T. Alu-derived cis-element regulates tumorigenesis-dependent gastric expression of GASDERMIN B (GSDMB). *Genes Genet Syst*. 2010; 85:75–83.
<https://doi.org/10.1266/ggs.85.75> PMID:[20410667](https://pubmed.ncbi.nlm.nih.gov/20410667/)
 30. Wiemels JL, Walsh KM, de Smith AJ, Metayer C, Gonseth S, Hansen HM, Francis SS, Ojha J, Smirnov I, Barcellos L, Xiao X, Morimoto L, McKean-Cowdin R, et al. GWAS in childhood acute lymphoblastic leukemia reveals novel genetic associations at chromosomes 17q12 and 8q24.21. *Nat Commun*. 2018; 9:286.
<https://doi.org/10.1038/s41467-017-02596-9>
PMID:[29348612](https://pubmed.ncbi.nlm.nih.gov/29348612/)
 31. Rogers C, Fernandes-Alnemri T, Mayes L, Alnemri D, Cingolani G, Alnemri ES. Cleavage of DFNA5 by caspase-3 during apoptosis mediates progression to secondary necrotic/pyroptotic cell death. *Nat Commun*. 2017; 8:14128.
<https://doi.org/10.1038/ncomms14128>
PMID:[28045099](https://pubmed.ncbi.nlm.nih.gov/28045099/)
 32. Hallajzadeh J, Maleki Dana P, Mobini M, Asemi Z, Mansournia MA, Sharifi M, Yousefi B. Targeting of oncogenic signaling pathways by berberine for treatment of colorectal cancer. *Med Oncol*. 2020; 37:49.
<https://doi.org/10.1007/s12032-020-01367-9>
PMID:[32303850](https://pubmed.ncbi.nlm.nih.gov/32303850/)
 33. Binnewies M, Roberts EW, Kersten K, Chan V, Fearon DF, Merad M, Coussens LM, Gabrilovich DI, Ostrand-Rosenberg S, Hedrick CC, Vonderheide RH, Pittet MJ, Jain RK, et al. Understanding the tumor immune microenvironment (TIME) for effective therapy. *Nat Med*. 2018; 24:541–50.
<https://doi.org/10.1038/s41591-018-0014-x>
PMID:[29686425](https://pubmed.ncbi.nlm.nih.gov/29686425/)

34. Xie F, Zhou X, Fang M, Li H, Su P, Tu Y, Zhang L, Zhou F. Extracellular Vesicles in Cancer Immune Microenvironment and Cancer Immunotherapy. *Adv Sci (Weinh)*. 2019; 6:1901779. <https://doi.org/10.1002/adv.201901779> PMID:31871860
35. Varn FS, Wang Y, Mullins DW, Fiering S, Cheng C. Systematic Pan-Cancer Analysis Reveals Immune Cell Interactions in the Tumor Microenvironment. *Cancer Res*. 2017; 77:1271–82. <https://doi.org/10.1158/0008-5472.CAN-16-2490> PMID:28126714
36. Azimi F, Scolyer RA, Rumcheva P, Moncrieff M, Murali R, McCarthy SW, Saw RP, Thompson JF. Tumor-infiltrating lymphocyte grade is an independent predictor of sentinel lymph node status and survival in patients with cutaneous melanoma. *J Clin Oncol*. 2012; 30:2678–83. <https://doi.org/10.1200/JCO.2011.37.8539> PMID:22711850
37. Ohtani H. Focus on TILs: prognostic significance of tumor infiltrating lymphocytes in human colorectal cancer. *Cancer Immun*. 2007; 7:4. PMID:17311363
38. Ghatalia P, Gordetsky J, Kuo F, Dulaimi E, Cai KQ, Devarajan K, Bae S, Naik G, Chan TA, Uzzo R, Hakimi AA, Sonpavde G, Plimack E. Prognostic impact of immune gene expression signature and tumor infiltrating immune cells in localized clear cell renal cell carcinoma. *J Immunother Cancer*. 2019; 7:139. <https://doi.org/10.1186/s40425-019-0621-1> PMID:31138299
39. Ibrahim J, Op de Beeck K, Fransen E, Peeters M, Van Camp G. The Gasdermin E Gene Has Potential as a Pan-Cancer Biomarker, While Discriminating between Different Tumor Types. *Cancers (Basel)*. 2019; 11:1810. <https://doi.org/10.3390/cancers11111810> PMID:31752152
40. Ibrahim J, Op de Beeck K, Fransen E, Croes L, Beyens M, Suls A, Vanden Berghe W, Peeters M, Van Camp G. Methylation analysis of Gasdermin E shows great promise as a biomarker for colorectal cancer. *Cancer Med*. 2019; 8:2133–45. <https://doi.org/10.1002/cam4.2103> PMID:30993897
41. Kim MS, Chang X, Yamashita K, Nagpal JK, Baek JH, Wu G, Trink B, Ratovitski EA, Mori M, Sidransky D. Aberrant promoter methylation and tumor suppressive activity of the DFNA5 gene in colorectal carcinoma. *Oncogene*. 2008; 27:3624–34. <https://doi.org/10.1038/sj.onc.1211021> PMID:18223688
42. Croes L, Beyens M, Fransen E, Ibrahim J, Vanden Berghe W, Suls A, Peeters M, Pauwels P, Van Camp G, Op de Beeck K. Large-scale analysis of DFNA5 methylation reveals its potential as biomarker for breast cancer. *Clin Epigenetics*. 2018; 10:51. <https://doi.org/10.1186/s13148-018-0479-y> PMID:29682089
43. Wang Y, Yin B, Li D, Wang G, Han X, Sun X. GSDME mediates caspase-3-dependent pyroptosis in gastric cancer. *Biochem Biophys Res Commun*. 2018; 495:1418–25. <https://doi.org/10.1016/j.bbrc.2017.11.156> PMID:29183726
44. Kim MS, Lebron C, Nagpal JK, Chae YK, Chang X, Huang Y, Chuang T, Yamashita K, Trink B, Ratovitski EA, Califano JA, Sidransky D. Methylation of the DFNA5 increases risk of lymph node metastasis in human breast cancer. *Biochem Biophys Res Commun*. 2008; 370:38–43. <https://doi.org/10.1016/j.bbrc.2008.03.026> PMID:18346456
45. Tang Z, Li C, Kang B, Gao G, Li C, Zhang Z. GEPIA: a web server for cancer and normal gene expression profiling and interactive analyses. *Nucleic Acids Res*. 2017; 45:W98–102. <https://doi.org/10.1093/nar/gkx247> PMID:28407145
46. Bartha Á, Gyórfy B. TNMplot.com: A Web Tool for the Comparison of Gene Expression in Normal, Tumor and Metastatic Tissues. *Int J Mol Sci*. 2021; 22:2622. <https://doi.org/10.3390/ijms22052622> PMID:33807717
47. Chandrashekar DS, Bashel B, Balasubramanya SA, Creighton CJ, Ponce-Rodriguez I, Chakravarthi BV, Varambally S. UALCAN: A Portal for Facilitating Tumor Subgroup Gene Expression and Survival Analyses. *Neoplasia*. 2017; 19:649–58. <https://doi.org/10.1016/j.neo.2017.05.002> PMID:28732212
48. Asplund A, Edqvist PH, Schwenk JM, Pontén F. Antibodies for profiling the human proteome-The Human Protein Atlas as a resource for cancer research. *Proteomics*. 2012; 12:2067–77. <https://doi.org/10.1002/pmic.201100504> PMID:22623277
49. Wang B, Ran Z, Liu M, Ou Y. Prognostic Significance of Potential Immune Checkpoint Member HHLA2 in Human Tumors: A Comprehensive Analysis. *Front Immunol*. 2019; 10:1573. <https://doi.org/10.3389/fimmu.2019.01573> PMID:31379814
50. Shannon P, Markiel A, Ozier O, Baliga NS, Wang JT, Ramage D, Amin N, Schwikowski B, Ideker T.

Cytoscape: a software environment for integrated models of biomolecular interaction networks. *Genome Res.* 2003; 13:2498–504.

<https://doi.org/10.1101/gr.1239303> PMID:[14597658](https://pubmed.ncbi.nlm.nih.gov/14597658/)

51. Wang J, Vasaiakar S, Shi Z, Greer M, Zhang B. WebGestalt 2017: a more comprehensive, powerful, flexible and interactive gene set enrichment analysis toolkit. *Nucleic Acids Res.* 2017; 45:W130–7.

<https://doi.org/10.1093/nar/gkx356> PMID:[28472511](https://pubmed.ncbi.nlm.nih.gov/28472511/)

52. Li T, Fu J, Zeng Z, Cohen D, Li J, Chen Q, Li B, Liu XS. TIMER2.0 for analysis of tumor-infiltrating immune cells. *Nucleic Acids Res.* 2020; 48:W509–14.

<https://doi.org/10.1093/nar/gkaa407> PMID:[32442275](https://pubmed.ncbi.nlm.nih.gov/32442275/)

53. Xiong Y, Wei Y, Gu Y, Zhang S, Lyu J, Zhang B, Chen C, Zhu J, Wang Y, Liu H, Zhang Y. DiseaseMeth version 2.0: a major expansion and update of the human disease methylation database. *Nucleic Acids Res.* 2017; 45:D888–95.

<https://doi.org/10.1093/nar/gkw1123> PMID:[27899673](https://pubmed.ncbi.nlm.nih.gov/27899673/)

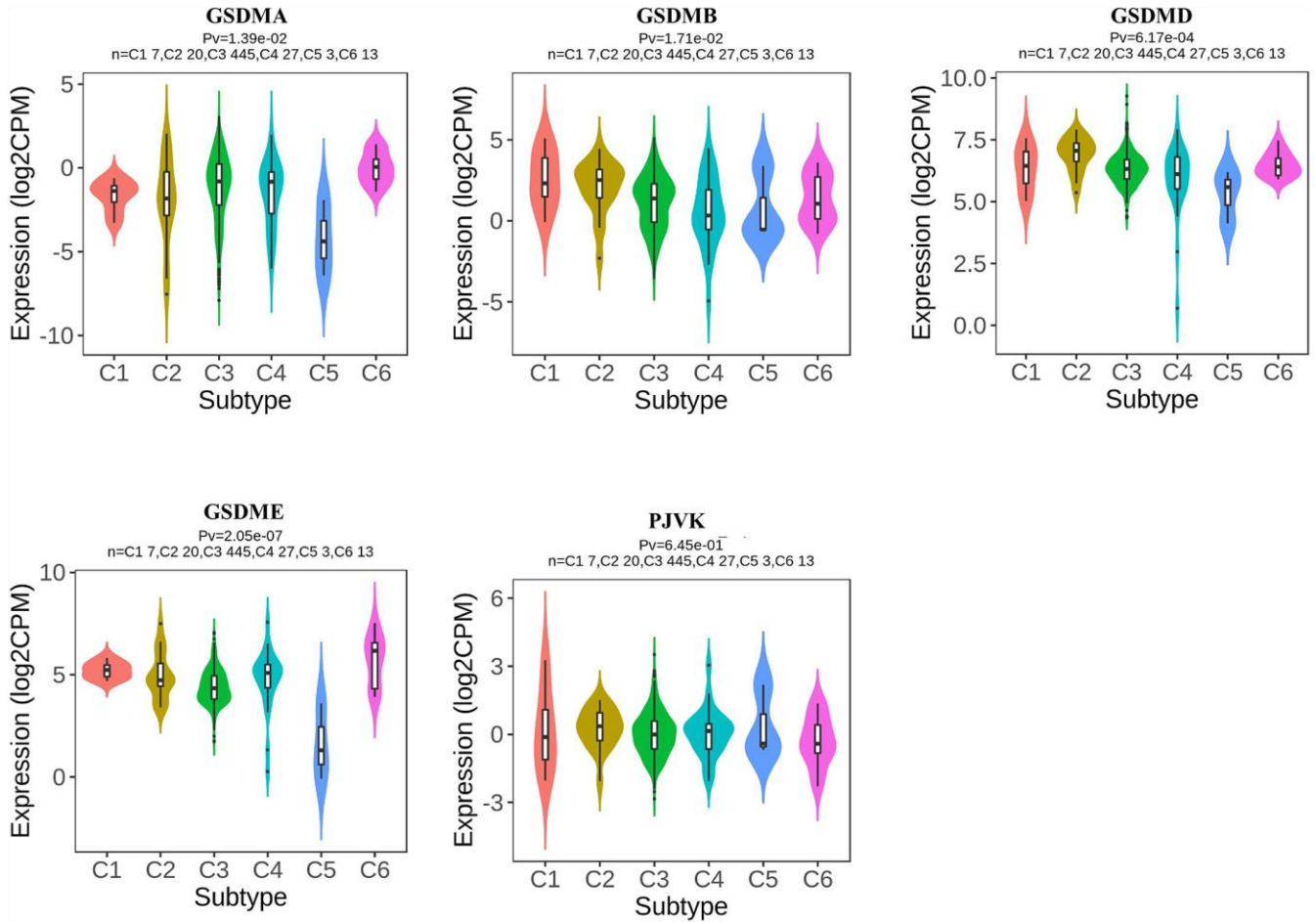
54. Ru B, Wong CN, Tong Y, Zhong JY, Zhong SS, Wu WC, Chu KC, Wong CY, Lau CY, Chen I, Chan NW, Zhang J. TISIDB: an integrated repository portal for tumor-immune system interactions. *Bioinformatics.* 2019; 35:4200–2.

<https://doi.org/10.1093/bioinformatics/btz210>

PMID:[30903160](https://pubmed.ncbi.nlm.nih.gov/30903160/)

SUPPLEMENTARY MATERIALS

Supplementary Figure



Supplementary Figure 1. The relationship between GSDM molecules' expression and ccRCC immune subtypes, including wound healing (C1), IFN-gamma dominant (C2), inflammatory (C3), lymphocyte depleted (C4), immunologically quiet (C5) and TGF- β dominant (C6) (TISIDB).

Supplementary Tables

Please browse Full Text version to see the data of Supplementary Table 2.

Supplementary Table 1. A series of bioinformatics databases for analyzing the role of the GSDM family in the biological processes of ccRCC.

Databases	Authors	Samples	Homepage links
GEPIA2	Tang Z. et al.	Tissues	http://gepia.cancer-pku.cn/
UALCAN	Chandrashekar DS	Tissues	http://ualcan.path.uab.edu/index.html
TNMPlot	Bartha Á, Györffy B	Tissues	https://www.tnmplot.com/
Kaplan-Meier plotter	Gyorffy B. et al.	Tissues	http://kmplot.com/analysis/
The Human Protein Atlas	Anna Asplund. et al.	Tissues	https://www.proteinatlas.org/
cBioPortal	Cerami E. et al.	Tissues	http://www.cbioportal.org/
Cytoscape	Doncheva NT et al.	-	-
WebGestalt	Liao Y. et al.	-	http://webgestalt.org/
TIMER2.0	Li T. et al.	Tissues	https://cistrome.shinyapps.io/timer/
TISIDB	Ru B. et al	Tissues	http://cis.hku.hk/TISIDB/
DiseaseMeth 2.0	Xiong Y. et al.	Tissues	http://bio-bigdata.hrbmu.edu.cn/diseasemeth/

Supplementary Table 2. The GSDM family member-associated co-expressed genes in ccRCC.