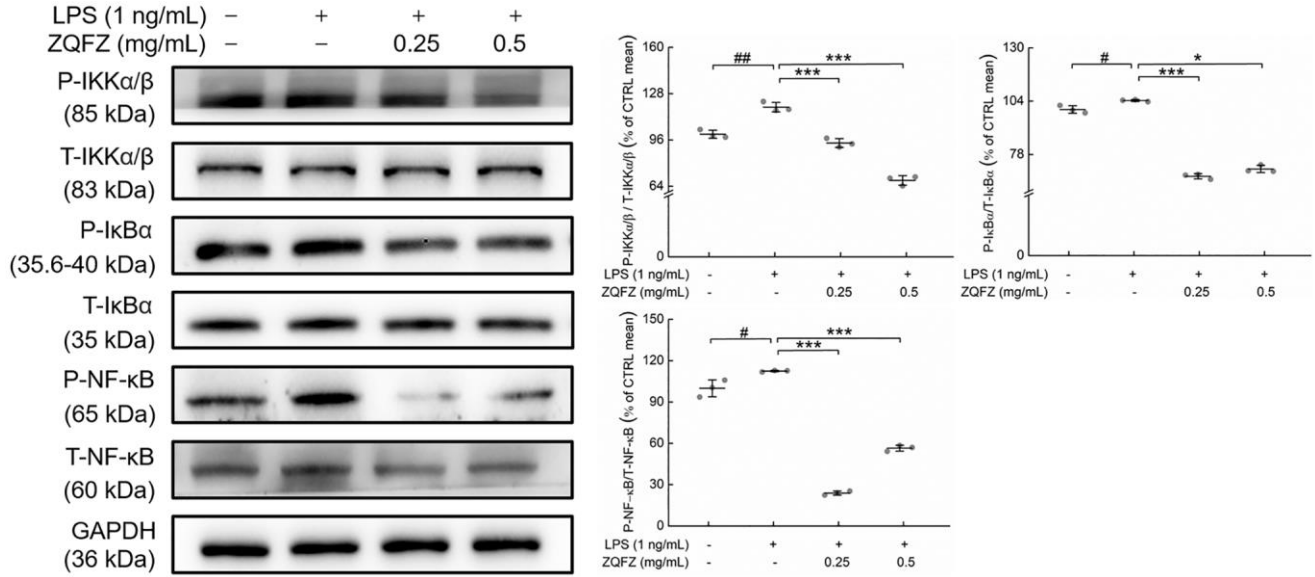
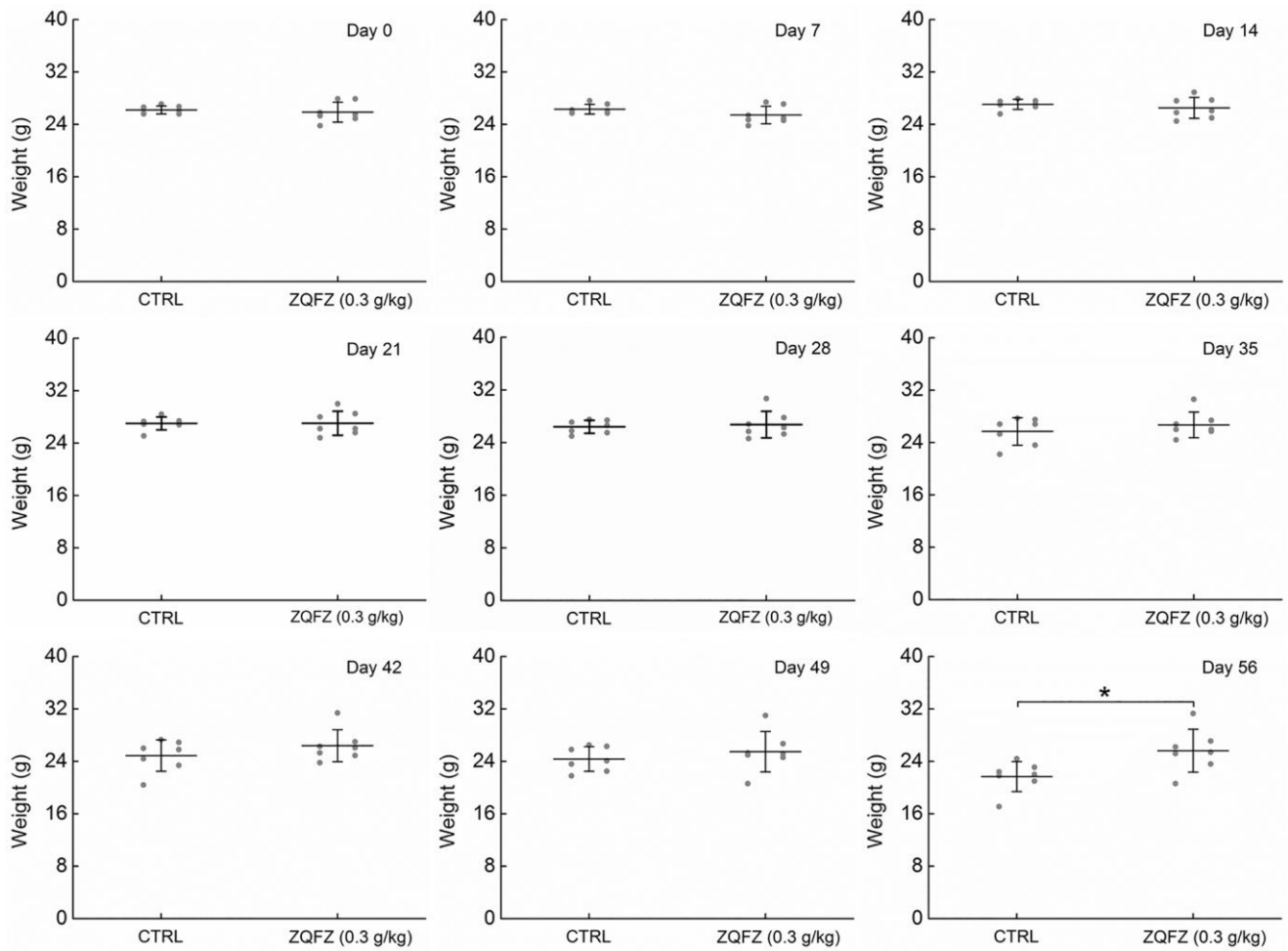


**SUPPLEMENTARY FIGURES**



**Supplementary Figure 1. The expression levels of P-IKK $\alpha/\beta$ , P-I $\kappa$ B $\alpha$  and P-NF- $\kappa$ B in RAW264.7 cells were detected by Western blotting.** The quantitative data of the protein expression levels were normalized by related total protein expressions. Data are shown as the mean  $\pm$  SD and analyzed via a one-way ANOVA test. ( $n = 3$ ). # $p < 0.05$  and ## $p < 0.01$  vs. control group, \* $p < 0.05$  and \*\*\* $p < 0.001$  vs. model group.



**Supplementary Figure 2. The effects of ZQFZ on bodyweight of *Apc<sup>Min/+</sup>* mice.** Data are shown as the mean ± SD and analyzed via a one-way ANOVA test. ( $n = 7$  mice/group). \* $p < 0.05$  vs. control group.