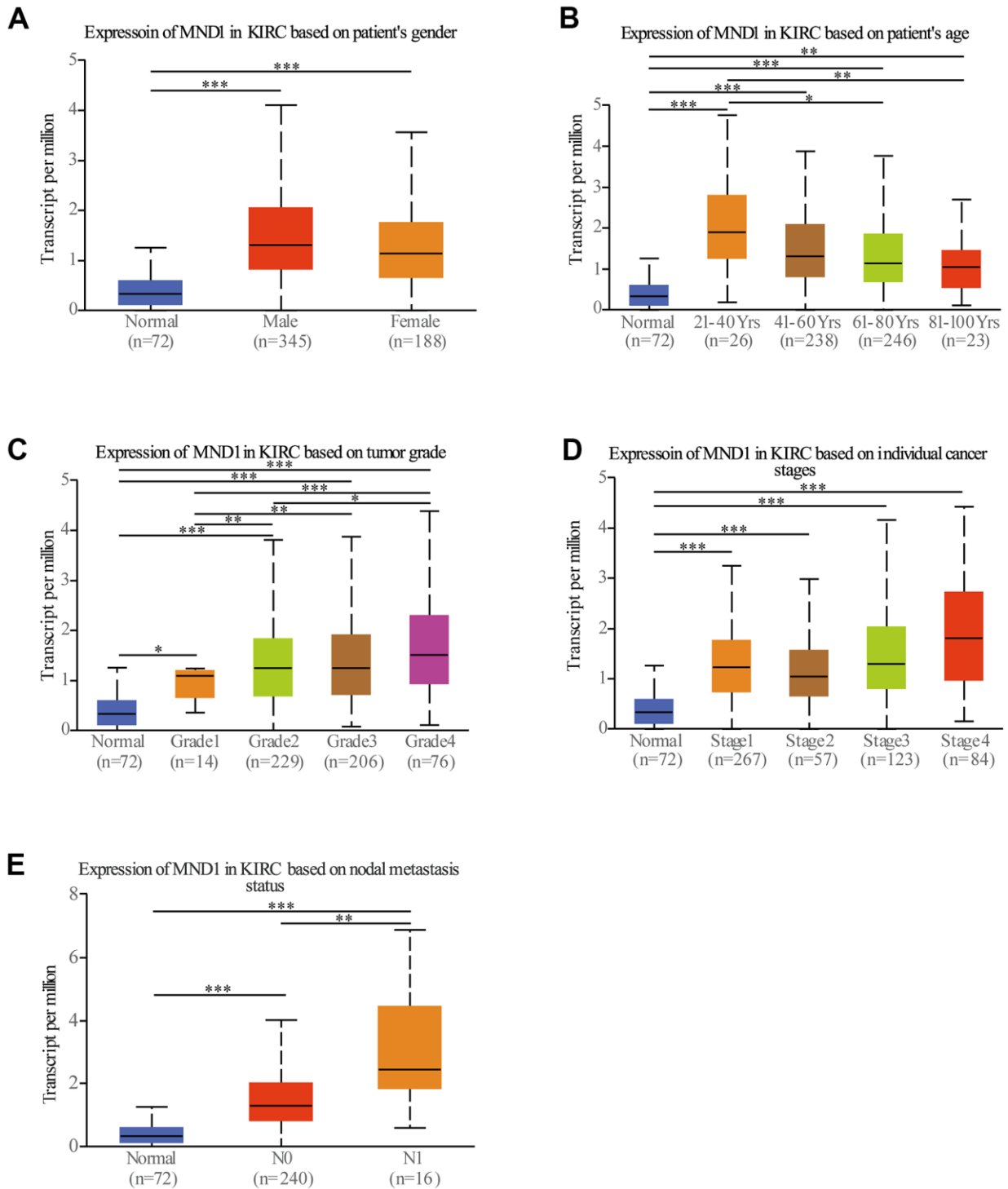
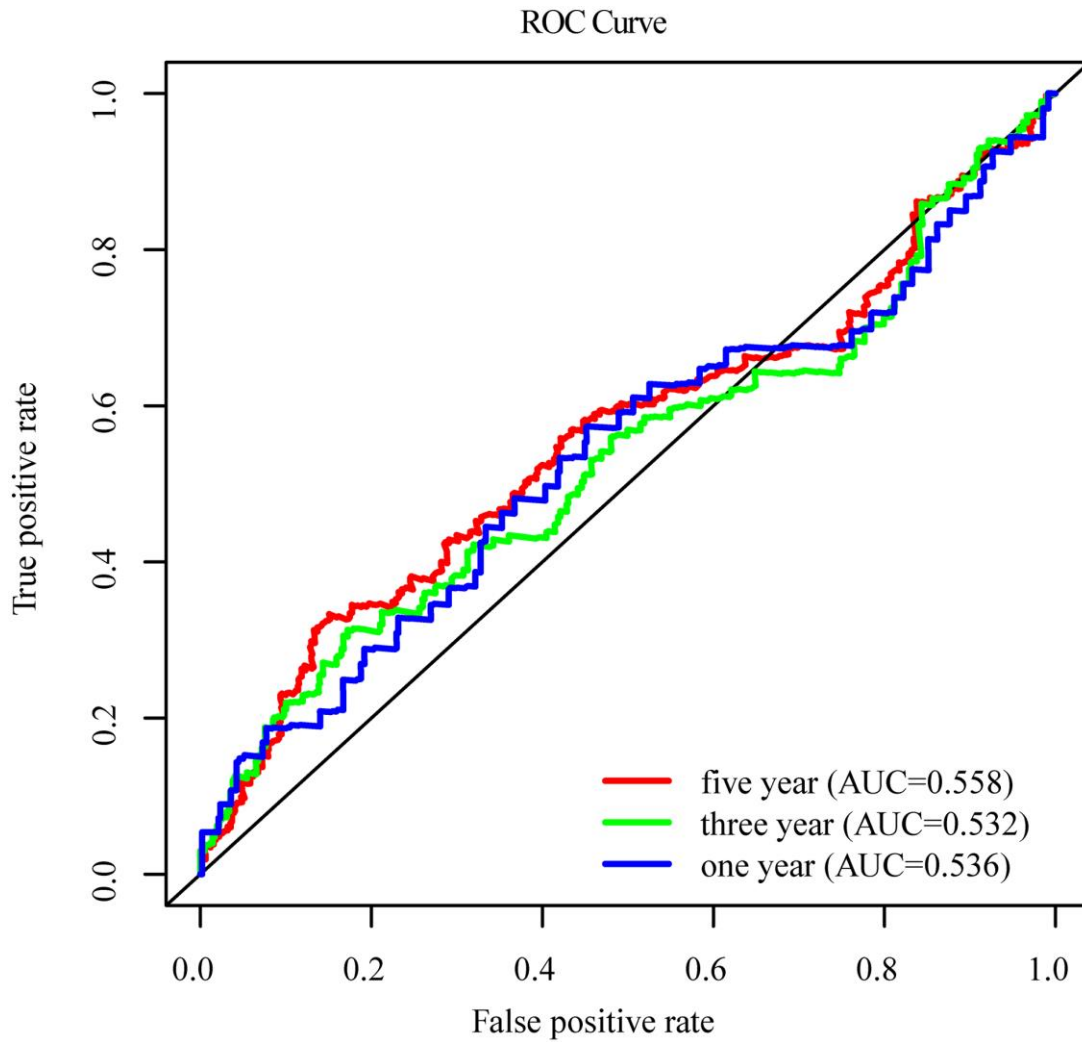


SUPPLEMENTARY FIGURES



Supplementary Figure 1. Association between MND1 expression and clinicopathological characteristics in patients with KIRC(UALCAN). (A), Boxplot showing expression of MND1 in KIRC based on patients' gender. (B), Boxplot showing expression of MND1 in KIRC based on patients' age. (C), Boxplot showing expression of MND1 in KIRC based on tumor grade. (D), Boxplot showing expression of MND1 in KIRC based on cancer stages. (E), Boxplot showing expression of MND1 in KIRC based on node (**P<0.01, **P<0.01, *P<0.05).



Supplementary Figure 2. ROC curve tests the accuracy of MND1 in predicting the survival rate of KIRC patients. ROC curves for the 1-, 3-, and 5-year survival according to the expression level of MND1. AUC, area under the curve; ROC, receiver operating characteristic.