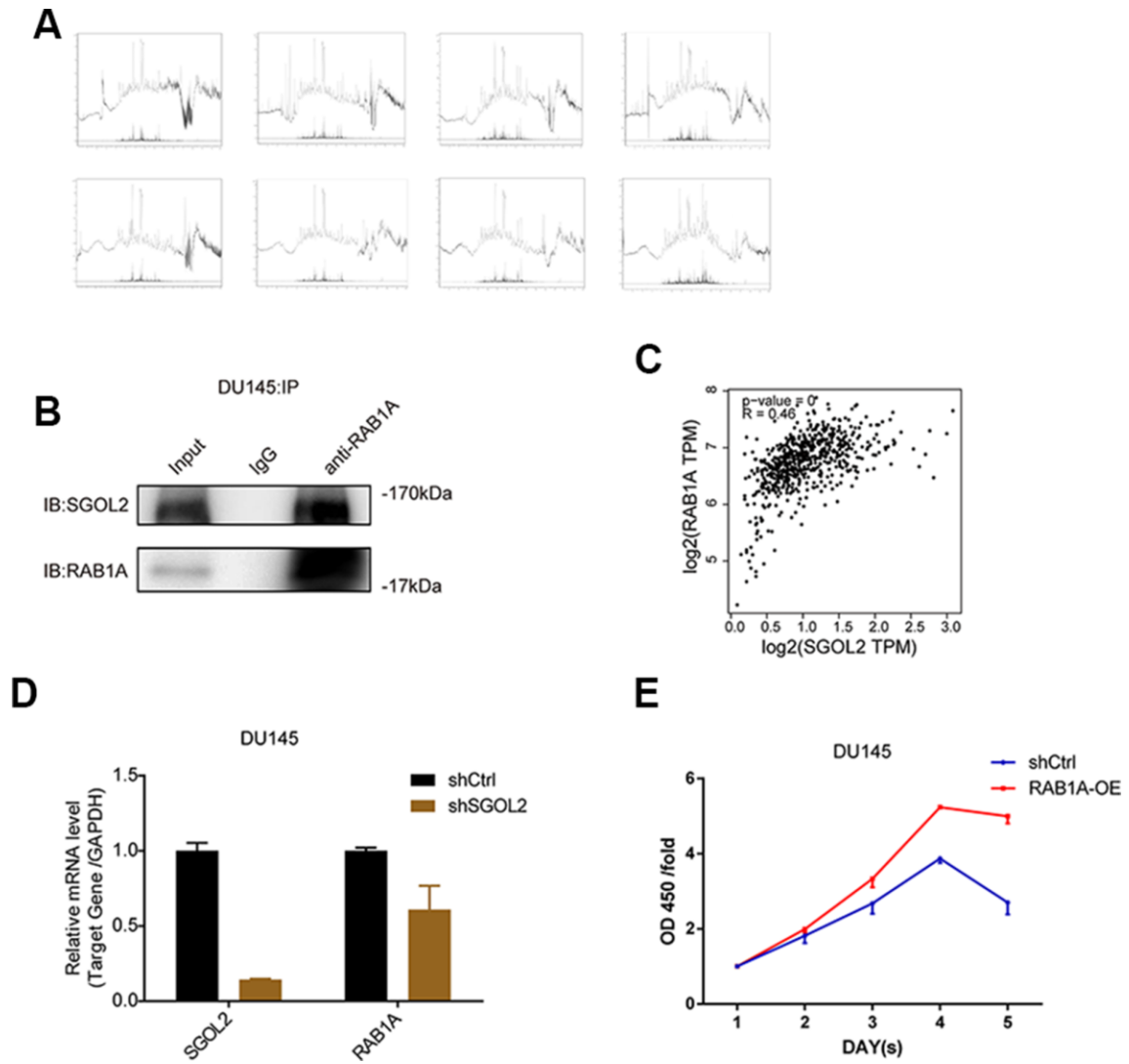


**SUPPLEMENTARY FIGURE**



**Supplementary Figure 1.** (A) 8 samples were cut from SDS-PAGE mentioned in Figure 4A. (B) WB analysis for Co-IP detected the interaction between RAB1A and SGOL2 in DU145. (C) GEPIA 2.0 presented the image of correlative analysis between SGOL2 and RAB1A. (D) The level of RAB1A mRNA was detected in shSGOL2 and the control group. (E) Growth curves of CCK8 assay were detected in RAB1A overexpressed group and the control group in DU145.