

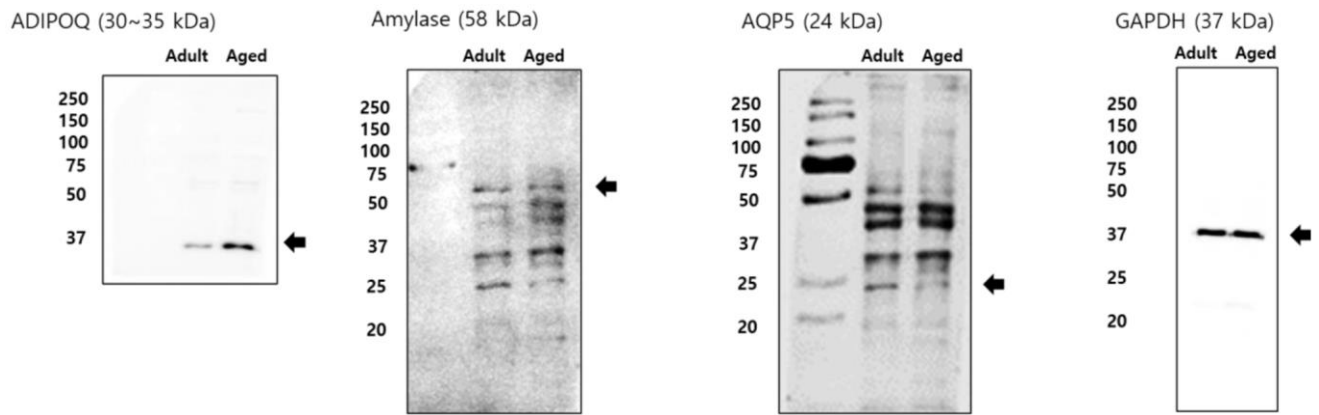
SUPPLEMENTARY FIGURES

Gene_Symbol	Gene_ID	mRNA Accession	Fold Change Aged/Adult (PG)
IGHM	3507	BC011857	6.968879
LOC101927120	101927120	NR_110136	2.908335
SLC7A5	8140	NM_003486	2.841554
KRTAP5-2	440021	NM_001004325	2.203520
SNORD37	26812	NR_002602	2.157255
KRT6B	3854	NM_005555	2.069454
SERPINA5	5104	NM_000624	2.015452
LOC105375217	105375217	XR_927147	1.925442
MYH1	4619	NM_005963	1.910244
VTRNA1-1	56664	NR_026703	1.909657
GOLGA6L7P	728310	NR_047567	1.845630
LTF	4057	NM_001199149	1.815881
MIR548AN	100616144	NR_039765	1.809482
GH2	2689	NM_002059	1.775243
ZNF708	7562	NM_001297560	1.749792
LOC105375044	105375044	XR_926767	1.689906
CACNA1D	776	NM_000720	1.635336
LCE3E	353145	NM_178435	1.627860
ZMAT3	64393	NM_022470	1.597397
MIR520E	574461	NR_030183	1.557508
MIR891A	100126341	NR_030581	1.548770
LOC100507494	100507494	AK090481	1.539391
SNORD115-45	100036566	NR_003498	1.537014
LRRC3C	100505591	NM_001195545	1.526499
MAPT-IT1	100130148	ENST00000626958	1.513355
LOC105376527	105376527	XR_930988	1.506562
LINC01524	101927700	NR_110038	-1.501124
LRP2	4036	NM_004525	-1.503005
IQCF2	389123	NM_203424	-1.508920
FRMD8P1	83957	NR_033742	-1.510207
AVPR2	554	NM_000054	-1.522772
LINC01015	100507362	NR_037179	-1.523004
STX19	415117	NM_001001850	-1.535952
OR4S2	219431	NM_001004059	-1.546214
LOC102724104	102724104	XR_937125	-1.594341
USP17L22	100287513	NM_001256863	-1.623754
MIR4645	100616285	NR_039788	-1.632908
MIR4730	100616359	NR_039883	-1.633304
NEBL-AS1	100128511	NR_046283	-1.651908
LOC105376165	105376165	XR_930152	-1.658585
LOC105379082	105379082	XR_948567	-1.678102
TCP10L2	401285	XM_011535822	-1.687725
MCOLN3	55283	NM_001253693	-1.710170
CFTR	1080	NM_000492	-1.748196
CCDC122	160857	NM_144974	-1.756902
LOC105374086	105374086	XM_011536382	-1.760010
TAC1	6863	NM_003182	-1.878416
OR4C16	219428	NM_001004701	-1.911966
TMEM52B	120939	NM_001079815	-1.945723
SERHL	94009	NR_027786	-2.003061
PPBP	5473	NM_002704	-2.012441
MIR516A1	574498	NR_030220	-2.021020
GK	2710	NM_000167	-2.083833
LINC01139	339535	NR_015407	-2.090860
SCD	6319	NM_005063	-2.145316
RNU12	267010	NR_029422	-2.211497
CES1P1	51716	ENST00000421606	-2.259019

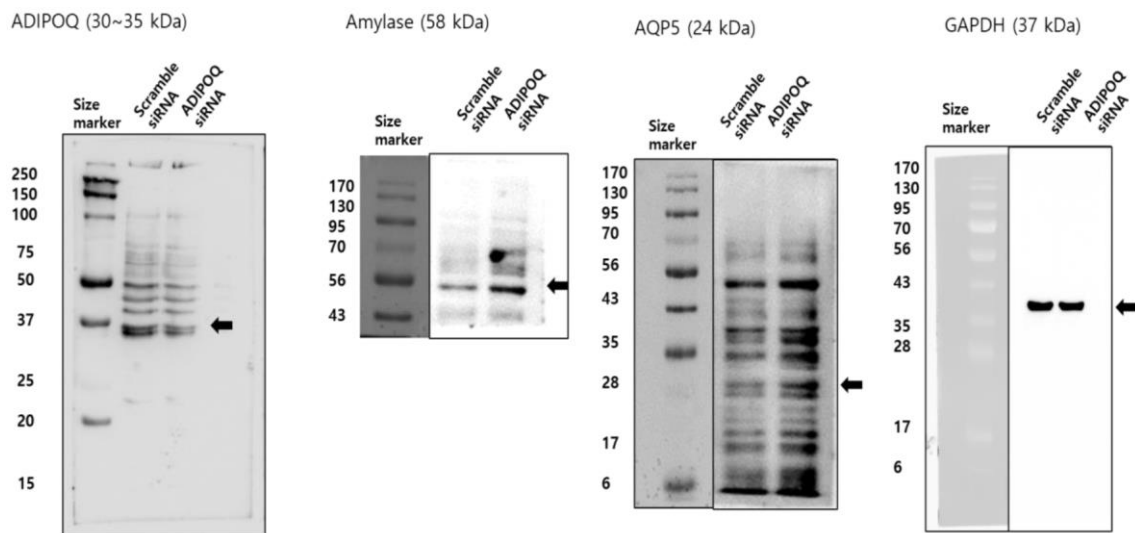
Supplementary Figure 1. List of DEGs between adult and aged parotid glands. List of differentially expressed genes (DEGs) between adult and aged parotid gland (based on at least a 1.5-fold change and p value < 0.05).

Gene_Symbol	Gene_ID	mRNA Accession	Fold Change Aged/Adult (SMG)
C5N3	1448	NM_005212	3.877379
ODAM	54959	NM_017855	3.621289
ZCWPW2	152098	AB087877	3.485096
ADIPOQ	9370	NM_001177800	3.281488
PLIN1	5346	NM_001145311	2.753045
TRDJ4	28519	OTTHUMT00000410933	2.563580
PEG10	23089	NM_001040152	2.513301
DMBT1	1755	NM_004406	2.477414
LCN2	3934	NM_005564	2.469396
RPL23AP7	118433	NR_000029	2.445967
CXCL17	284340	NM_198477	2.402523
MIR378E	100616498	NR_039609	2.359912
H3F3B	3021	NM_005324	2.209932
GLP1R	2740	NM_002062	2.207696
C10orf107	219621	NM_173554	2.138469
MIR4739	100616170	NR_039893	2.130492
NP1P811	728888	XM_011546005	2.109301
LOC644135	644135	XR_943016	2.056472
LRRC32	2615	NM_001128922	2.033439
SLC13A2	9058	NM_001145975	2.021024
LAMA2	3908	NM_000426	2.014116
ITM2A	9452	NM_001171581	1.989942
MMIP7	4316	NM_002423	1.968020
HSPB6	126393	NM_144617	1.908638
HIST2H2BE	8349	NM_003528	1.908203
LOC729162	729162	XR_950549	1.884894
GFR3	2676	NM_001496	1.848942
FAM66A	100133172	NR_026789	1.847736
EBF1	1879	NM_001290360	1.788372
MIR29C	407026	NR_029832	1.784049
MEIS3P1	4213	NR_002211	1.783632
NAGPA-A51	100507589	NR_038913	1.783336
MIR4473	100616229	NR_039684	1.771455
PNRC2	55629	NM_017761	1.763217
TLR7	51284	NM_016562	1.746700
FMOD	2331	NM_002023	1.744332
SPANXN5	494197	NM_001009616	1.742244
GPNMB	10457	NM_001005340	1.688689
NXFS	55998	NM_032946	1.679810
ANPEP	290	NM_001150	1.679531
LOC105376093	105376093	XR_929954	1.652129
IRX6	79190	NM_024335	1.649560
ANKRD10	559508	NR_104586	1.646286
HNRNPC	3183	NM_001077442	1.638772
ZNF284	342909	NM_001037813	1.633540
LOC105373730	105373730	XR_923551	1.622980
MIR4494	100616478	NR_039715	1.616950
MGAM2	93432	NM_001293626	1.608772
LINC01506	101927015	NR_109769	1.591292
MSC-A51	100132891	NR_033651	1.586123
LY86	9450	NM_004271	1.581566
CG88	94115	NM_033183	1.574725
5ELPLG	6404	NM_001206609	1.571848
MUC20	200958	NM_001282506	1.566180
LOC102723505	102723505	NR_110876	1.560612
HLA-DQB2	3120	NM_001198858	1.549792
IGHV1-69	28461	OTTHUMT00000324207	1.548153
IL17RD	54756	NM_017563	1.545380
ITGA10	8515	NM_001303040	1.542583
MIR765	768220	NR_030527	1.537287
ATP1B4	23439	NM_001142447	1.530152
SNORD115-32	10003806	NR_003347	1.525332
MCF2	4168	NM_001098855	1.522990
PLK2	10769	NM_001252226	1.522093
LY5MD4	145748	NM_001284417	1.521513
EYA1	2138	NM_000503	1.519507
C5orf46	389336	NM_206966	1.518773
MCF2L-A51	100289410	NR_034002	1.513757
PLP1	8511	NM_003711	1.513729
MIR223A	442897	NR_029890	1.506012
BARX2	8538	NM_003658	1.505732
FUS	2521	NM_001170634	1.500209
C5orf60	285679	AK093042	-1.503174
LOC105374261	105374261	XR_924809	-1.510150
MIR4318	100422857	NR_036202	-1.511169
LOC105370642	105370642	XR_915933	-1.525863
SCX	642659	NM_001080514	-1.542630
LINC00398	100874158	NR_047012	-1.562614
RPL23P8	222901	NR_026673	-1.569134
MIR3691	100500900	NR_037462	-1.604544
OR10AD1	121275	NM_001004134	-1.606547
MTRNR2L5	100463289	NM_001190478	-1.667533
LOC101929715	101929715	BC111372	-1.688932
LOC101929305	101929305	XR_241170	-1.690197
SLC9B1P3	100421008	OTTHUMT00000047660	-1.692214
SPANXC	84663	uc004Rk.3	-1.694244
SHISA2	387914	NM_001007538	-1.723789
FAM171B	165215	NM_177454	-1.736445
KRT35	3886	NM_002280	-1.900736
LOC105369381	105369381	XR_913289	-2.006661
LOC728093	728093	XR_948446	-2.011749
LOC101927120	101927120	NR_110136	-2.023709
MUC5B	727897	NM_002458	-2.038081
LINC01372	101929736	NR_108104	-2.073445
MIR3689E	100616460	NR_039695	-2.123141
NT1L	4500	NR_001447	-2.145291
MIR516A1	574498	NR_030220	-2.179300
SCGB1C2	653486	NM_001097610	-4.843478
C6orf58	352999	NM_001010905	-5.904671

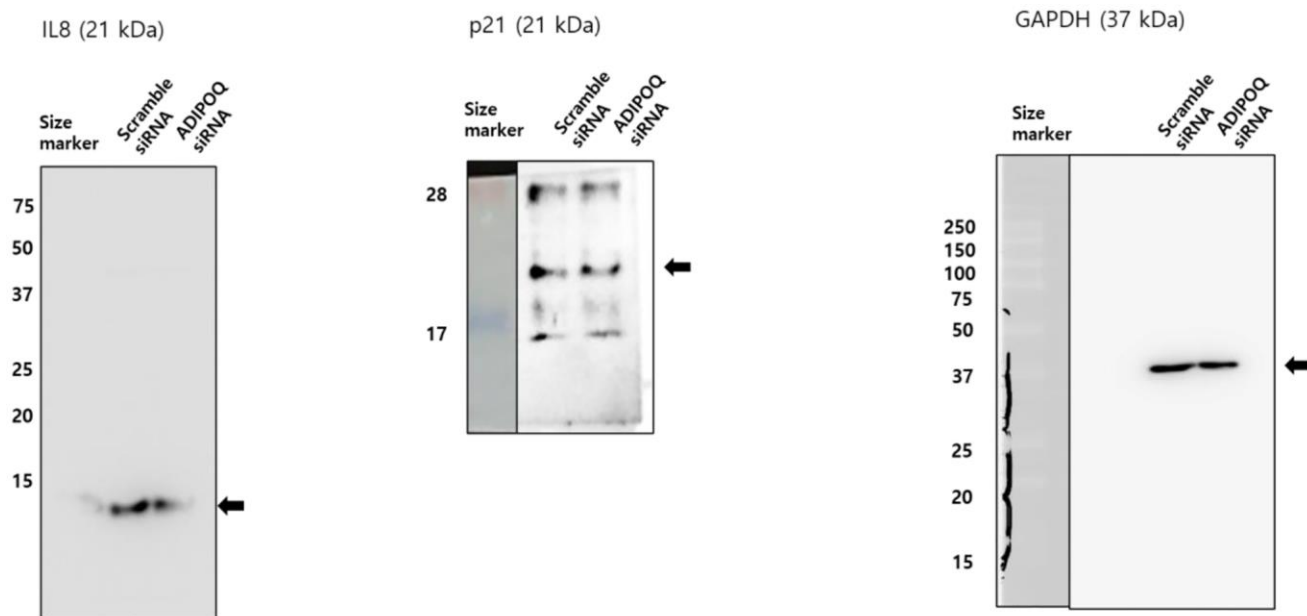
Supplementary Figure 2. List of DEGs between adult and aged submandibular glands. List of differentially expressed genes (DEGs) between adult and aged submandibular gland (based on at least a 1.5-fold change and p value < 0.05).



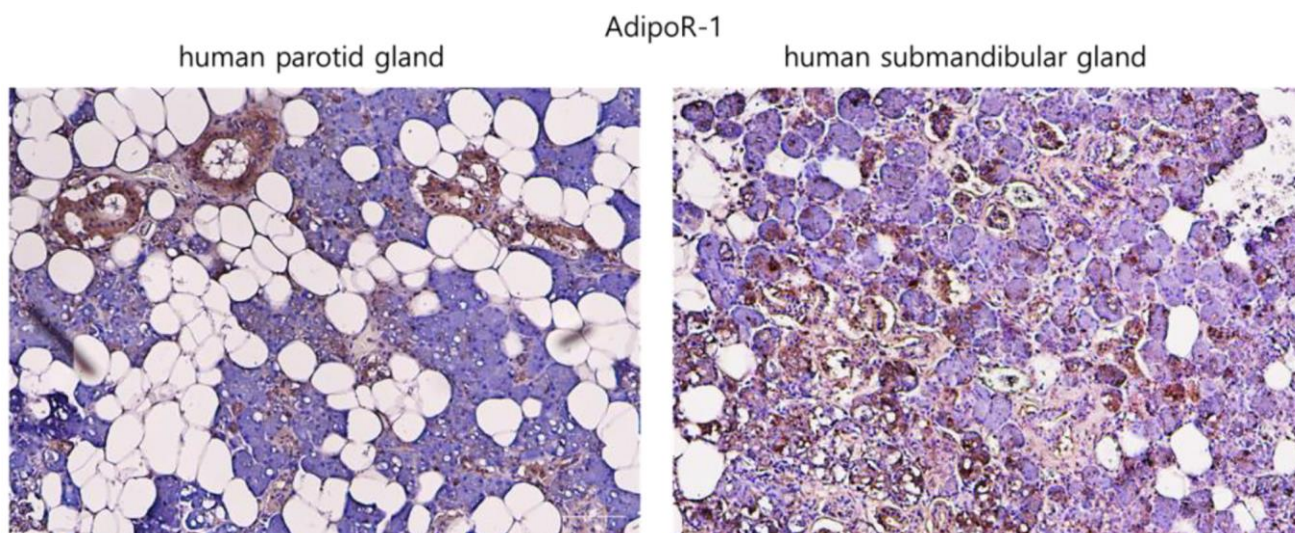
Supplementary Figure 3. Uncropped western blots of Figure 5F.



Supplementary Figure 4. Uncropped western blots of Figure 6F.



Supplementary Figure 5. Uncropped western blots of Figure 7C.



Supplementary Figure 6. The expression of AdipoR1 in human salivary gland tissues.