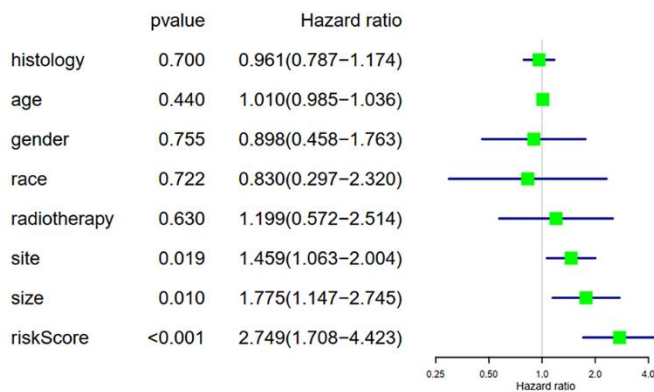
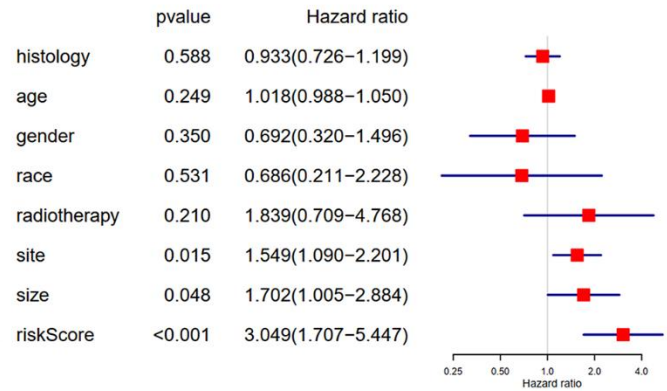


## SUPPLEMENTARY FIGURES

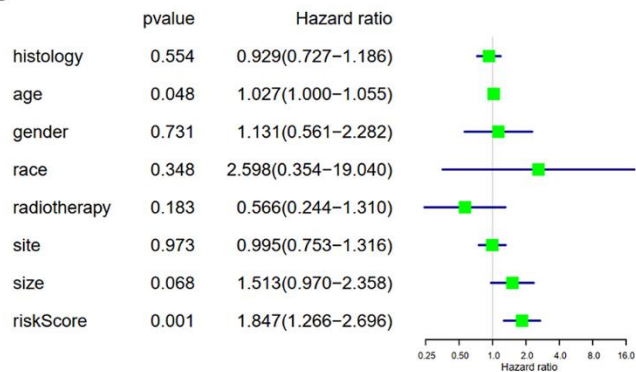
### A Univariate COX regression analysis of OS in TCGA training cohort



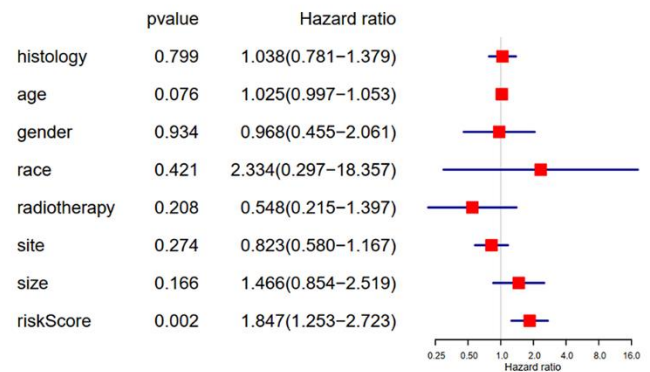
### Multivariate COX regression analysis of OS in TCGA training cohort



### B Univariate COX regression analysis of OS in TCGA testing cohort

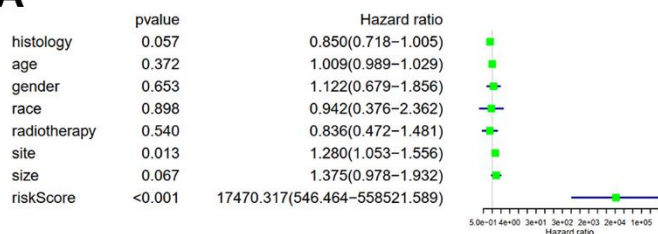


### Multivariate COX regression analysis of OS in TCGA testing cohort

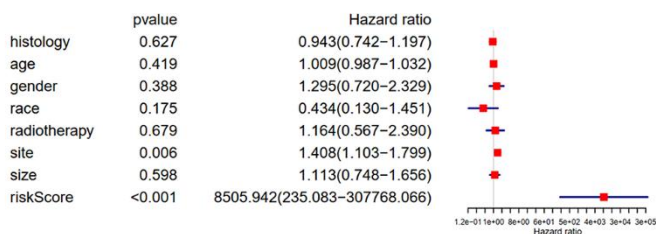


**Supplementary Figure 1.** Univariate and multivariate Cox regression analysis of OS in TCGA training (A) and testing cohorts (B).

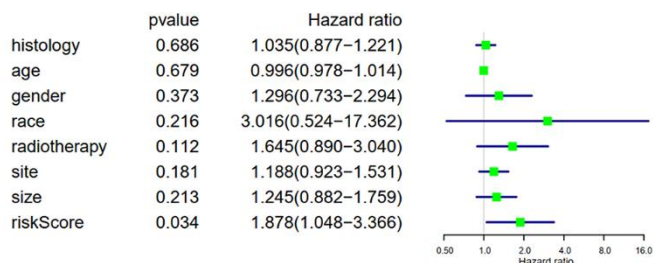
### A Univariate COX regression analysis of PFS in TCGA training cohort



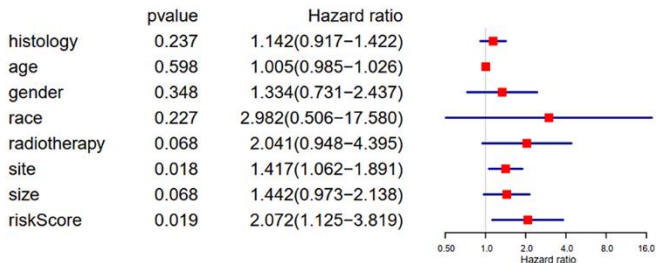
### Multivariate COX regression analysis of PFS in TCGA training cohort



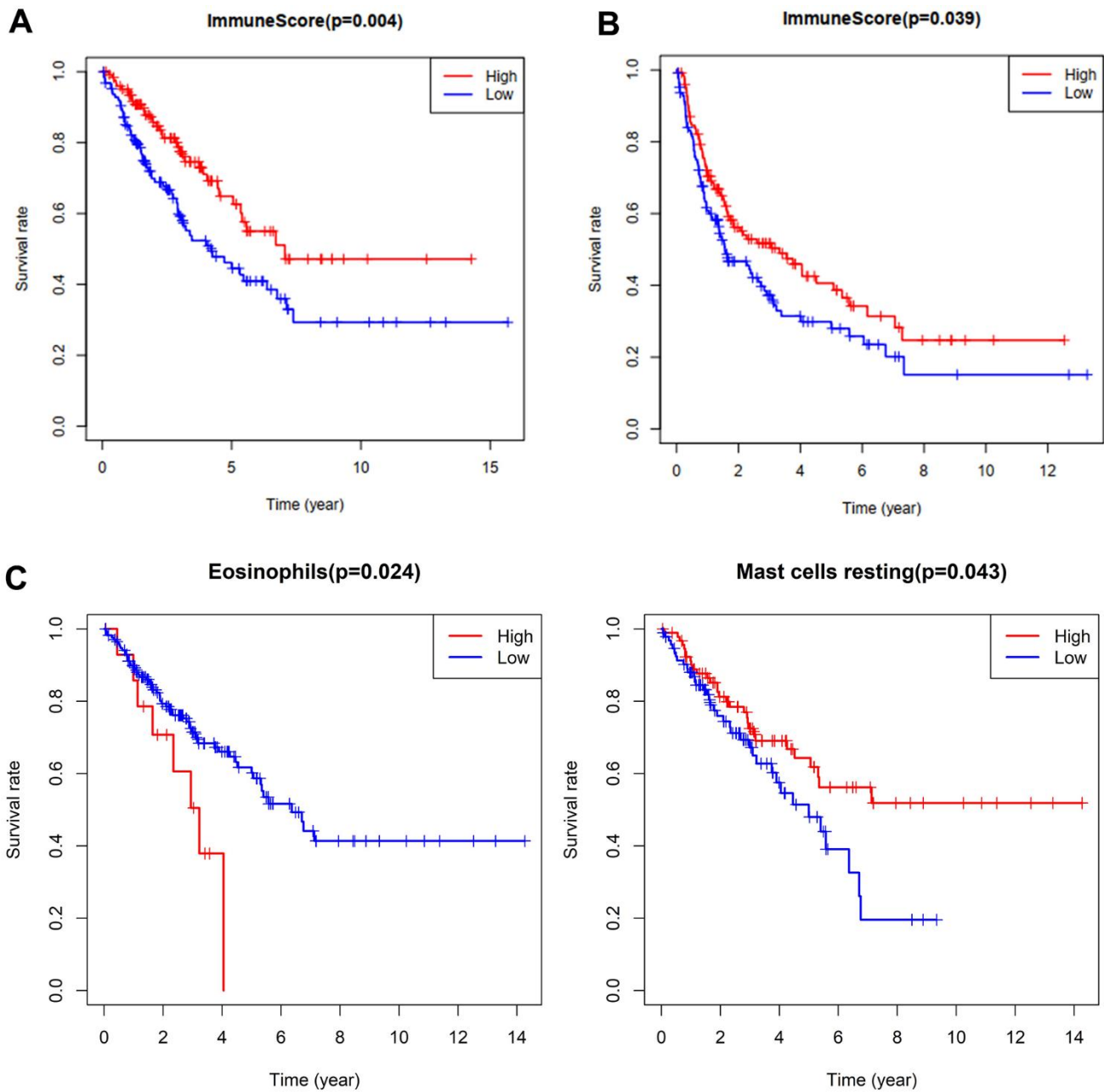
### B Univariate COX regression analysis of PFS in TCGA testing cohort



### Multivariate COX regression analysis of PFS in TCGA testing cohort



**Supplementary Figure 2.** Univariate and multivariate Cox regression analysis of PFS in TCGA training (A) and testing cohorts (B).



**Supplementary Figure 3. Survival curve of immune score and tumor-infiltrating immune cells.** OS (A) and PFS (B) curve of patients with high- or low- immune scores in the TCGA cohort. (C) OS curve of eosinophils and mast cells resting in the TCGA cohort.