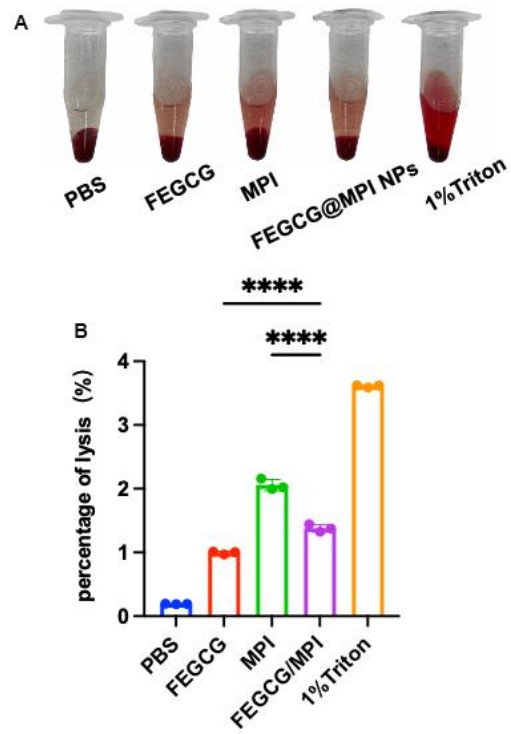
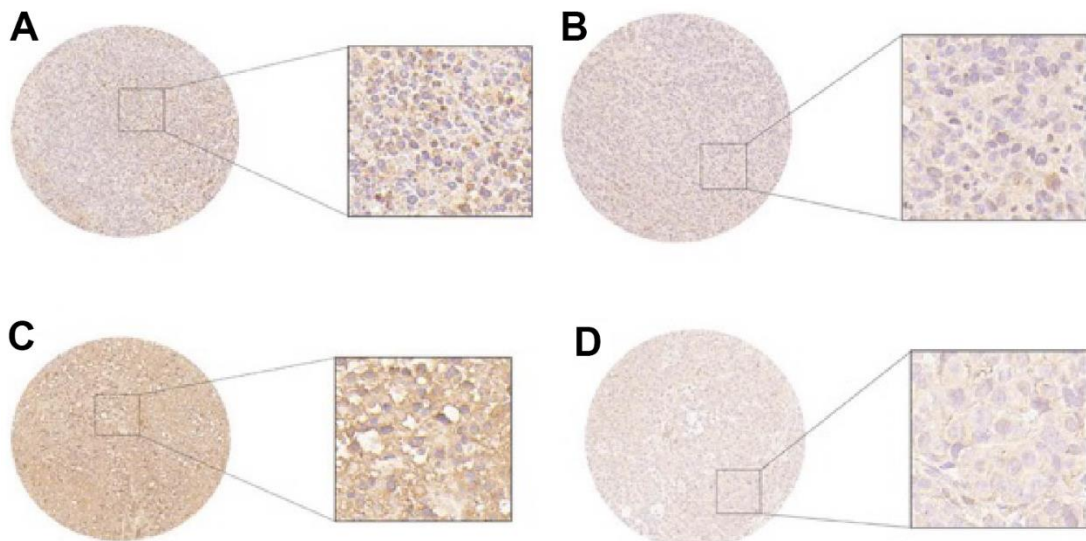


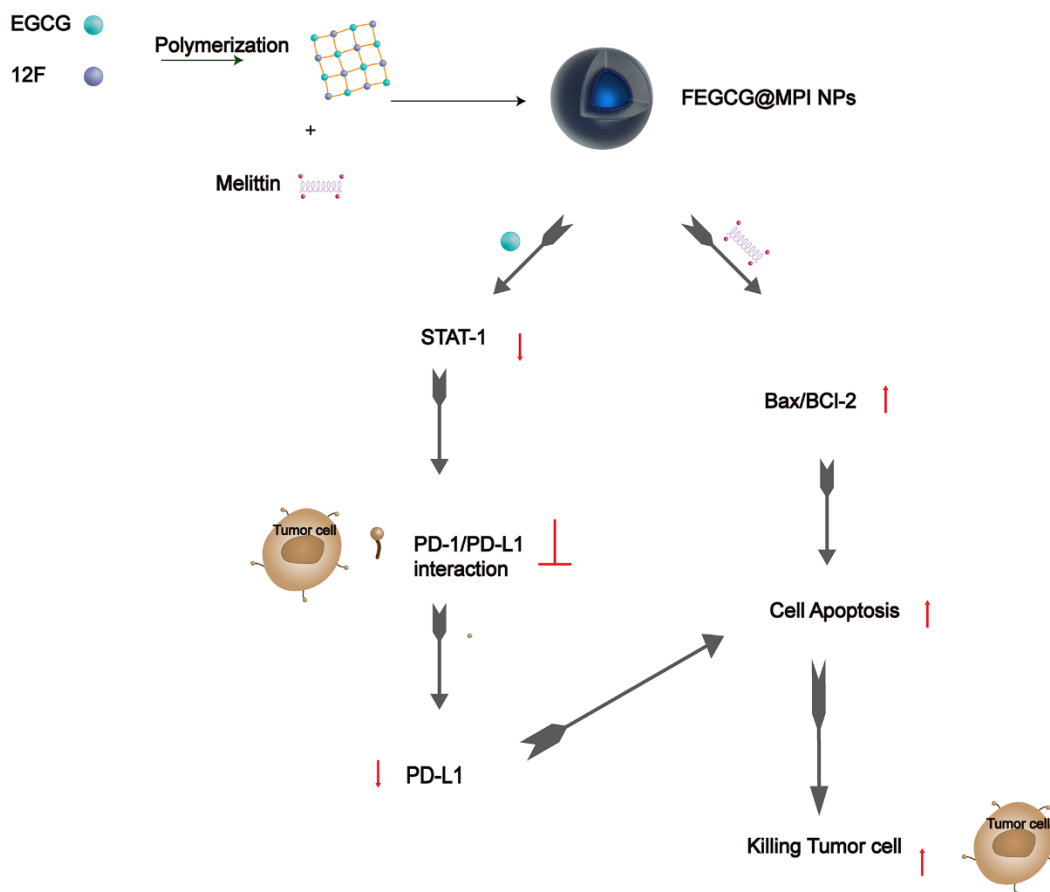
## SUPPLEMENTARY FIGURES



**Supplementary Figure 1.** (A) Hemolysis effect and quantitative lysis percentage ( $n = 3$ ). (B) Data are presented as the mean  $\pm$  standard deviation. \* $P < 0.05$  vs EGCG/MPI group, \*\* $P < 0.01$  vs EGCG/MPI group.



**Supplementary Figure 2. Immunohistochemical staining (x 200) showed the expression of PD-L1 in tumor tissue. (A–D) tumor tissues treated with PBS, FEGCG, MPI, FEGCG@MPI NPs. The expression of PD-L1 was significantly decreased in FEGCG@MPI NPs group.**



**Supplementary Figure 3. Schematic diagram of FEGCG in collaboration with MPI in antitumor.**